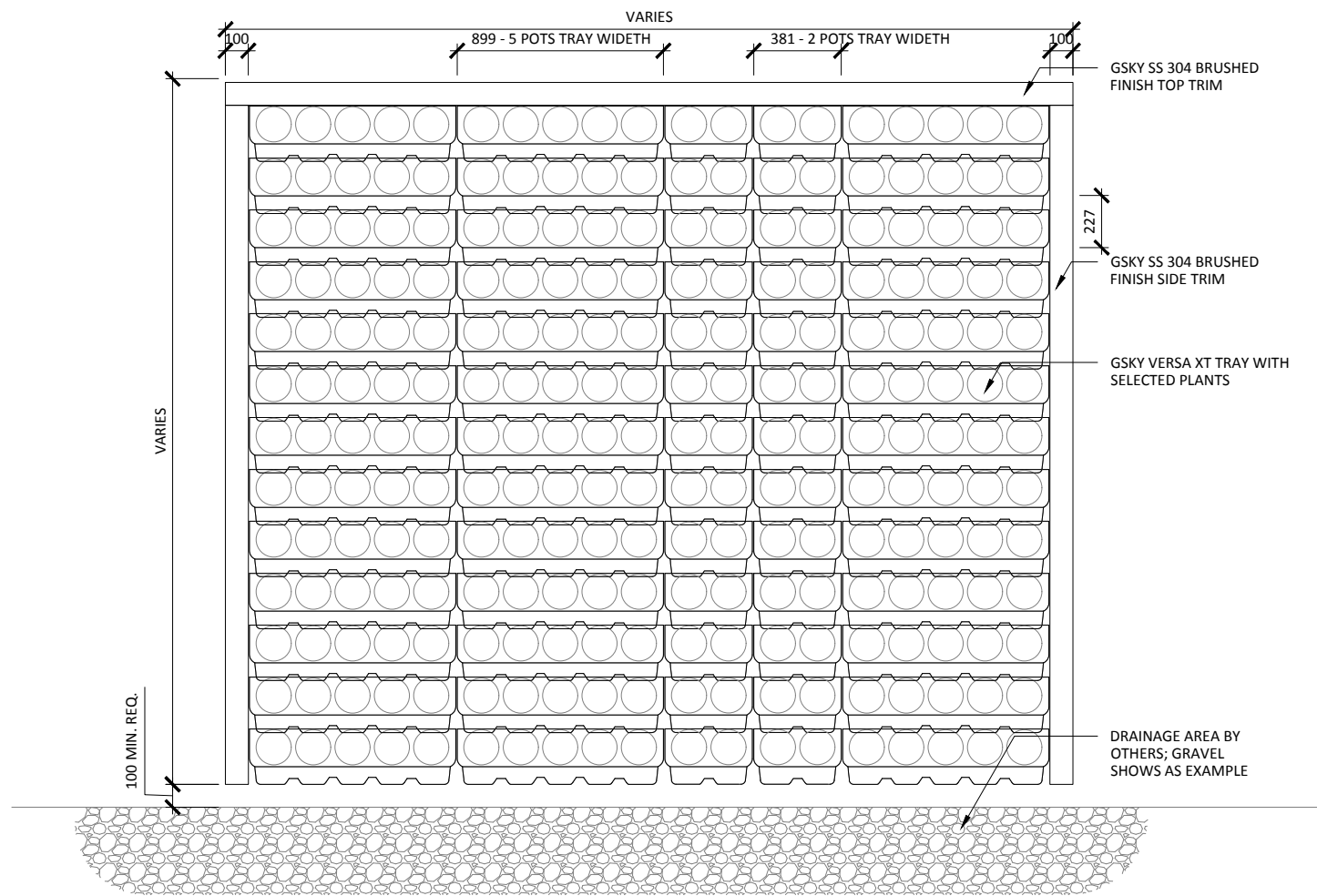


- GSKY SS 304 TOP TRIM
- WATERPROOFING BY OTHERS
- VERSA DRIPLINE
- GSKY VERSA XT (T304 SS) FRAME
- GSKY 3/4" SUPPLY LINE
- GSKY VERSA XT TRAYS
- GSKY NUTRITIENT INJECTOR
- DRAINAGE AREA
- GSKY SS 304 SIDE TRIM

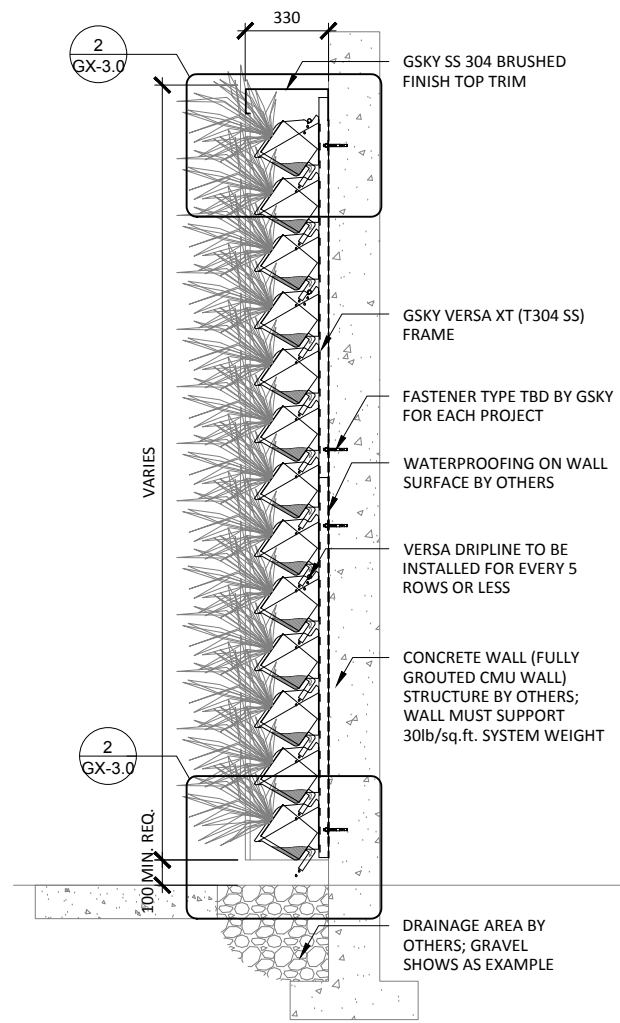


VERSA WALL® XT™

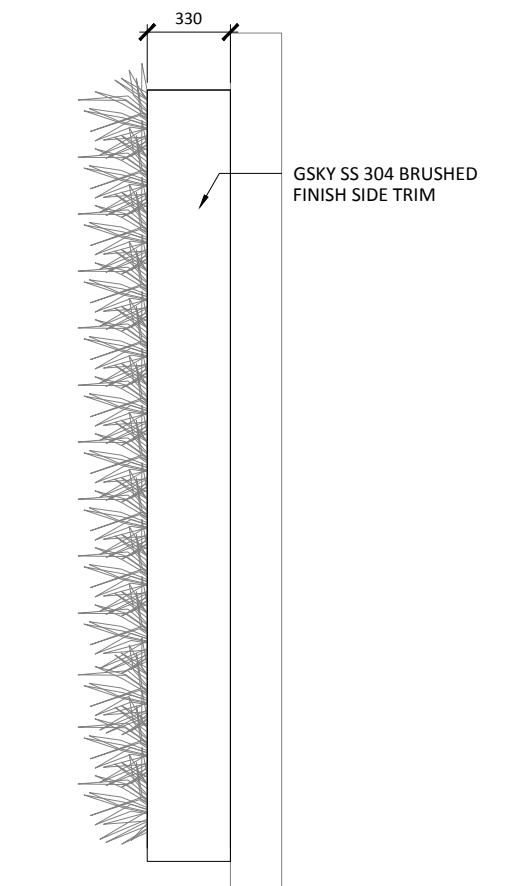
TO THE GROUND / FRAME OPTION
XTF-N4



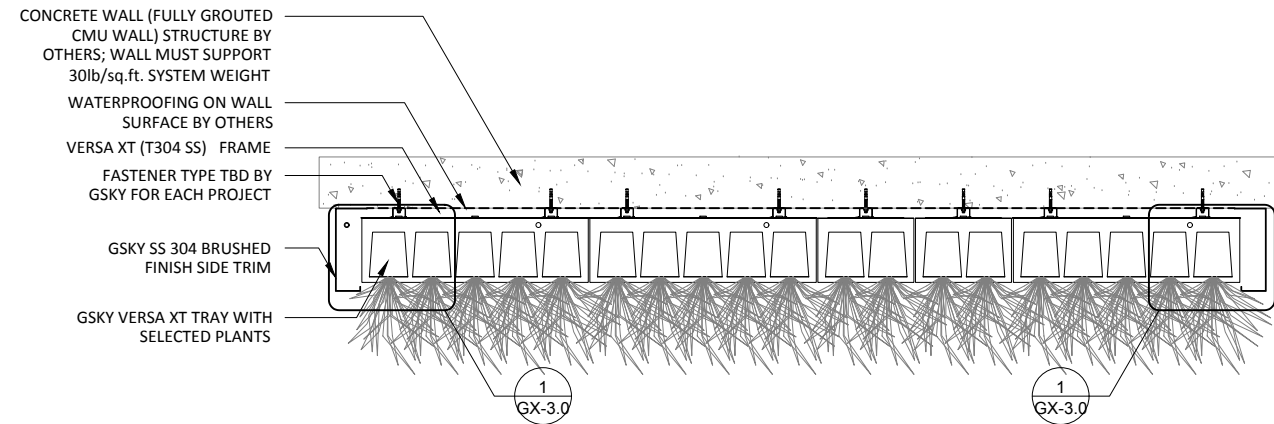
1 ELEVATION
SCALE: 1:30



3 SECTION
SCALE: 1:30



4 SIDE
SCALE: 1:30



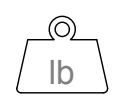
2 PLAN
SCALE: 1:30



VERSA WALL[®] XT[™]

XTF-N4 GENERAL OVERVIEW

VER. 1.1 297x420 mm (A3)



SYSTEM WEIGHT

Versa XT wall system weight = 30 lb/sq.ft / 146 kg/sq.m.

100 SIDE/TOP

VARIOUS BOTTOM

TRIM

SS brushed finish or powder coated aluminum
See gsky.com for details.



REMOTE ICU

| SERVICE | | | |
|-----------|---------------|---------------|---------------|
| AUTOMATED | At ICU + WALL | At ICU + WALL | At ICU + WALL |

IRRIGATION

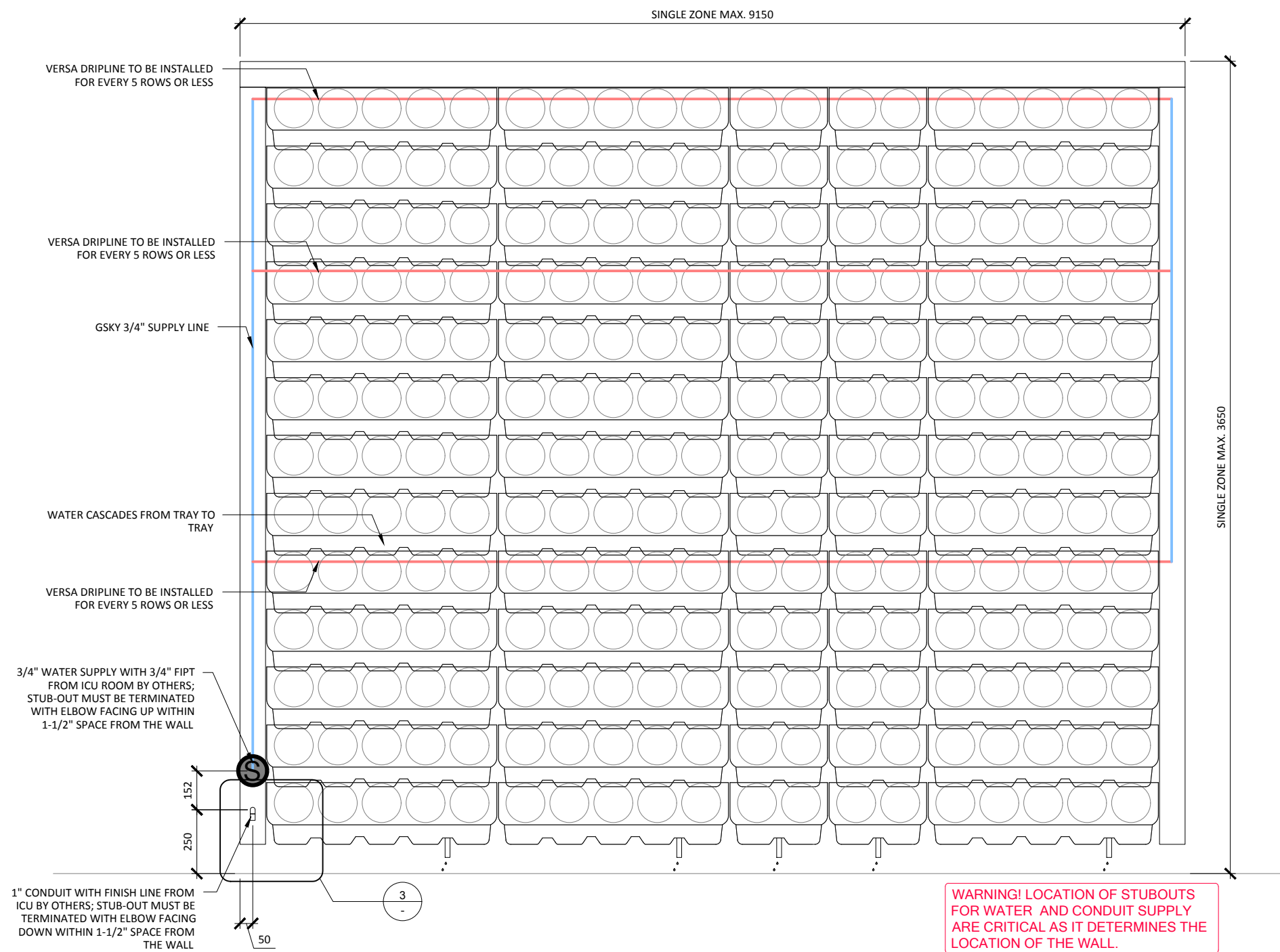
Require GSKy's consultation for > 35' / 10.5 m height wall or > 100' / 30.5 m wide wall.

| < 8' | OK | | | |
|-------|----|----|----|----|
| < 13' | OK | OK | | |
| > 13' | | OK | OK | OK |

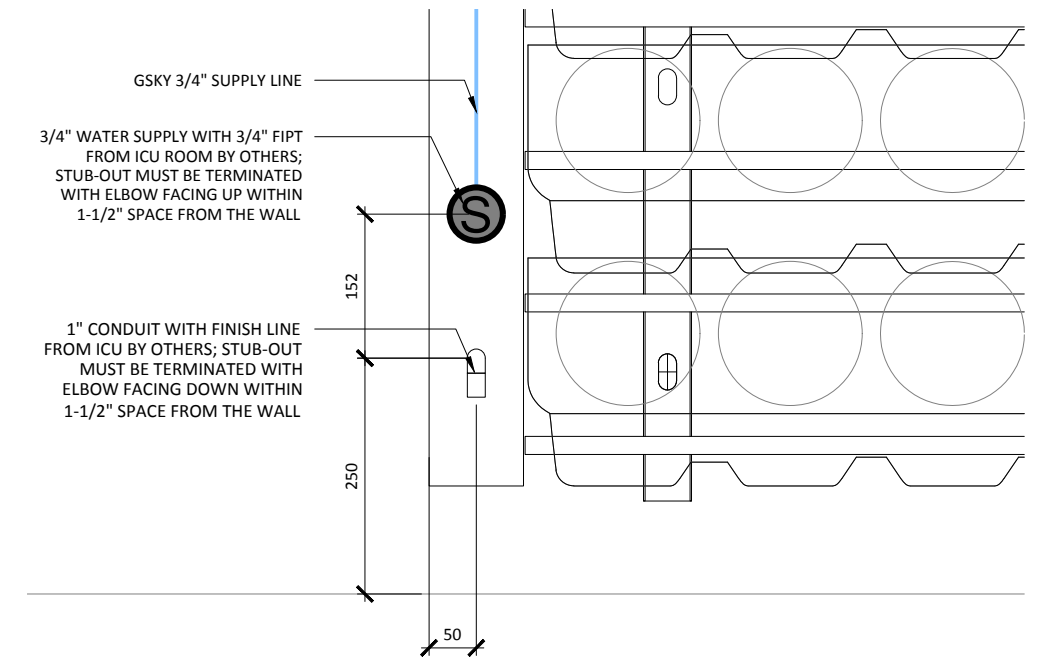
MAINT. ACCESS

Walls over 40' / 12m need additional considerations. See GSKy maintenance manual.

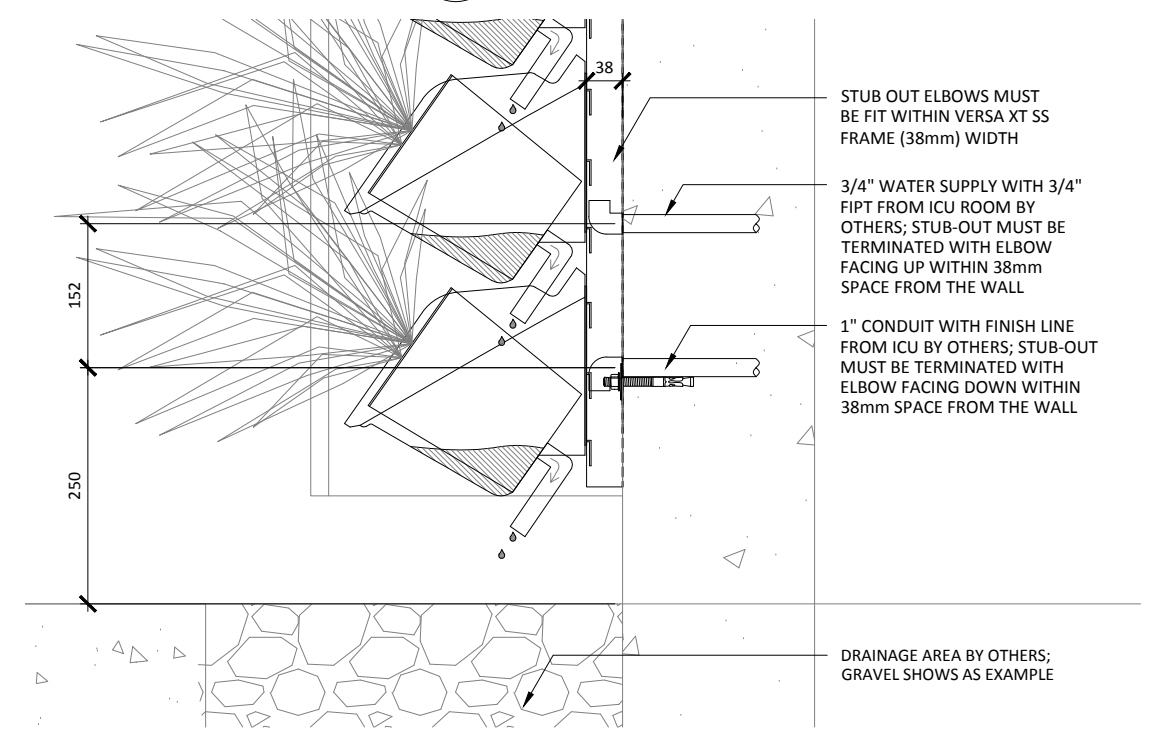
GX 1.0



1 ELEVATION
SCALE: 1:20



3 ELEVATION DETAIL
SCALE: 1:8



2 SECTION
SCALE: 1:8



VERSA WALL [®] XT [™]

XTF-N4 IRRIGATION OVERVIEW

VER. 1.1 297x420 mm (A3)



SYSTEM WEIGHT

Versa XT wall system weight = 30 lb/sq.ft / 146 kg/sq.m.

100 SIDE/TOP

VARIOUS BOTTOM

TRIM

SS brushed finish or powder coated aluminum See gsky.com for details.



REMOTE ICU

| SERVICE | | | |
|-----------|---------------|---------------|---------------|
| AUTOMATED | At ICU + WALL | At ICU + WALL | At ICU + WALL |

IRRIGATION

Require GSKY's consultation for > 35' / 10.5 m height wall or > 100' / 30.5 m wide wall.

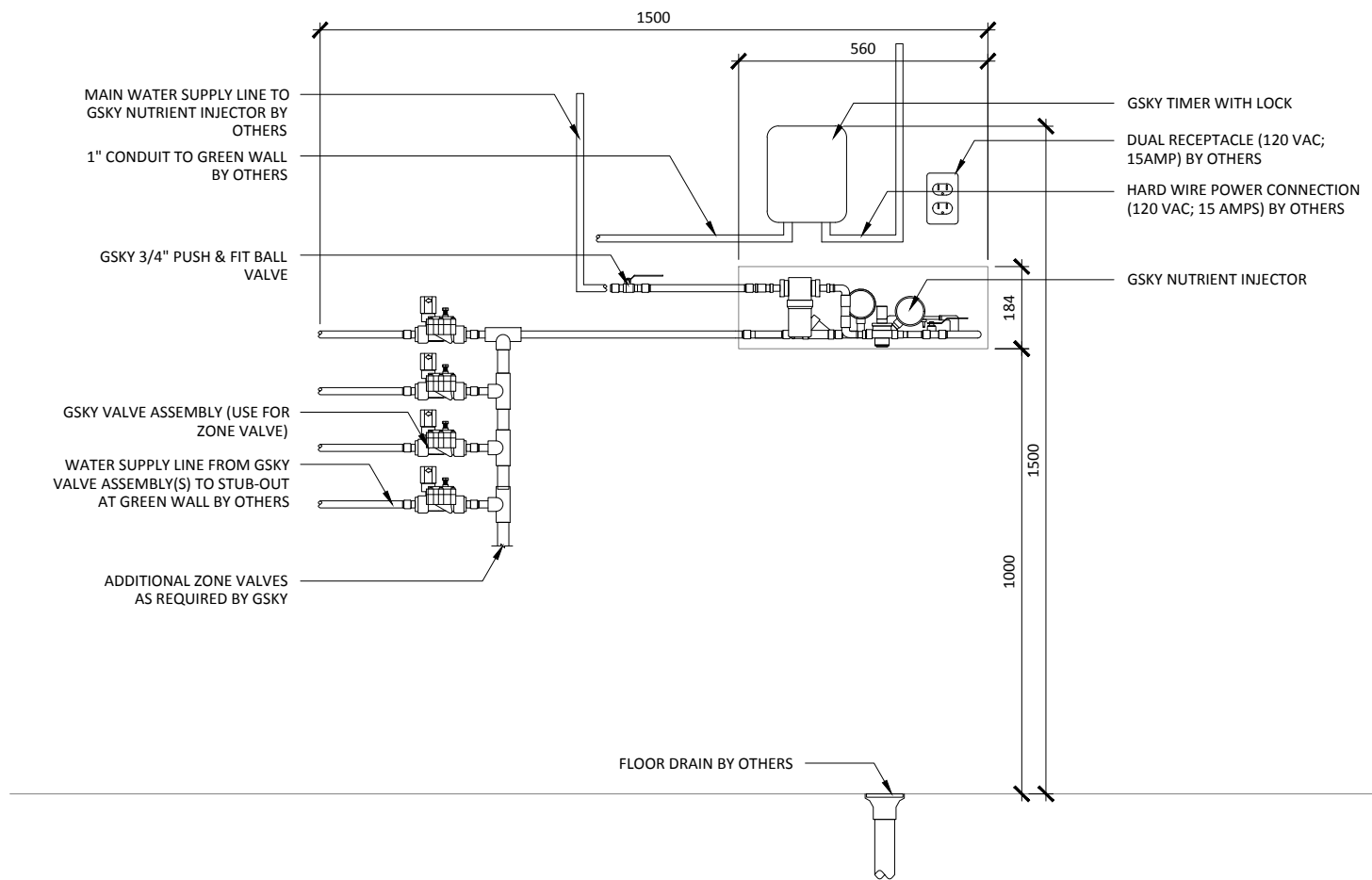
| < 8' | OK | | | |
|-------|----|----|----|--|
| < 13' | OK | OK | | |
| > 13' | OK | OK | OK | |

MAINT. ACCESS

Walls over 40' / 12m need additional considerations. See GSKY maintenance manual.

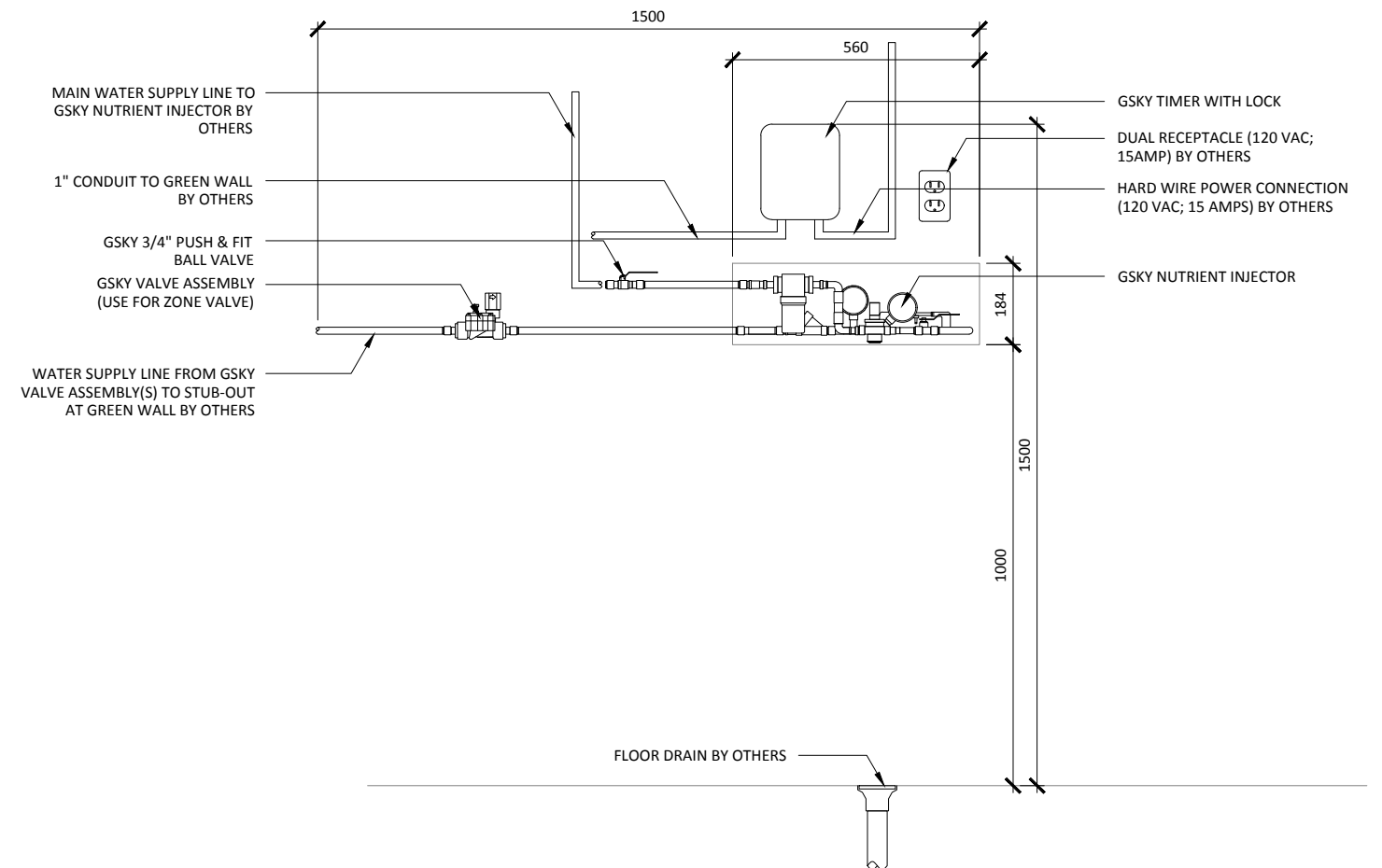
GX 2.0

***REQUIREMENTS:**
 *GSKY NUTRIENT INJECTOR - 184 (mm) h x 560 (mm) w x 181 (mm) d
 *19MM FIPT INLET / OUTLET
 *EASY ACCESS FOR MAINTENANCE
 *ADEQUATE PRESSURE TO GET MIN 40 PSI AT GREEN WALL STUB-OUT(S)
 *120V / 15AMP GFCI POWER RECEPTACLE
 *BACK-FLOW PREVENTOR AS REQUIRED BY OTHERS (WITH DRAIN)
 *FLOOR DRAIN FOR MAINTENANCE
 *WATER SUPPLY LINE FROM THE ICU TO WALL STUB-OUT(S) MUST BE FREEZE PROTECTED FOR WINTER OPERATION



1 IRRIGATION CONTROL UNIT (ZONE VALVE AT ICU)
 SCALE 1:16

***REQUIREMENTS:**
 *GSKY NUTRIENT INJECTOR - 184 (mm) h x 560 (mm) w x 181 (mm) d
 *19MM FIPT INLET / OUTLET
 *EASY ACCESS FOR MAINTENANCE
 *ADEQUATE PRESSURE TO GET MIN 40 PSI AT GREEN WALL STUB-OUT(S)
 *120V / 15AMP GFCI POWER RECEPTACLE
 *BACK-FLOW PREVENTOR AS REQUIRED BY OTHERS (WITH DRAIN)
 *FLOOR DRAIN FOR MAINTENANCE
 *WATER SUPPLY LINE FROM THE ICU TO WALL STUB-OUT(S) MUST BE FREEZE PROTECTED FOR WINTER OPERATION



2 IRRIGATION CONTROL UNIT (ZONE VALVE AT GREEN WALL)
 SCALE 1:16



VERSA WALL [®] **XT** [™]

XTF-N4 IRRIGATION SYSTEM

VER. 1.1 297x420 mm (A3)



SYSTEM WEIGHT

Versa XT wall system weight
 = 30 lb/sq.ft / 146 kg/sq.m.

100 SIDE/TOP

VARIOUS BOTTOM

TRIM

SS brushed finish or
 powder coated aluminum
 See gsky.com for details.



REMOTE ICU

| SERVICE | | | |
|-----------|---------------|---------------|---------------|
| AUTOMATED | At ICU + WALL | At ICU + WALL | At ICU + WALL |

IRRIGATION

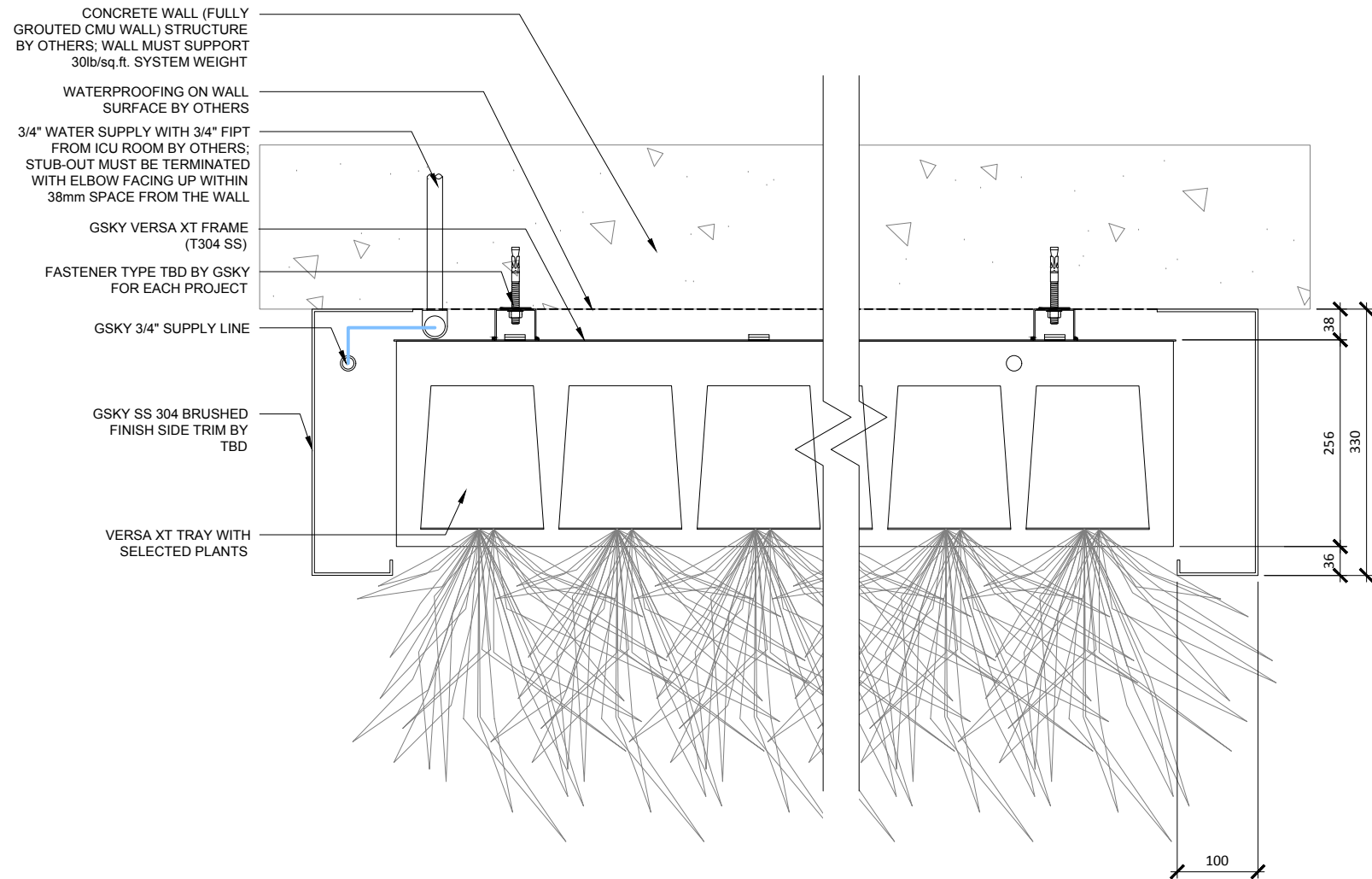
Require GSKy's consultation
 for > 35' / 10.5 m height wall
 or > 100' / 30.5 m wide wall.

| < 8' | OK | | | |
|-------|----|----|----|----|
| < 13' | OK | OK | | |
| > 13' | | OK | OK | OK |

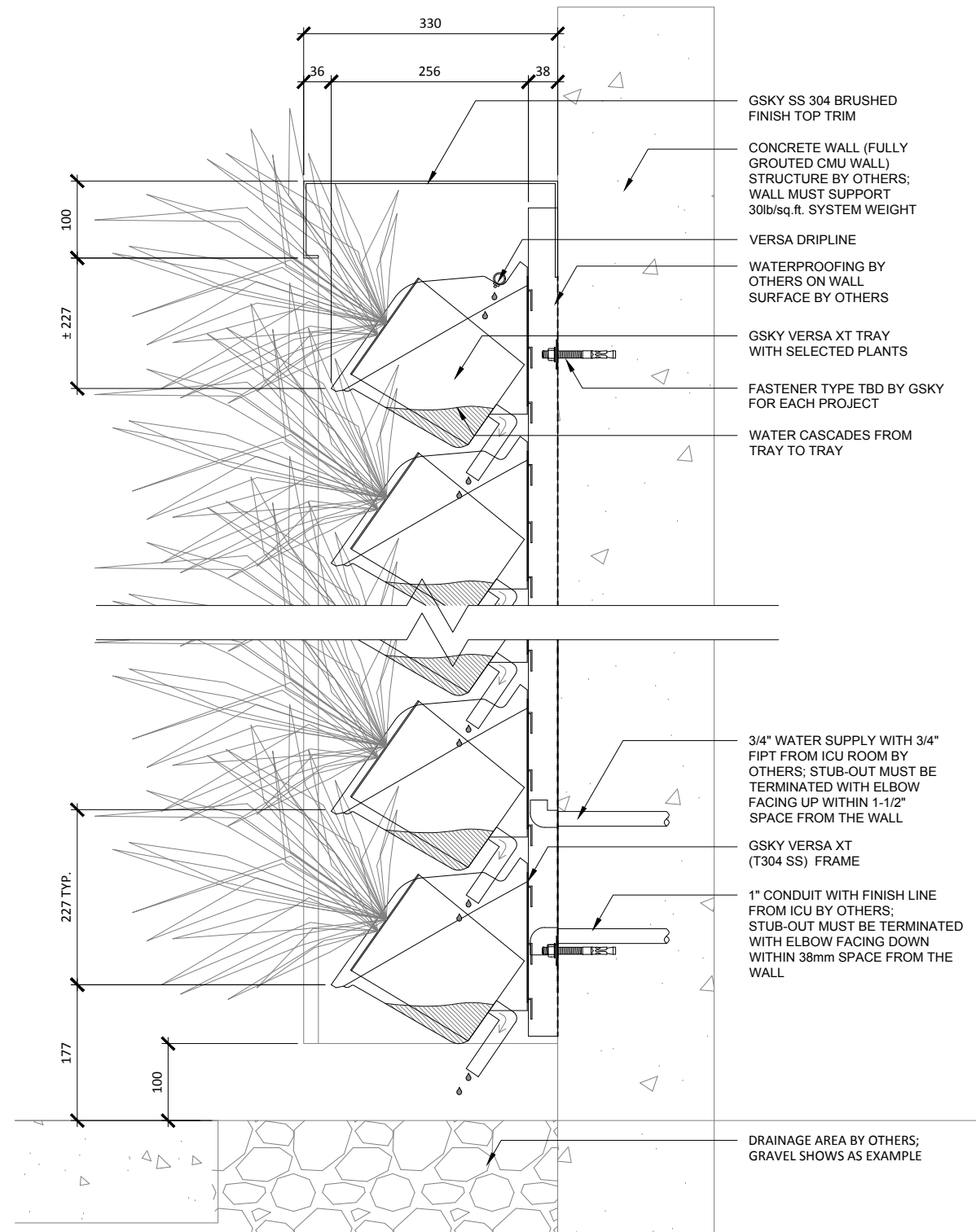
MAINT. ACCESS

Walls over 40' / 12m need additional
 considerations. See GSKy
 maintenance manual.

GX 2.1



1 PLAN DETAIL
SCALE: 1:8



2 SECTION DETAIL
SCALE: 1:8



VERSA WALL [®] **XT** [™]

DETAILS

VER. 1.1

297x420 mm (A3)



SYSTEM WEIGHT

Versa XT wall system weight
= 30 lb/sq.ft / 146 kg/sq.m.

100 SIDE/TOP

VARIOUS BOTTOM

TRIM

SS brushed finish or
powder coated aluminum
See gsky.com for details.



REMOTE ICU

| SERVICE | | | |
|-----------|---------------|---------------|---------------|
| AUTOMATED | At ICU + WALL | At ICU + WALL | At ICU + WALL |

IRRIGATION

Require GSKY's consultation
for > 35' / 10.5 m height wall
or > 100' / 30.5 m wide wall.

| < 8' | OK | | | |
|-------|----|----|----|--|
| < 13' | OK | OK | | |
| > 13' | OK | OK | OK | |

MAINT. ACCESS

Walls over 40' / 12m need additional
considerations. See GSKY
maintenance manual.

GX 3.0