

GSKY SS 304 TOP TRIM

WATERPROOFING BY OTHERS

19mm PLYWOOD BACKING BY OTHERS

VERSA DRIPLINE

GSKY VERSA XT TRAYS

GSKY 3/4" SUPPLY LINE

GSKY NUTRIENT INJECTOR

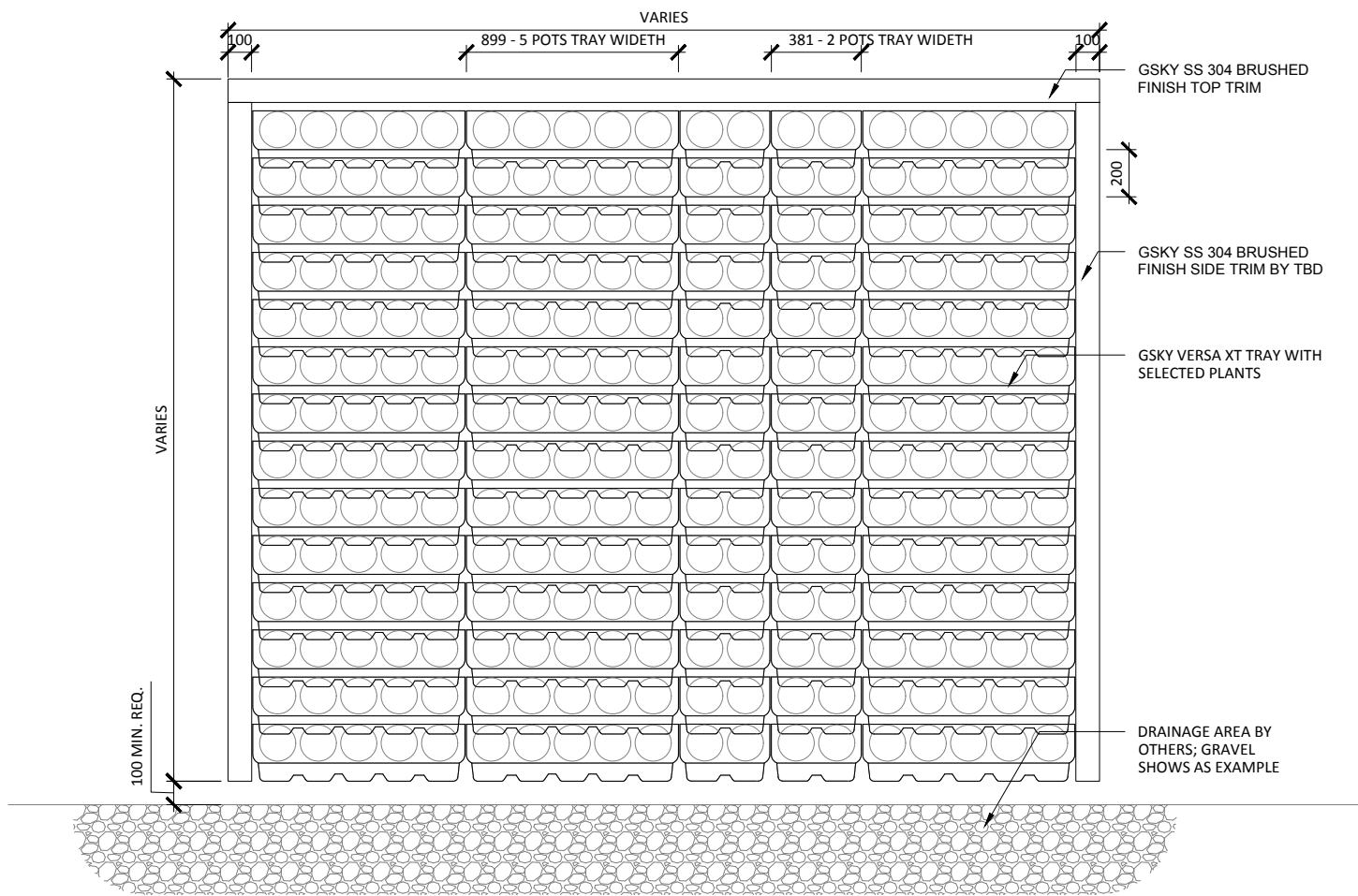
DRAINAGE AREA

GSKY SS 304 SIDE TRIM

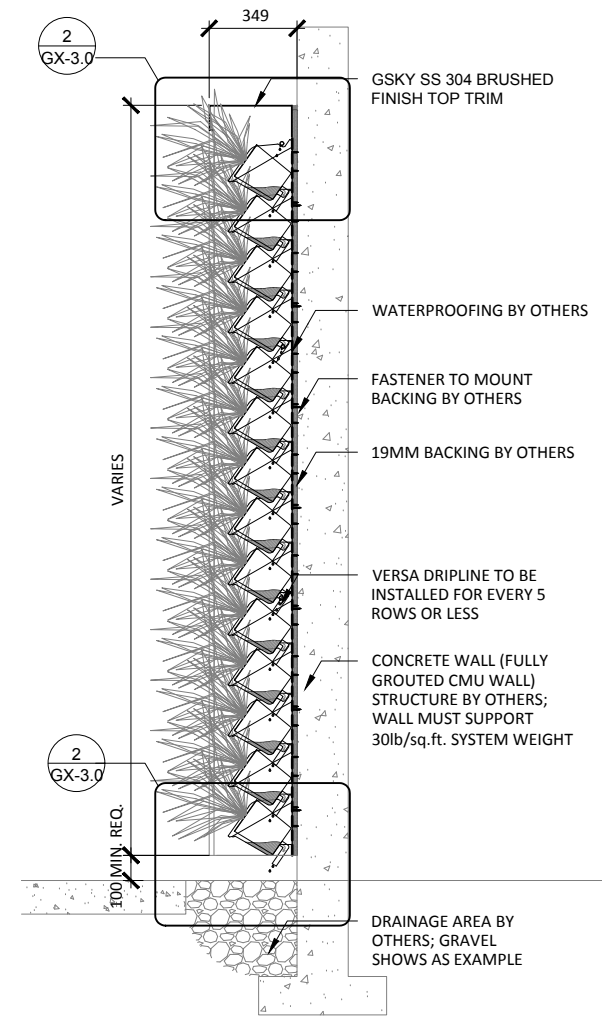


VERSA WALL® XT™

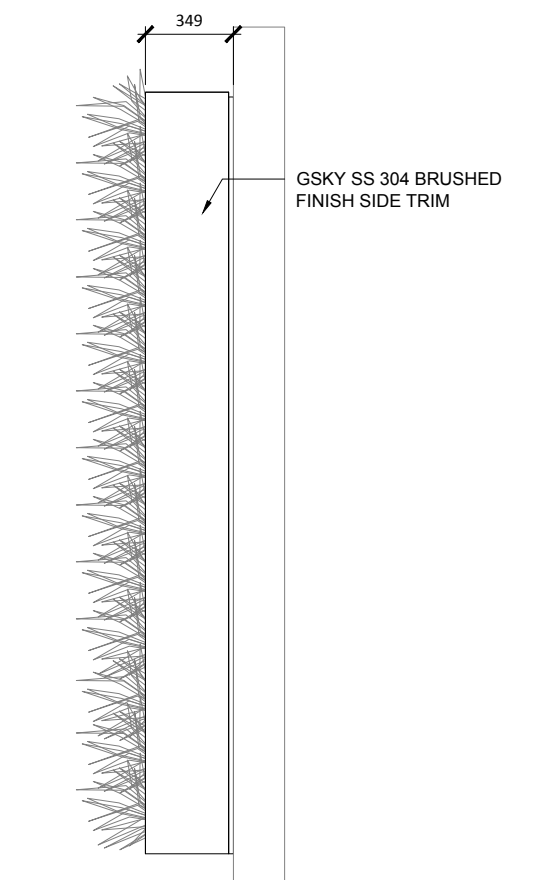
TO THE GROUND / BACKING OPTION
XTB-N4



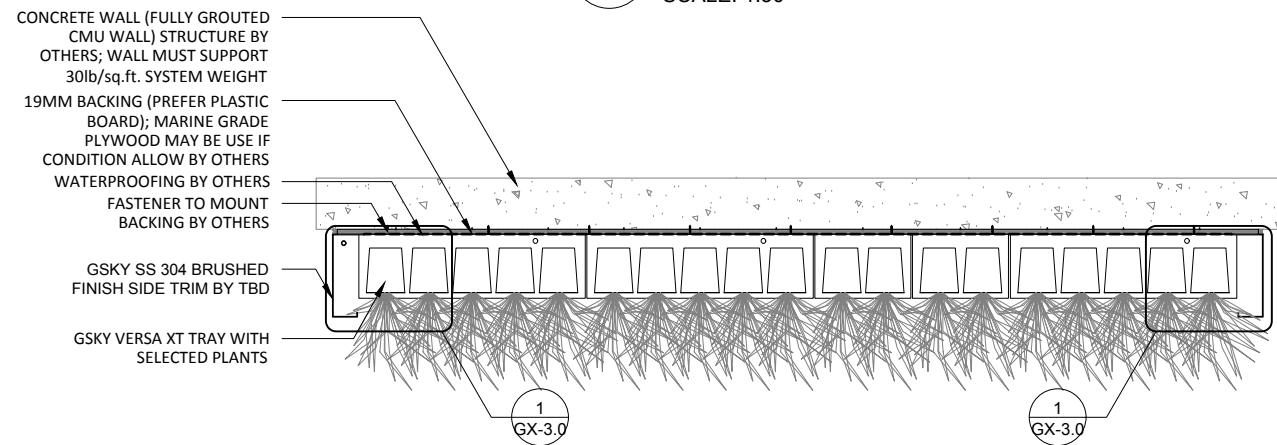
1 ELEVATION
SCALE: 1:30



3 SECTION
SCALE: 1:30



4 SIDE
SCALE: 1:30



2 PLAN
SCALE: 1:30



VERSA WALL [®] **XT** [™]

XTB-N4 GENERAL OVERVIEW

VER. 1.1 297x420 mm (A3)



SYSTEM WEIGHT

Versa XT wall system weight
= 30 lb/sq.ft / 1.3 kg/sq.m.

100 SIDE/TOP

VARIOUS BOTTOM

TRIM

SS brushed finish or
powder coated aluminum
See gsky.com for details.



REMOTE ICU

SERVICE			
AUTOMATED	At ICU + WALL	At ICU + WALL	At ICU + WALL

IRRIGATION

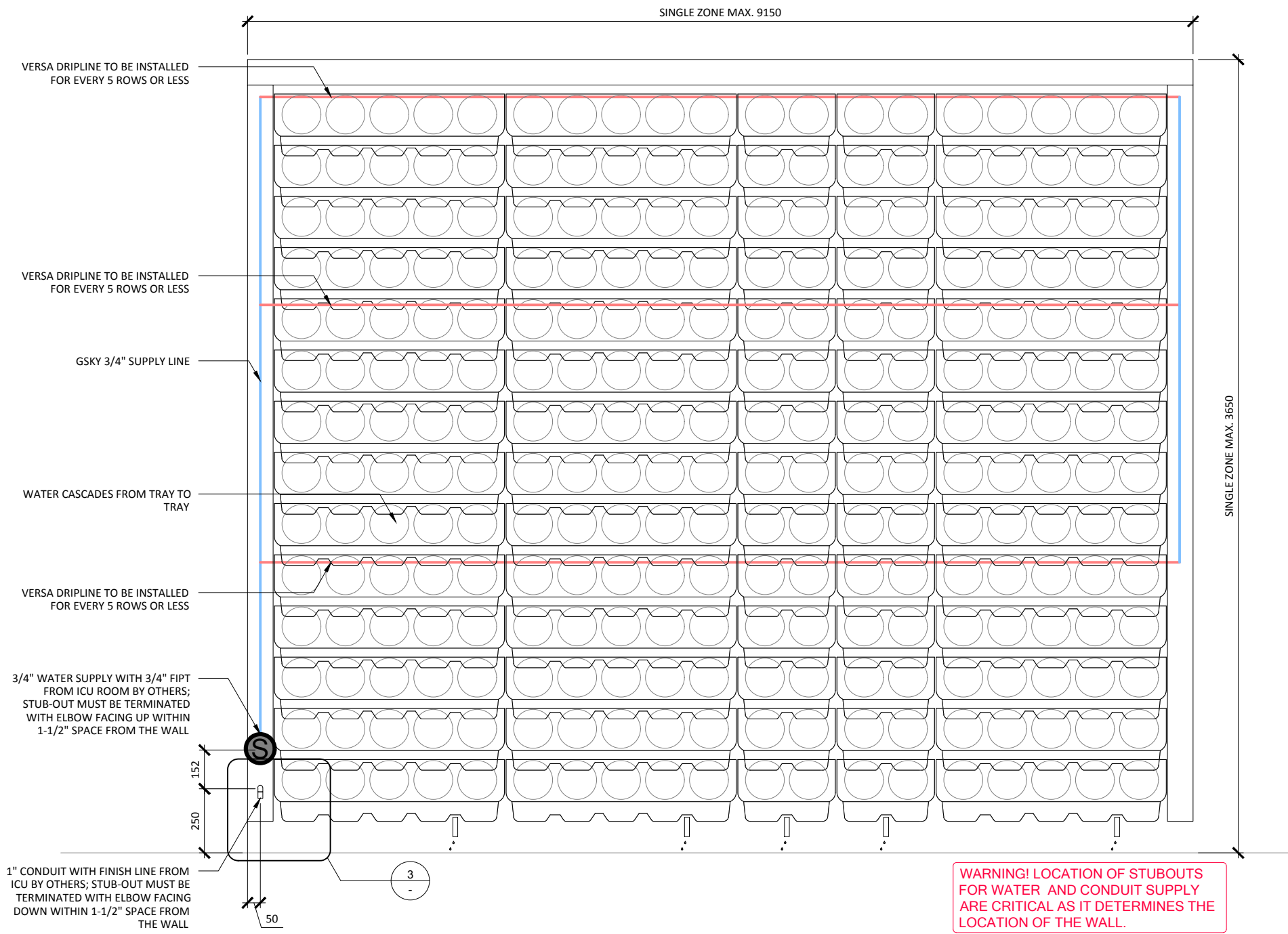
Require GSKy's consultation
for > 35' / 10.5 m height wall
or > 100' / 30.5 m wide wall.

< 8'	OK			
< 13'	OK	OK		
> 13'		OK	OK	OK

MAINT. ACCESS

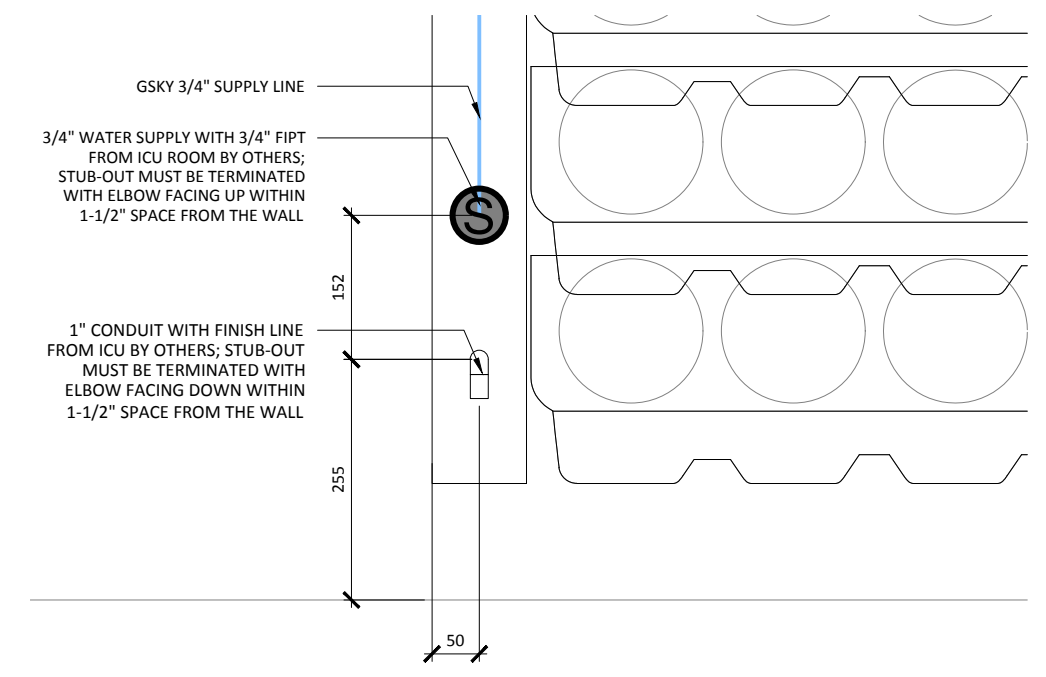
Walls over 40' / 12m need additional
considerations. See GSKy
maintenance manual.

GX 1.0

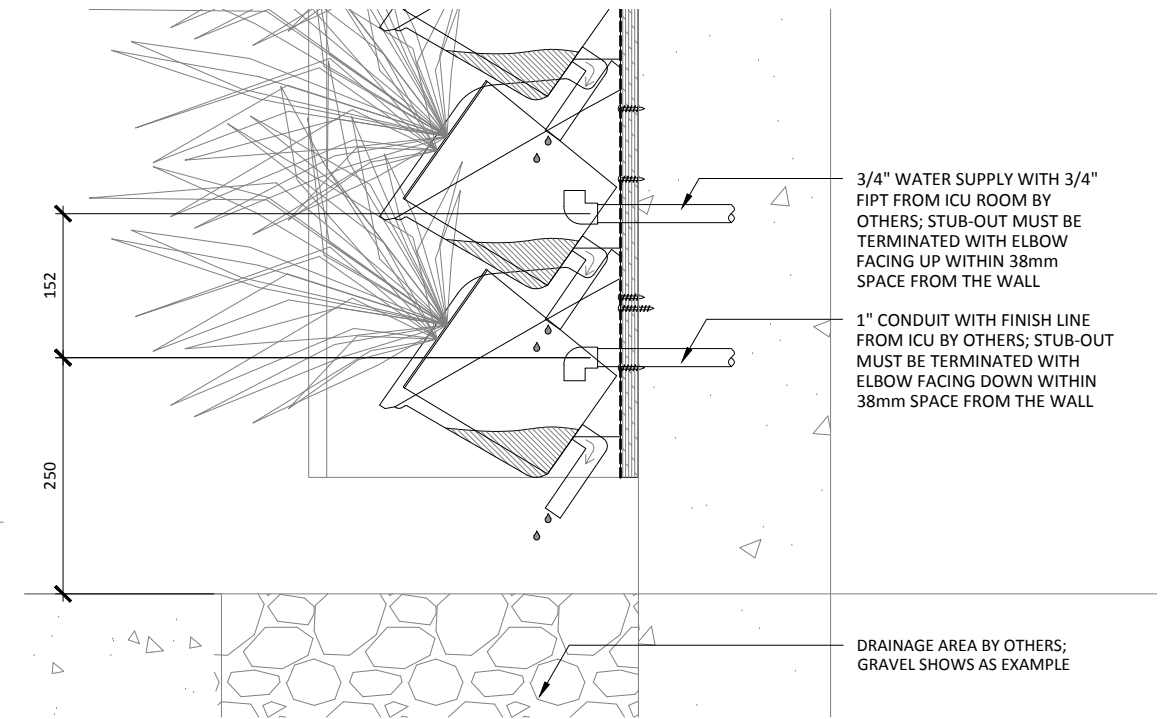


1 ELEVATION
SCALE: 1:20

WARNING! LOCATION OF STUBOUTS FOR WATER AND CONDUIT SUPPLY ARE CRITICAL AS IT DETERMINES THE LOCATION OF THE WALL.



3 ELEVATION DETAIL
SCALE: 1:8



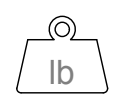
2 SECTION
SCALE: 1:8



VERSA WALL [®] **XT** [™]

XTB-N4 IRRIGATION OVERVIEW

VER. 1.1 297x420 mm (A3)



SYSTEM WEIGHT
Versa XT wall system weight
= 30 lb/sq.ft / 1.3 kg/sq.m.

100 SIDE/TOP
VARIOUS BOTTOM

TRIM
SS brushed finish or
powder coated aluminum
See gsky.com for details.



REMOTE ICU

SERVICE			
AUTOMATED	At ICU + WALL	At ICU + WALL	At ICU + WALL

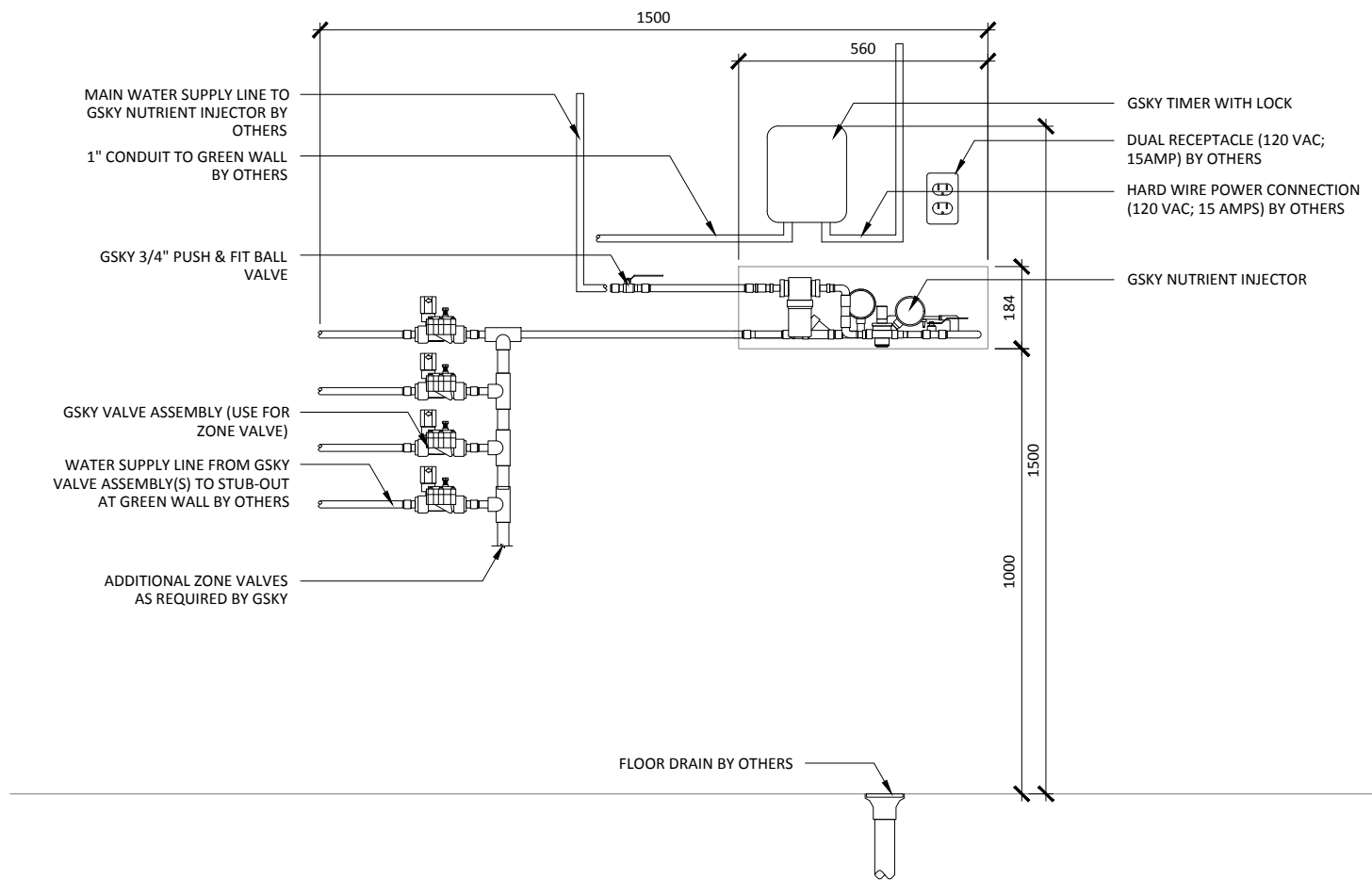
IRRIGATION
Require GSKy's consultation
for > 35' / 10.5 m height wall
or > 100' / 30.5 m wide wall.

< 8'	OK			
< 13'	OK	OK		
> 13'	OK	OK	OK	

MAINT. ACCESS
Walls over 40' / 12m need additional
considerations. See GSKy
maintenance manual.

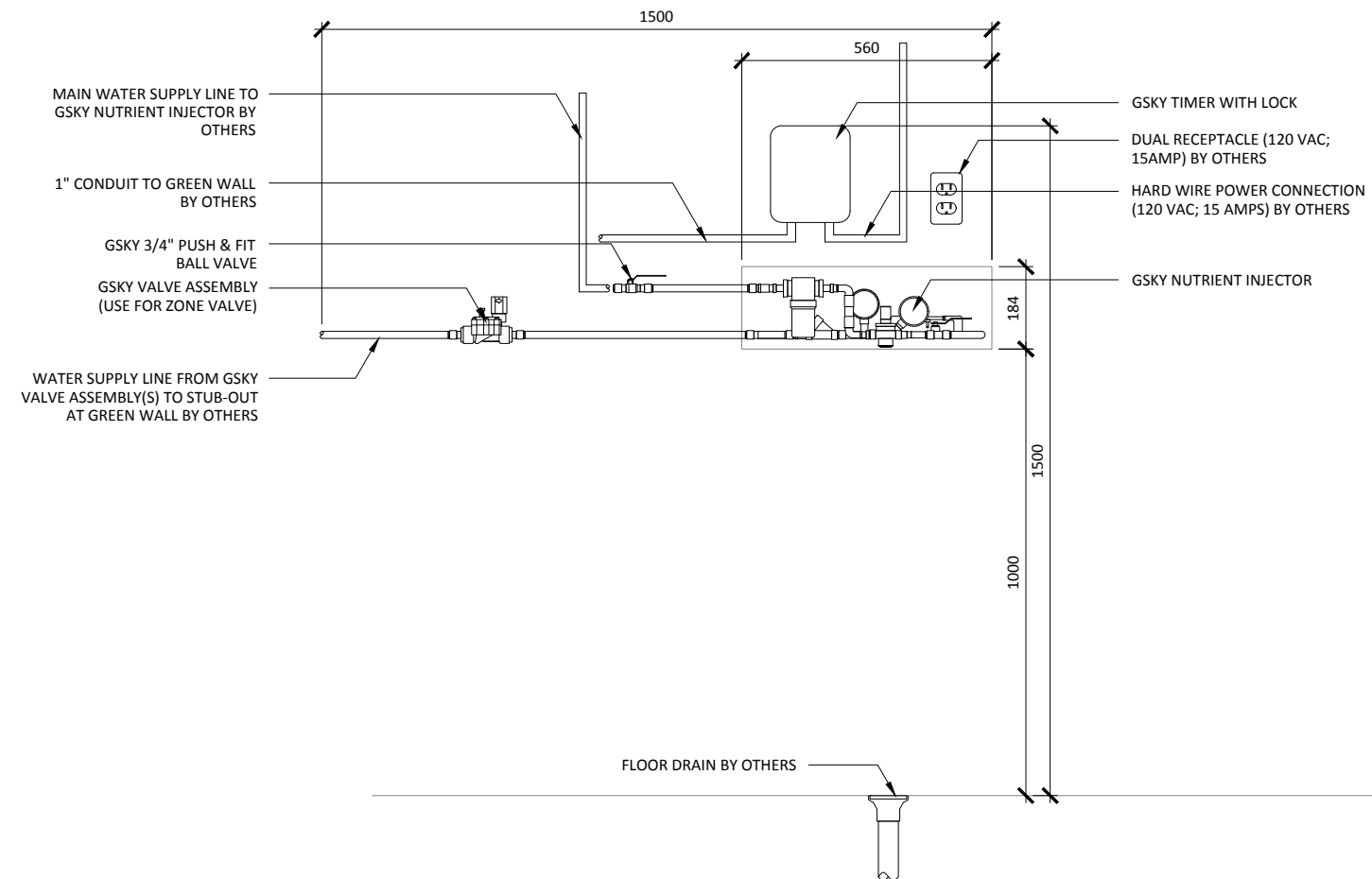
GX 2.0

***REQUIREMENTS:**
 *GSKY NUTRIENT INJECTOR - 184 (mm) h x 560 (mm) w x 181 (mm) d
 *19MM FIPT INLET / OUTLET
 *EASY ACCESS FOR MAINTENANCE
 *ADEQUATE PRESSURE TO GET MIN 40 PSI AT GREEN WALL STUB-OUT(S)
 *120V / 15AMP GFCI POWER RECEPTACLE
 *BACK-FLOW PREVENTOR AS REQUIRED BY OTHERS (WITH DRAIN)
 *FLOOR DRAIN FOR MAINTENANCE
 *WATER SUPPLY LINE FROM THE ICU TO WALL STUB-OUT(S) MUST BE FREEZE PROTECTED FOR WINTER OPERATION



1 IRRIGATION CONTROL UNIT (ZONE VALVE AT ICU)
 SCALE 1:16

***REQUIREMENTS:**
 *GSKY NUTRIENT INJECTOR - 184 (mm) h x 560 (mm) w x 181 (mm) d
 *19MM FIPT INLET / OUTLET
 *EASY ACCESS FOR MAINTENANCE
 *ADEQUATE PRESSURE TO GET MIN 40 PSI AT GREEN WALL STUB-OUT(S)
 *120V / 15AMP GFCI POWER RECEPTACLE
 *BACK-FLOW PREVENTOR AS REQUIRED BY OTHERS (WITH DRAIN)
 *FLOOR DRAIN FOR MAINTENANCE
 *WATER SUPPLY LINE FROM THE ICU TO WALL STUB-OUT(S) MUST BE FREEZE PROTECTED FOR WINTER OPERATION



2 IRRIGATION CONTROL UNIT (ZONE VALVE AT GREEN WALL)
 SCALE 1:16



VERSA WALL [®] **XT** [™]

XTB-N4 IRRIGATION SYSTEM

VER. 1.1 297x420 mm (A3)



SYSTEM WEIGHT

Versa XT wall system weight = 30 lb/sq.ft / 1.3 kg/sq.m.

100 SIDE/TOP

VARIOUS BOTTOM

TRIM

SS brushed finish or powder coated aluminum
 See gsky.com for details.



REMOTE ICU

SERVICE			
AUTOMATED	At ICU + WALL	At ICU + WALL	At ICU + WALL

IRRIGATION

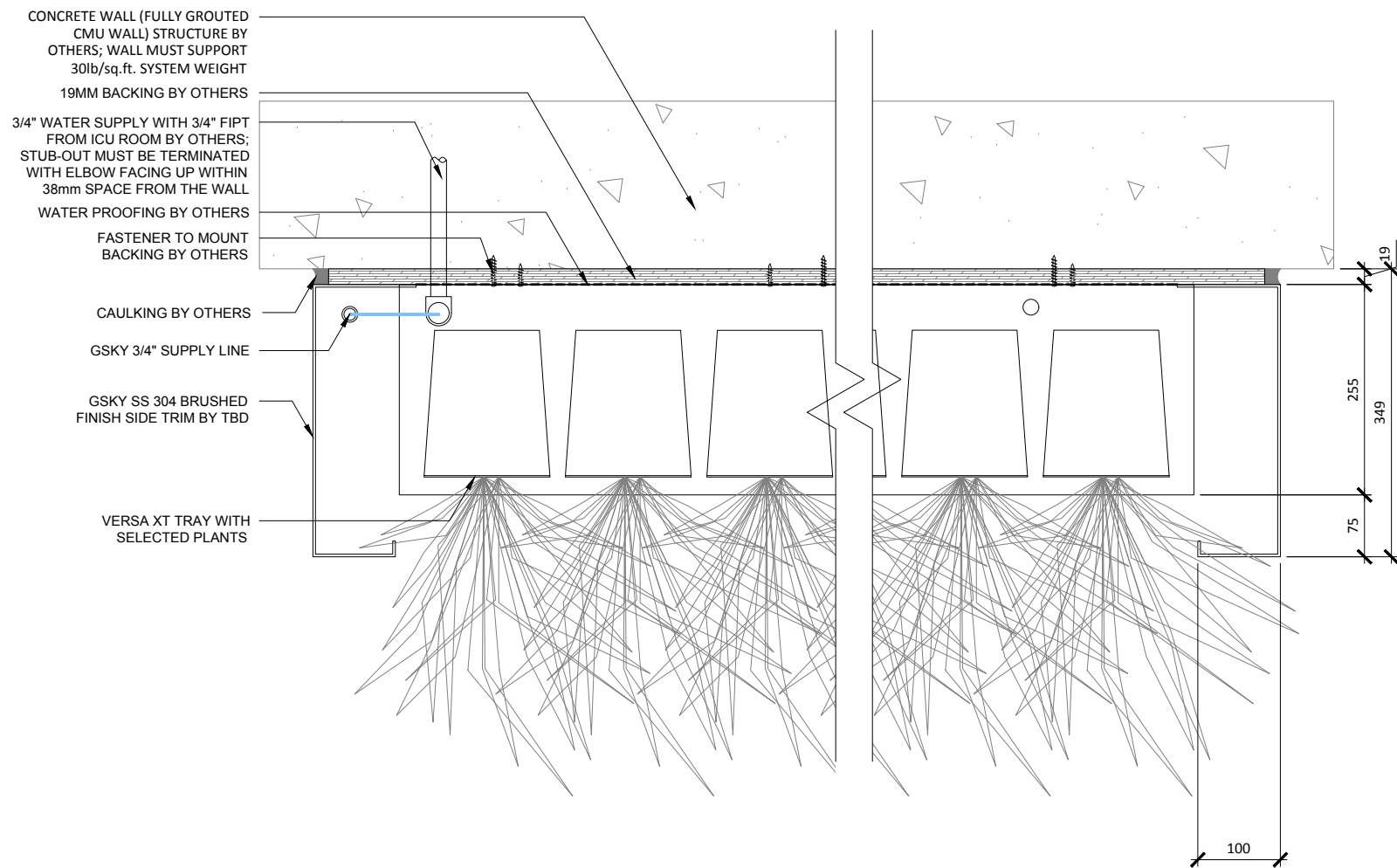
Require GSKy's consultation for > 35' / 10.5 m height wall or > 100' / 30.5 m wide wall.

< 8'	OK			
< 13'	OK	OK		
> 13'		OK	OK	OK

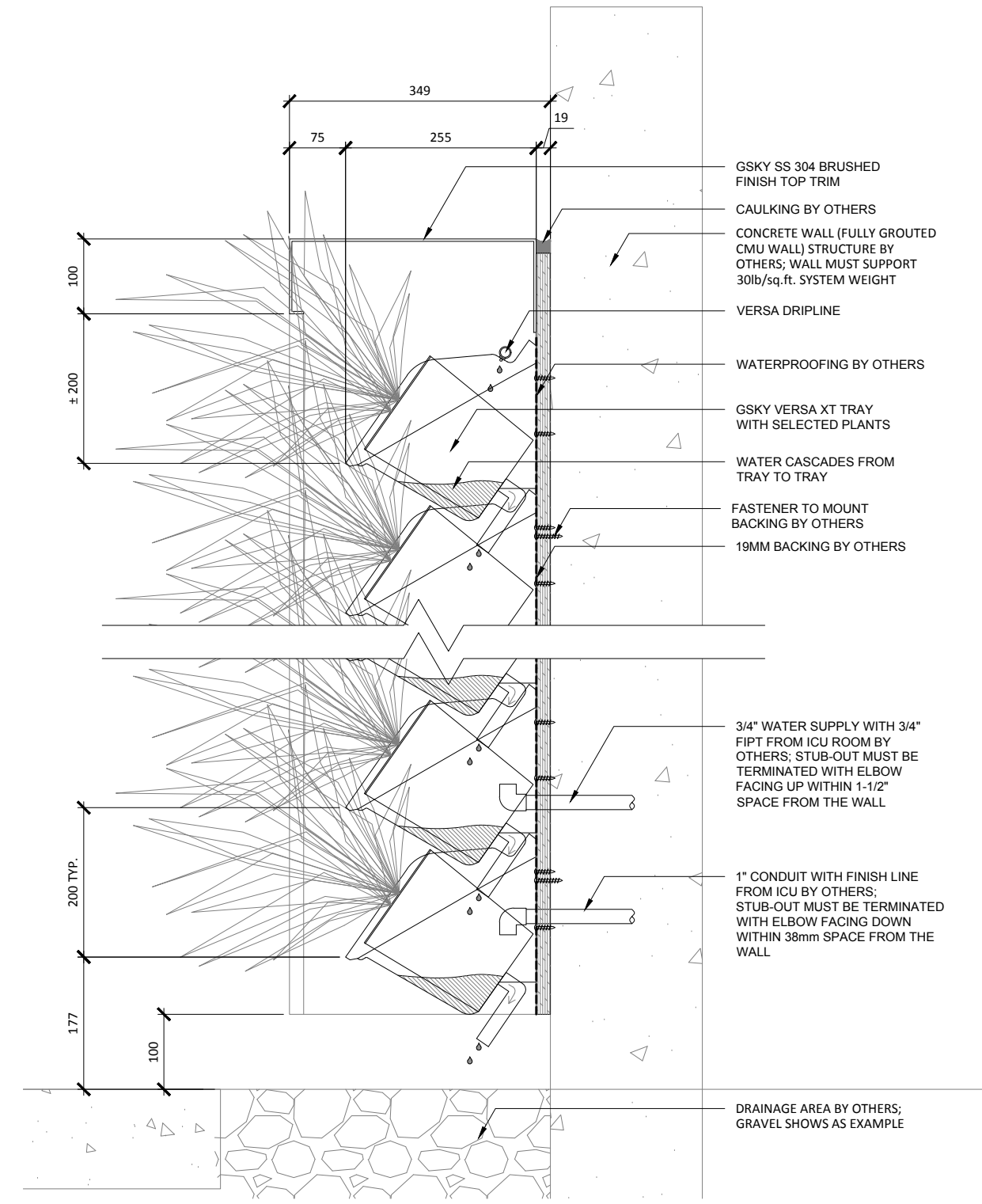
MAINT. ACCESS

Walls over 40' / 12m need additional considerations. See GSKy maintenance manual.

GX 2.1



1 PLAN DETAIL
SCALE: 1:8



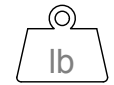
2 SECTION DETAIL
SCALE: 1:8



VERSA WALL [®] **XT** [™]

XTB-N4 DETAILS

VER. 1.1 297x420 mm (A3)



SYSTEM WEIGHT
Versa XT wall system weight
= 30 lb/sq.ft / 1.3 kg/sq.m.

100	SIDE/TOP
VARIOUS	BOTTOM

TRIM
SS brushed finish or
powder coated aluminum
See gsky.com for details.



REMOTE ICU

SERVICE			
AUTOMATED	At ICU + WALL	At ICU + WALL	At ICU + WALL

IRRIGATION
Require GSKY's consultation
for > 35' / 10.5 m height wall
or > 100' / 30.5 m wide wall.

< 8'	OK			
< 13'	OK	OK		
> 13'	OK	OK	OK	

MAINT. ACCESS
Walls over 40' / 12m need additional
considerations. See GSKY
maintenance manual.

GX 3.0