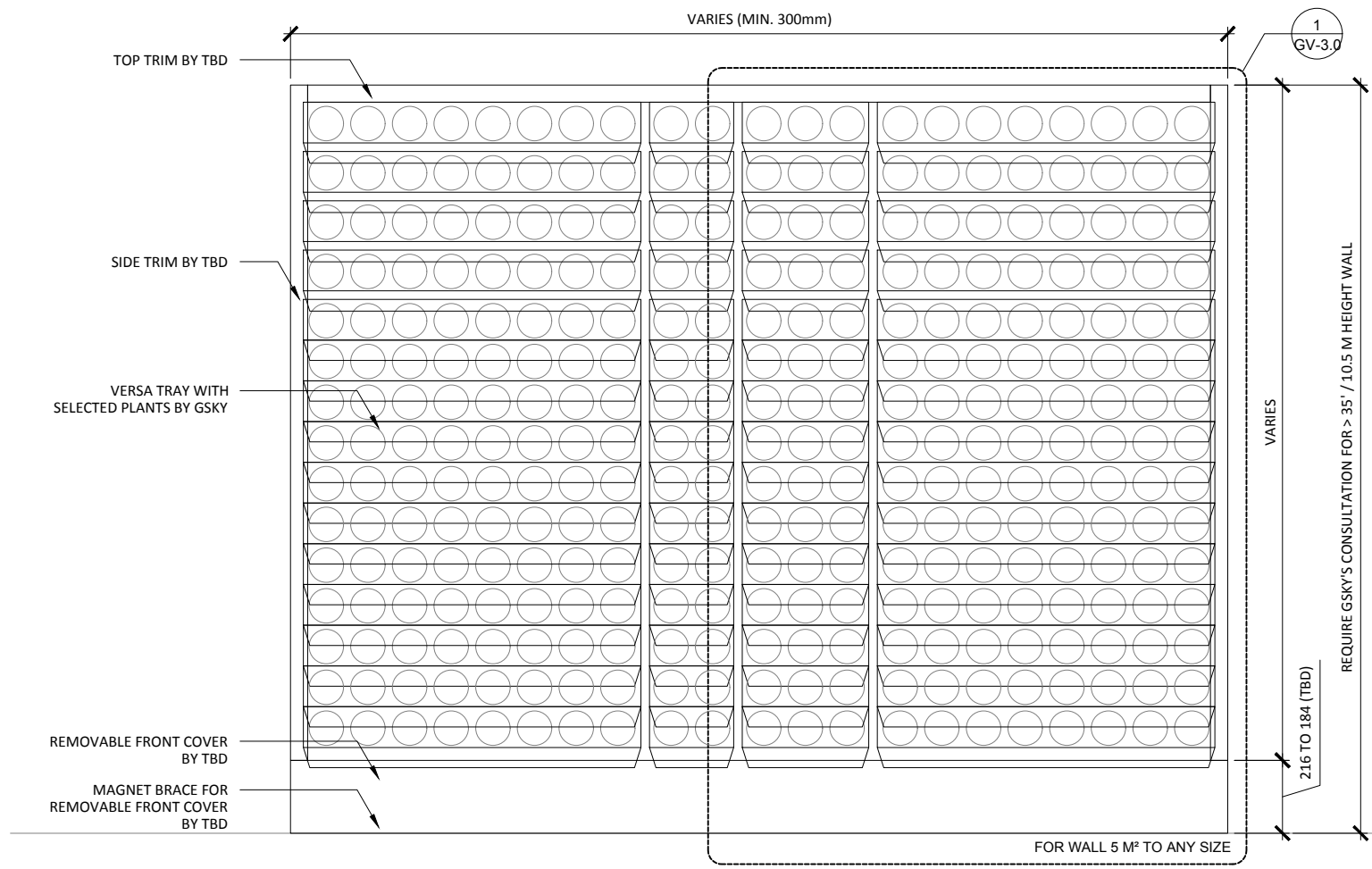


- TOP TRIM BY TBD
- 19mm PLYWOOD BACKING BY OTHERS
- GSKY 3/4" SUPPLY LINE
- VERSA TRAYS
- VERSA DRIPLINE
- SIDE TRIM BY TBD
- REMOVABLE FRONT COVER BY TBD
- MAGNET BRACE FOR REMOVABLE COVER BY TBD
- BOTTOM TRIM BY TBD
- GSKY TANK
- GSKY PCU

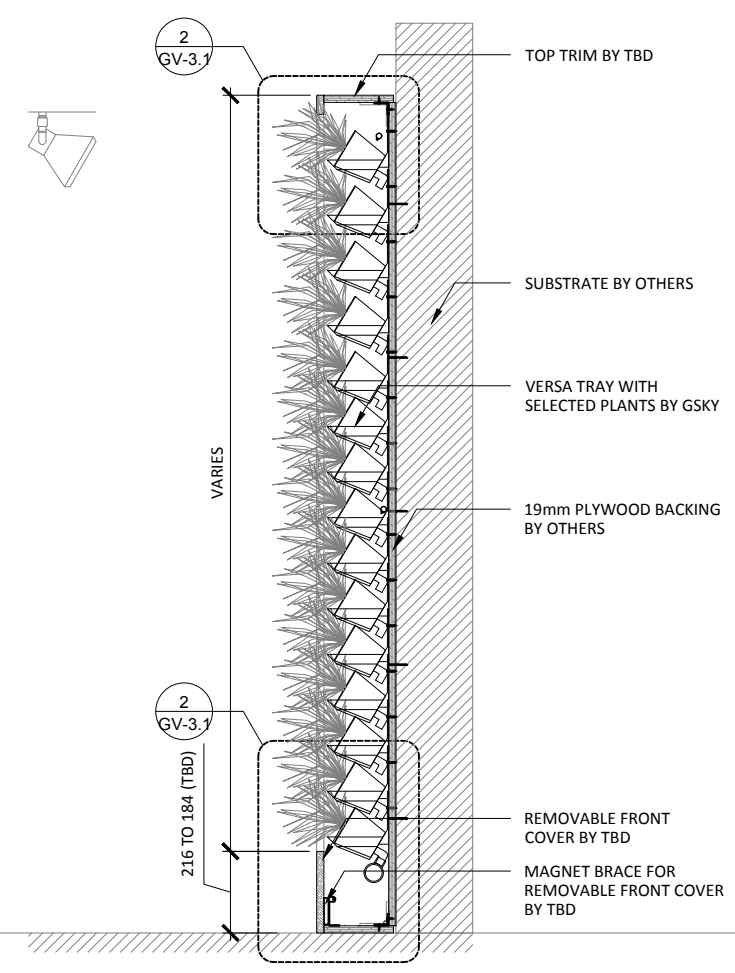


**VERSA WALL**®

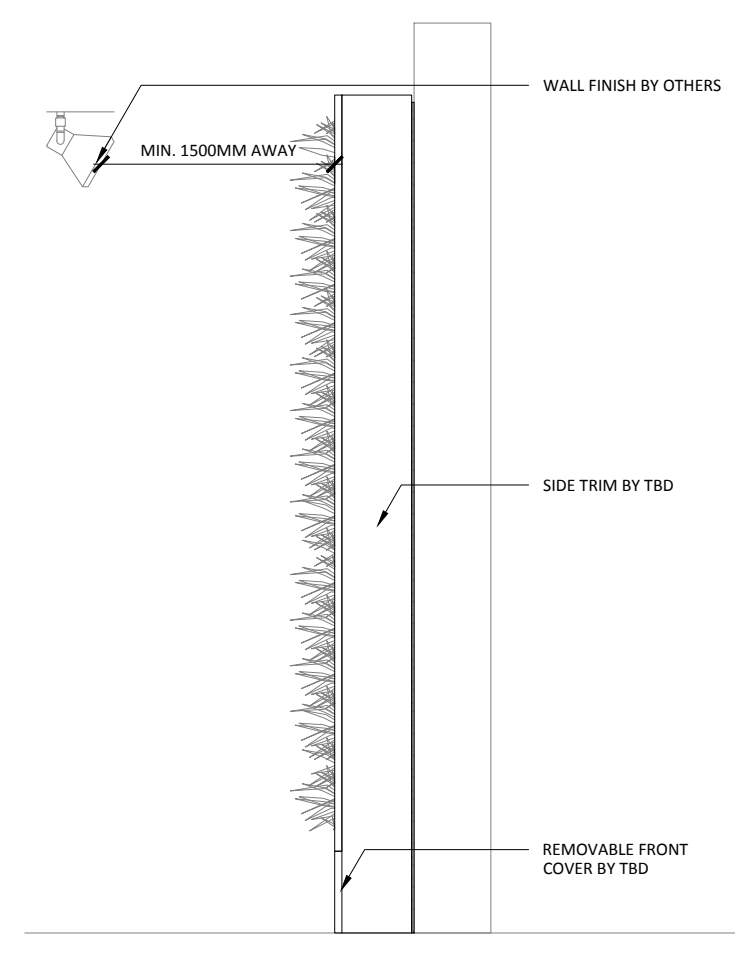
ABOVE THE FLOOR / REMOTE TANK  
VTT-72



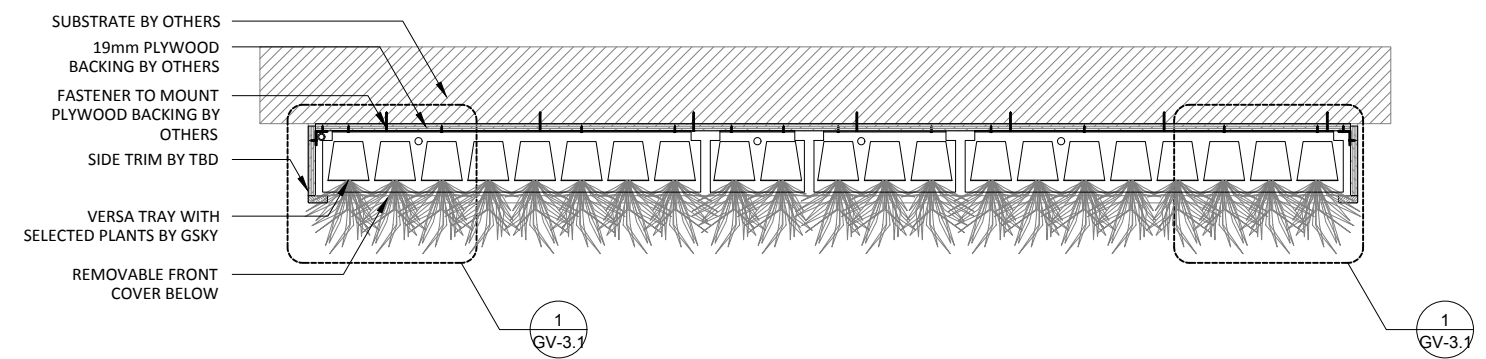
**1 ELEVATION**  
SCALE: 1:20



**3 SECTION**  
SCALE: 1:20



**4 SIDE**  
SCALE: 1:20



**2 PLAN**  
SCALE: 1:20

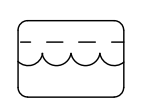


**VERSA WALL**<sup>®</sup>  
VTT-72 GENERAL OVER VIEW  
VER. 1.1      297x420 mm (A3)

**TO FLOOR**  
Weight is 10lbs/ft² 50kg/m²

51 mm	SIDE/TOP
216mm	BOTTOM

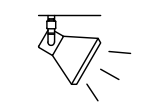
**TRIM**  
NOTE: pipes and edges of trays will be exposed unless recessed or covered



**REMOTE TANKS**  
For 50 ft² / 5 m² to any size  
Min width 11 1/4" / 29cm

SERVICE			
MANUAL	N/A	N/A	N/A
AUTOMATED	At Wall	At Wall	At Wall

**IRRIGATION**  
It is recommended to install a drain whenever possible. Require GSKy's consultation for > 35' / 10.5 m height wall.



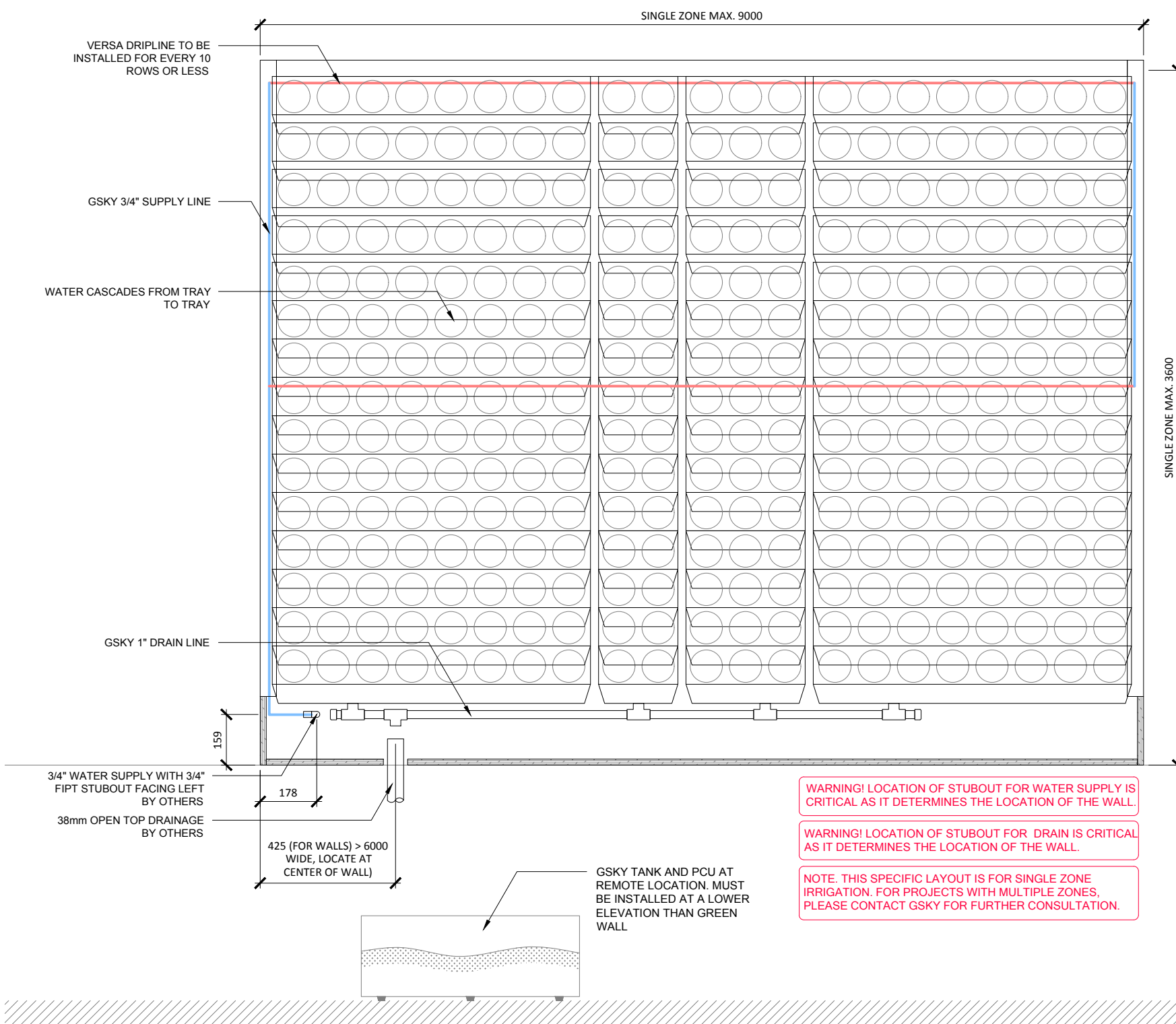
**LIGHTING**  
LED or Metal Halide Lights recommended

Duration	10-12 hrs/day
Color Temp	4000-4500K
Intensity	150fc / 1500 lux (Even Flood)

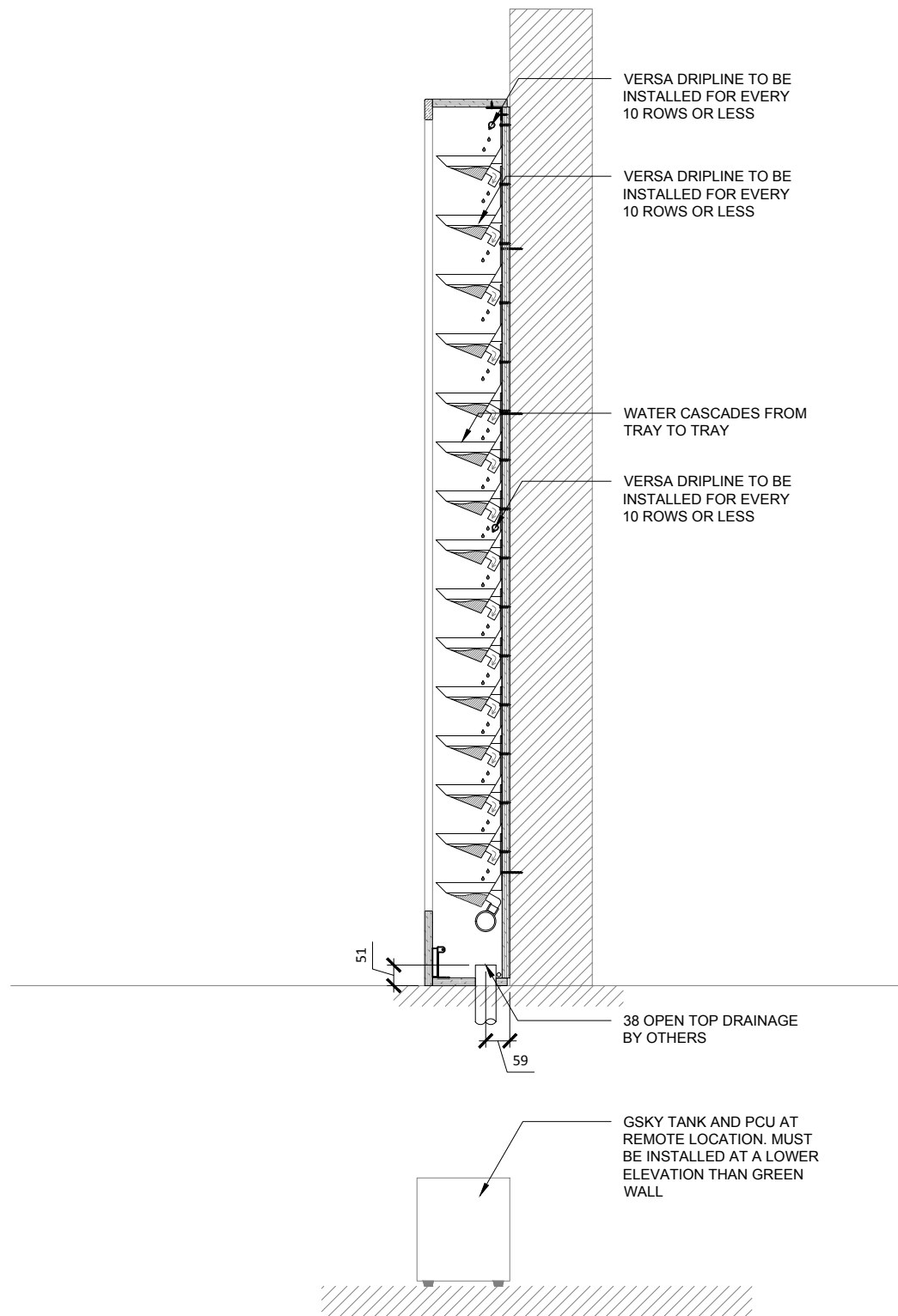
< 2400	OK		
< 4000	OK	OK	
> 4000		OK	OK

**MAINT. ACCESS**  
Walls over 40' / 12m need additional considerations. See GSKy maintenance manual.

**GV1.0**



**1 ELEVATION**  
SCALE: 1:16



**2 SECTION**  
SCALE: 1:16



**VERSA WALL**<sup>®</sup>  
VTT-72 IRRIGATION OVERVIEW  
VER. 1.1 297x420 mm (A3)

**TO FLOOR**  
Weight is 10lbs/ft<sup>2</sup> 50kg/m<sup>2</sup>

51 mm	SIDE/TOP
216mm	BOTTOM

**TRIM**  
NOTE: pipes and edges of trays will be exposed unless recessed or covered

**REMOTE TANKS**  
For 50 ft<sup>2</sup> / 5 m<sup>2</sup> to any size  
Min width 11 1/4" / 29cm

SERVICE			
MANUAL	N/A	N/A	N/A
AUTOMATED	At Wall	At Wall	At Wall

**IRRIGATION**  
It is recommended to install a drain whenever possible. Require GSKY's consultation for > 35' / 10.5 m height wall.

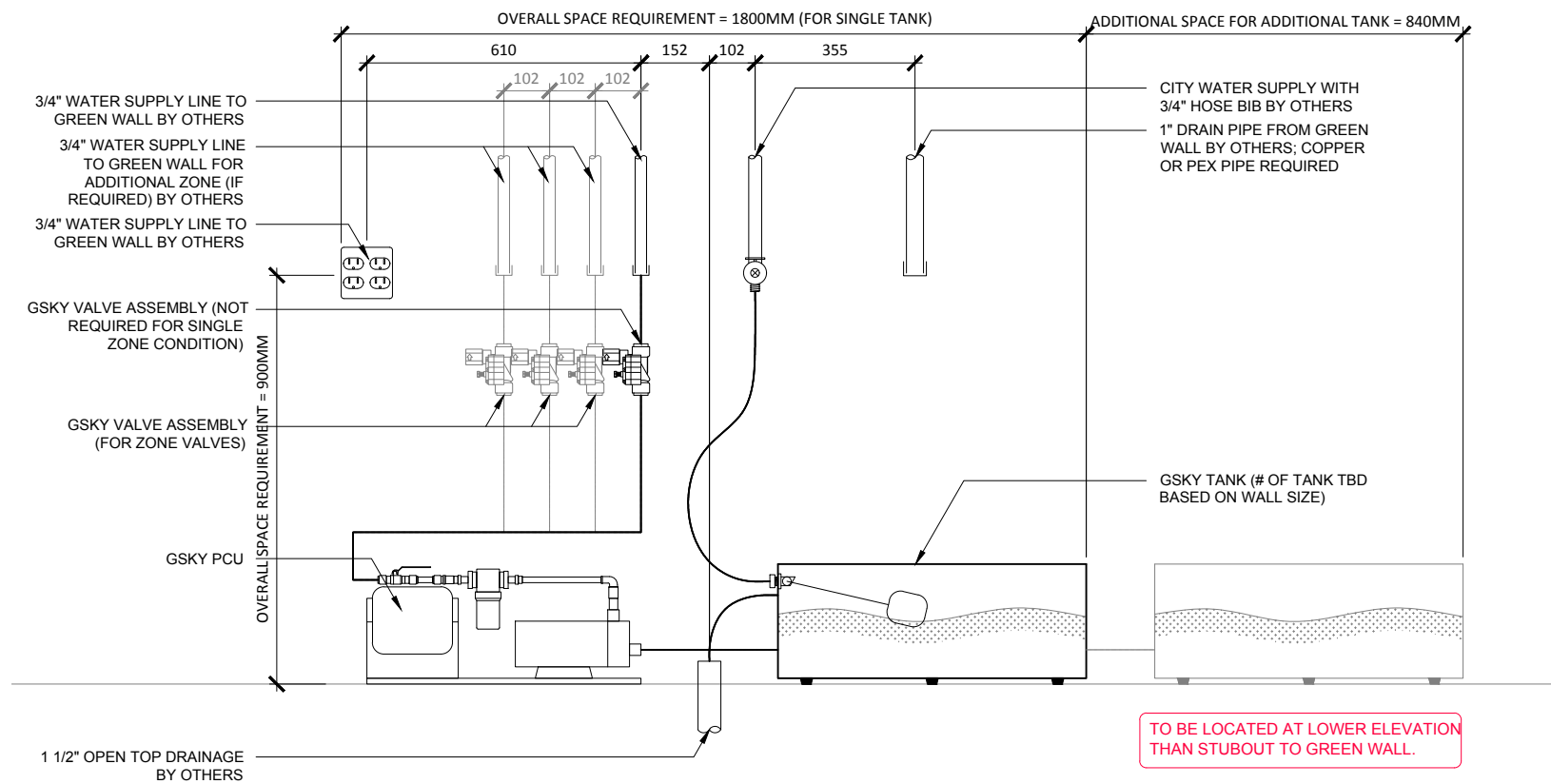
**LIGHTING**  
LED or Metal Halide Lights recommended

Duration  
10-12 hrs/day  
Color Temp  
4000-4500K  
Intensity  
150fc / 1500 lux (Even Flood)

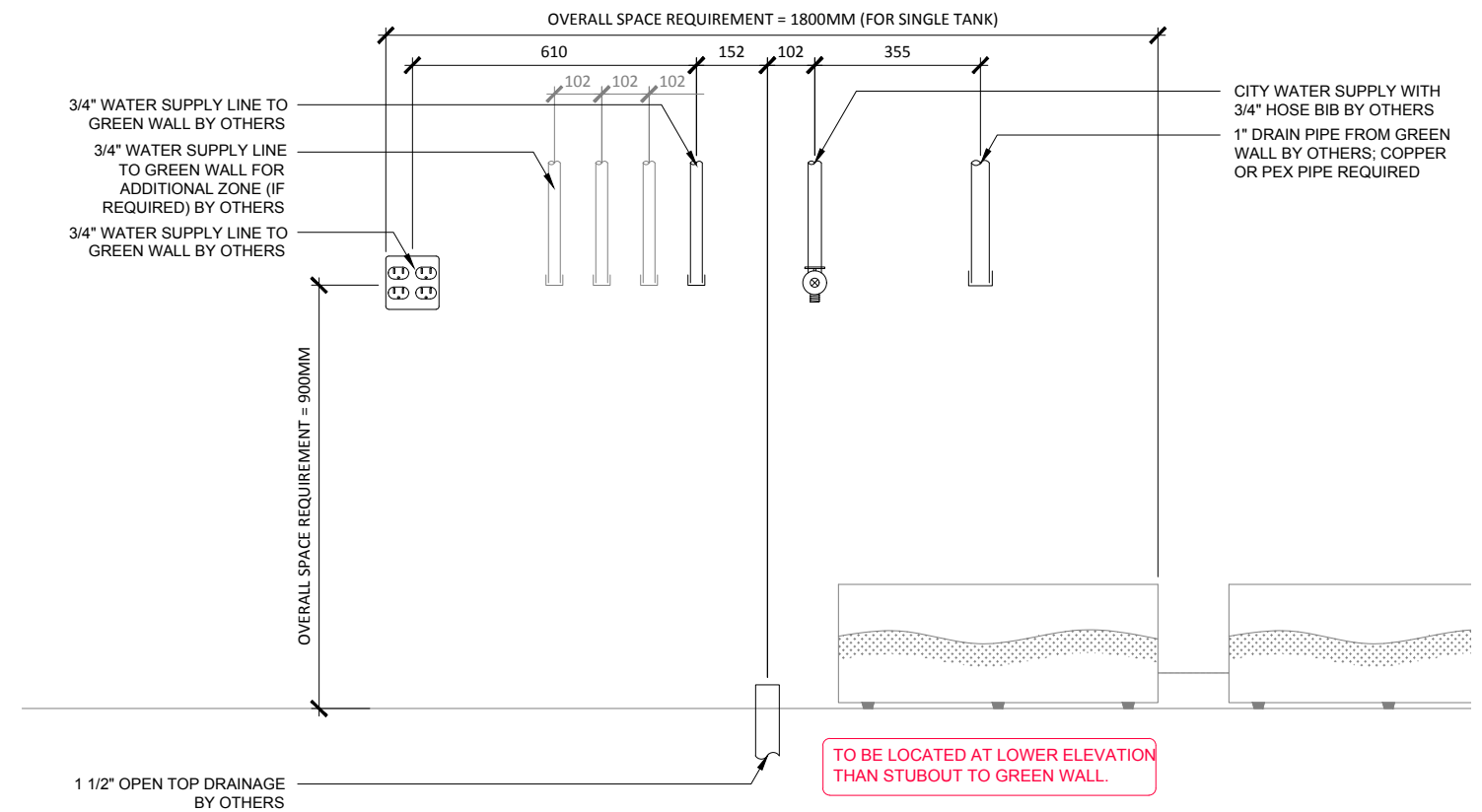
< 2400	OK			
< 4000	OK	OK		
> 4000		OK	OK	OK

**MAINT. ACCESS**  
Walls over 40' / 12m need additional considerations. See GSKY maintenance manual.

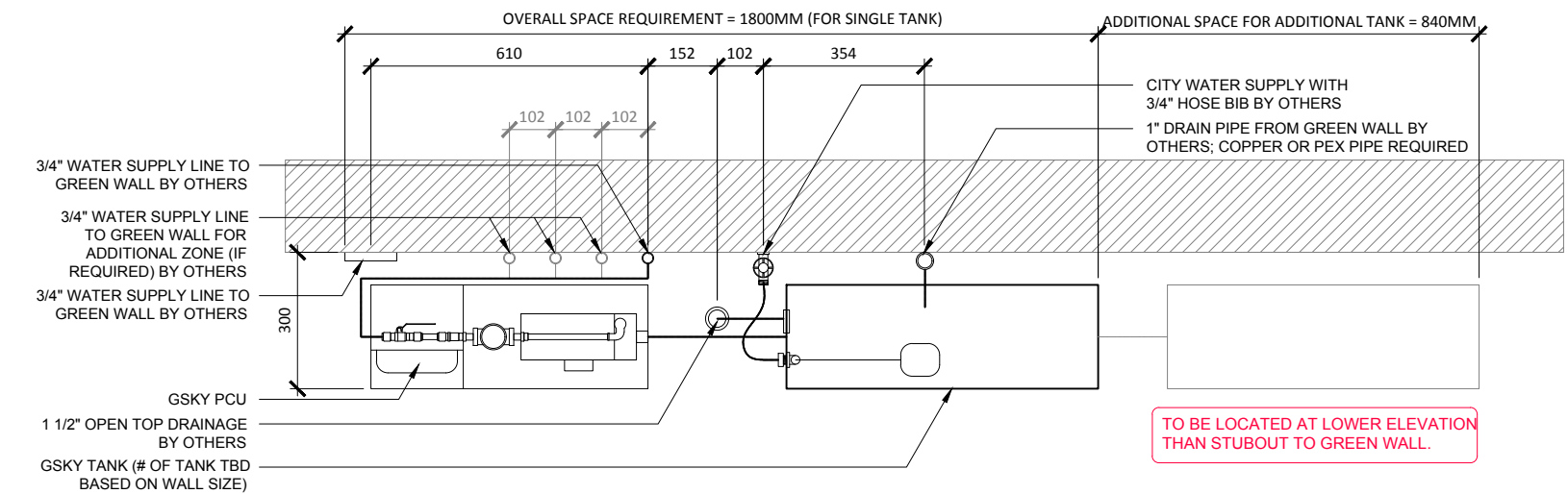
**GV2.0**



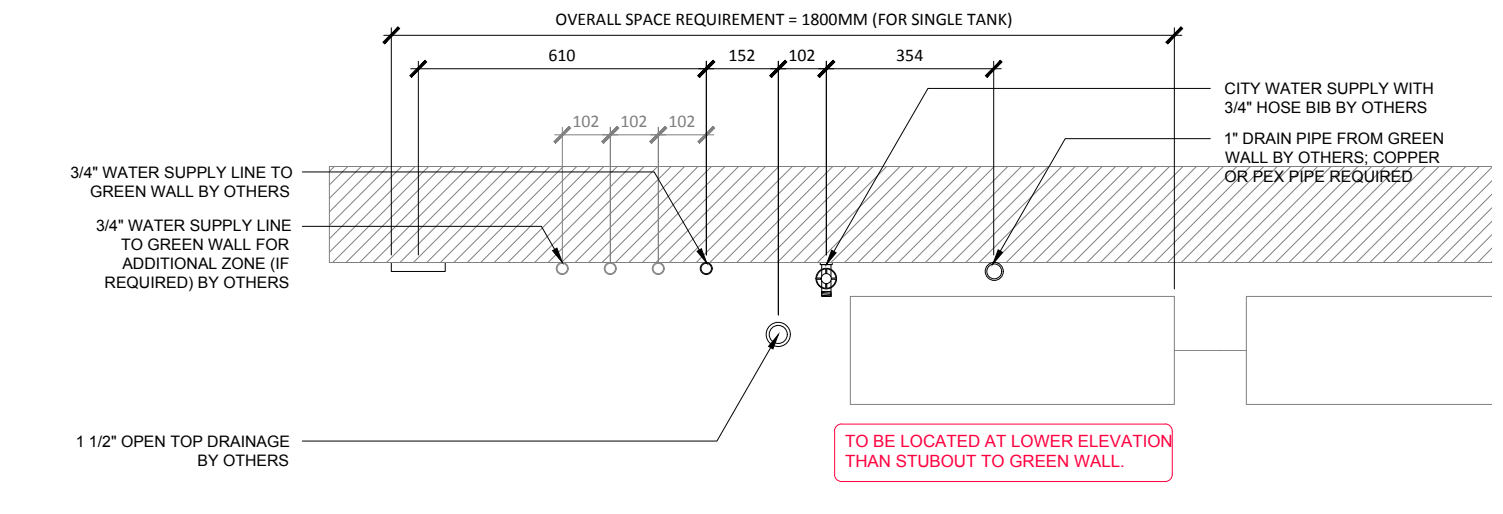
**1 IRRIGATION LAYOUT - ELEVATION**  
SCALE 1:16



**3 MECH. LAYOUT - ELEVATION**  
SCALE 1:16



**2 IRRIGATION LAYOUT - PLAN**  
SCALE 1:16



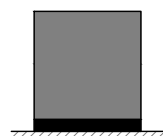
**4 MECH. LAYOUT - PLAN**  
SCALE 1:16



**VERSA WALL®**

**VTT-72 IRRIGATION SYSTEM**

VER. 1.1 297x420 mm (A3)

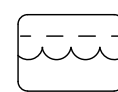


**TO FLOOR**  
Weight is 10lbs/ft² 50kg/m²

51 mm	SIDE/TOP
216mm	BOTTOM

**TRIM**

NOTE: pipes and edges of trays will be exposed unless recessed or covered



**REMOTE TANKS**

For 50 ft² / 5 m² to any size  
Min width 11 1/4" / 29cm

SERVICE			
MANUAL	N/A	N/A	N/A
AUTOMATED	At Wall	At Wall	At Wall

**IRRIGATION**

It is recommended to install a drain whenever possible. Require GSKY's consultation for > 35' / 10.5 m height wall.



**LIGHTING**

LED or Metal Halide Lights recommended

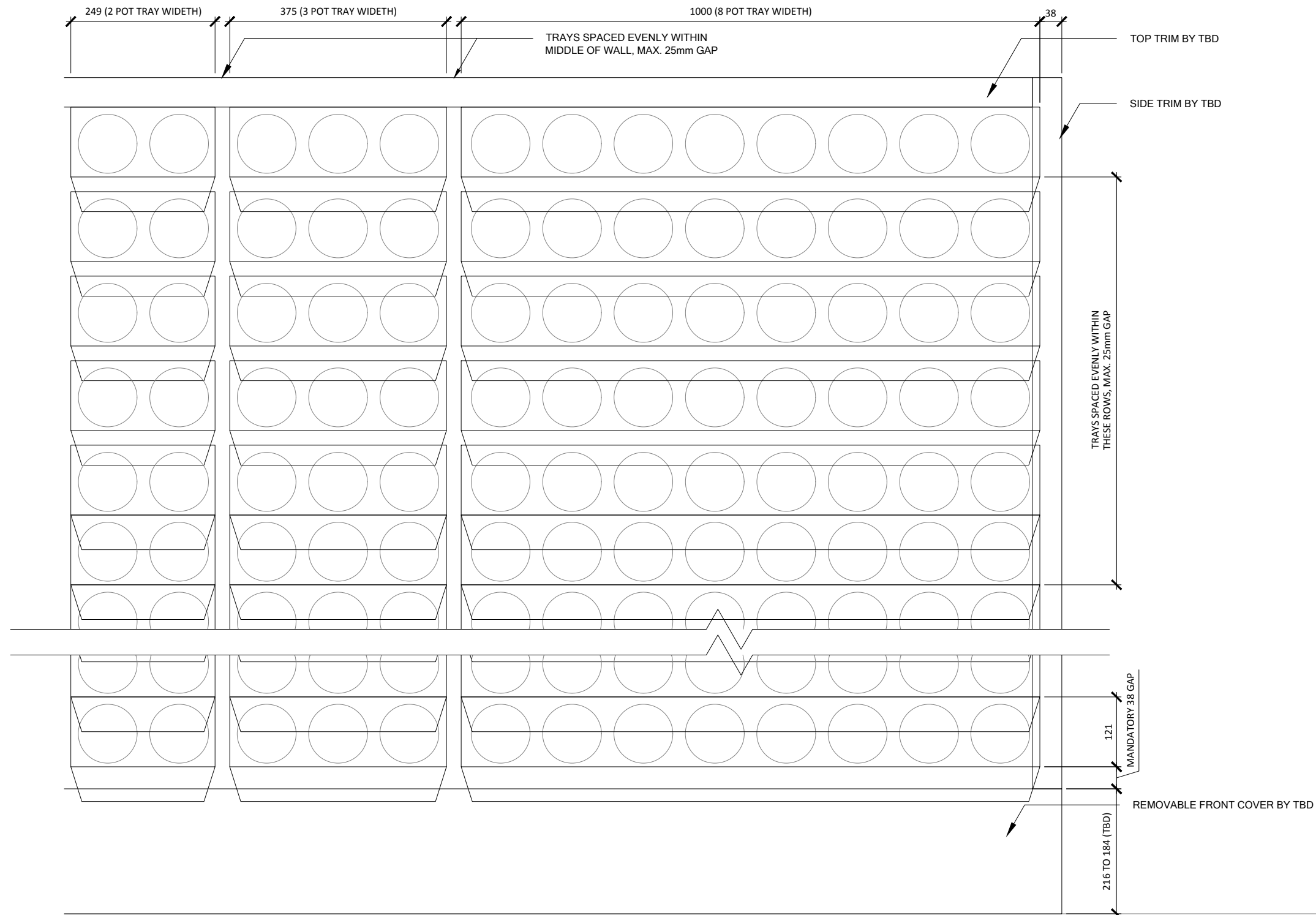
Duration	10-12 hrs/day
Color Temp	4000-4500K
Intensity	150fc / 1500 lux (Even Flood)

< 2400	OK			
< 4000	OK	OK		
> 4000		OK	OK	OK

**MAINT. ACCESS**

Walls over 40' / 12m need additional considerations. See GSKY maintenance manual.

**GV2.1**



**1** TRAY LAYOUT  
SCALE: 1:8

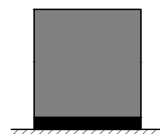


**VERSA WALL**®

VTT-72 TRAY LAYOUT

VER. 1.1

297x420 mm (A3)



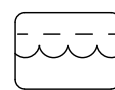
**TO FLOOR**

Weight is 10lbs/ft² 50kg/m²

51 mm	SIDE/TOP
216mm	BOTTOM

**TRIM**

NOTE: pipes and edges of trays will be exposed unless recessed or covered



**REMOTE TANKS**

For 50 ft² / 5 m² to any size  
Min width 11 1/4" / 29cm

SERVICE			
MANUAL	N/A	N/A	N/A
AUTOMATED	At Wall	At Wall	At Wall

**IRRIGATION**

It is recommended to install a drain whenever possible. Require GSKy's consultation for > 35' / 10.5 m height wall.



**LIGHTING**

LED or Metal Halide Lights recommended

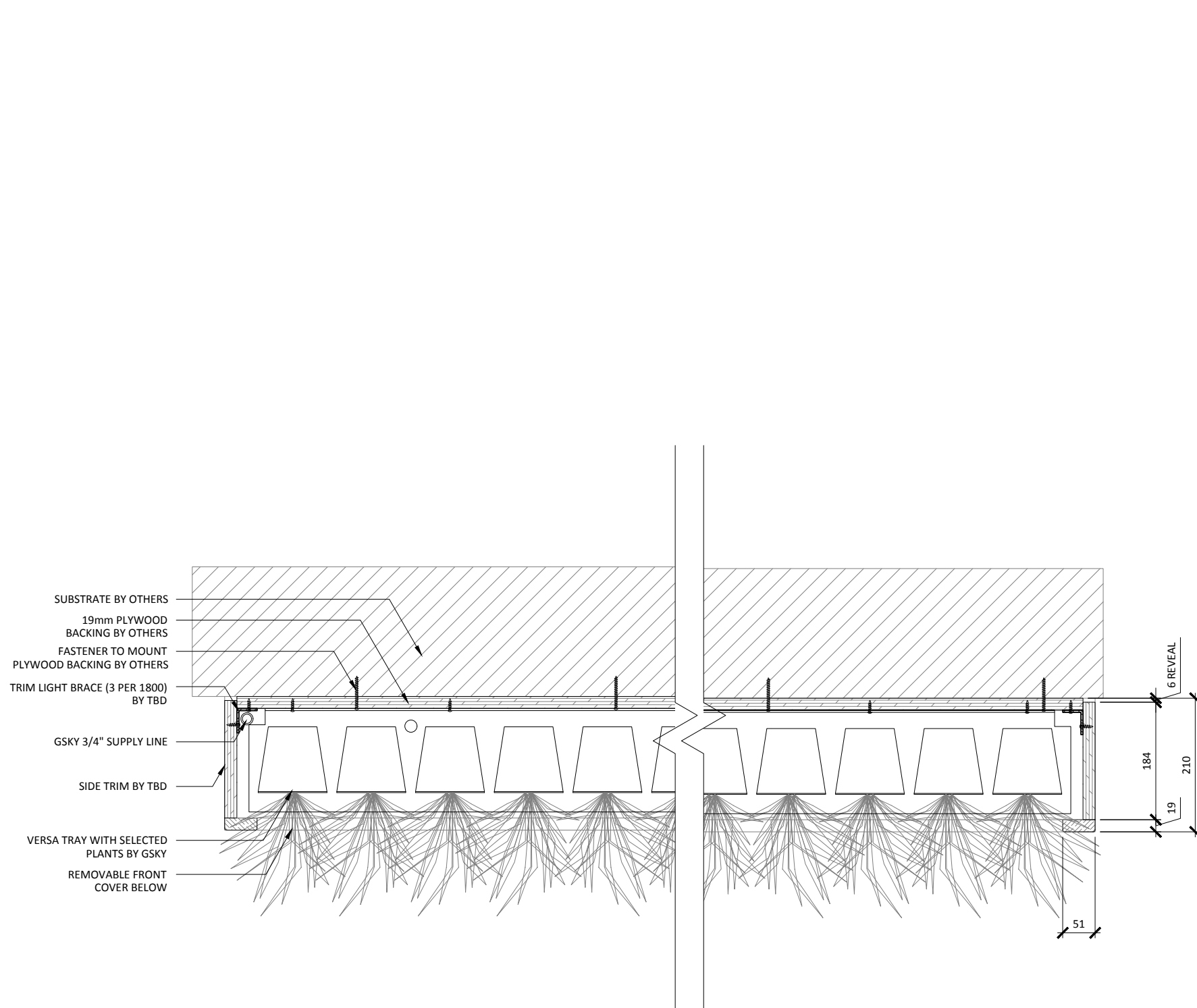
Duration	10-12 hrs/day
Color Temp	4000-4500K
Intensity	150fc / 1500 lux (Even Flood)



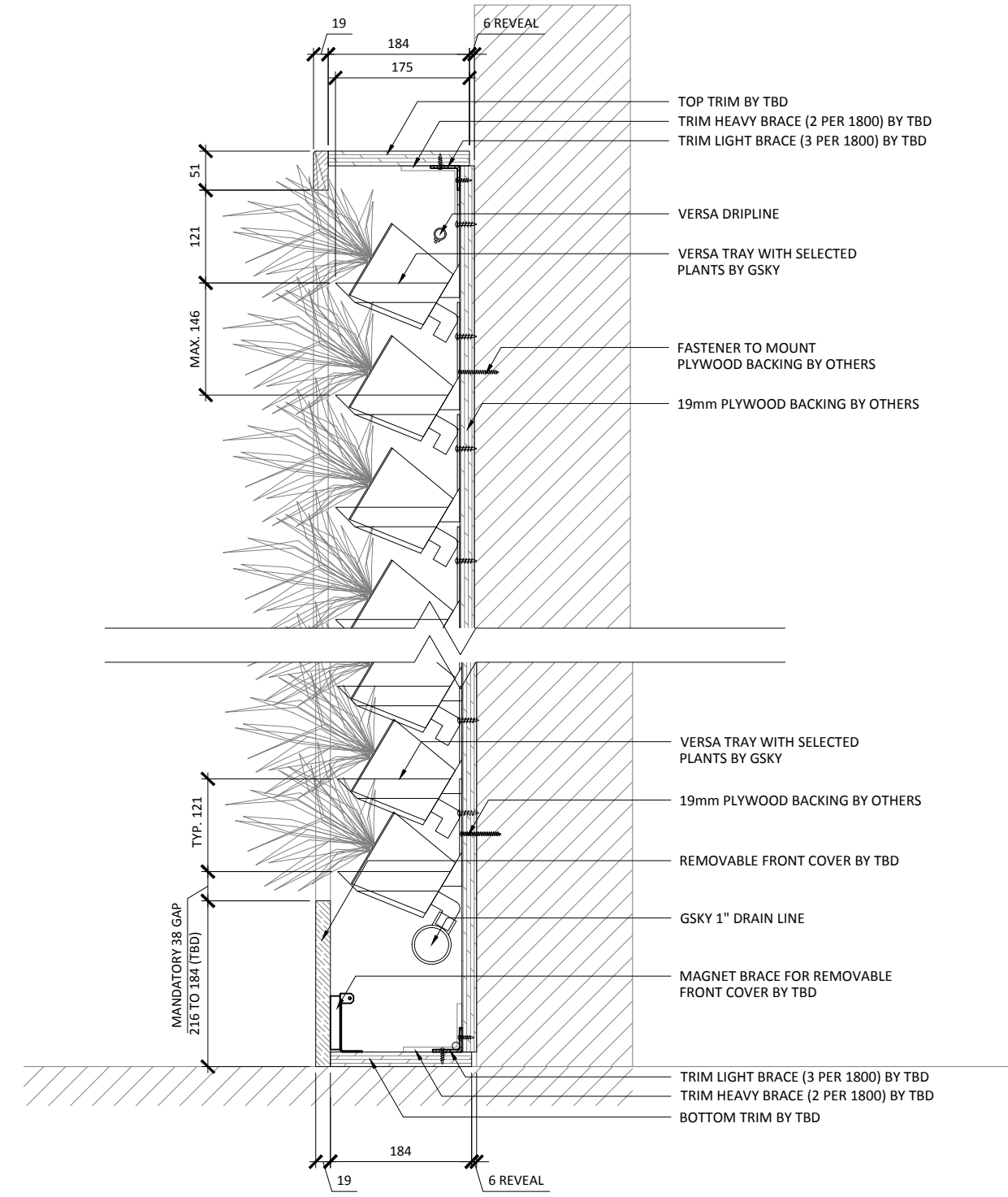
**MAINT. ACCESS**

Walls over 40' / 12m need additional considerations. See GSKy maintenance manual.

**GV3.0**



**1 PLAN DETAIL**  
SCALE: 1:8



**2 SECTION DETAIL**  
SCALE: 1:8

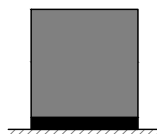


# VERSA WALL®

## VTT-72 DETAILS

VER. 1.1

297x420 mm (A3)



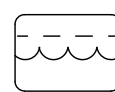
**TO FLOOR**

Weight is 10lbs/ft² 50kg/m²

51 mm	SIDE/TOP
216mm	BOTTOM

**TRIM**

NOTE: pipes and edges of trays will be exposed unless recessed or covered



**REMOTE TANKS**

For 50 ft² / 5 m² to any size  
Min width 11 1/4" / 29cm

SERVICE			
MANUAL	N/A	N/A	N/A
AUTOMATED	At Wall	At Wall	At Wall

**IRRIGATION**

It is recommended to install a drain whenever possible. Require GSKy's consultation for > 35' / 10.5 m height wall.



**LIGHTING**

LED or Metal Halide Lights recommended

Duration	10-12 hrs/day
Color Temp	4000-4500K
Intensity	150fc / 1500 lux (Even Flood)

< 2400	OK			
< 4000	OK	OK		
> 4000		OK	OK	OK

**MAINT. ACCESS**

Walls over 40' / 12m need additional considerations. See GSKy maintenance manual.

**GV3.1**