

— VERSA TRAYS

— VERSA DRIPLINE

— BOTTOM TRIM BY TBD

— MAGNET BRACE FOR REMOVABLE FRONT COVER BY TBD

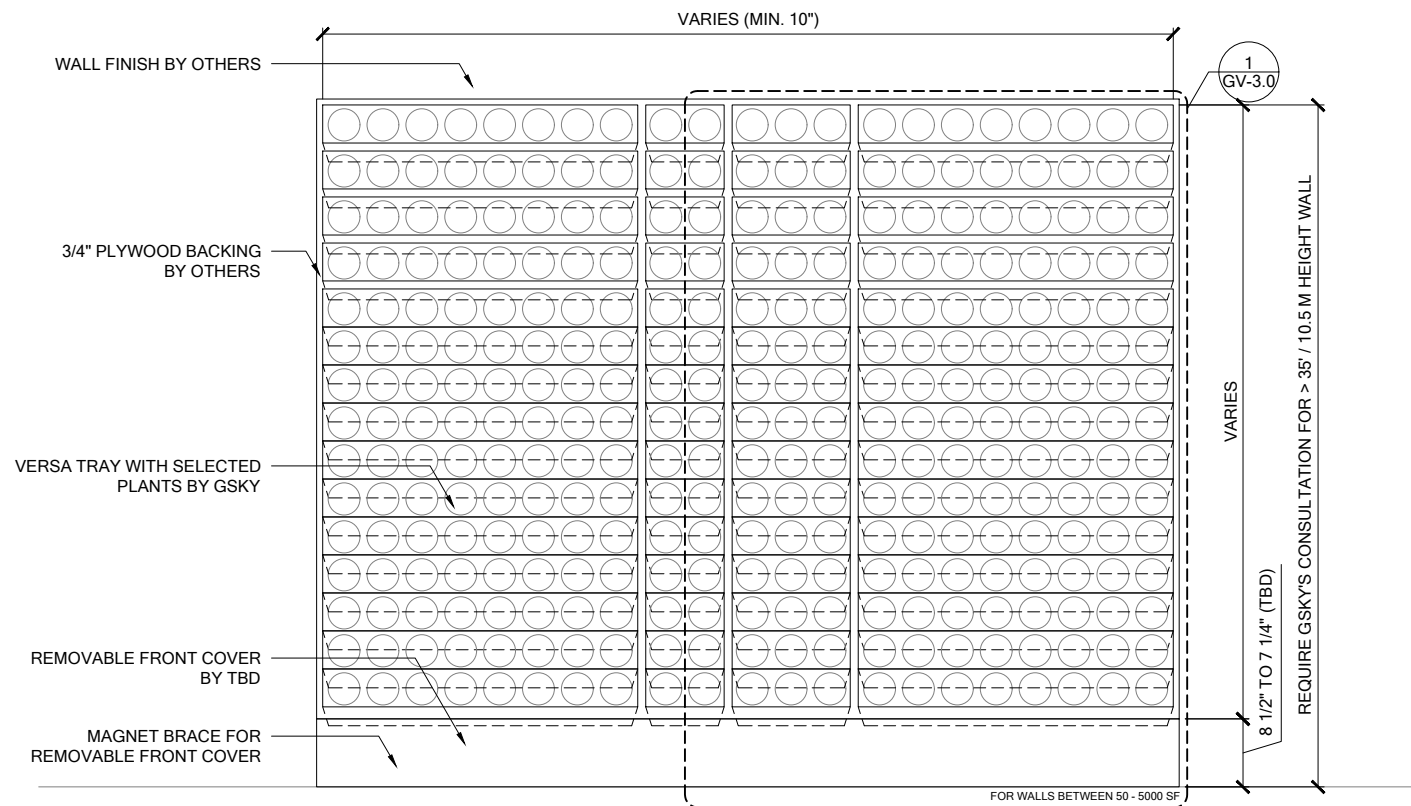
— REMOVABLE FRONT COVER BY TBD

— GSKY NUTRIENT INJECTOR

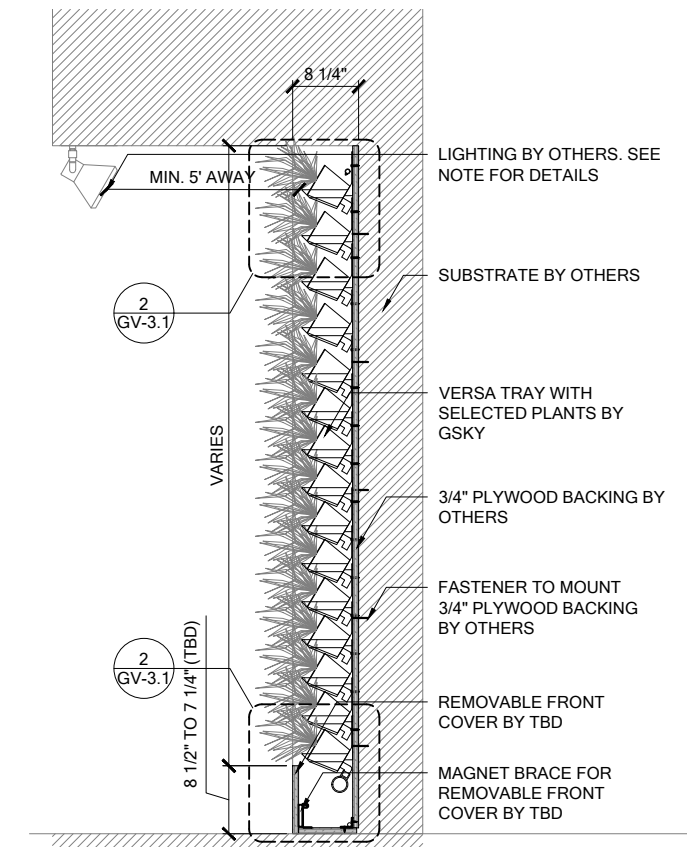


**VERSA WALL**®

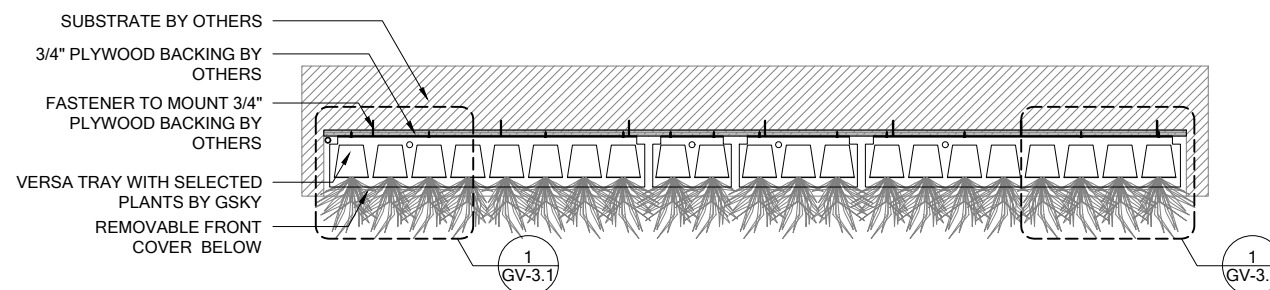
TO THE FLOOR / ICU BELOW WALL  
VTI-7N



**1 ELEVATION**  
SCALE 1/2" = 1'-0"



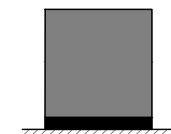
**3 SECTION**  
SCALE 1/2" = 1'-0"



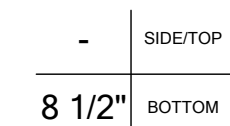
**2 PLAN**  
SCALE 1/2" = 1'-0"



**VERSA WALL**<sup>®</sup>  
VTI-7N GENERAL OVERVIEW  
VER. 1.1      11x17" (A3)



**TO FLOOR**  
Weight is 10lbs/ft<sup>2</sup> / 50kg/m<sup>2</sup>



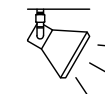
**TRIM**  
NOTE: pipes and edges of trays will be exposed unless recessed or covered



**ICU BELOW WALL**  
For 50 ft<sup>2</sup> / 5 m<sup>2</sup> to 5000 ft<sup>2</sup> / 500 m<sup>2</sup>  
Min width 50 3/4" / 129cm

SERVICE			
MANUAL	N/A	N/A	N/A
AUTOMATED	At Wall	At Wall	At Wall

**IRRIGATION**  
It is recommended to install a drain whenever possible. Require GSKy's consultation for > 35' / 10.5 m height wall.



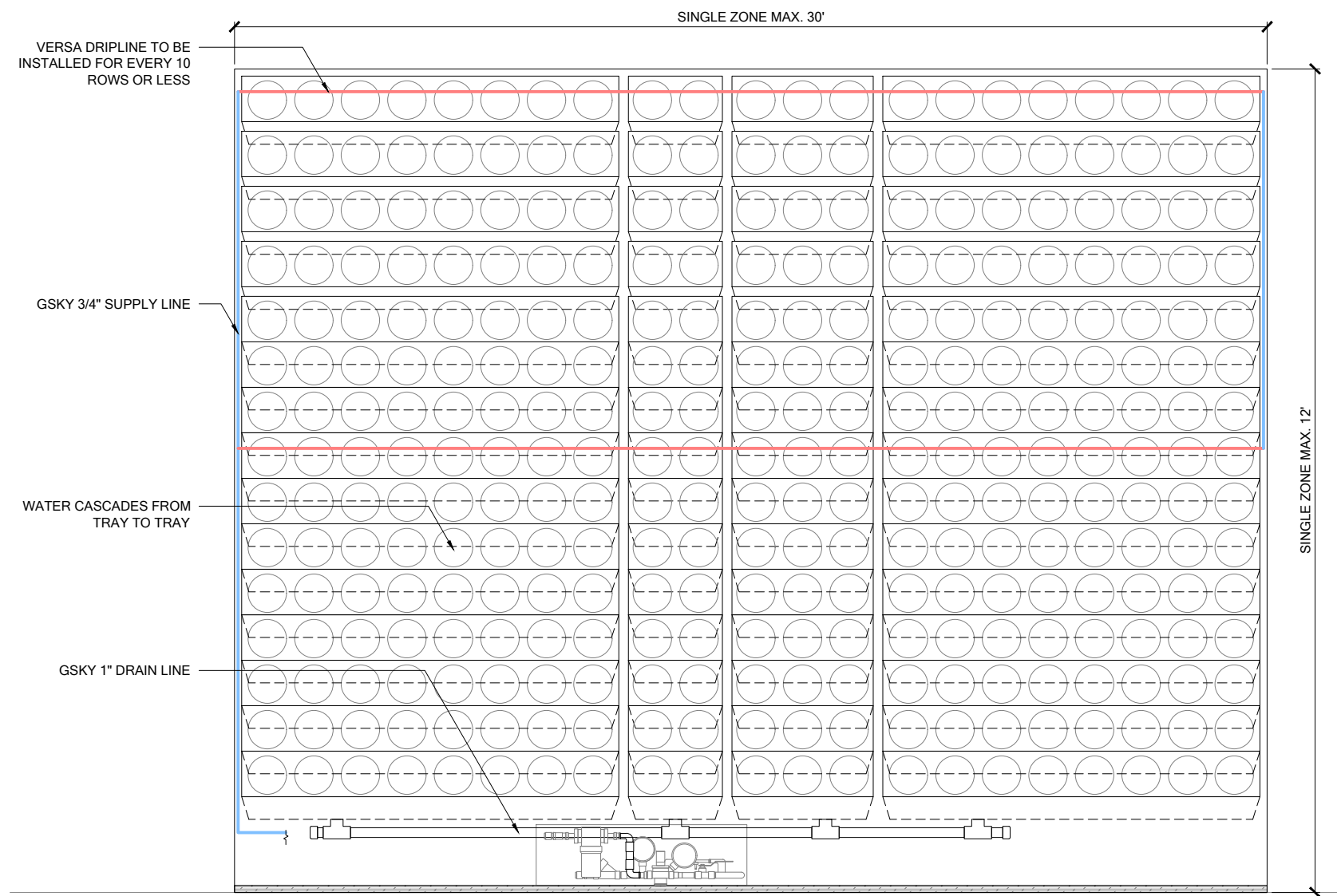
**LIGHTING**  
LED or Metal Halide Lights recommended

Duration	10-12 hrs/day
Color Temp	4000-4500K
Intensity	150fc / 1500 lux (Even Flood)

< 8'	OK		
< 13'	OK	OK	
> 13'		OK	OK

**MAINT. ACCESS**  
Walls over 40' / 12m need additional considerations. See GSKy maintenance manual.

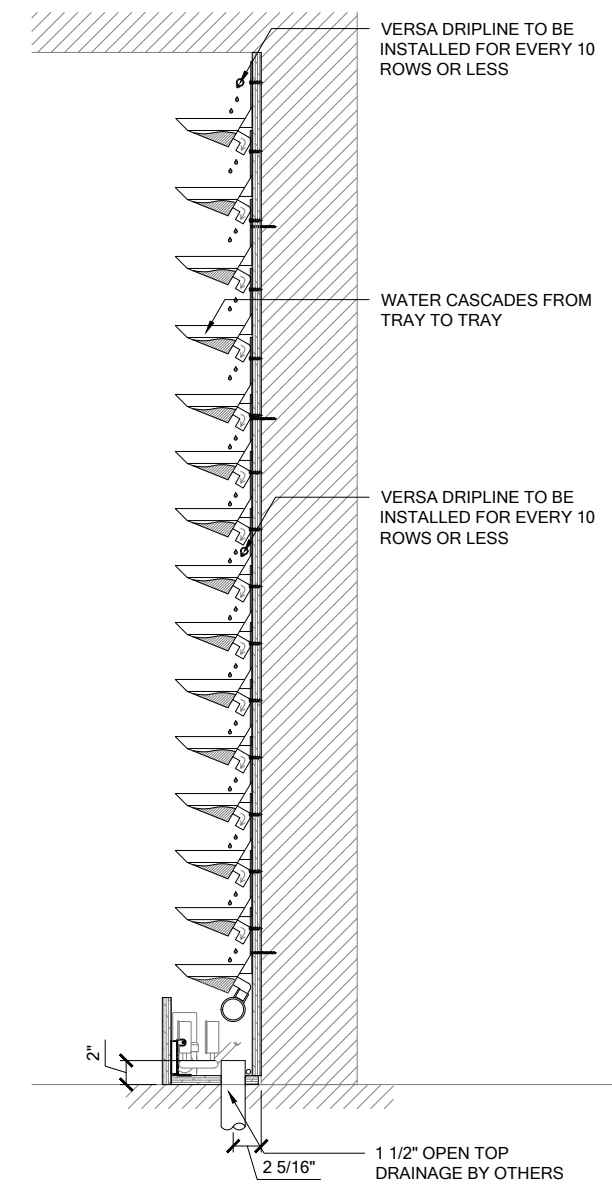
**GV1.0**



WARNING! LOCATION OF STUBOUT FOR WATER SUPPLY IS CRITICAL AS IT DETERMINES THE LOCATION OF THE WALL.

WARNING! LOCATION OF STUBOUT FOR DRAIN IS CRITICAL AS IT DETERMINES THE LOCATION OF THE WALL.

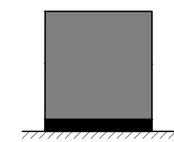
**1 ELEVATION**  
SCALE 3/4" = 1'-0"



**2 SECTION**  
SCALE 3/4" = 1'-0"



**VERSA WALL**<sup>®</sup>  
VTI-7N IRRIGATION OVERVIEW  
VER. 1.1      11x17" (A3)



**TO FLOOR**  
Weight is 10lbs/ft<sup>2</sup> / 50kg/m<sup>2</sup>



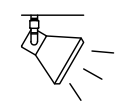
**TRIM**  
NOTE: pipes and edges of trays will be exposed unless recessed or covered



**ICU BELOW WALL**  
For 50 ft<sup>2</sup> / 5 m<sup>2</sup> to 5000 ft<sup>2</sup> / 500 m<sup>2</sup>  
Min width 50 3/4" / 129cm

SERVICE			
MANUAL	N/A	N/A	N/A
AUTOMATED	At Wall	At Wall	At Wall

**IRRIGATION**  
It is recommended to install a drain whenever possible. Require GSKy's consultation for > 35' / 10.5 m height wall.



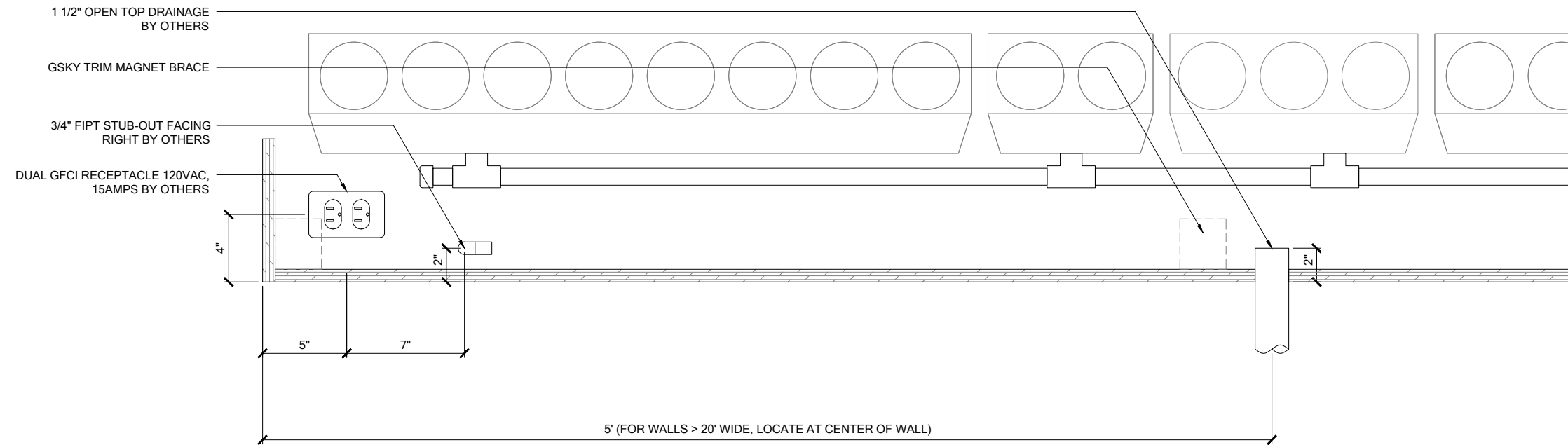
**LIGHTING**  
LED or Metal Halide Lights recommended

Duration	10-12 hrs/day
Color Temp	4000-4500K
Intensity	150fc / 1500 lux (Even Flood)

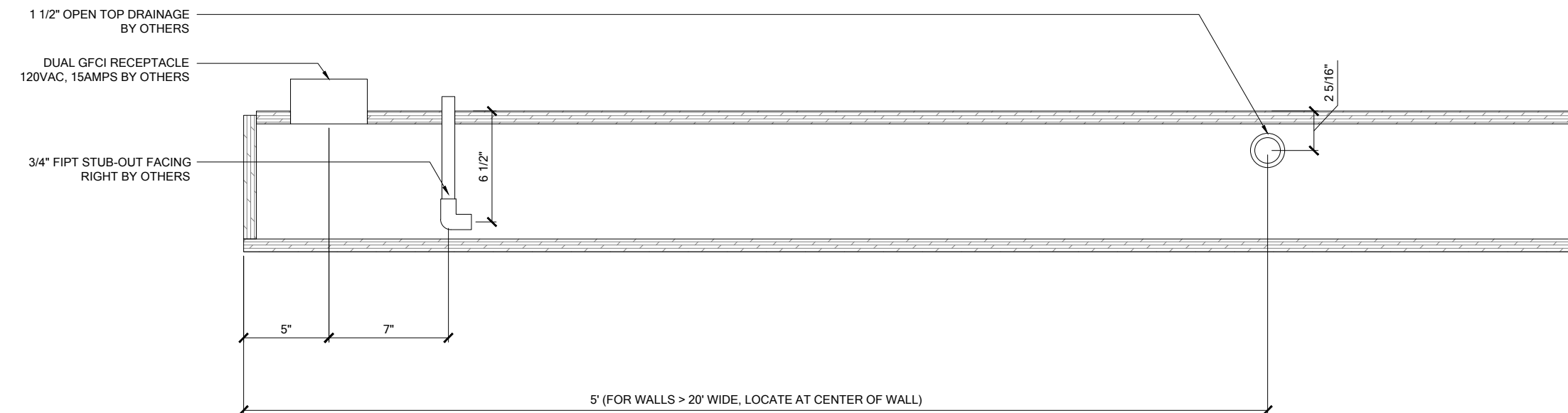
< 8'	OK		
< 13'	OK	OK	
> 13'		OK	OK

**MAINT. ACCESS**  
Walls over 40' / 12m need additional considerations. See GSKy maintenance manual.

**GV2.0**



**1 ELEVATION**  
SCALE 1 1/2" = 1'-0"



**2 PLAN**  
SCALE 1 1/2" = 1'-0"

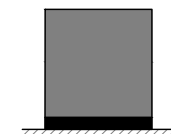


**VERSA WALL**®

VTI-7N MECH. LAYOUT

VER. 1.1

11x17" (A3)



**TO FLOOR**

Weight is 10lbs/ft² 50kg/m²



**TRIM**

NOTE: pipes and edges of trays will be exposed unless recessed or covered



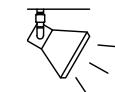
**ICU BELOW WALL**

For 50 ft² / 5 m² to 5000 ft² / 500 m²  
Min width 50 3/4" / 129cm

SERVICE			
MANUAL	N/A	N/A	N/A
AUTOMATED	At Wall	At Wall	At Wall

**IRRIGATION**

It is recommended to install a drain whenever possible. Require GSky's consultation for > 35' / 10.5 m height wall.



**LIGHTING**

LED or Metal Halide Lights recommended

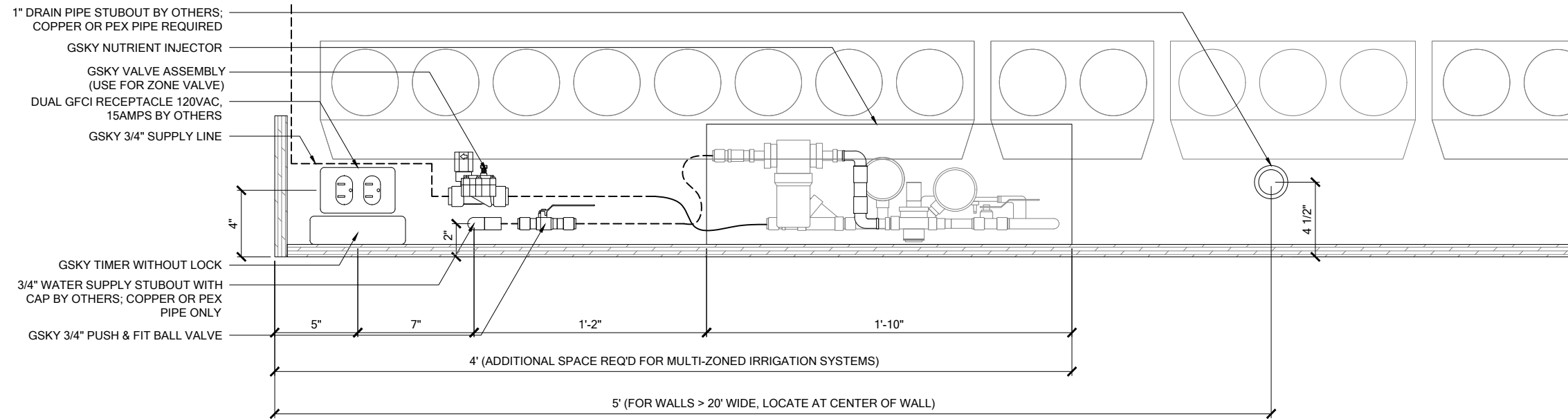
Duration  
10-12 hrs/day  
Color Temp  
4000-4500K  
Intensity  
150fc / 1500 lux  
(Even Flood)

< 8'	OK			
< 13'	OK	OK		
> 13'		OK	OK	OK

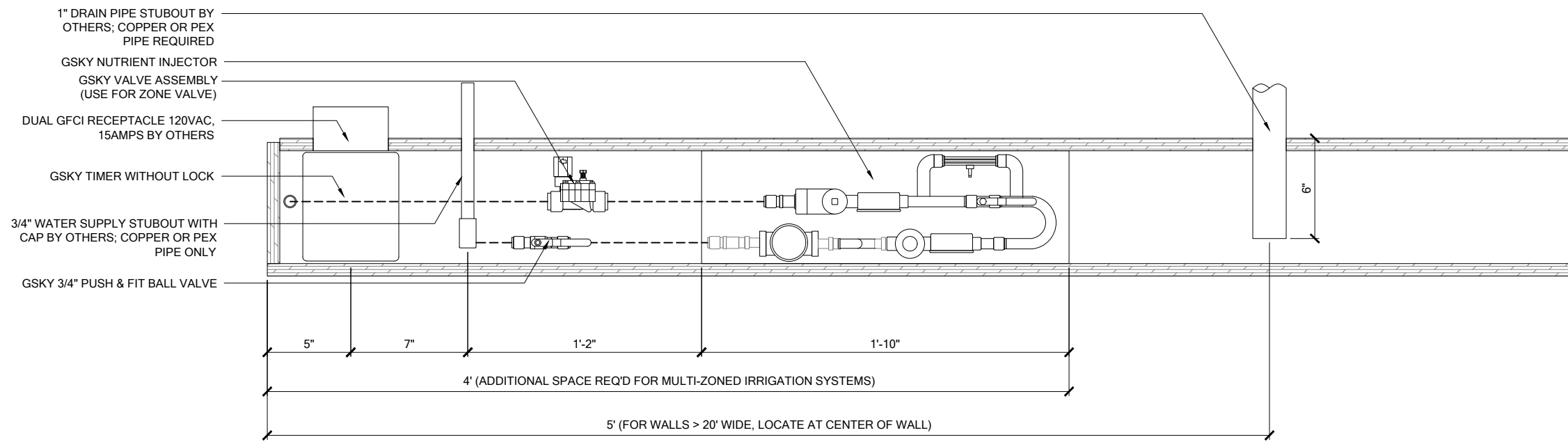
**MAINT. ACCESS**

Walls over 40' / 12m need additional considerations. See GSky maintenance manual.

**GV2.1**



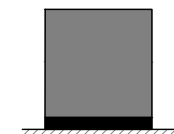
**1 ELEVATION**  
SCALE 1 1/2" = 1'-0"



**2 PLAN**  
SCALE 1 1/2" = 1'-0"



**VERSA WALL**<sup>®</sup>  
VTI-7N IRRIGATION LAYOUT  
VER. 1.1      11x17" (A3)



**TO FLOOR**  
Weight is 10lbs/ft<sup>2</sup> 50kg/m<sup>2</sup>

-	SIDE/TOP
8 1/2"	BOTTOM

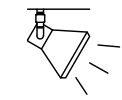
**TRIM**  
NOTE: pipes and edges of trays will be exposed unless recessed or covered



**ICU BELOW WALL**  
For 50 ft<sup>2</sup> / 5 m<sup>2</sup> to 5000 ft<sup>2</sup> / 500 m<sup>2</sup>  
Min width 50 3/4" / 129cm

SERVICE			
MANUAL	N/A	N/A	N/A
AUTOMATED	At Wall	At Wall	At Wall

**IRRIGATION**  
It is recommended to install a drain whenever possible. Require GSKy's consultation for > 35' / 10.5 m height wall.



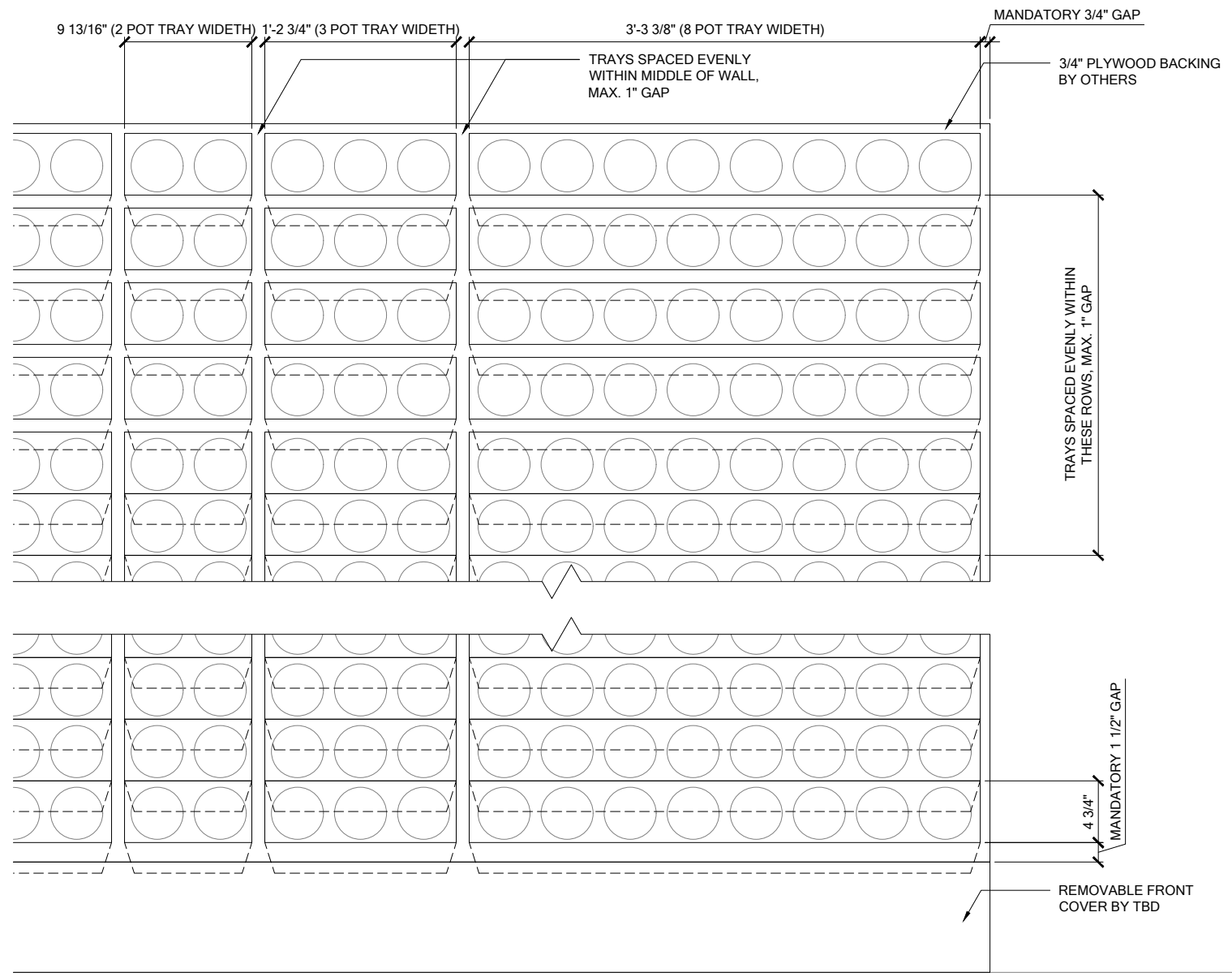
**LIGHTING**  
LED or Metal Halide Lights recommended

Duration	10-12 hrs/day
Color Temp	4000-4500K
Intensity	150fc / 1500 lux (Even Flood)

< 8'	OK		
< 13'	OK	OK	
> 13'		OK	OK

**MAINT. ACCESS**  
Walls over 40' / 12m need additional considerations. See GSKy maintenance manual.

**GV2.2**



**1 TRAY LAYOUT**  
SCALE 1" = 1'-0"



**VERSA WALL**<sup>®</sup>  
VTI-7N TRAY LAYOUT  
VER. 1.1      11x17" (A3)

**TO FLOOR**  
Weight is 10lbs/ft<sup>2</sup> 50kg/m<sup>2</sup>

**TRIM**  
8 1/2"  
SIDE/TOP  
BOTTOM  
NOTE: pipes and edges of trays will be exposed unless recessed or covered

**ICU BELOW WALL**  
For 50 ft<sup>2</sup> / 5 m<sup>2</sup> to 5000 ft<sup>2</sup> / 500 m<sup>2</sup>  
Min width 50 3/4" / 129cm

SERVICE			
MANUAL	N/A	N/A	N/A
AUTOMATED	At Wall	At Wall	At Wall

**IRRIGATION**  
It is recommended to install a drain whenever possible. Require GSKy's consultation for > 35' / 10.5 m height wall.

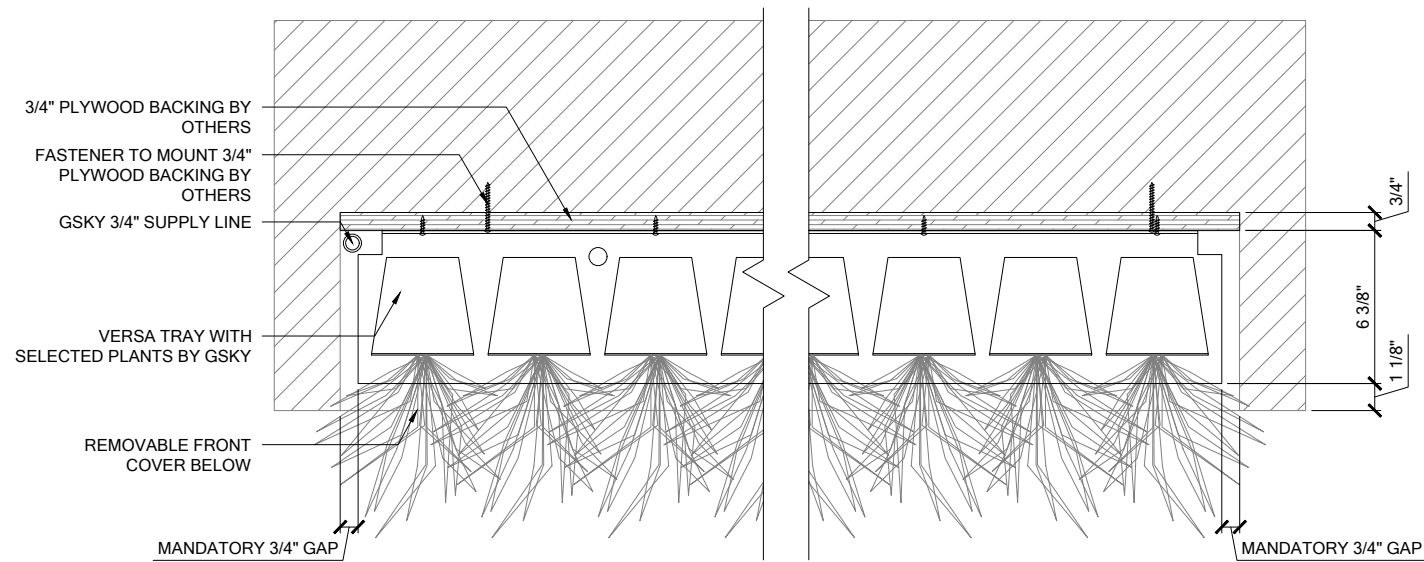
**LIGHTING**  
LED or Metal Halide Lights recommended

Duration  
10-12 hrs/day  
Color Temp  
4000-4500K  
Intensity  
150fc / 1500 lux (Even Flood)

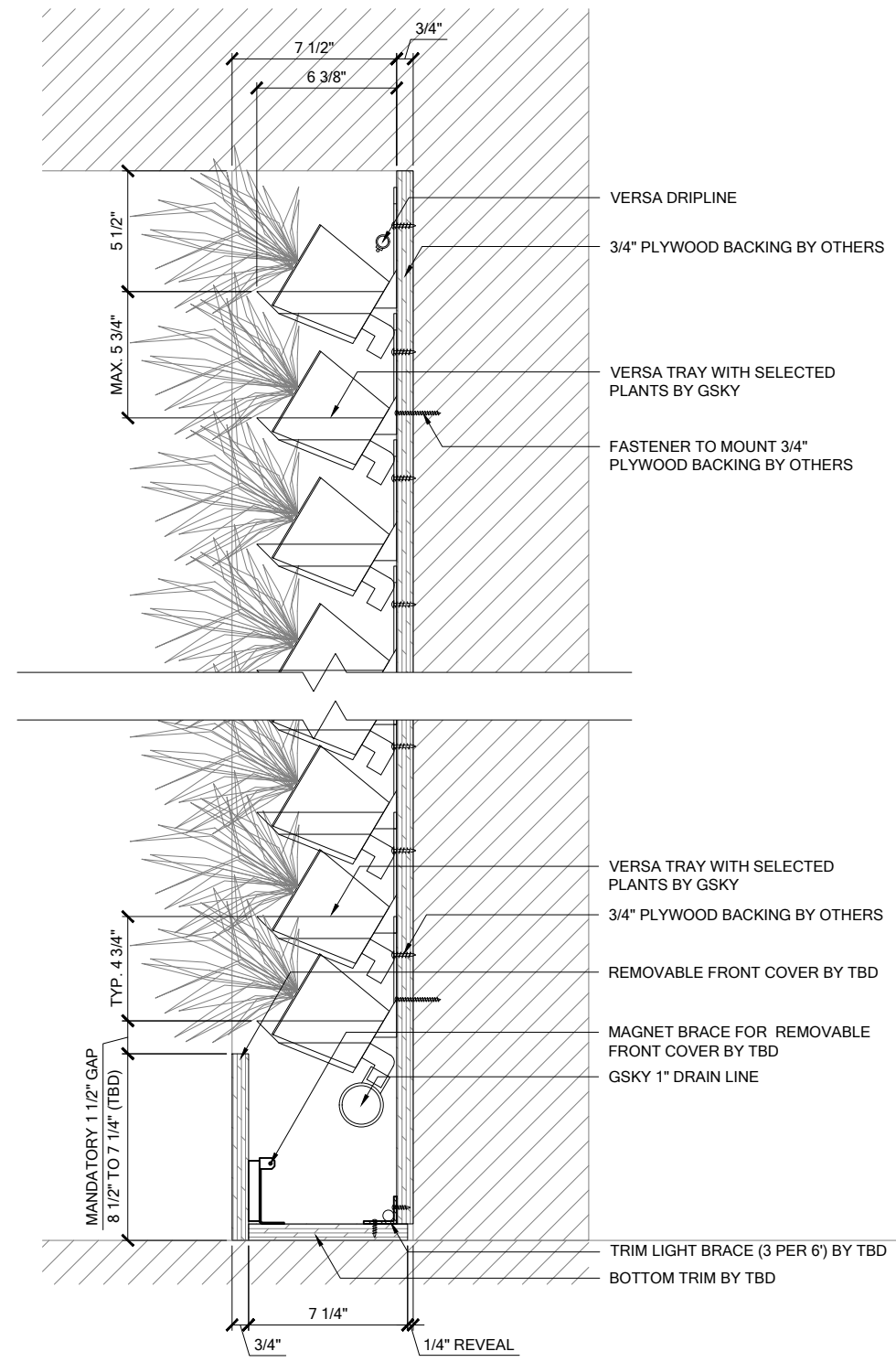
**MAINT. ACCESS**  
Walls over 40' / 12m need additional considerations. See GSKy maintenance manual.

< 8'	OK			
< 13'	OK	OK		
> 13'		OK	OK	OK

**GV3.0**



**1 PLAN**  
 SCALE 1 1/2" = 1'-0"



**2 SECTION**  
 SCALE 1 1/2" = 1'-0"

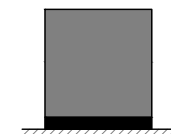


**VERSA WALL**®

VTI-7N DETAILS

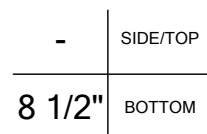
VER. 1.1

11x17" (A3)



**TO FLOOR**

Weight is 10lbs/ft² 50kg/m²



**TRIM**

NOTE: pipes and edges of trays will be exposed unless recessed or covered



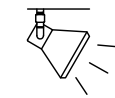
**ICU BELOW WALL**

For 50 ft² / 5 m² to 5000 ft² / 500 m²  
 Min width 50 5/8" / 129cm

SERVICE			
MANUAL	N/A	N/A	N/A
AUTOMATED	At Wall	At Wall	At Wall

**IRRIGATION**

It is recommended to install a drain whenever possible. Require GSKY's consultation for > 35' / 10.5 m height wall.



**LIGHTING**

LED or Metal Halide Lights recommended

Duration  
 10-12 hrs/day  
 Color Temp  
 4000-4500K  
 Intensity  
 150fc / 1500 lux  
 (Even Flood)

< 8'	OK			
< 13'	OK	OK		
> 13'		OK	OK	OK

**MAINT. ACCESS**

Walls over 40' / 12m need additional considerations. See GSKY maintenance manual.

**GV3.1**