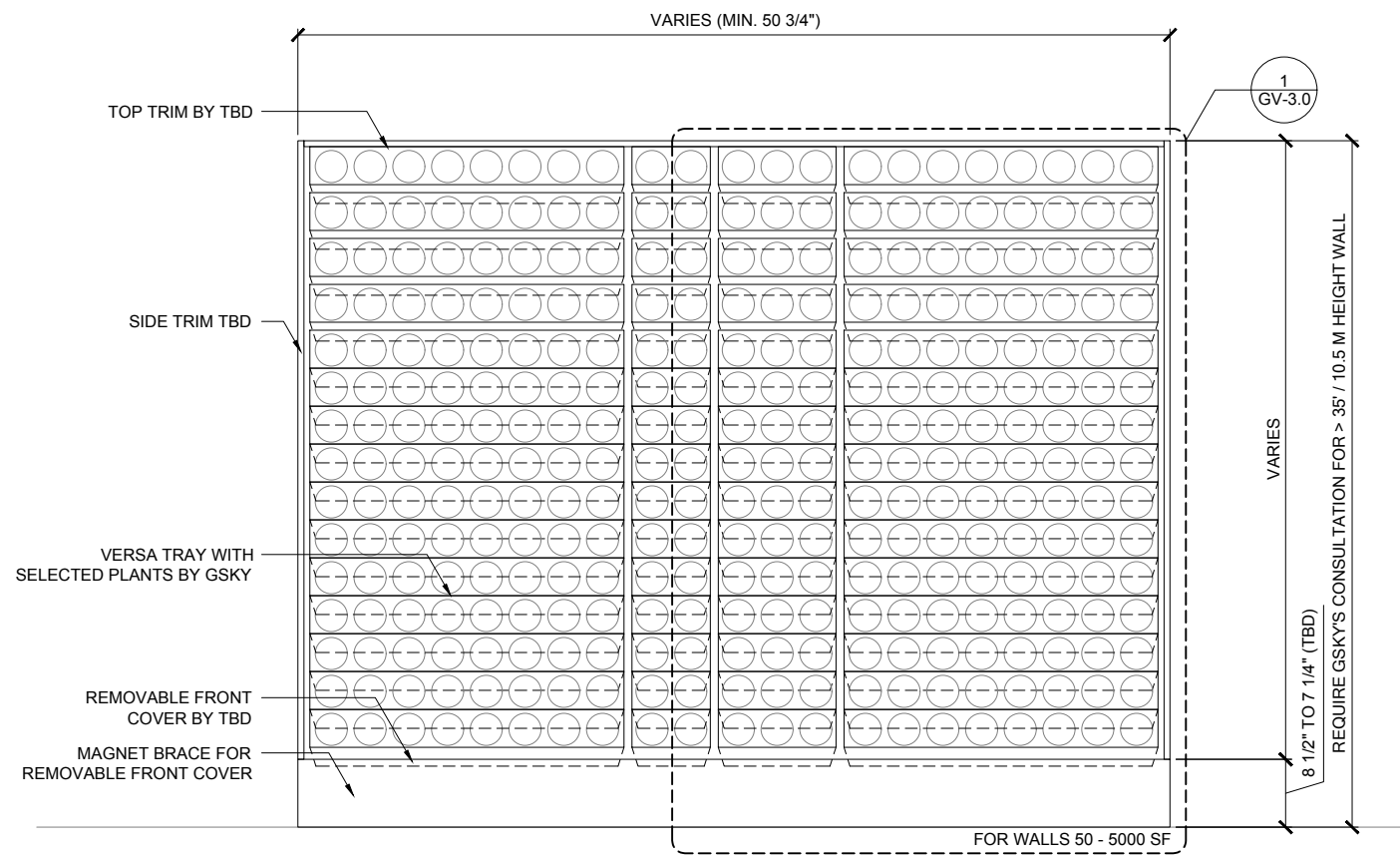
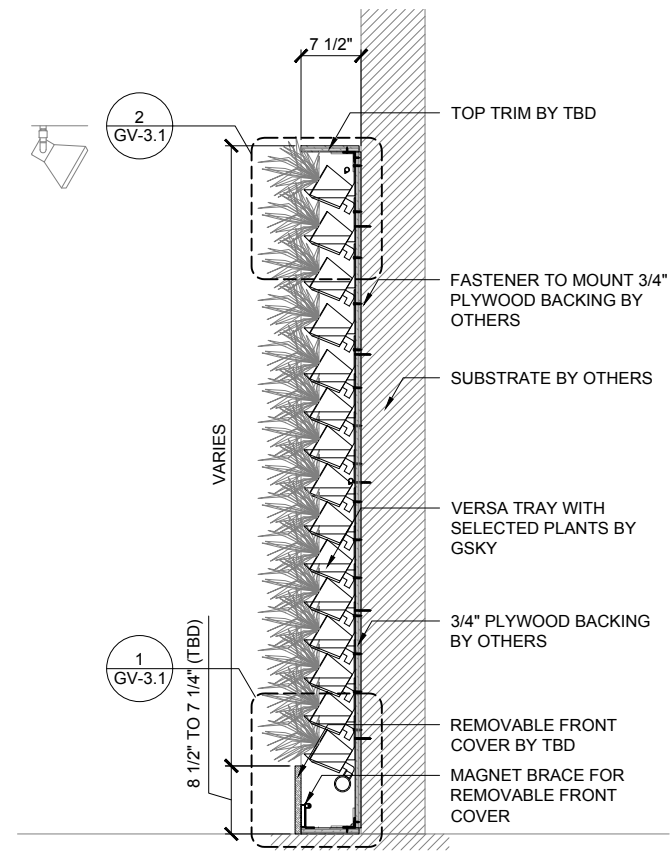


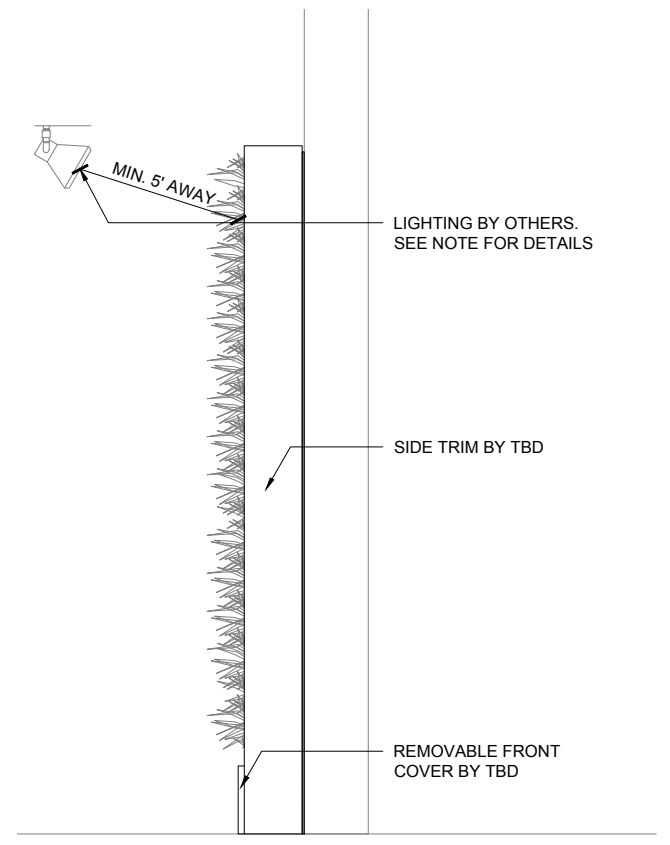
VERSA WALL[®]
 TO THE FLOOR / ICU BELOW WALL
 VTI-70



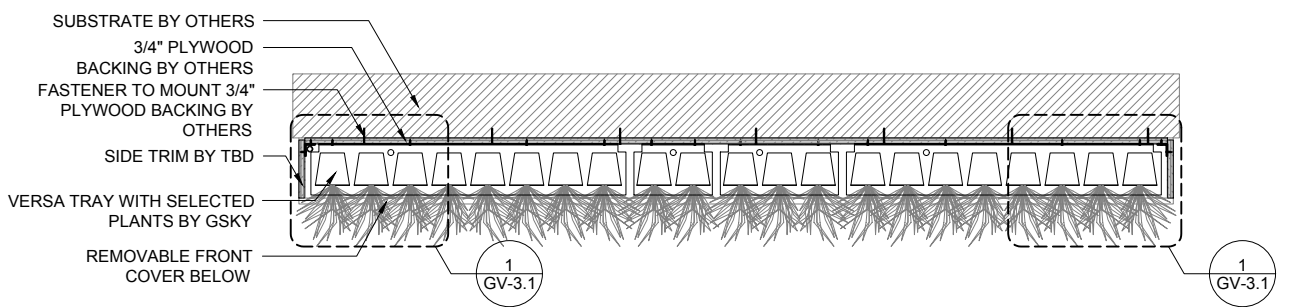
1 ELEVATION
SCALE 1/2" = 1'-0"



3 SECTION
SCALE 1/2" = 1'-0"



4 SIDE
SCALE 1/2" = 1'-0"



2 PLAN
SCALE 1/2" = 1'-0"



VERSA WALL[®]
VTI-70 GENERAL OVERVIEW
VER. 1.1 11x17" (A3)

TO FLOOR
Weight is 10lbs/ft² 50kg/m²

3/4" SIDE/TOP
8 1/2" BOTTOM
TRIM
Pre-finished or unfinished
See gsky.com for details.

ICU BELOW WALL
For 50 ft² / 5 m² to 5000 ft² / 500 m²
Min width 50 3/4" / 129cm

SERVICE			
MANUAL	N/A	N/A	N/A
AUTOMATED	At Wall	At Wall	At Wall

IRRIGATION
It is recommended to install a drain whenever possible. Require Gsky's consultation for > 35' / 10.5 m height wall.

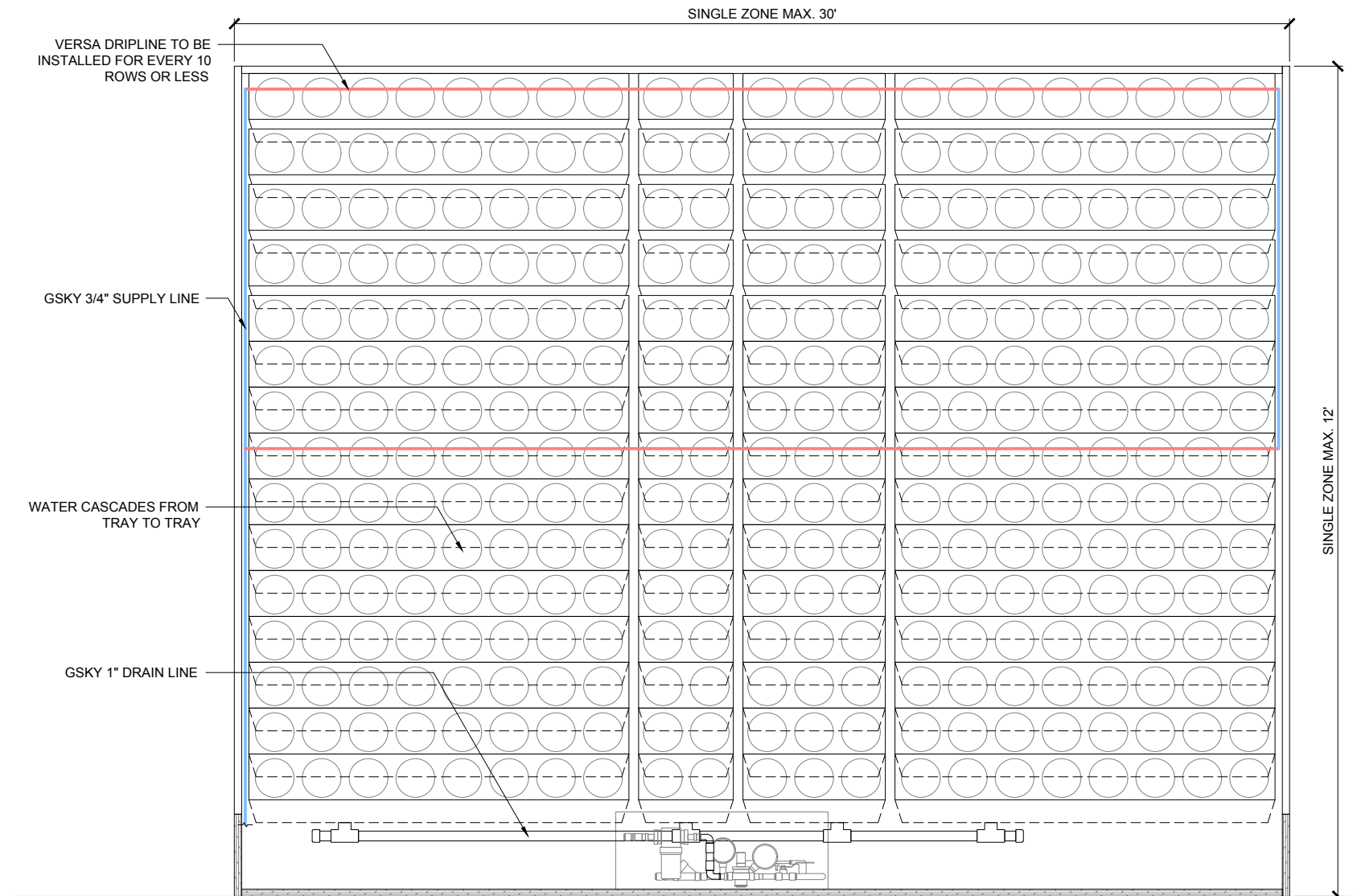
LIGHTING
LED or Metal Halide Lights recommended

Duration
10-12 hrs/day
Color Temp
4000-4500K
Intensity
150fc / 1500 lux (Even Flood)

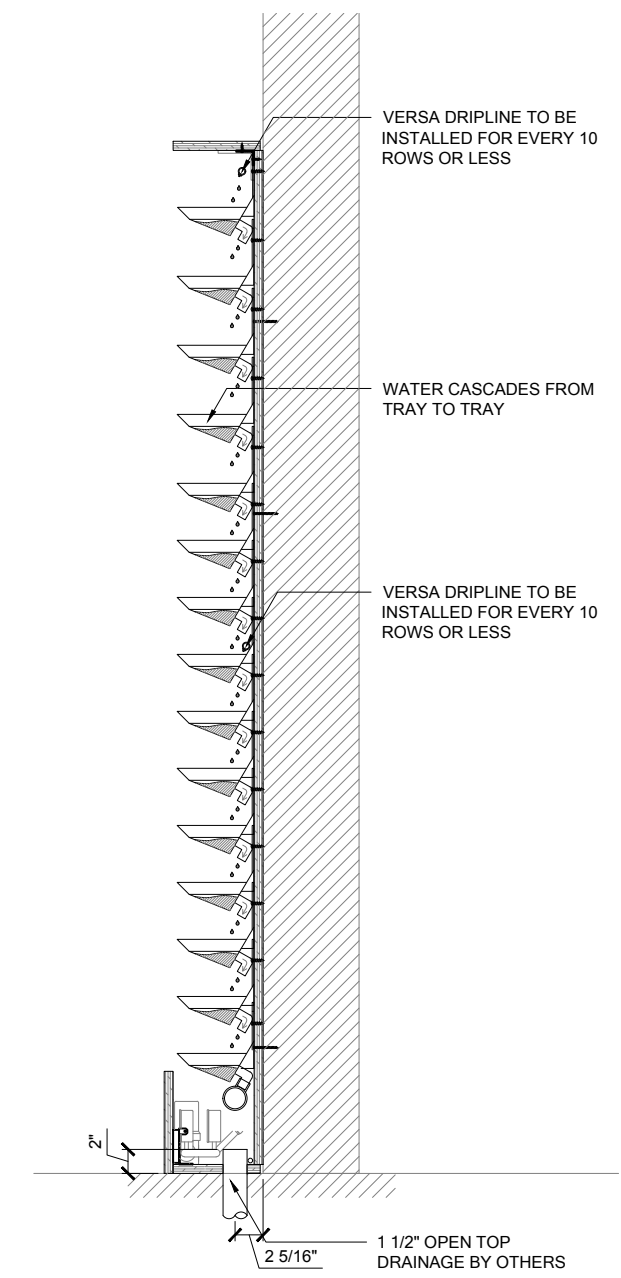
< 8'	OK		
< 13'	OK	OK	
> 13'		OK	OK

MAINT. ACCESS
Walls over 40' / 12m need additional considerations. See Gsky maintenance manual.

GV1.0



1 ELEVATION
SCALE 3/4" = 1'-0"



2 SECTION
SCALE 3/4" = 1'-0"



VERSA WALL[®]
VTI-70 IRRIGATION OVERVIEW
VER. 1.1 11x17" (A3)

TO FLOOR
Weight is 10lbs/ft² / 50kg/m²

3/4" SIDE/TOP
8 1/2" BOTTOM
TRIM
Pre-finished or unfinished
See gsky.com for details.

ICU BELOW WALL
For 50 ft² / 5 m² to 5000 ft² / 500 m²
Min width 50 3/4" / 129cm

SERVICE			
MANUAL	N/A	N/A	N/A
AUTOMATED	At Wall	At Wall	At Wall

IRRIGATION
It is recommended to install a drain whenever possible. Require Gsky's consultation for > 35' / 10.5 m height wall.

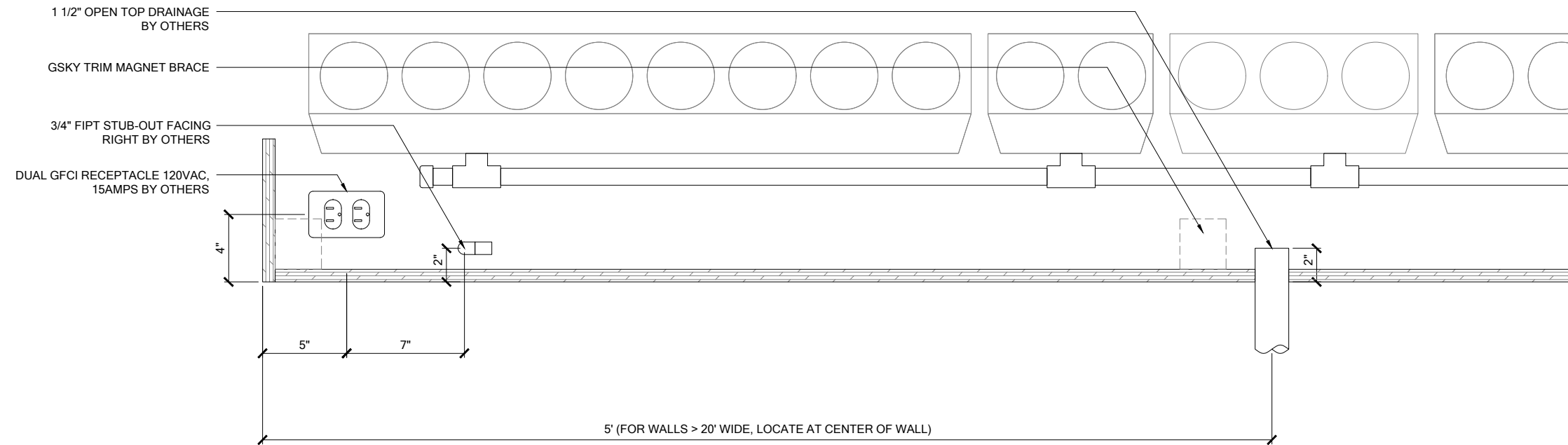
LIGHTING
LED or Metal Halide Lights recommended

Duration
10-12 hrs/day
Color Temp
4000-4500K
Intensity
150fc / 1500 lux (Even Flood)

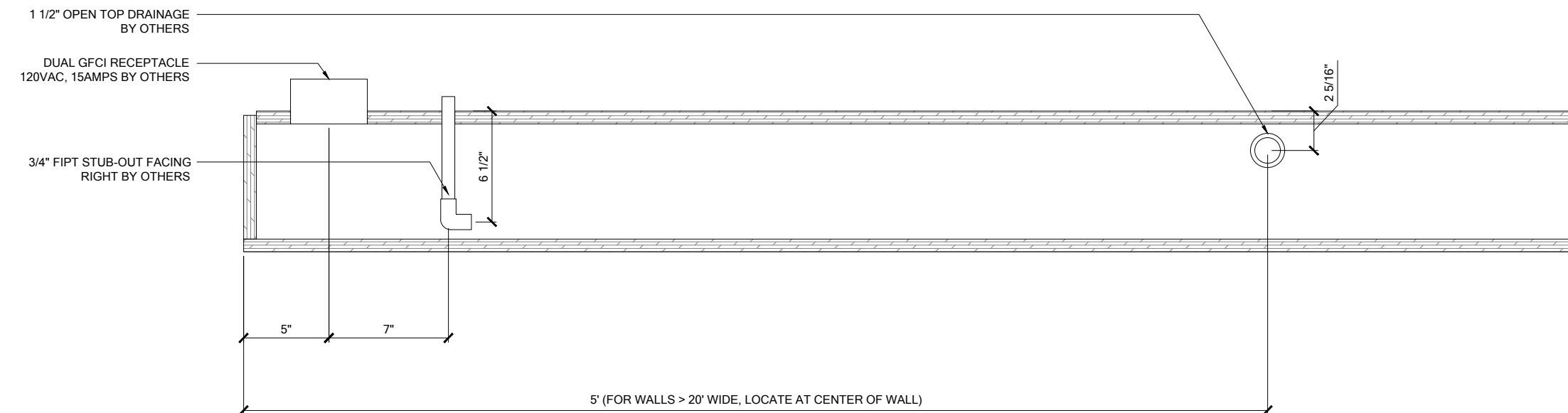
< 8'	OK			
< 13'	OK	OK		
> 13'		OK	OK	OK

MAINT. ACCESS
Walls over 40' / 12m need additional considerations. See Gsky maintenance manual.

GV2.0



1 ELEVATION
SCALE 1 1/2" = 1'-0"



2 PLAN
SCALE 1 1/2" = 1'-0"



VERSA WALL[®]
VTI-70 MECH. LAYOUT
VER. 1.1 11x17" (A3)

TO FLOOR
Weight is 10lbs/ft² 50kg/m²

3/4" SIDE/TOP
8 1/2" BOTTOM
TRIM
Pre-finished or unfinished
See gsky.com for details.

ICU BELOW WALL
For 50 ft² / 5 m² to 5000 ft² / 500 m²
Min width 50 3/4" / 129cm

SERVICE			
MANUAL	N/A	N/A	N/A
AUTOMATED	At Wall	At Wall	At Wall

IRRIGATION
It is recommended to install a drain whenever possible. Require GSKy's consultation for > 35' / 10.5 m height wall.

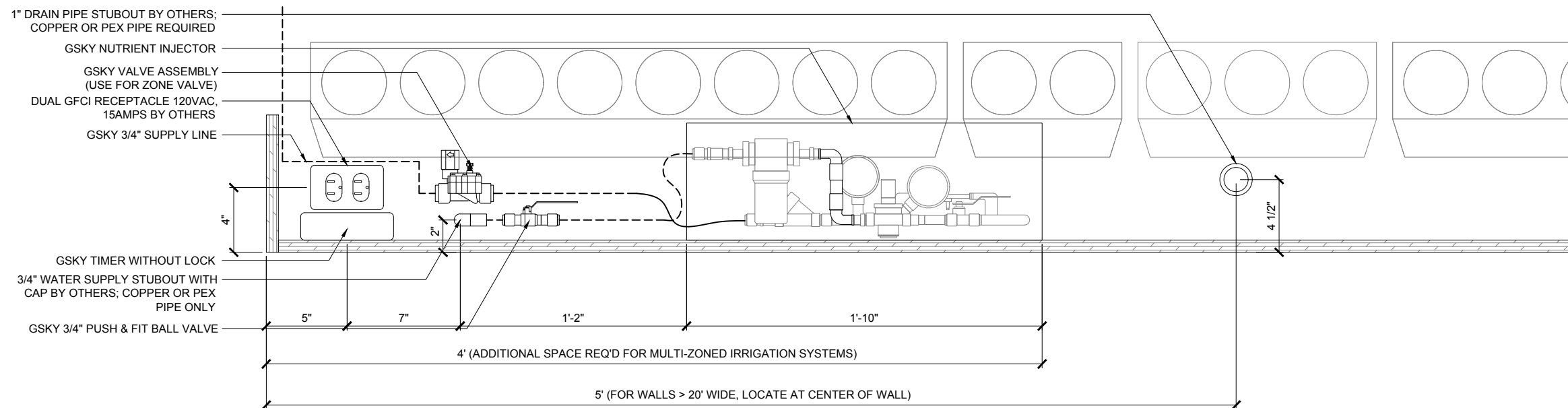
LIGHTING
LED or Metal Halide Lights recommended

Duration
10-12 hrs/day
Color Temp
4000-4500K
Intensity
150fc / 1500 lux (Even Flood)

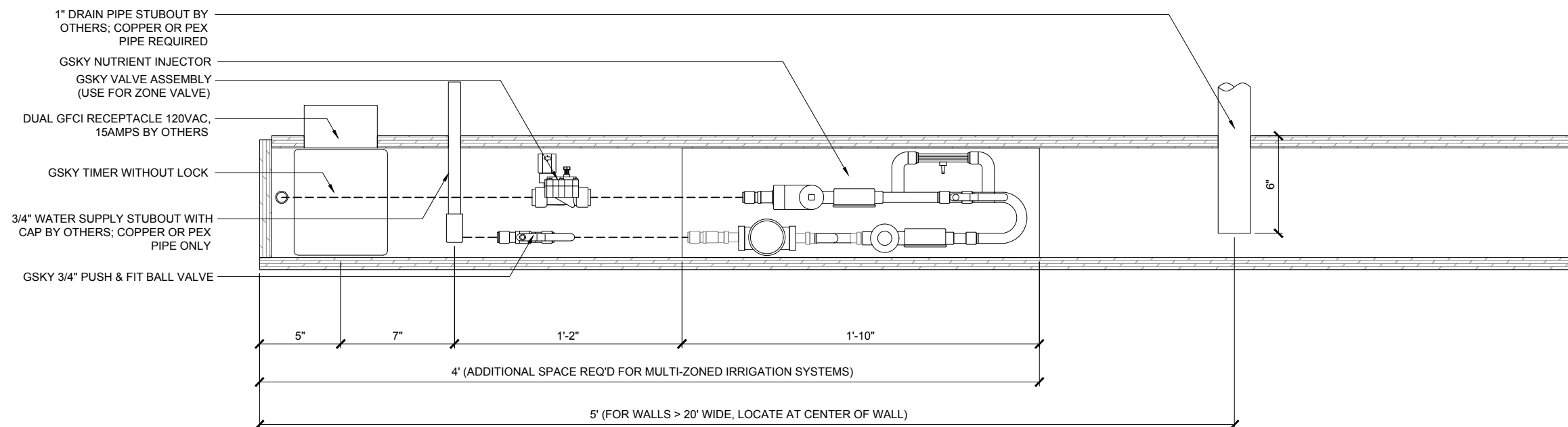
< 8'	OK		
< 13'	OK	OK	
> 13'		OK	OK

MAINT. ACCESS
Walls over 40' / 12m need additional considerations. See GSKy maintenance manual.

GV2.1



1 ELEVATION
SCALE 1 1/2" = 1'-0"



2 PLAN
SCALE 1 1/2" = 1'-0"

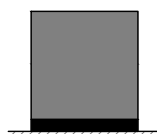


VERSA WALL®

VTI-70 IRRIGATION LAYOUT

VER. 1.1

11x17" (A3)



TO FLOOR

Weight is 10lbs/ft² 50kg/m²

3/4"	SIDE/TOP
8 1/2"	BOTTOM

TRIM

Pre-finished or unfinished
See gsky.com for details.



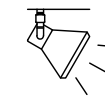
ICU BELOW WALL

For 50 ft² / 5 m² to 5000 ft² / 500 m²
Min width 50 3/4" / 129cm

SERVICE			
MANUAL	N/A	N/A	N/A
AUTOMATED	At Wall	At Wall	At Wall

IRRIGATION

It is recommended to install a drain whenever possible. Require Gsky's consultation for > 35' / 10.5 m height wall.



LIGHTING

LED or Metal Halide Lights recommended

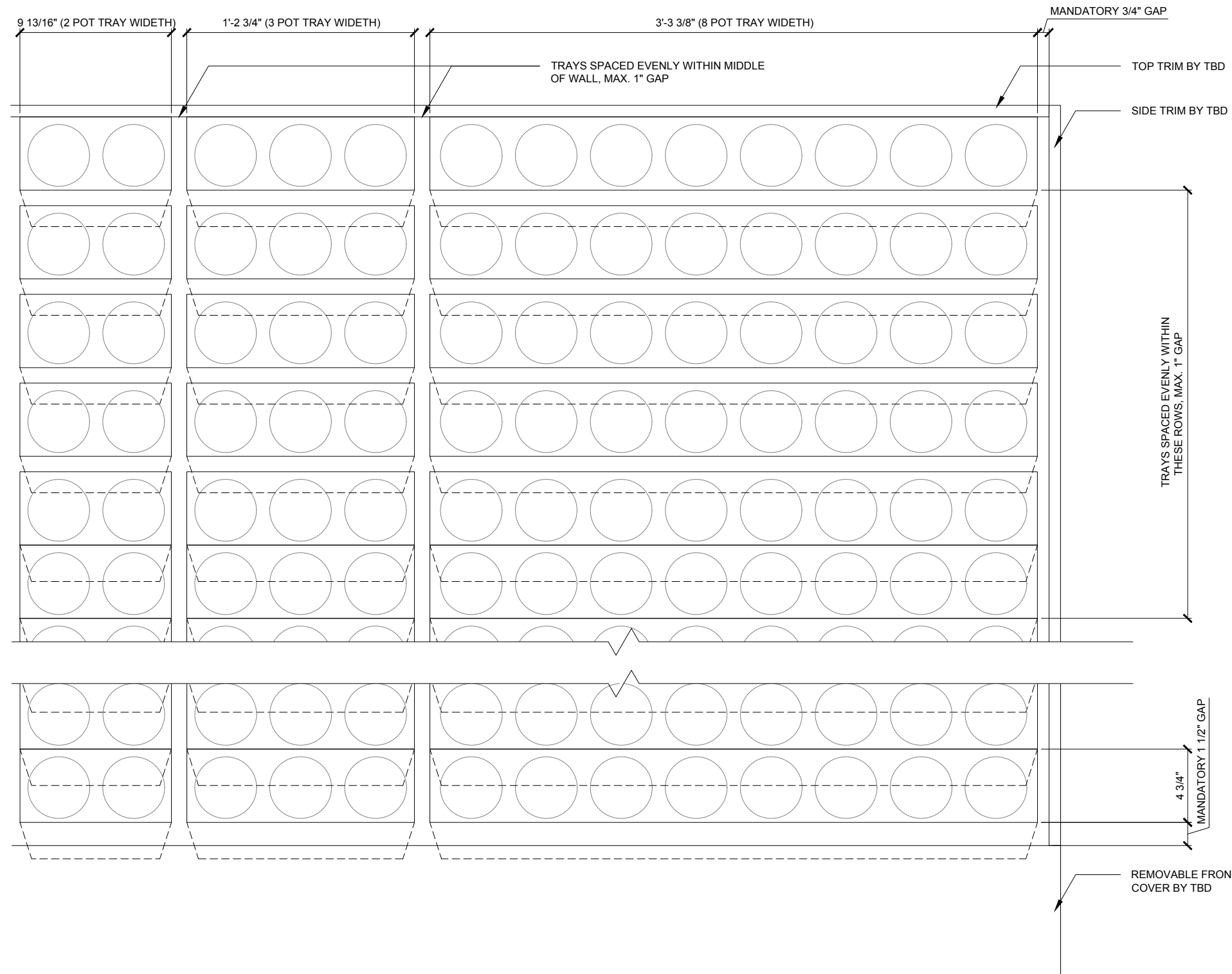
Duration	10-12 hrs/day
Color Temp	4000-4500K
Intensity	150fc / 1500 lux (Even Flood)

< 8'	OK		
< 13'	OK	OK	
> 13'		OK	OK

MAINT. ACCESS

Walls over 40' / 12m need additional considerations. See Gsky maintenance manual.

GV2.2



1 TRAY LAYOUT
SCALE 1 1/2" = 1'-0"

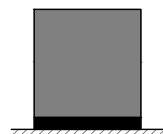


VERSA WALL®

VTI-70 TRAY LAYOUT

VER. 1.1

11x17" (A3)



TO FLOOR
Weight is 10lbs/ft² 50kg/m²

3/4"	SIDE/TOP
8 1/2"	BOTTOM

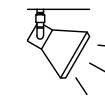
TRIM
Pre-finished or unfinished
See gsky.com for details.



ICU BELOW WALL
For 50 ft² / 5 m² to 5000 ft² / 500 m²
Min width 50 3/4" / 129cm

SERVICE			
MANUAL	N/A	N/A	N/A
AUTOMATED	At Wall	At Wall	At Wall

IRRIGATION
It is recommended to install a drain whenever possible. Require GSKy's consultation for > 35' / 10.5 m height wall.



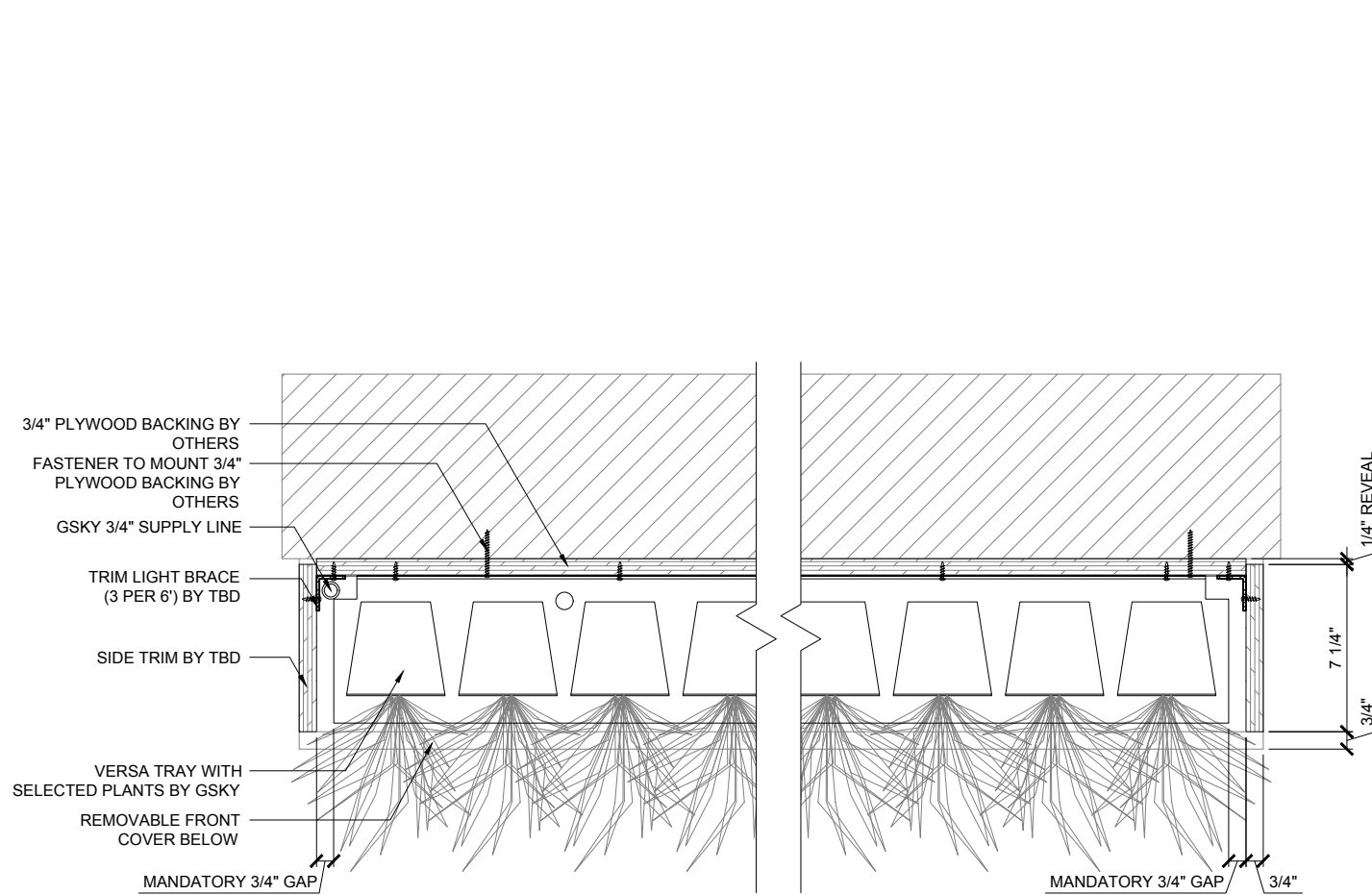
LIGHTING
LED or Metal Halide Lights recommended

Duration
10-12 hrs/day
Color Temp
4000-4500K
Intensity
150fc / 1500 lux
(Even Flood)

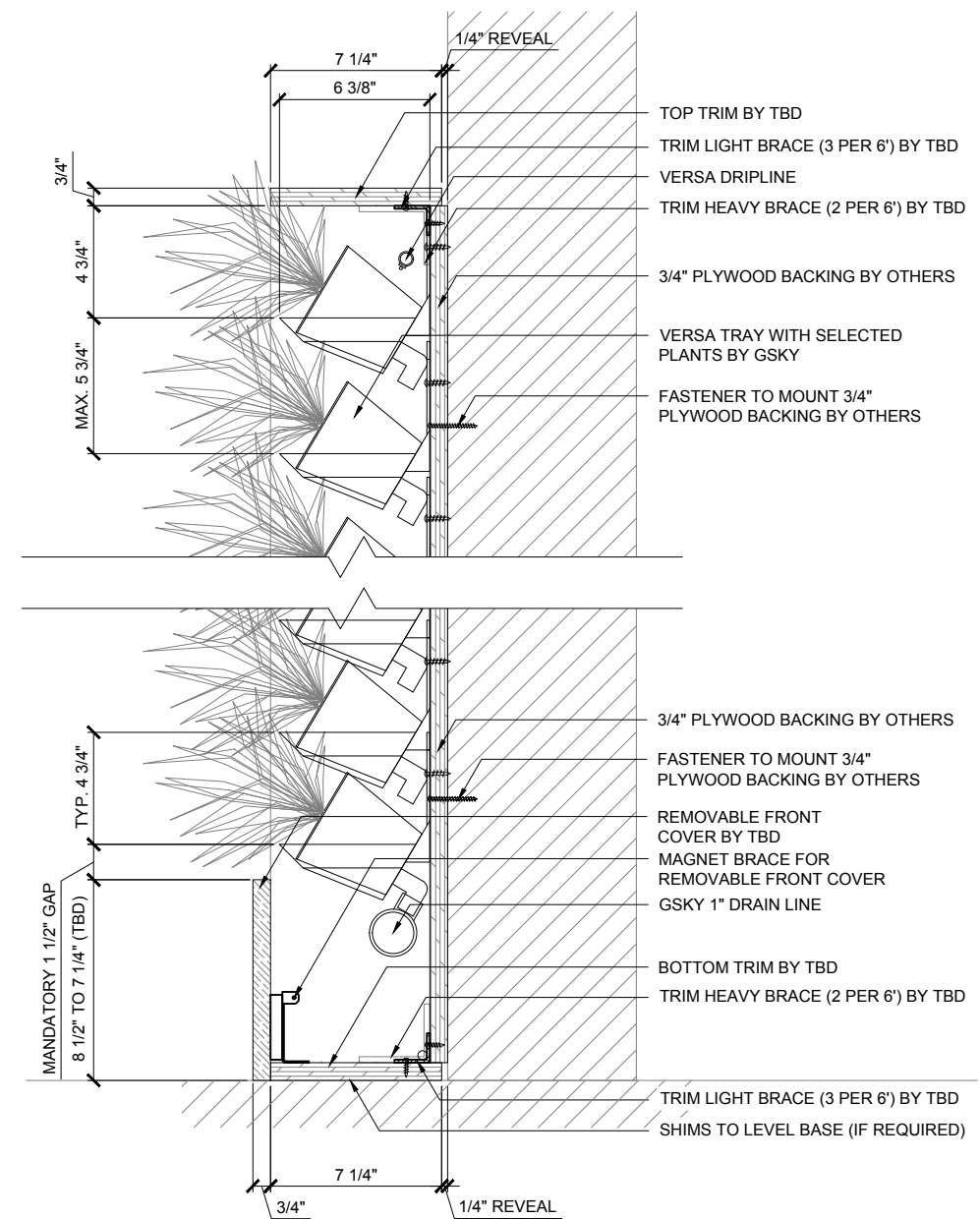
< 8'	OK			
< 13'	OK	OK		
> 13'		OK	OK	OK

MAINT. ACCESS
Walls over 40' / 12m need additional considerations. See GSKy maintenance manual.

GV3.0



1 PLAN
SCALE 1 1/2" = 1'-0"



2 SECTION
SCALE 1 1/2" = 1'-0"

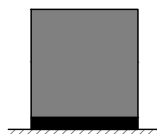


VERSA WALL®

VTI-70 DETAILS

VER. 1.1

11x17" (A3)



TO FLOOR
Weight is 10lbs/ft² 50kg/m²

3/4"	SIDE/TOP
8 1/2"	BOTTOM

TRIM
Pre-finished or unfinished
See gsky.com for details.



ICU BELOW WALL
For 50 ft² / 5 m² to 5000 ft² / 500 m²
Min width 50 3/4" / 129cm

SERVICE			
MANUAL	N/A	N/A	N/A
AUTOMATED	At Wall	At Wall	At Wall

IRRIGATION
It is recommended to install a drain whenever possible. Require GSKy's consultation for > 35' / 10.5 m height wall.



LIGHTING
LED or Metal Halide Lights recommended

Duration	10-12 hrs/day
Color Temp	4000-4500K
Intensity	150fc / 1500 lux (Even Flood)



MAINT. ACCESS
Walls over 40' / 12m need additional considerations. See GSKy maintenance manual.

< 8'	OK		
< 13'	OK	OK	
> 13'		OK	OK

GV3.1