

VERSA TRAYS

VERSA DRIPLINE

MAGNET BRACE FOR REMOVABLE FRONT COVER BY TBD

BOTTOM TRIM BY TBD

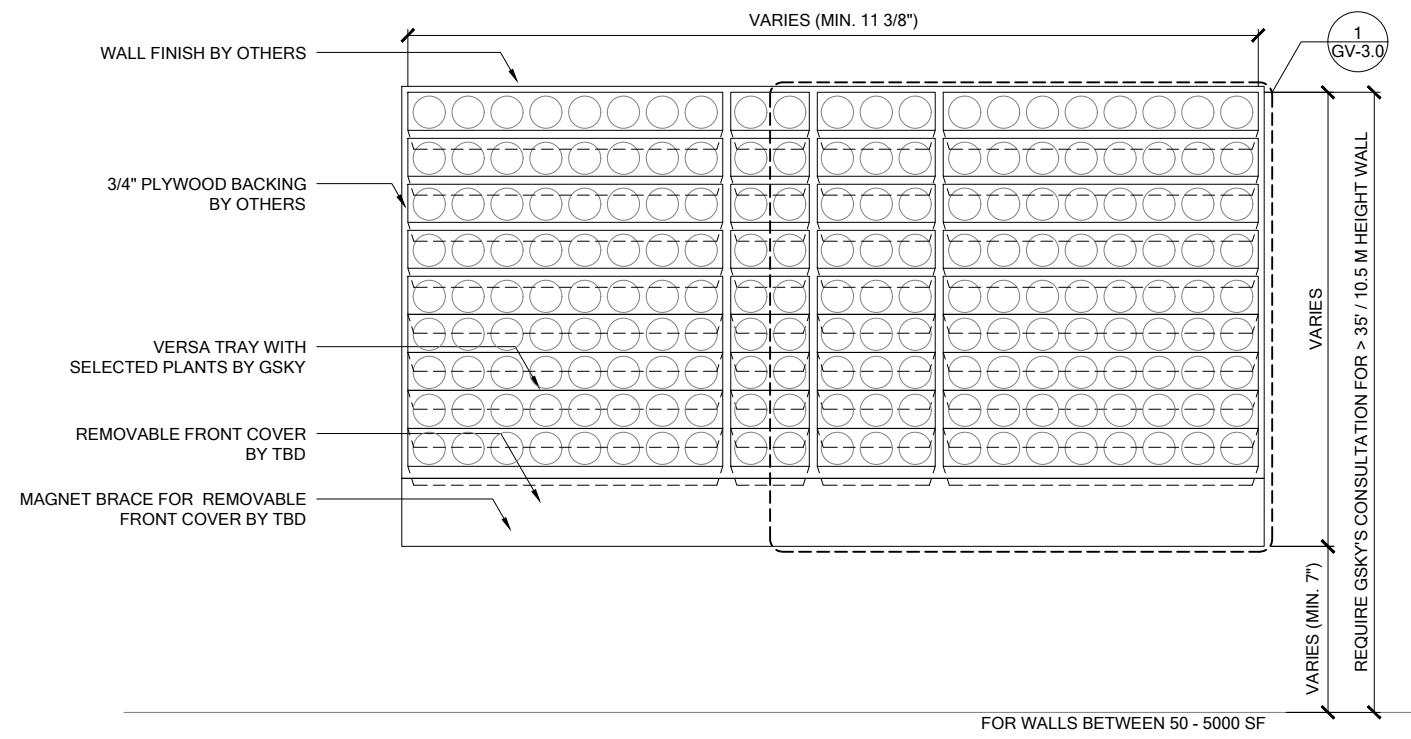
REMOVABLE FRONT COVER BY TBD

GSKY NUTRIENT INJECTOR

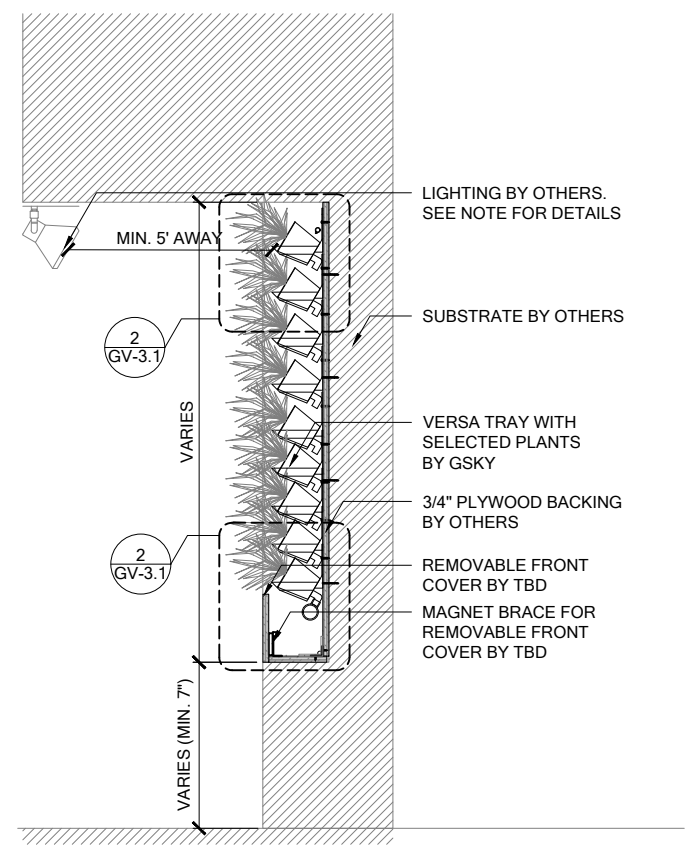


**VERSA** WALL<sup>®</sup>

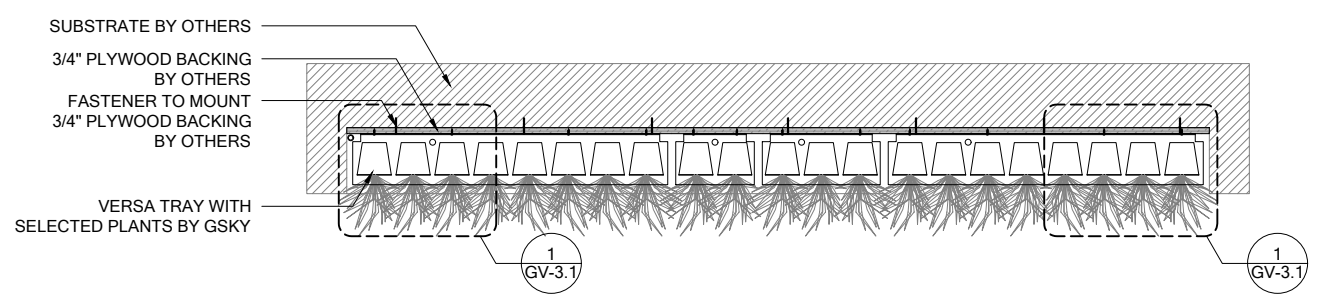
ABOVE THE FLOOR / ICU BELOW WALL  
VAI-7N



**1 ELEVATION**  
SCALE 1/2" = 1'-0"



**3 SECTION**  
SCALE 1/2" = 1'-0"



**2 PLAN**  
SCALE 1/2" = 1'-0"



**VERSA WALL**<sup>®</sup>  
VAI-7N GENERAL OVERVIEW  
VER. 1.1      11x17" (A3)

**ABOVE FLOOR**  
Weight is 10lbs/ft<sup>2</sup> 50kg/m<sup>2</sup>

**TRIM**  
8 1/2" BOTTOM  
NOTE: pipes and edges of trays will be exposed unless recessed or covered

**ICU BELOW WALL**  
For 50 ft<sup>2</sup> / 5 m<sup>2</sup> to 5000 ft<sup>2</sup> / 500 m<sup>2</sup>  
Min width 50 3/4" / 129cm

SERVICE			
MANUAL	N/A	N/A	N/A
AUTOMATED	At Wall	At Wall	At Wall

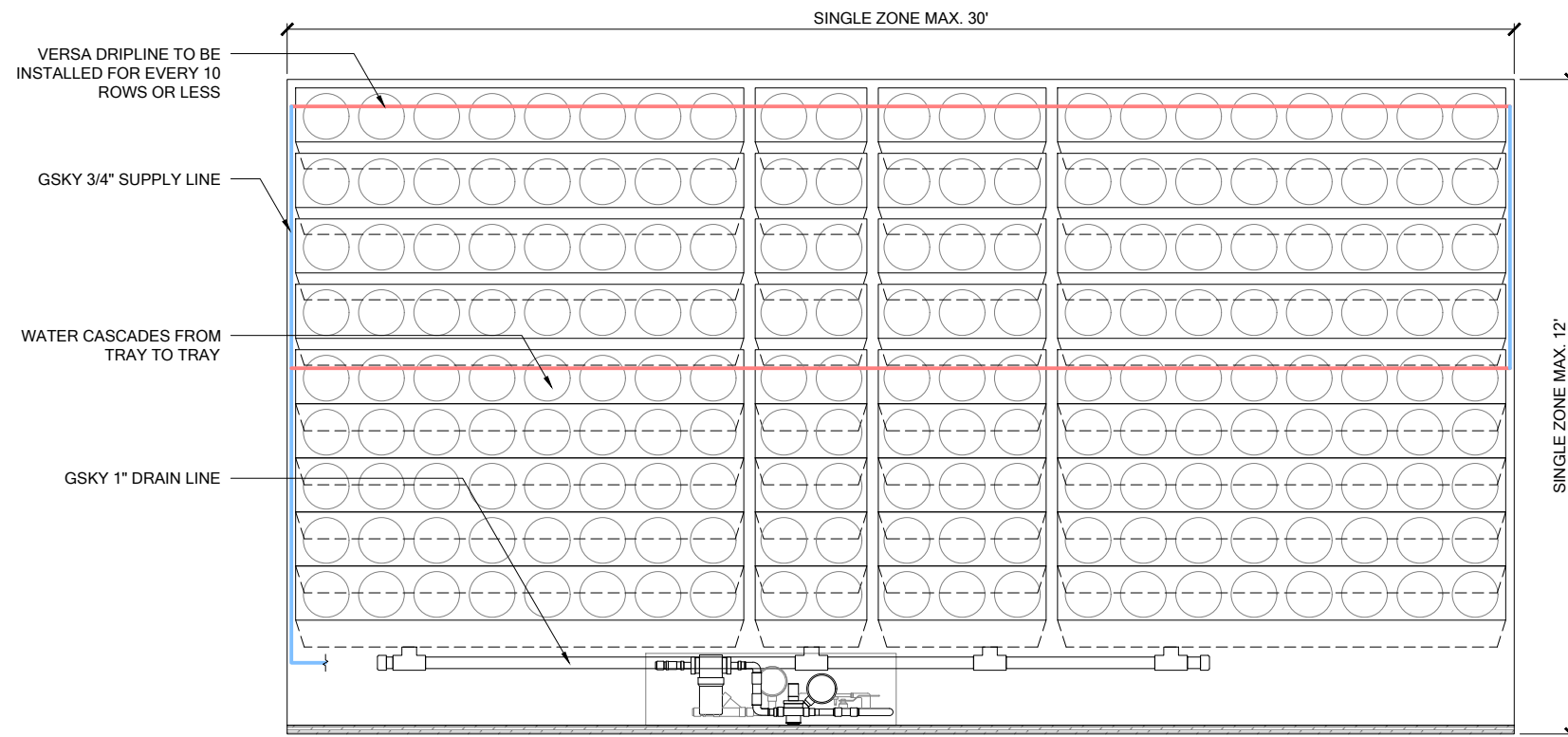
**IRRIGATION**  
It is recommended to install a drain whenever possible. Require GSKy's consultation for > 35' / 10.5 m height wall.

**LIGHTING**  
LED or Metal Halide Lights recommended

< 8'	OK			
< 13'	OK	OK		
> 13'		OK	OK	OK

**MAINT. ACCESS**  
Walls over 40' / 12m need additional considerations. See GSKy maintenance manual.

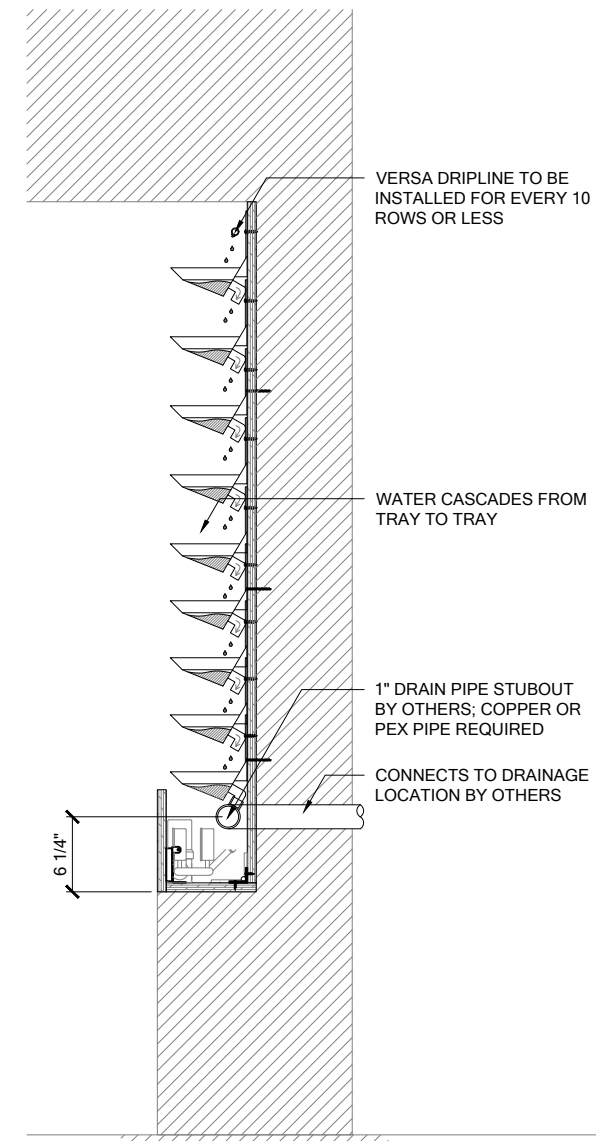
**GV1.0**



WARNING! LOCATION OF STUBOUT FOR WATER SUPPLY IS CRITICAL AS IT DETERMINES THE LOCATION OF THE WALL.

WARNING! LOCATION OF STUBOUT FOR DRAIN IS CRITICAL AS IT DETERMINES THE LOCATION OF THE WALL.

**1 ELEVATION**  
SCALE 3/4" = 1'-0"



**2 SECTION**  
SCALE 3/4" = 1'-0"



**VERSA WALL**<sup>®</sup>  
VAI-7N IRRIGATION OVERVIEW  
VER. 1.1      11x17" (A3)

**ABOVE FLOOR**  
Weight is 10lbs/ft<sup>2</sup> 50kg/m<sup>2</sup>

**TRIM**  
8 1/2"  
SIDE/TOP  
BOTTOM  
NOTE: pipes and edges of trays will be exposed unless recessed or covered

**ICU BELOW WALL**  
For 50 ft<sup>2</sup> / 5 m<sup>2</sup> to 5000 ft<sup>2</sup> / 500 m<sup>2</sup>  
Min width 50 3/4" / 129cm

SERVICE			
MANUAL	N/A	N/A	N/A
AUTOMATED	At Wall	At Wall	At Wall

**IRRIGATION**  
It is recommended to install a drain whenever possible. Require GSKy's consultation for > 35' / 10.5 m height wall.

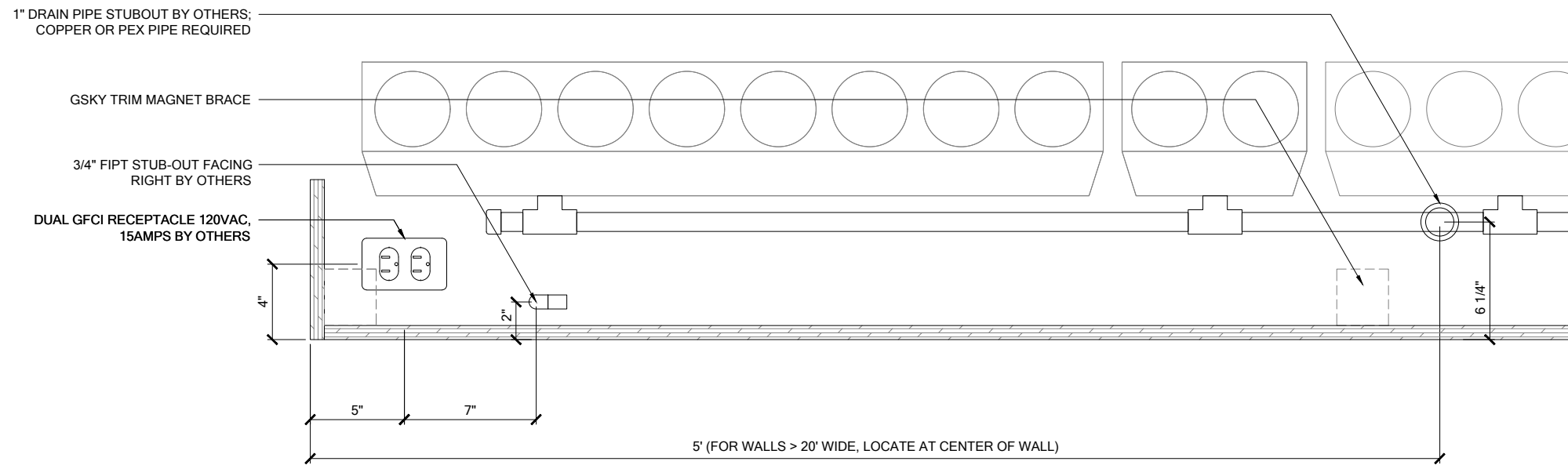
**LIGHTING**  
LED or Metal Halide Lights recommended

Duration  
10-12 hrs/day  
Color Temp  
4000-4500K  
Intensity  
150fc / 1500 lux (Even Flood)

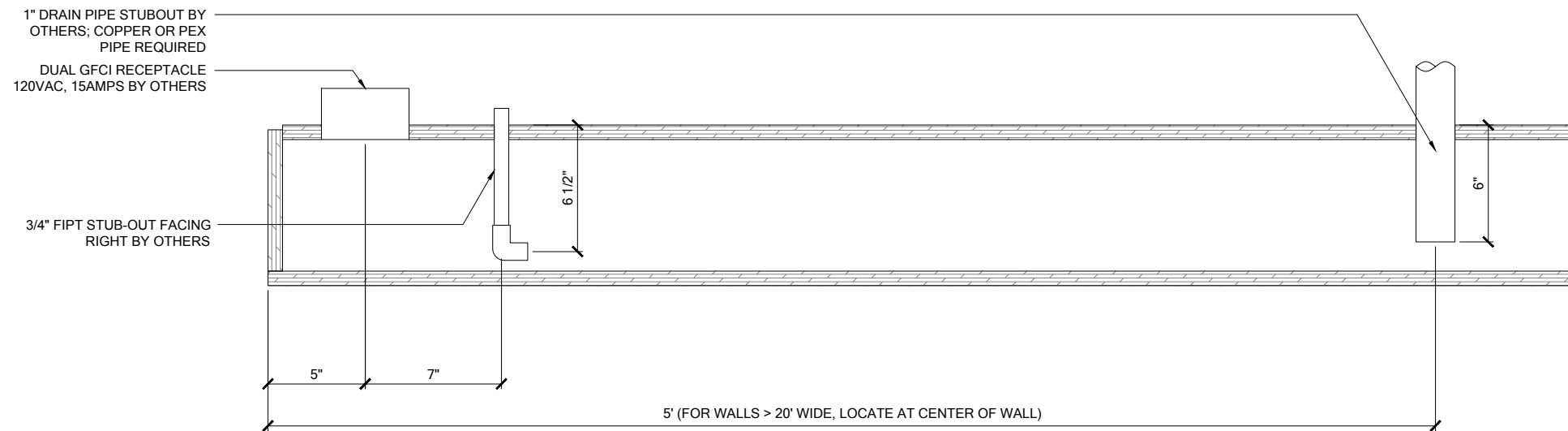
< 8'	OK		
< 13'	OK	OK	
> 13'		OK	OK

**MAINT. ACCESS**  
Walls over 40' / 12m need additional considerations. See GSKy maintenance manual.

**GV2.0**



**1 ELEVATION**  
SCALE 1 1/2" = 1'-0"



**2 PLAN**  
SCALE 1 1/2" = 1'-0"



**VERSA WALL**®

VAI-7N MECH. LAYOUT

VER. 1.1

11x17" (A3)

**ABOVE FLOOR**  
Weight is 10lbs/ft² 50kg/m²

- SIDE/TOP  
8 1/2" BOTTOM

**TRIM**  
NOTE: pipes and edges of trays  
will be exposed unless recessed  
or covered

**ICU BELOW WALL**  
For 50 ft² / 5 m² to 5000 ft² / 500 m²  
Min width 50 3/4" / 129cm

SERVICE			
MANUAL	N/A	N/A	N/A
AUTOMATED	At Wall	At Wall	At Wall

**IRRIGATION**  
It is recommended to install a drain  
whenever possible. Require GSKy's  
consultation for > 35' / 10.5 m height wall.

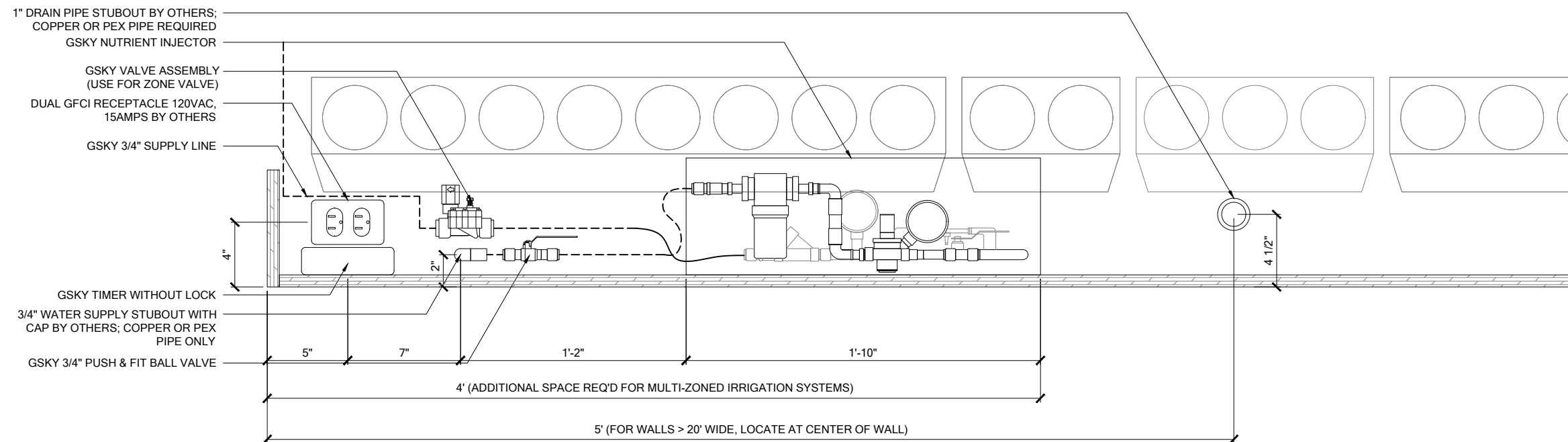
**LIGHTING**  
LED or Metal Halide Lights  
recommended

Duration  
10-12 hrs/day  
Color Temp  
4000-4500K  
Intensity  
150fc / 1500 lux  
(Even Flood)

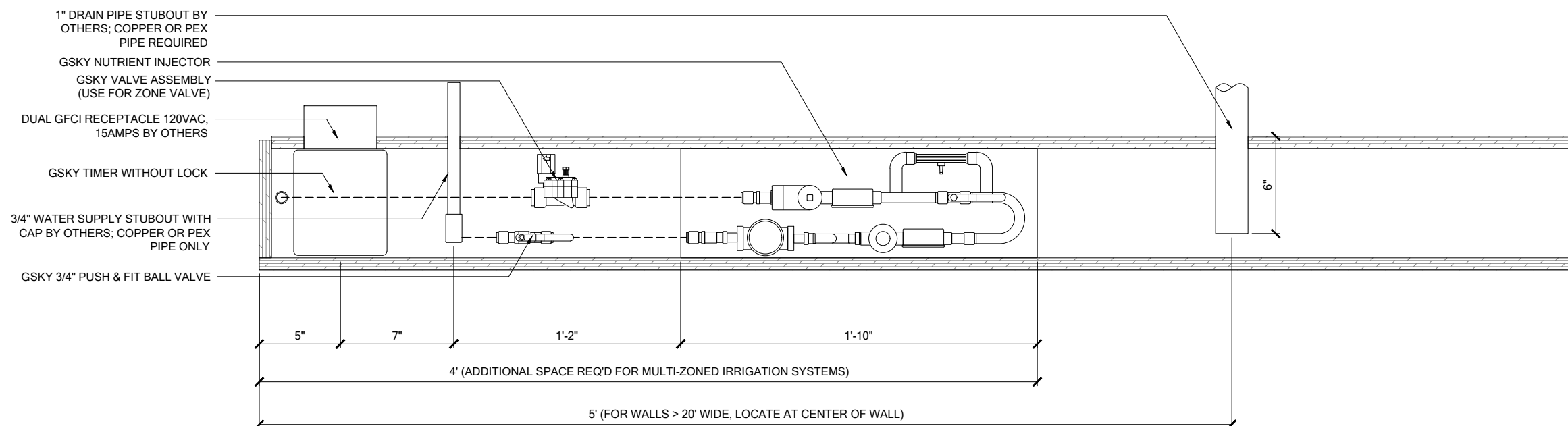
< 8'	OK			
< 13'	OK	OK		
> 13'		OK	OK	OK

**MAINT. ACCESS**  
Walls over 40' / 12m need additional  
considerations. See GSKy  
maintenance manual.

**GV2.1**



**1 ELEVATION**  
SCALE 1 1/2" = 1'-0"



**2 PLAN**  
SCALE 1 1/2" = 1'-0"



**VERSA WALL®**

**VAI-7N IRRIGATION LAYOUT**

VER. 1.1

11x17" (A3)

**ABOVE FLOOR**  
Weight is 10lbs/ft² 50kg/m²

**TRIM**  
8 1/2" SIDE/TOP  
8 1/2" BOTTOM

NOTE: pipes and edges of trays will be exposed unless recessed or covered

**ICU BELOW WALL**  
For 50 ft² / 5 m² to 5000 ft² / 500 m²  
Min width 50 3/4" / 129cm

SERVICE			
MANUAL	N/A	N/A	N/A
AUTOMATED	At Wall	At Wall	At Wall

**IRRIGATION**  
It is recommended to install a drain whenever possible. Require GSKy's consultation for > 35' / 10.5 m height wall.

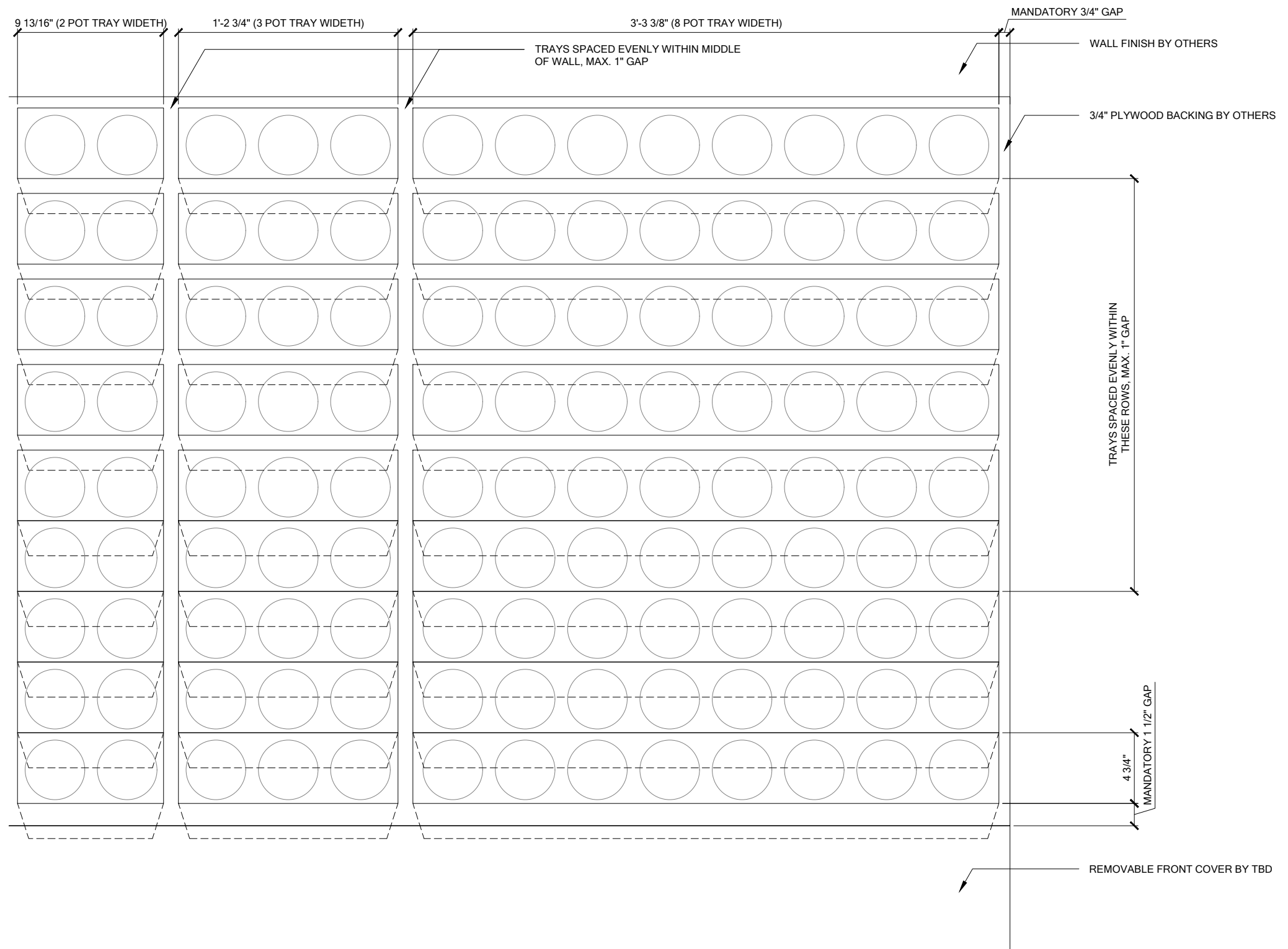
**LIGHTING**  
LED or Metal Halide Lights recommended

Duration  
10-12 hrs/day  
Color Temp  
4000-4500K  
Intensity  
150fc / 1500 lux (Even Flood)

**MAINT. ACCESS**  
Walls over 40' / 12m need additional considerations. See GSKy maintenance manual.

< 8'	OK		
< 13'	OK	OK	
> 13'	OK	OK	OK

**GV2.2**



**1 TRAY LAYOUT**  
SCALE 1 1/2" = 1'-0"



**VERSA WALL®**

VAI-7N TRAY LAYOUT

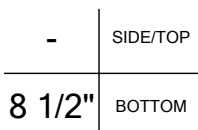
VER. 1.1

11x17" (A3)



**ABOVE FLOOR**

Weight is 10lbs/ft<sup>2</sup> / 50kg/m<sup>2</sup>



**TRIM**

NOTE: pipes and edges of trays will be exposed unless recessed or covered



**ICU BELOW WALL**

For 50 ft<sup>2</sup> / 5 m<sup>2</sup> to 5000 ft<sup>2</sup> / 500 m<sup>2</sup>  
Min width 50 3/4" / 129cm

SERVICE			
MANUAL	N/A	N/A	N/A
AUTOMATED	At Wall	At Wall	At Wall

**IRRIGATION**

It is recommended to install a drain whenever possible. Require GSKy's consultation for > 35' / 10.5 m height wall.



**LIGHTING**

LED or Metal Halide Lights recommended

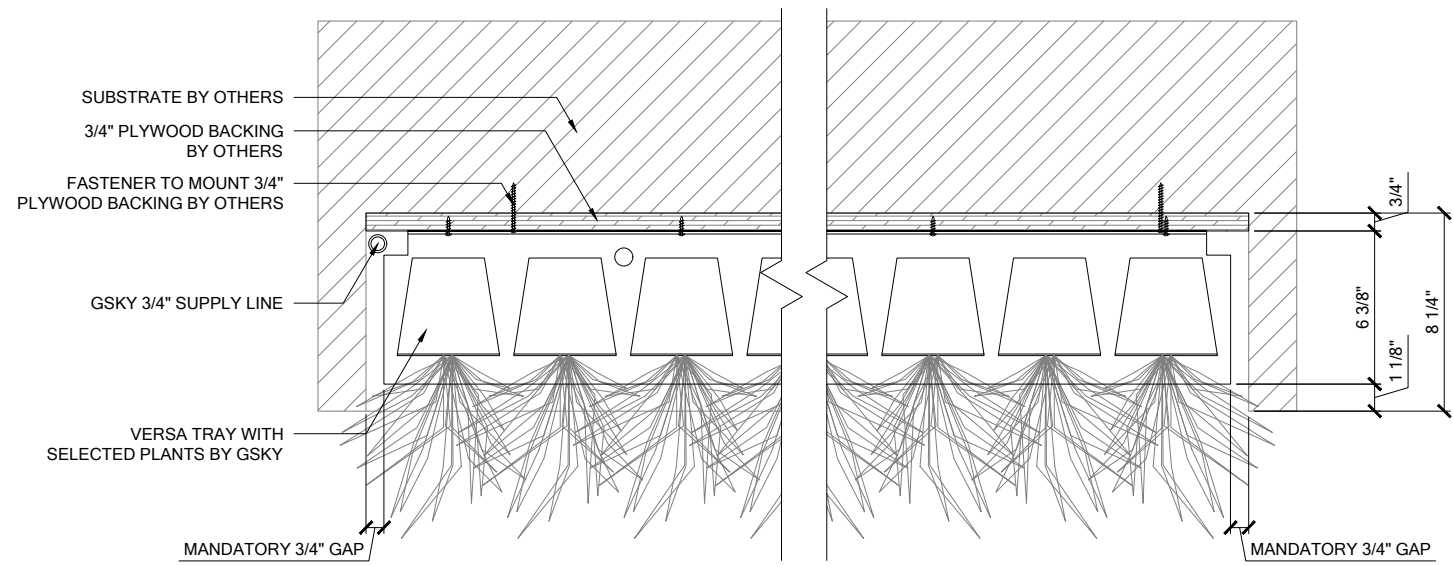
Duration  
10-12 hrs/day  
Color Temp  
4000-4500K  
Intensity  
150fc / 1500 lux  
(Even Flood)

< 8'	OK		
< 13'	OK	OK	
> 13'		OK	OK

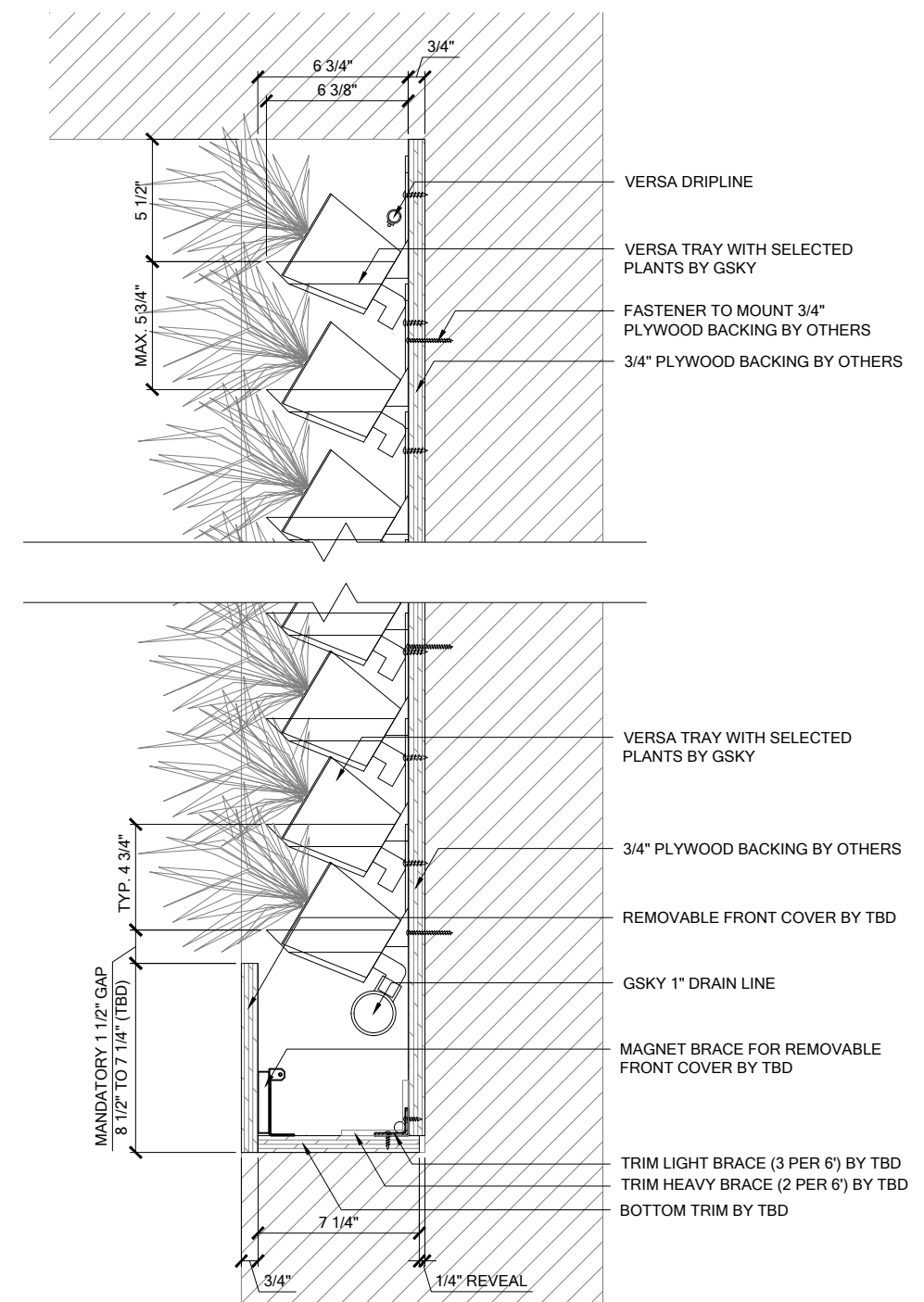
**MAINT. ACCESS**

Walls over 40' / 12m need additional considerations. See GSKy maintenance manual.

**GV3.0**



**1 PLAN**  
SCALE 1 1/2" = 1'-0"



**2 SECTION**  
SCALE 1 1/2" = 1'-0"



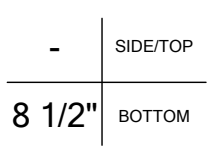
# VERSA WALL®

## VAI-7N DETAILS

VER. 1.1      11x17" (A3)



**ABOVE FLOOR**  
Weight is 10lbs/ft² 50kg/m²



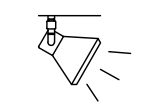
**TRIM**  
8 1/2"  
NOTE: pipes and edges of trays will be exposed unless recessed or covered



**ICU BELOW WALL**  
For 50 ft² / 5 m² to 5000 ft² / 500 m²  
Min width 50 3/4" / 129cm

SERVICE			
MANUAL	N/A	N/A	N/A
AUTOMATED	At Wall	At Wall	At Wall

**IRRIGATION**  
It is recommended to install a drain whenever possible. Require GSKY's consultation for > 35' / 10.5 m height wall.



**LIGHTING**  
LED or Metal Halide Lights recommended

Duration  
10-12 hrs/day  
Color Temp  
4000-4500K  
Intensity  
150fc / 1500 lux  
(Even Flood)

< 8'	OK		
< 13'	OK	OK	
> 13'		OK	OK

**MAINT. ACCESS**  
Walls over 40' / 12m need additional considerations. See GSKY maintenance manual.

# GV3.1