

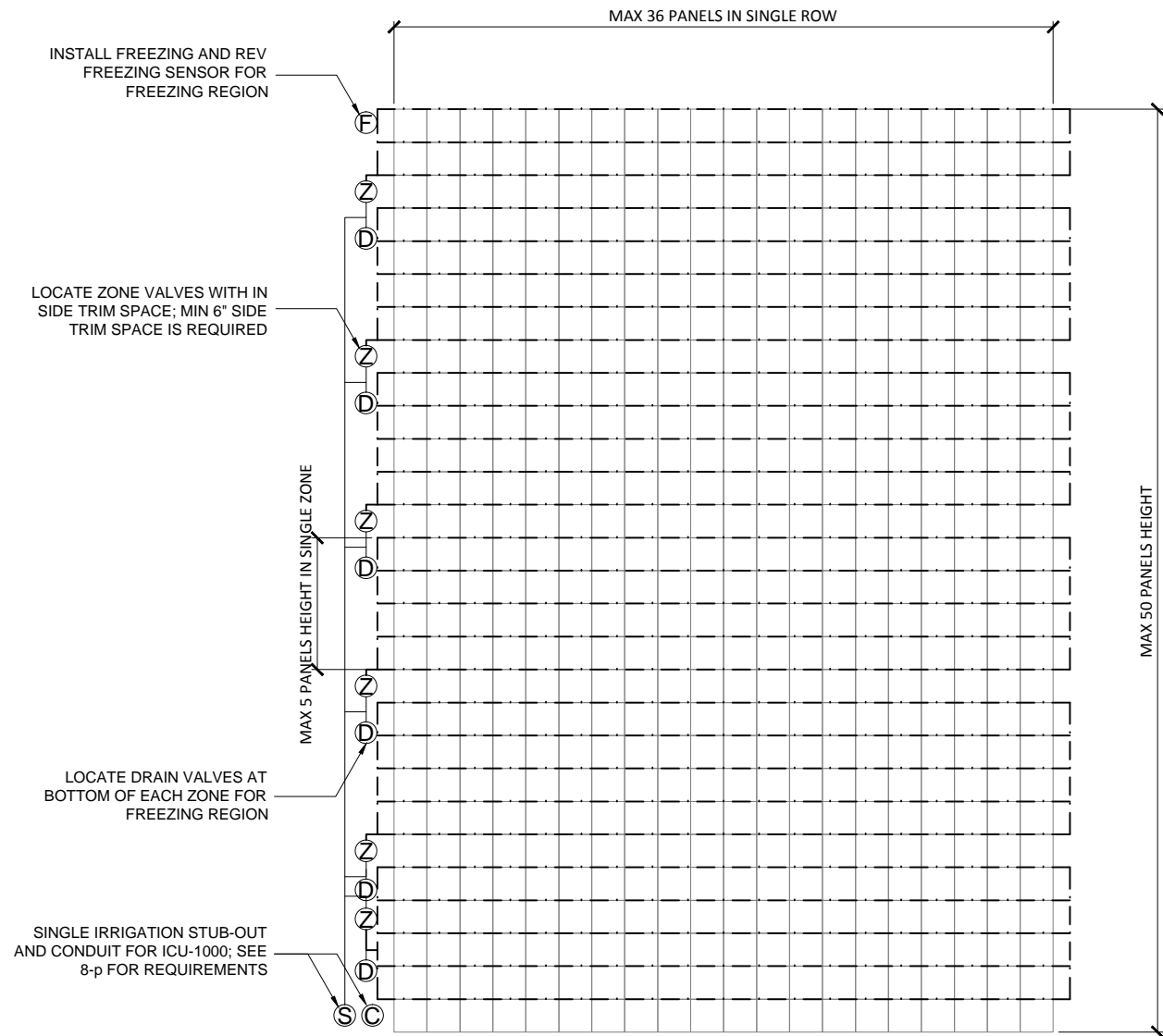
DRAWING TITLE:
GSKY GREEN WALL PANELS
IRRIGATION LAYOUT 2
 IRRIGATION LAYOUT FOR ICU-1000 -
 ZONE VALVE DETAIL -



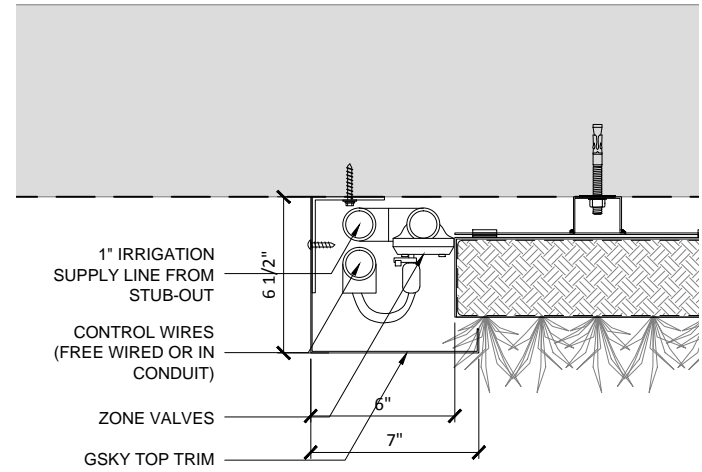
#704 - 318 HOMER ST
 VANCOUVER, BC V6B 2V2
 604-708-0611 ph 604-357-1315 fax
 www.gsky.com

DRAWING # **11-p** DATE: AUG 18, 2010 SCALE: AS NOTED
 REV DATE: N/A PAPER SIZE: 11 x 17

MAX. 36 PANELS IN EACH CONTINUOUS ROW
 MAX. 5 PANELS HEIGHT IN ONE ZONE
 MAIN IRRIGATION SUPPLY LINE CAN BE COPPER, PEX OR PVC TO MEET
 LOCAL CODE (BY PLUMBER)
 STUB-OUT SHOULD BE INSTALLED WITH FEMALE PIPE THREAD FITTINGS



1 IRRIGATION LAYOUT FOR ICU-1000 / ZONE VALVES IN SIDE TRIM
 SCALE NTS (FILE # 11-p-1)



2 ZONE VALVE DETAIL FOR ICU-1000 IN TOP TRIM
 SCALE 1-1/2" = 1'-0" (FILE # 11-p-2)