

DRAWING TITLE:

GSKY GREEN WALL PANELS IRRIGATION CONTROL UNIT (ICU) DESIGNS

ICU-1000
ICU-600

PLUMBING REQUIREMENTS
ELECTRICAL REQUIREMENTS



#704 - 318 HOMER ST
VANCOUVER, BC V6B 2V2
604-708-0611 ph 604-357-1315 fax
www.gsky.com

DRAWING #

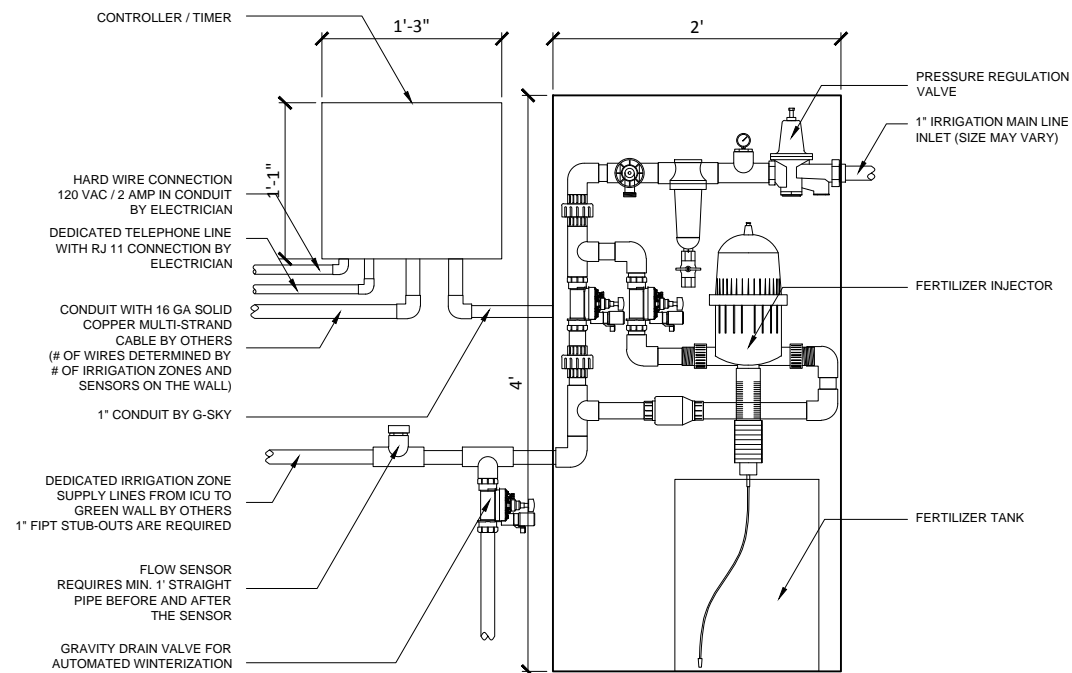
9-p

DATE: AUG 18, 2010 SCALE: AS NOTED
REV DATE: N/A PAPER SIZE: 11 x 17

ICU-1000

IRRIGATION CONTROL UNIT FOR:

- *GREEN WALLS LARGER THAN 1080SQFT (INTERIOR OR EXTERIOR)
- *EXTERIOR GREEN WALLS IN FREEZING CLIMATES USDA PLANT ZONE 8 OR BELOW (USDA PLANT ZONE 8 = MAX 20F OR -6.7C)



*REQUIREMENTS:

- *ICU - 48"h x 24"w x 36"d (INCLUDING DOOR SWING)
- *CONTROLLER - 13"h x 15"w x 20"d (INCLUDING DOOR SWING)
- *EASY ACCESS FOR MAINTENANCE
- *ADEQUATE PRESSURE TO GET MIN PSI AT BOTTOM OF GREEN WALL (TYP 65 PSI, UP TO 50 FT HEIGHT WALL)
- INSTALL BOOSTER PUMP IF REQUIRED (BY PLUMBER)
- *120V / 2 AMP POWER (HARD WIRE) (BY ELECTRICIAN)
- *DEDICATED TELEPHONE LINE RJ 11 (FOR OTHERS)
- *GROUNDING CONNECTION IF REQUIRED (BY ELECTRICIAN)
- *1 1/4" CONDUIT BETWEEN ACC AND EACH TRIM SPACES FOR ZONE VALVE CONTROL WIRES AND FREEZING SENSOR (BY ELECTRICIAN)
- *BACK-FLOW PREVENTOR AS REQUIRED (BY PLUMBER)
- *GREEN WALL MUST BE DESIGNED TO HAVE SPACE FOR ZONE VALVES TO RUN ALONG THE SIDE OF THE GREEN WALL WITHIN THE SIDE TRIM (MIN 7" WIDE TRIM) OR ABOVE THE WALL IN THE TOP TRIM (MIN 8" HIGH TRIM)
- *NON-FREEZING INDOOR SPACE WITH FLOOR DRAIN

1

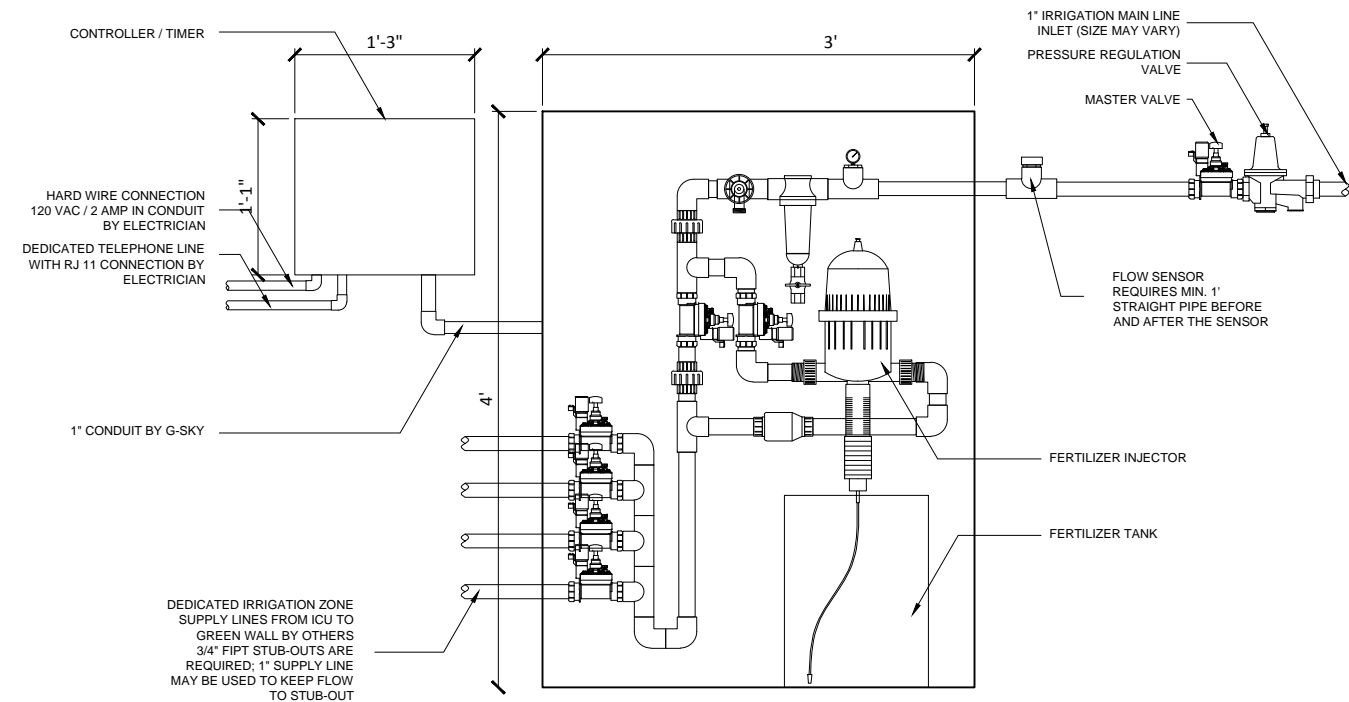
ICU-1000 / ZONE VALVES AT GREEN WAL

SCALE 3/4" - 1'-0" (FILE # 9-p-1)

ICU-600

IRRIGATION CONTROL UNIT FOR:

- *GREEN WALLS SMALLER THAN 1080 SQFT (INTERIOR OR EXTERIOR)
- *EXTERIOR WALLS IN USDA PLANT ZONE 9 OR HIGHER (NON-FREEZING CLIMATES)



*REQUIREMENTS:

- *ICU - 48"h x 36"w x 48"d (INCLUDING DOOR SWING)
- *CONTROLLER - 13"h x 15"w x 20"d (INCLUDING DOOR SWING)
- *EASY ACCESS FOR MAINTENANCE
- *ADEQUATE PRESSURE TO GET MIN PSI AT BOTTOM OF GREEN WALL (TYP 65 PSI, UP TO 50 FT HEIGHT WALL)
- INSTALL BOOSTER PUMP IF REQUIRED (BY PLUMBER)
- *120V / 2 AMP POWER (HARD WIRE) (BY ELECTRICIAN)
- *DEDICATED TELEPHONE LINE RJ 11 (BY OTHERS)
- *GROUNDING CONNECTION IF REQUIRED (BY ELECTRICIAN)
- *BACK-FLOW PREVENTOR AS REQUIRED (BY PLUMBER)
- *CAN BE EXPANDED MAX 6 ZONES TO ACCOMMODATE IF THERE IS NO SPACE FOR VALVES AT THE GREEN WALL(S)
- *NON-FREEZING INDOOR SPACE WITH FLOOR DRAIN
- *CAN BE LOCATED OUTDOORS WITH ADDITIONAL ENCLOSURE
- *CAN BE CUSTOM DESIGNED TO ACCOMMODATE FREEZING CLIMATES

2

ICU-600 / ZONE VALVES AT ICU

SCALE 3/4" - 1'-0" (FILE # 9-p-2)