

DRAWING TITLE:

GSKY GREEN WALL PANELS

EIFS WALL STRUCTURE / INTERIOR OR EXTERIOR

3D VIEW
PLAN DETAIL

SECTION DETAIL
FASTENER DETAIL



#704 - 318 HOMER ST
VANCOUVER, BC V6B 2V2
604-708-0611 ph 604-357-1315 fax
www.gsky.com

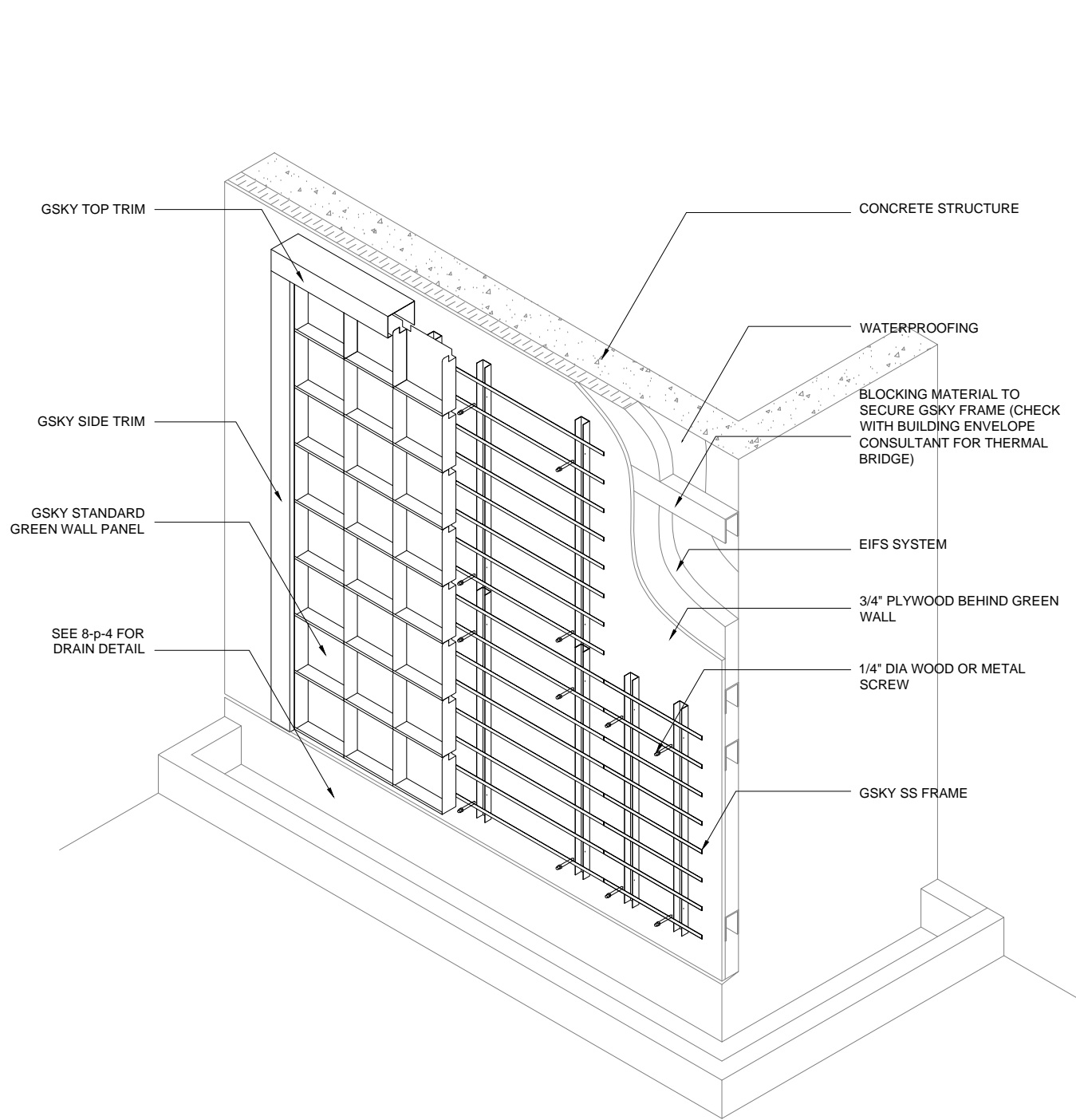
DESIGN NOTE:

- *STRUCTURE TYPE SHOWN ON 1-p, 2-p, 3-p AND 4-p CAN BE USED
- *STRUCTURE MUST SUPPORT 30 LB/SQ.FT SATURATED GSKY GREEN WALL SYSTEM
- *WALL SURFACE MUST BE SMOOTH
- *3/4" PLYWOOD MUST BE INSTALLED BEHIND GREEN WALL AREA
- *BLOCKING AT GSKY FRAME SCREW LOCATIONS MUST BE INSTALLED; CHECK WITH ENVELOPE CONSULTANT FOR THERMAL BRIDGE
- *WATERPROOFING IS REQUIRED (LIQUID OR SELF ADHESIVE TYPE IS RECOMMENDED)
- *ADEQUATE LIGHTING MUST BE DESIGNED AND INSTALLED (FOR INTERIOR GREEN WALL)
- *WALL MUST BE ACCESSIBLE FOR MAINTENANCE (LIFT ACCESS MAY BE REQUIRED)
- *TRIM WIDTH MAY INCREASE DEPENDING ON LOCATION OF ZONE VALVES; SEE 9-p, 10-p AND 11-p FOR DETAIL
- *GREEN WALL BELOW MUST TO BE CLEAR FOR MAINTENANCE LIFT ACCESS

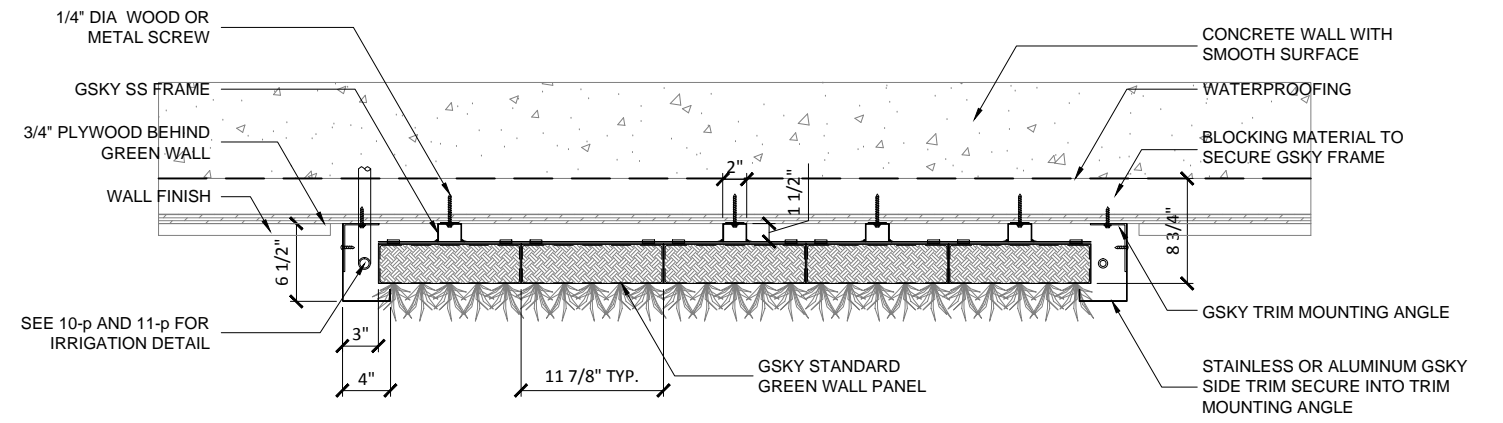
DRAWING #

6-p

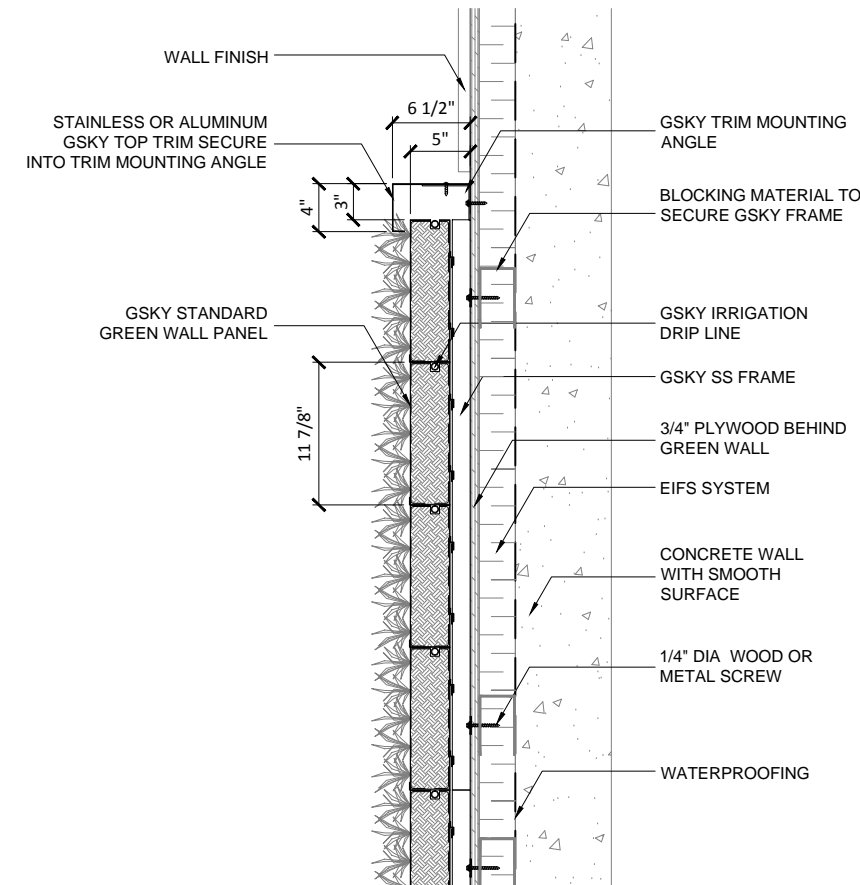
DATE: AUG 18, 2010 SCALE: AS NOTED
REV DATE: N/A PAPER SIZE: 11 x 17



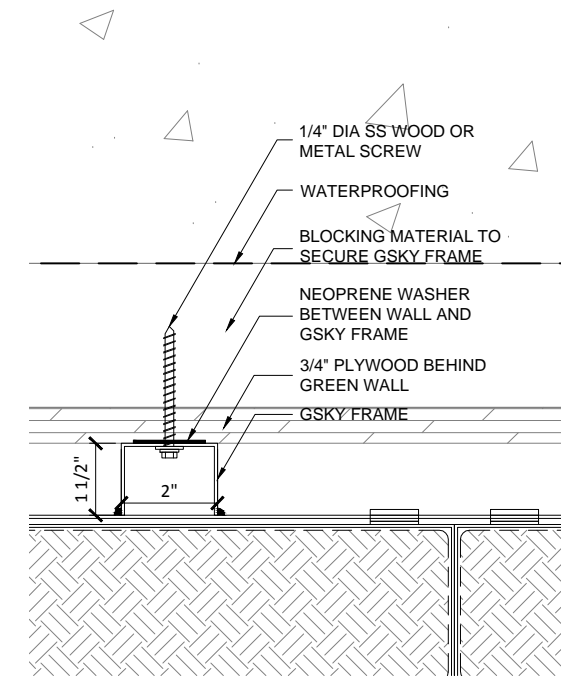
1 3D VIEW / EIFS WALL
SCALE 3/8" - 1'-0" (FILE # 6-p-1)



2 PLAN DETAIL / EIFS WALL
SCALE 3/4" - 1'-0" (FILE # 6-p-2)



3 SECTION DETAIL / EIFS WALL
SCALE 3/4" - 1'-0" (FILE # 6-p-3)



4 FASTENER DETAIL / EIFS WALL
SCALE 3" - 1'-0" (FILE # 6-p-4)