

DRAWING TITLE:

GSKY GREEN WALL PANELS

DOUBLE SIDED WALL STRUCTURE / INTERIOR OR EXTERIOR

3D VIEW
PLAN DETAIL



#704 - 318 HOMER ST
VANCOUVER, BC V6B 2V2
604-708-0611 ph 604-357-1315 fax
www.gsky.com

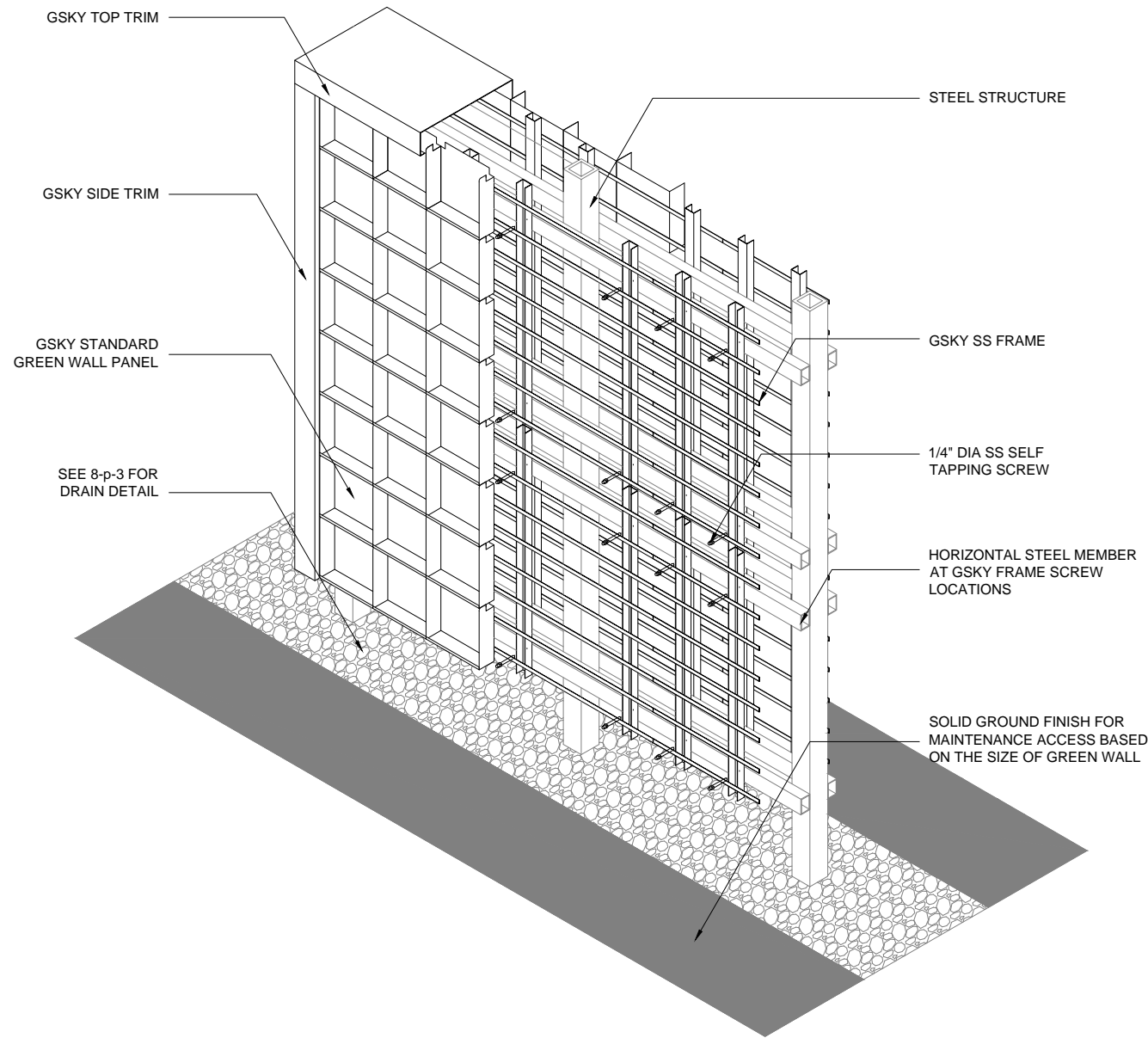
DESIGN NOTE:

- *STRUCTURE TYPE SHOWN ON 1-p, 2-p, 3-p AND 4-p CAN BE USED
- *STRUCTURE MUST SUPPORT 30 LB/SQ.FT SATURATED GSKY GREEN WALL SYSTEM
- *WALL SURFACE MUST BE SMOOTH
- *HORIZONTAL STEEL MEMBER MUST LINE UP WITH GSKY FRAME SCREW LOCATIONS; ASK GSKY FOR CONSULTANT
- *WATERPROOFING MAY BE REQUIRED (LIQUID OR SELF ADHESIVE TYPE IS RECOMMENDED)
- *ADEQUATE LIGHTING MUST BE DESIGNED AND INSTALLED (FOR INTERIOR GREEN WALL)
- *WALL MUST BE ACCESSIBLE FOR MAINTENANCE (LIFT ACCESS MAY BE REQUIRED)
- *TRIM WIDTH MAY INCREASE DEPENDING ON LOCATION OF ZONE VALVES; SEE 9-p, 10-p AND 11-p FOR DETAIL
- *GREEN WALL BELOW MUST TO BE CLEAR FOR MAINTENANCE LIFT ACCESS

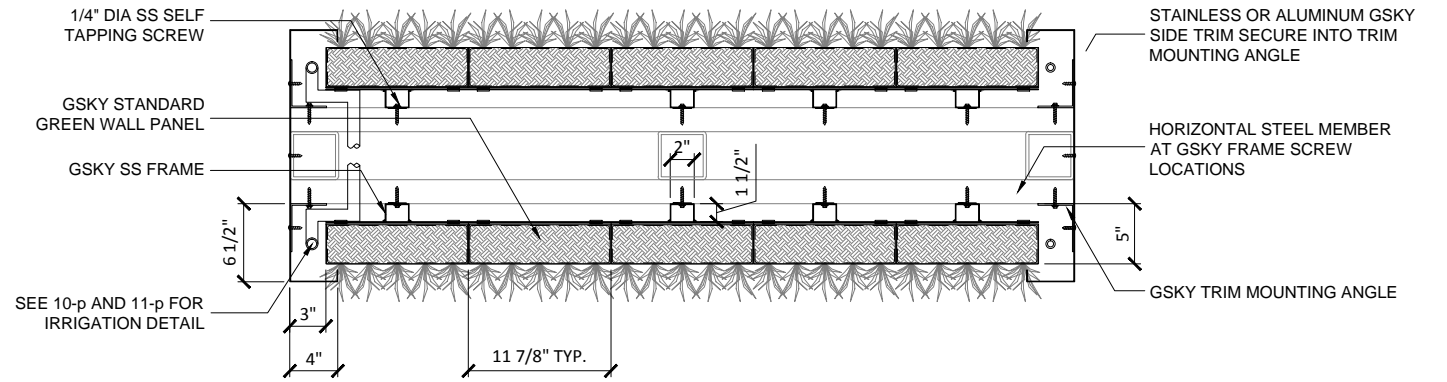
DRAWING #

5-p

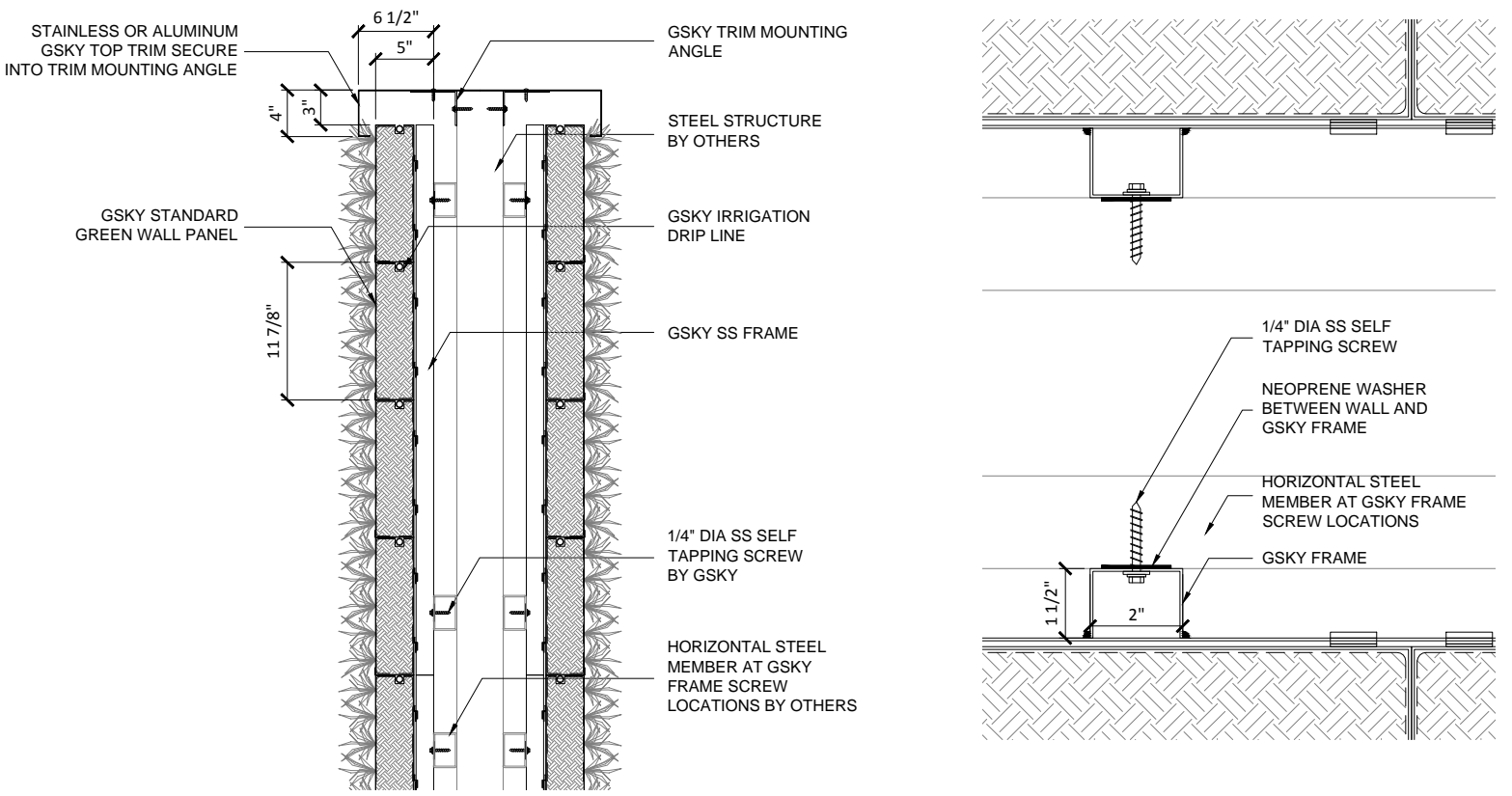
DATE: AUG 18, 2010 SCALE: AS NOTED
REV DATE: N/A PAPER SIZE: 11 x 17



1 3D VIEW / DOUBLE SIDED WALL
SCALE 3/8" - 1'-0" (FILE # 5-p-1)



2 PLAN DETAIL / DOUBLE SIDED WALL
SCALE 3/4" - 1'-0" (FILE # 5-p-2)



3 SECTION DETAIL / DOUBLE SIDED WALL
SCALE 3/4" - 1'-0" (FILE # 5-p-3)

4 FASTENER DETAIL / DOUBLE SIDED WALL
SCALE 3" - 1'-0" (FILE # 5-p-4)