

DRAWING TITLE:

# GSKY GREEN WALL PANELS

## EIFS WALL STRUCTURE / INTERIOR OR EXTERIOR

3D VIEW  
PLAN DETAIL



#704 - 318 HOMER ST  
VANCOUVER, BC V6B 2V2  
604-708-0611 ph 604-357-1315 fax  
www.gsky.com

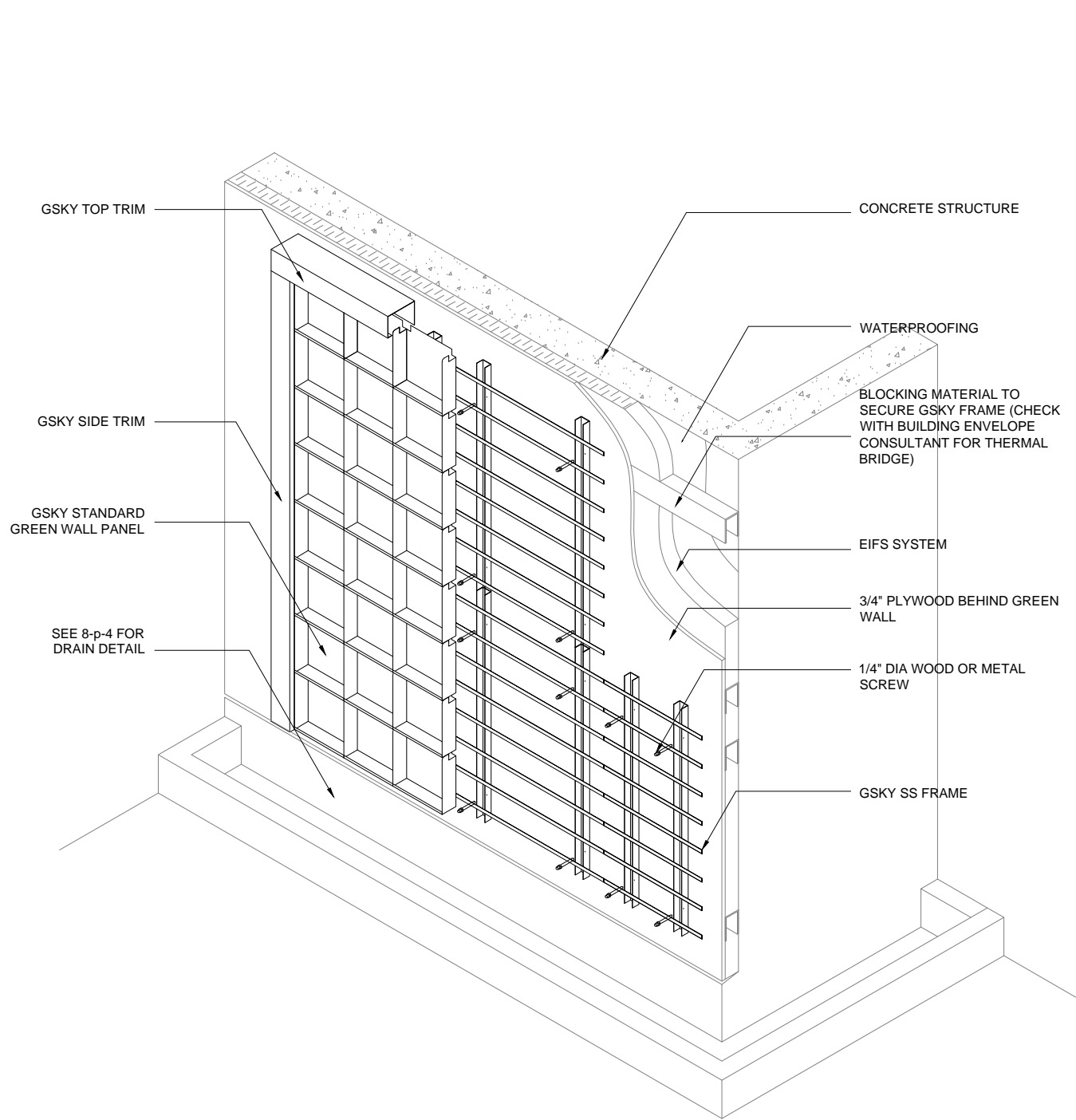
### DESIGN NOTE:

- \*STRUCTURE TYPE SHOWN ON 1-p, 2-p, 3-p AND 4-p CAN BE USED
- \*STRUCTURE MUST SUPPORT 30 LB/SQ.FT SATURATED GSKY GREEN WALL SYSTEM
- \*WALL SURFACE MUST BE SMOOTH
- \*3/4" PLYWOOD MUST BE INSTALLED BEHIND GREEN WALL AREA
- \*BLOCKING AT GSKY FRAME SCREW LOCATIONS MUST BE INSTALLED; CHECK WITH ENVELOPE CONSULTANT FOR THERMAL BRIDGE
- \*WATERPROOFING IS REQUIRED (LIQUID OR SELF ADHESIVE TYPE IS RECOMMENDED)
- \*ADEQUATE LIGHTING MUST BE DESIGNED AND INSTALLED (FOR INTERIOR GREEN WALL)
- \*WALL MUST BE ACCESSIBLE FOR MAINTENANCE (LIFT ACCESS MAY BE REQUIRED)
- \*TRIM WIDTH MAY INCREASE DEPENDING ON LOCATION OF ZONE VALVES; SEE 9-p, 10-p AND 11-p FOR DETAIL
- \*GREEN WALL BELOW MUST TO BE CLEAR FOR MAINTENANCE LIFT ACCESS

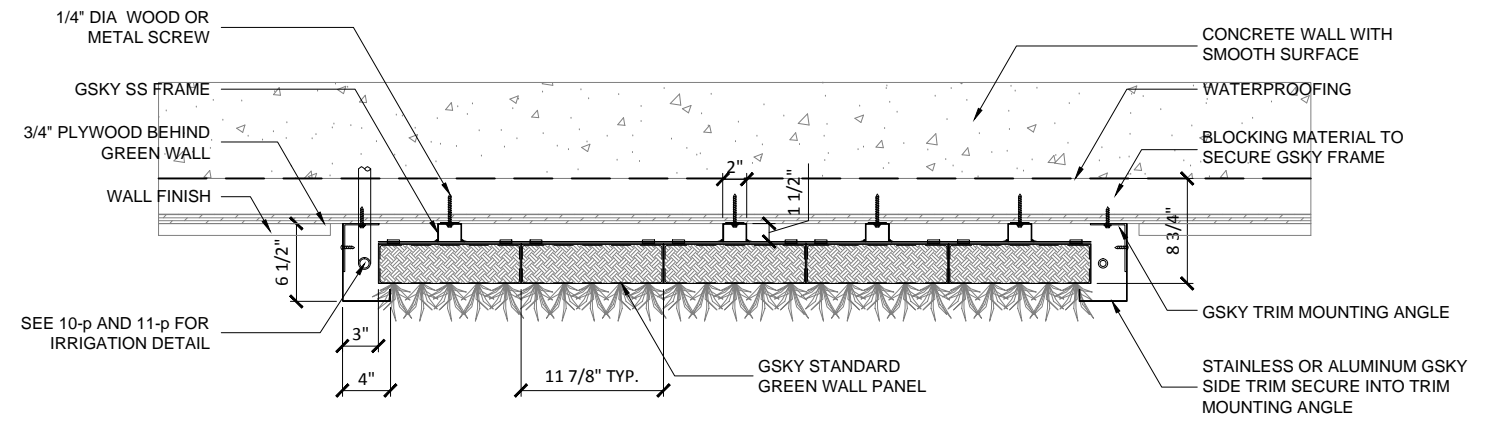
DRAWING #

# 6-p

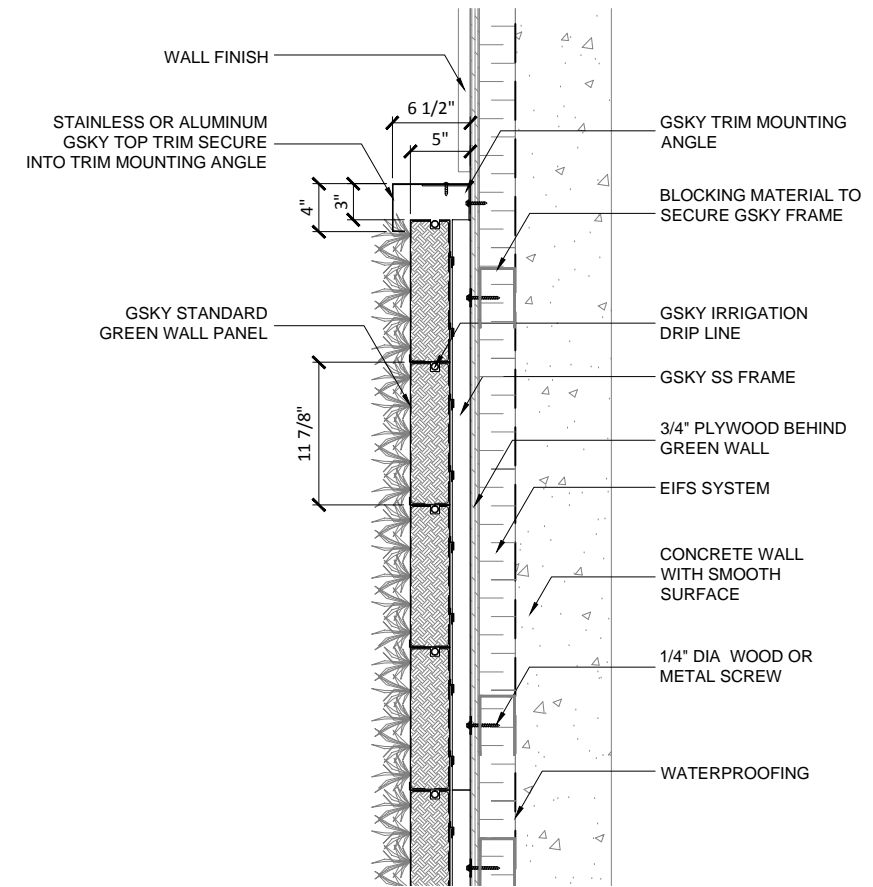
DATE: AUG 18, 2010 SCALE: AS NOTED  
REV DATE: N/A PAPER SIZE: 11 x 17



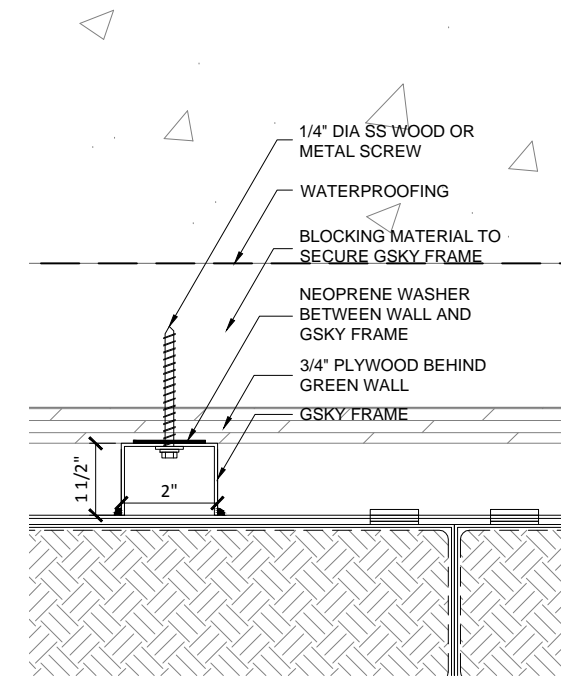
**1** 3D VIEW / EIFS WALL  
SCALE 3/8" - 1'-0" (FILE # 6-p-1)



**2** PLAN DETAIL / EIFS WALL  
SCALE 3/4" - 1'-0" (FILE # 6-p-2)



**3** SECTION DETAIL / EIFS WALL  
SCALE 3/4" - 1'-0" (FILE # 6-p-3)



**4** FASTENER DETAIL / EIFS WALL  
SCALE 3" - 1'-0" (FILE # 6-p-4)