

DRAWING TITLE:

# GSKY GREEN WALL PANELS

DOUBLE SIDED WALL STRUCTURE / INTERIOR OR EXTERIOR  
3D VIEW  
PLAN DETAIL



#704 - 318 HOMER ST  
VANCOUVER, BC V6B 2V2  
604-708-0611 ph 604-357-1315 fax  
www.gsky.com

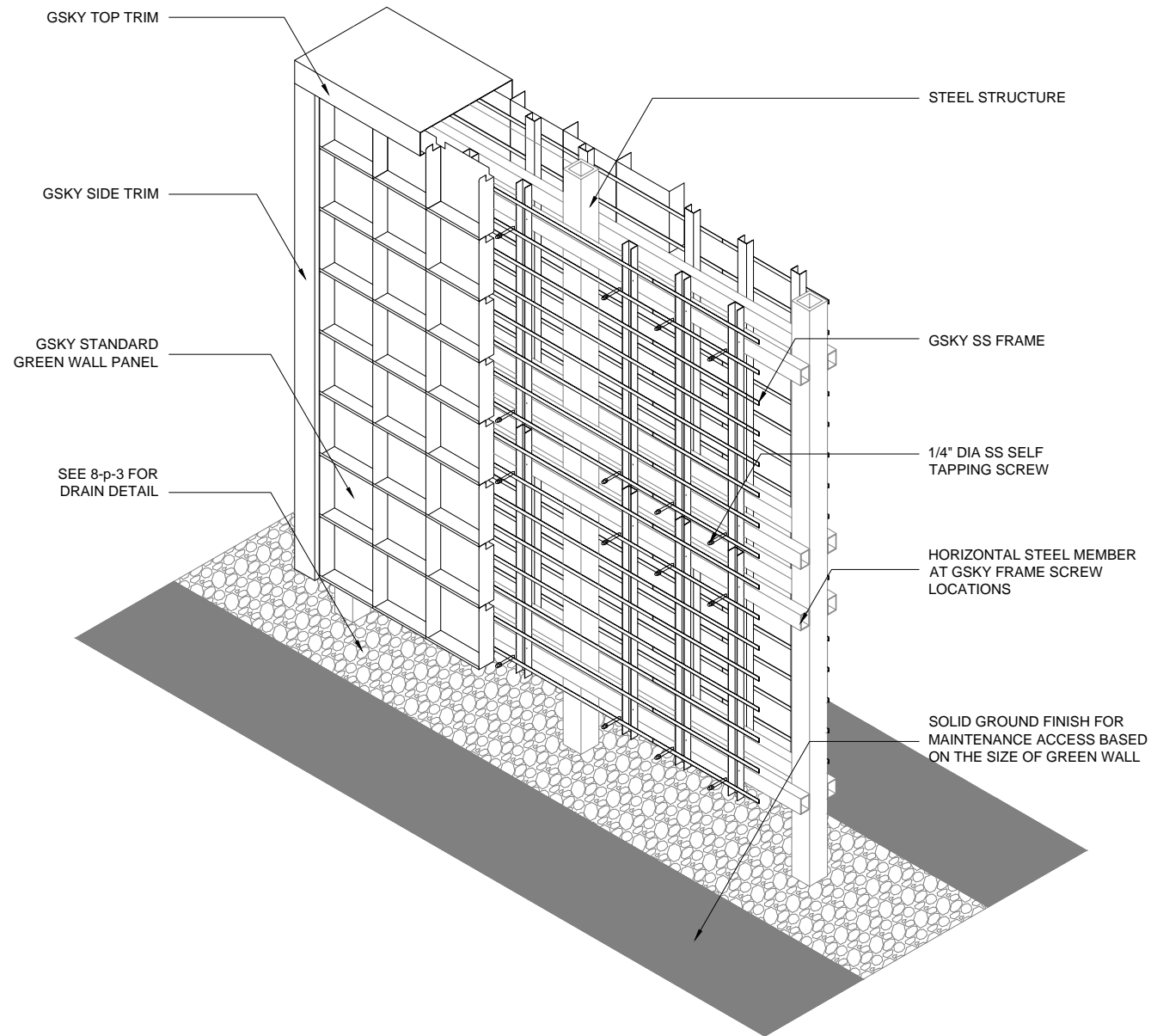
DESIGN NOTE:

- \*STRUCTURE TYPE SHOWN ON 1-p, 2-p, 3-p AND 4-p CAN BE USED
- \*STRUCTURE MUST SUPPORT 30 LB/SQ.FT SATURATED GSKY GREEN WALL SYSTEM
- \*WALL SURFACE MUST BE SMOOTH
- \*HORIZONTAL STEEL MEMBER MUST LINE UP WITH GSKY FRAME SCREW LOCATIONS; ASK GSKY FOR CONSULTANT
- \*WATERPROOFING MAY BE REQUIRED (LIQUID OR SELF ADHESIVE TYPE IS RECOMMENDED)
- \*ADEQUATE LIGHTING MUST BE DESIGNED AND INSTALLED (FOR INTERIOR GREEN WALL)
- \*WALL MUST BE ACCESSIBLE FOR MAINTENANCE (LIFT ACCESS MAY BE REQUIRED)
- \*TRIM WIDTH MAY INCREASE DEPENDING ON LOCATION OF ZONE VALVES; SEE 9-p, 10-p AND 11-p FOR DETAIL
- \*GREEN WALL BELOW MUST TO BE CLEAR FOR MAINTENANCE LIFT ACCESS

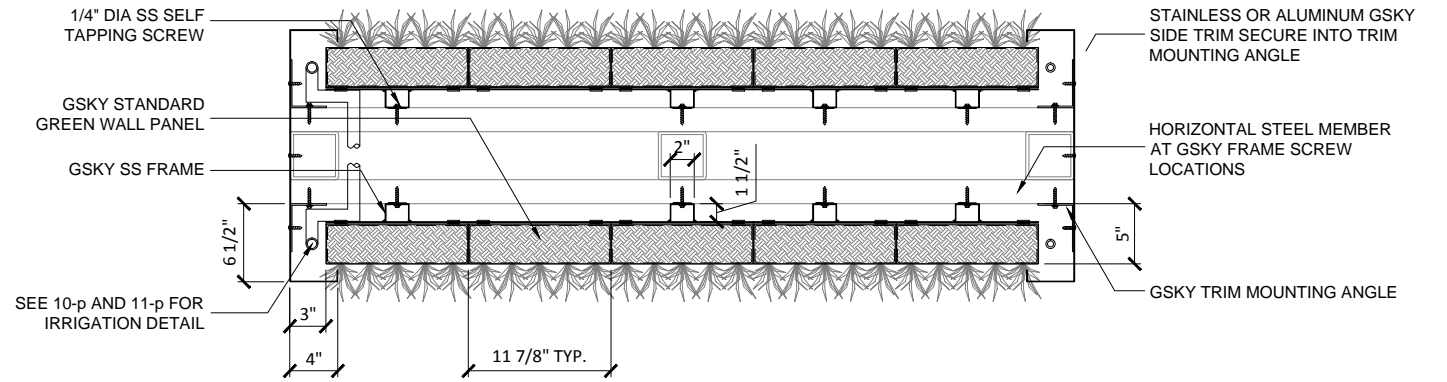
DRAWING #

5-p

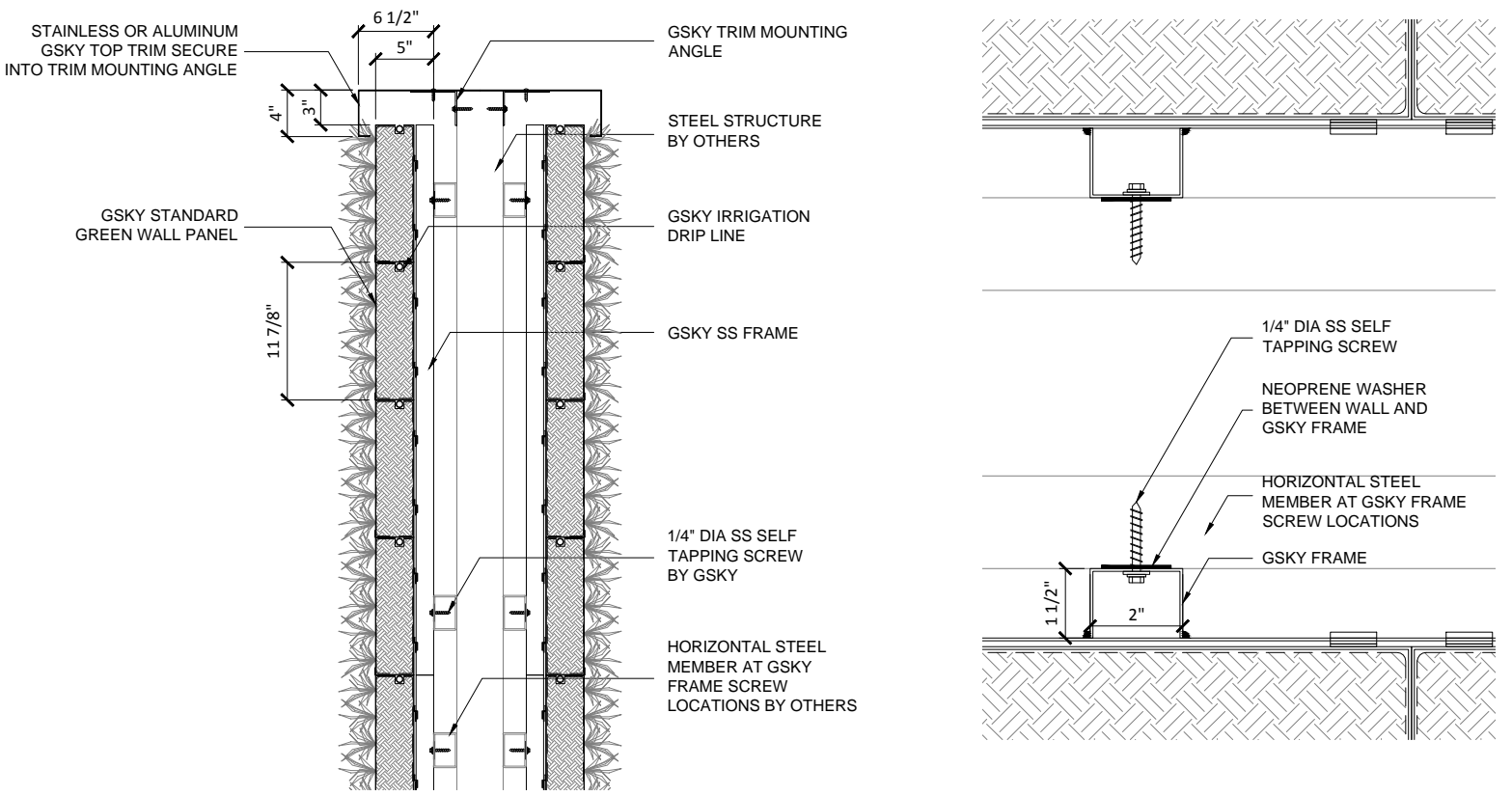
DATE: AUG 18, 2010 SCALE: AS NOTED  
REV DATE: N/A PAPER SIZE: 11 x 17



1 3D VIEW / DOUBLE SIDED WALL  
SCALE 3/8" - 1'-0" (FILE # 5-p-1)



2 PLAN DETAIL / DOUBLE SIDED WALL  
SCALE 3/4" - 1'-0" (FILE # 5-p-2)



3 SECTION DETAIL / DOUBLE SIDED WALL  
SCALE 3/4" - 1'-0" (FILE # 5-p-3)

4 FASTENER DETAIL / DOUBLE SIDED WALL  
SCALE 3" - 1'-0" (FILE # 5-p-4)