

DRAWING TITLE:

GSKY GREEN WALL PANELS

STUD WALL STRUCTURE / INTERIOR OR EXTERIOR

3D VIEW
PLAN DETAIL

SECTION DETAIL
FASTENER DETAIL



#704 - 318 HOMER ST
VANCOUVER, BC V6B 2V2
604-708-0611 ph 604-357-1315 fax
www.gsky.com

DRAWING #

3-p

DATE: AUG 18, 2010

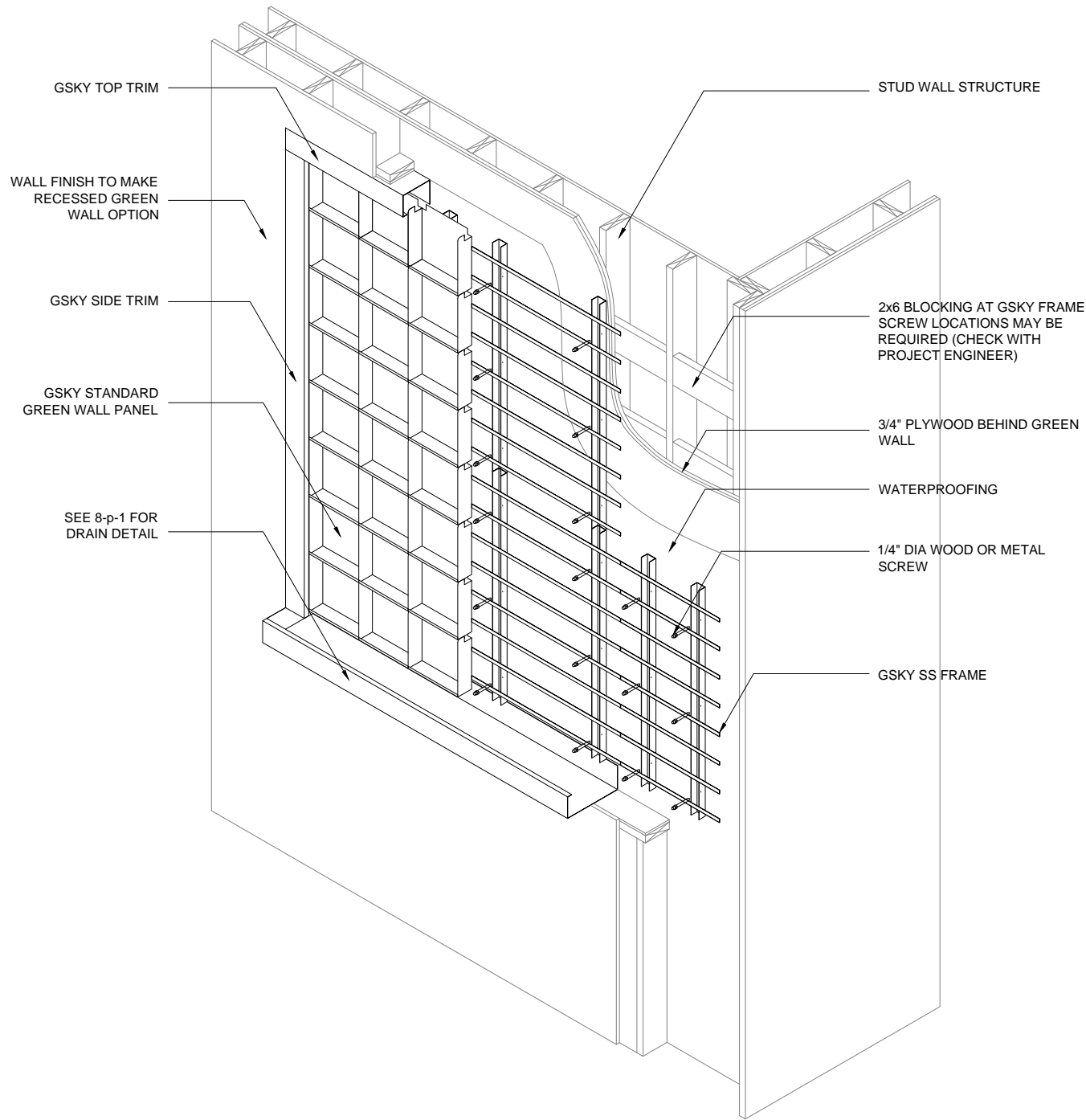
SCALE: AS NOTED

REV DATE: N/A

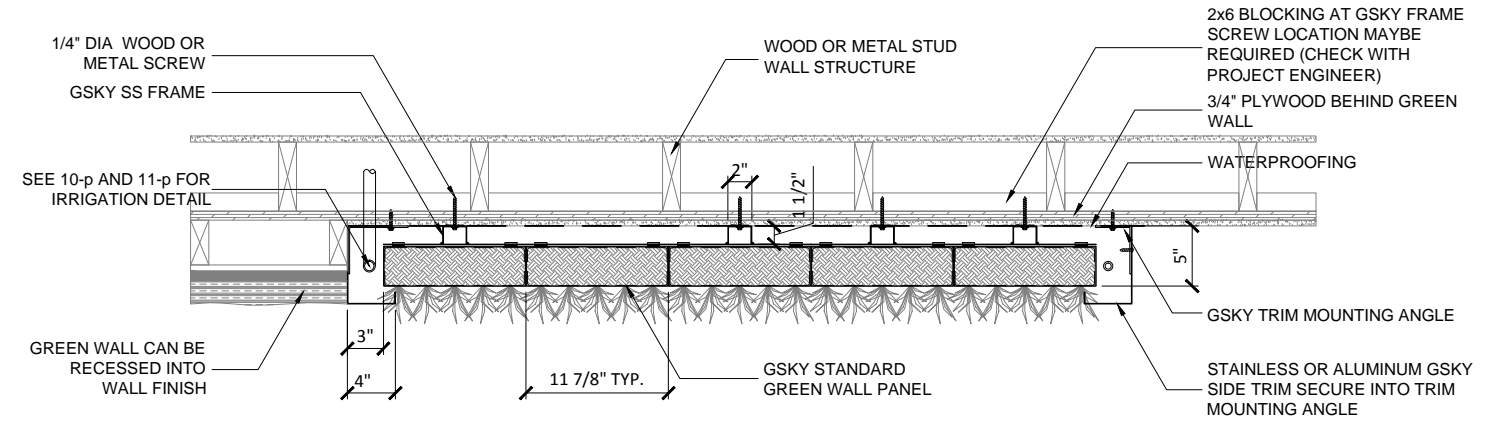
PAPER SIZE: 11 x 17

DESIGN NOTE:

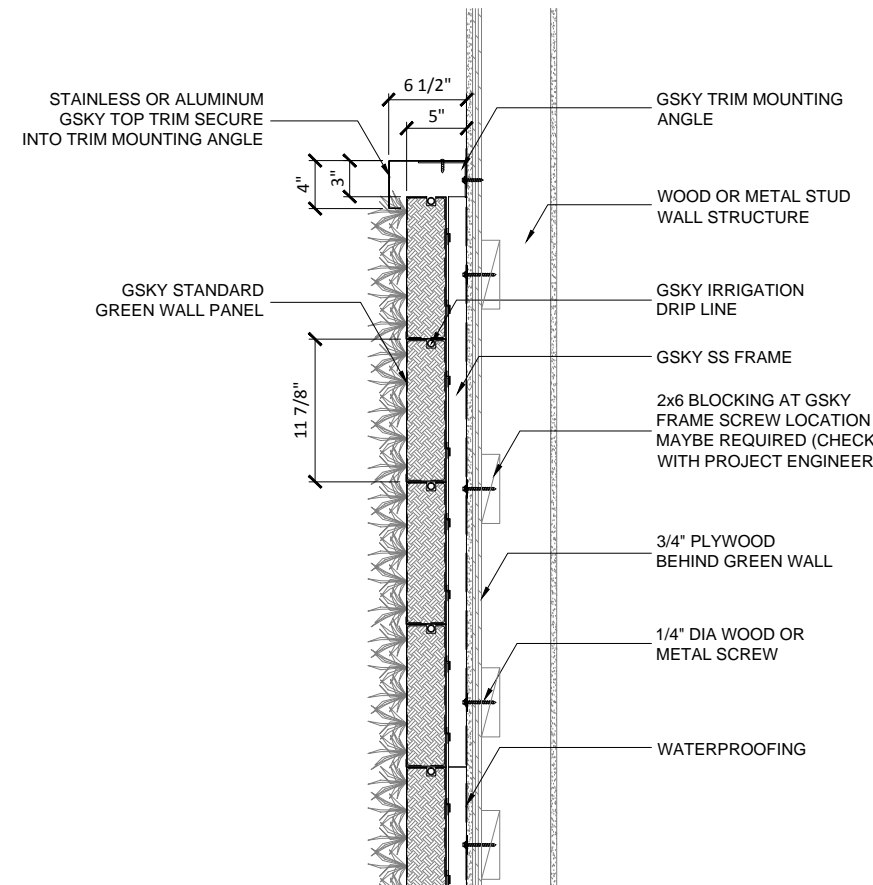
- *STRUCTURE MUST SUPPORT 30 LB/SQ.FT SATURATED GSKY GREEN WALL SYSTEM
- *WALL SURFACE MUST BE SMOOTH
- *3/4" PLYWOOD MUST BE INSTALLED BEHIND GREEN WALL AREA
- *BLOCKING AT GSKY FRAME SCREW LOCATIONS MAY BE REQUIRED CHECK WITH PROJECT ENGINEER
- *STUD LOCATION MUST BE IDENTIFIED ON THE AS-BUILT DRAWING
- *GREEN WALL CAN BE RECESSED AT INDOOR WALL (NOTE THAT GUTTER WILL EXTEND OUT; SEE 8-p-1 FOR DETAIL)
- *WATERPROOFING IS REQUIRED TO BE APPLIED (LIQUID OR SELF ADHESIVE TYPE IS RECOMMENDED)
- *ADEQUATE LIGHTING MUST BE DESIGNED AND INSTALLED (FOR INTERIOR GREEN WALL)
- *WALL MUST BE ACCESSIBLE FOR MAINTENANCE (LIFT ACCESS MAY BE REQUIRED)
- *TRIM WIDTH MAY INCREASE DEPENDING ON LOCATION OF ZONE VALVES; SEE 9-p, 10-p AND 11-p FOR DETAIL
- *GREEN WALL BELOW MUST TO BE CLEAR FOR MAINTENANCE LIFT ACCESS



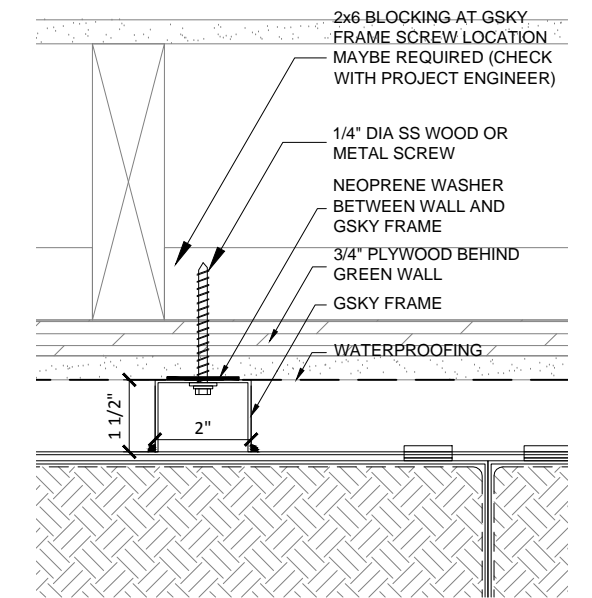
1 3D VIEW / STUD WALL
SCALE 3/8" - 1'-0" (FILE # 3-p-1)



2 PLAN DETAIL / STUD WALL
SCALE 3/4" - 1'-0" (FILE # 3-p-2)



3 SECTION DETAIL / STUD WALL
SCALE 3/4" - 1'-0" (FILE # 3-p-3)



4 FASTENER DETAIL / STUD WALL
SCALE 3" - 1'-0" (FILE # 3-p-4)