

DRAWING TITLE:

# GSKY GREEN WALL PANELS

## CMU WALL STRUCTURE / INTERIOR OR EXTERIOR

3D VIEW  
PLAN DETAIL

SECTION DETAIL  
FASTENER DETAIL



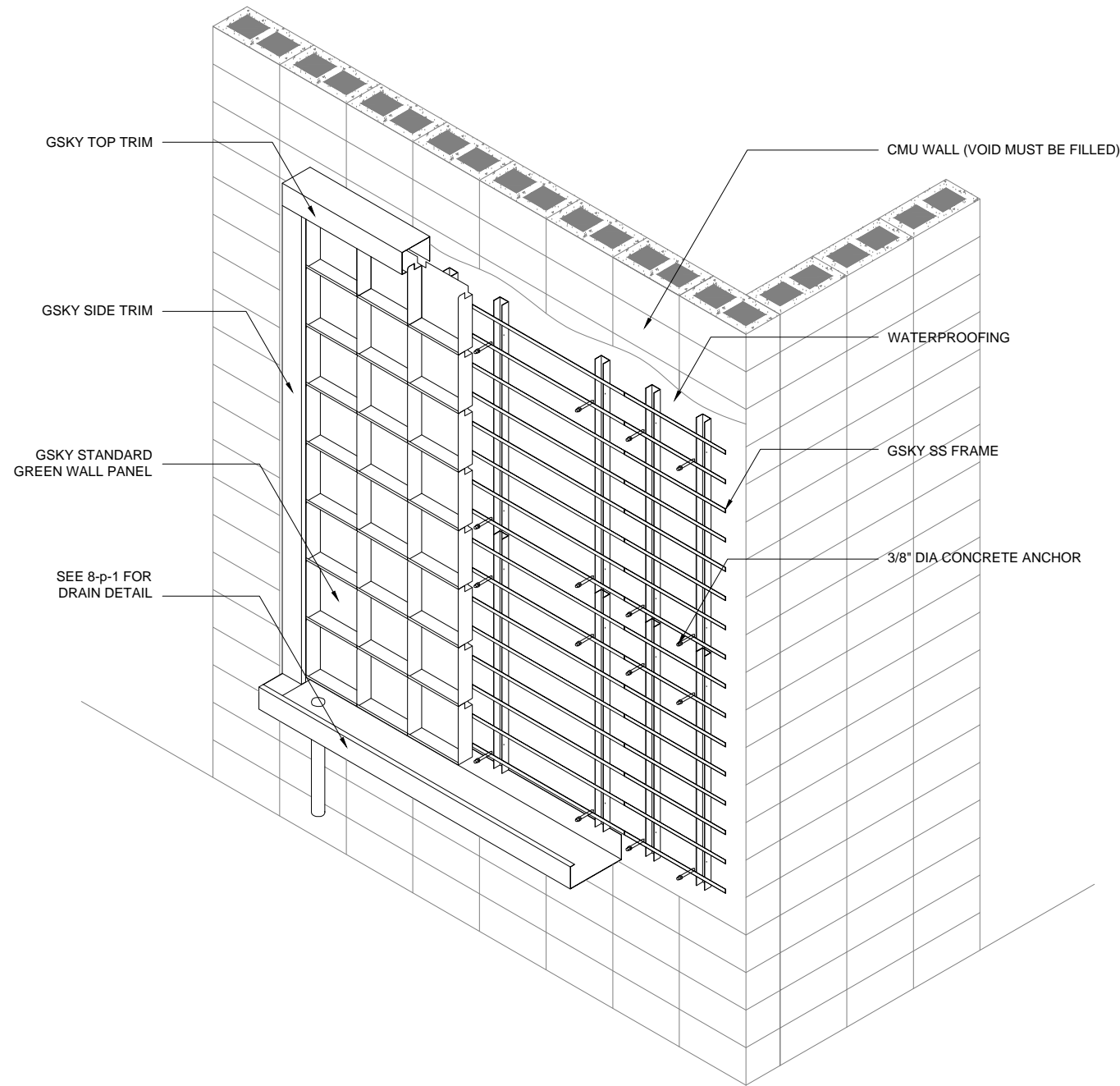
#704 - 318 HOMER ST  
VANCOUVER, BC V6B 2V2  
604-708-0611 ph 604-357-1315 fax  
www.gsky.com

DRAWING #

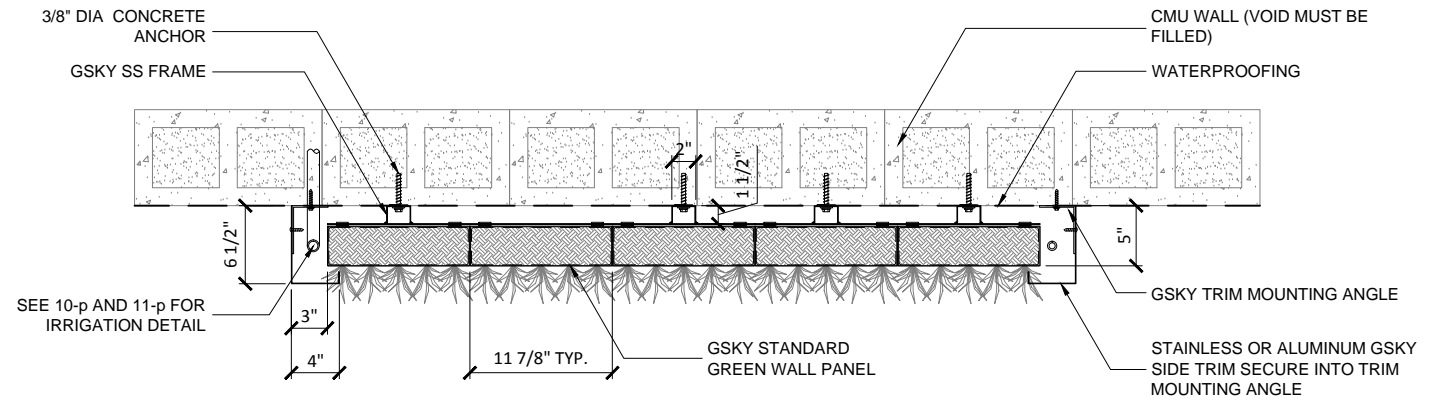
2-p

DATE: AUG 18, 2010 SCALE: AS NOTED  
REV DATE: N/A PAPER SIZE: 11 x 17

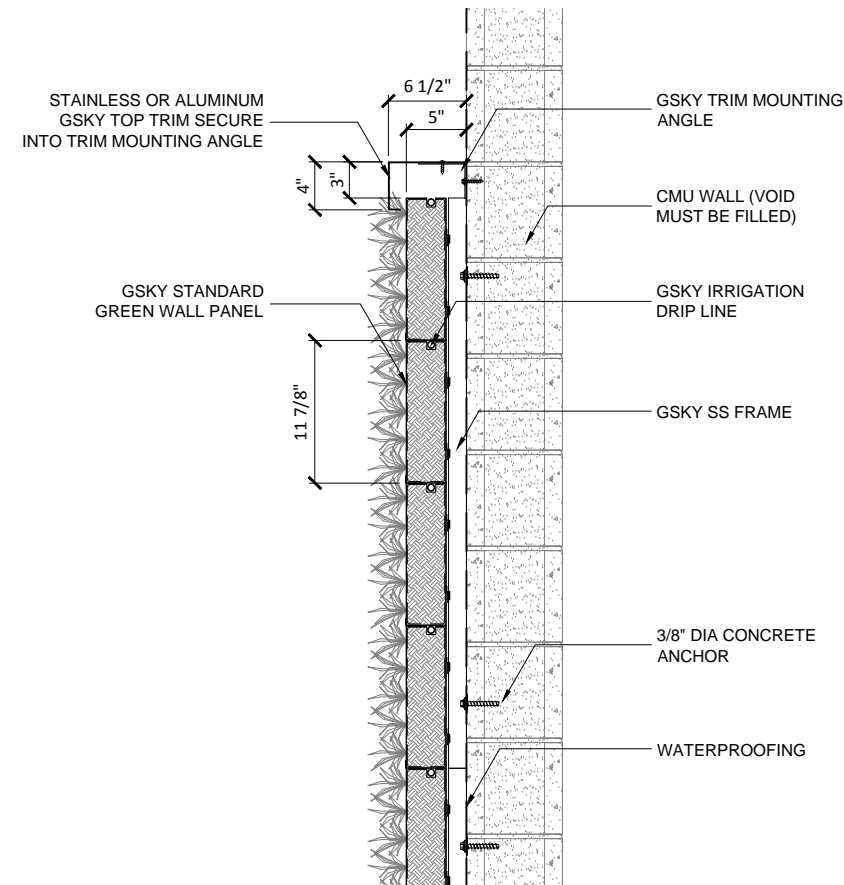
DESIGN NOTE:  
\*STRUCTURE MUST SUPPORT 30 LB/SQ.FT SATURATED GSKY GREEN WALL SYSTEM  
\*WALL SURFACE MUST BE SMOOTH  
\*CMU VOID SPACE MUST BE FILLED WITH MORTAR FOR ANCHORING  
\*WATERPROOFING IS REQUIRED TO BE APPLIED (LIQUID OR SELF ADHESIVE TYPE IS RECOMMENDED)  
\*ADEQUATE LIGHTING MUST BE DESIGNED AND INSTALLED (FOR INTERIOR GREEN WALL)  
\*WALL MUST BE ACCESSIBLE FOR MAINTENANCE (LIFT ACCESS MAY BE REQUIRED)  
\*EMBEDDED PIPE OR CONDUIT LOCATIONS MUST BE INDICATED TO GSKY  
\*TRIM WIDTH MAY INCREASE DEPENDING ON LOCATION OF ZONE VALVES; SEE 9-p, 10-p AND 11-p FOR DETAIL  
\*GREEN WALL BELOW MUST TO BE CLEAR FOR MAINTENANCE LIFT ACCESS



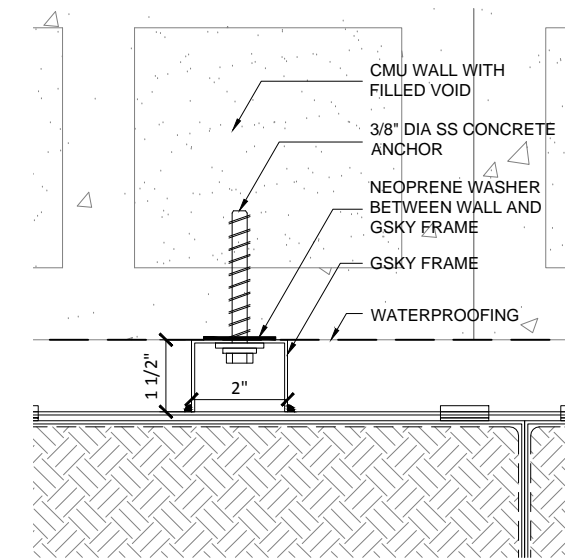
1 3D VIEW / CMU WALL  
SCALE 3/8" - 1'-0" (FILE # 2-p-1)



2 PLAN DETAIL / CMU WALL  
SCALE 3/4" - 1'-0" (FILE # 2-p-2)



3 SECTION DETAIL / CMU WALL  
SCALE 3/4" - 1'-0" (FILE # 2-p-3)



4 FASTENER DETAIL / CMU WALL  
SCALE 3" - 1'-0" (FILE # 2-p-4)