

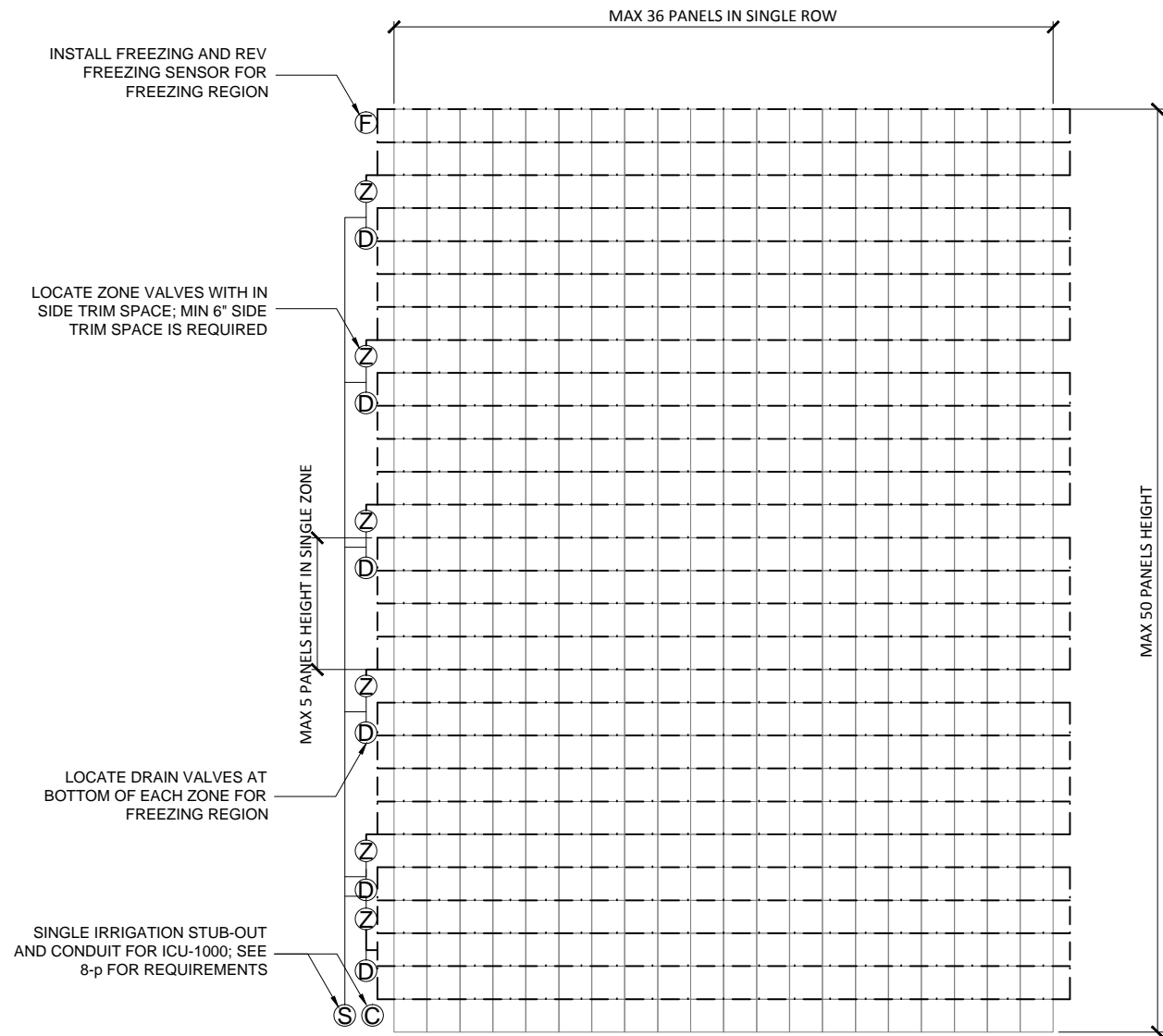
DRAWING TITLE:  
**GSKY GREEN WALL PANELS**  
**IRRIGATION LAYOUT 2**  
 IRRIGATION LAYOUT FOR ICU-1000 -  
 ZONE VALVE DETAIL -



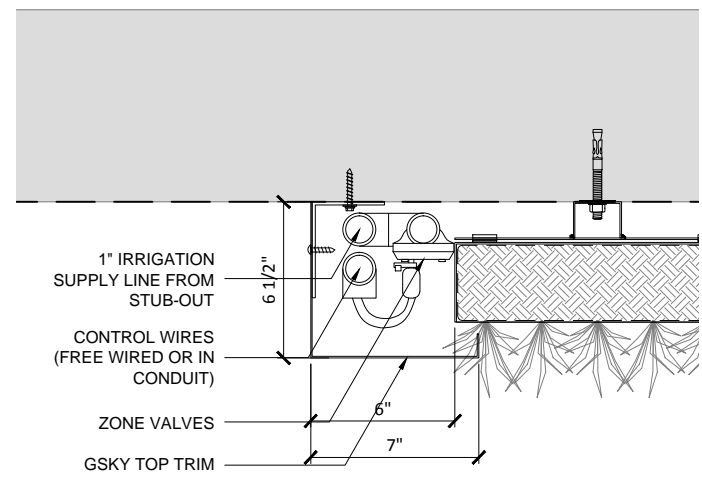
#704 - 318 HOMER ST  
 VANCOUVER, BC V6B 2V2  
 604-708-0611 ph 604-357-1315 fax  
 www.gsky.com

DRAWING # **11-p**      DATE: AUG 18, 2010      SCALE: AS NOTED  
 REV DATE: N/A      PAPER SIZE: 11 x 17

MAX. 36 PANELS IN EACH CONTINUOUS ROW  
 MAX. 5 PANELS HEIGHT IN ONE ZONE  
 MAIN IRRIGATION SUPPLY LINE CAN BE COPPER, PEX OR PVC TO MEET  
 LOCAL CODE (BY PLUMBER)  
 STUB-OUT SHOULD BE INSTALLED WITH FEMALE PIPE THREAD FITTINGS



**1** IRRIGATION LAYOUT FOR ICU-1000 / ZONE VALVES IN SIDE TRIM  
 SCALE NTS (FILE # 11-p-1)



**2** ZONE VALVE DETAIL FOR ICU-1000 IN TOP TRIM  
 SCALE 1-1/2" = 1'-0" (FILE # 11-p-2)