

DRAWING TITLE:

GSKY GREEN WALL PANELS

CONCRETE WALL STRUCTURE / INTERIOR OR EXTERIOR
3D VIEW
PLAN DETAIL



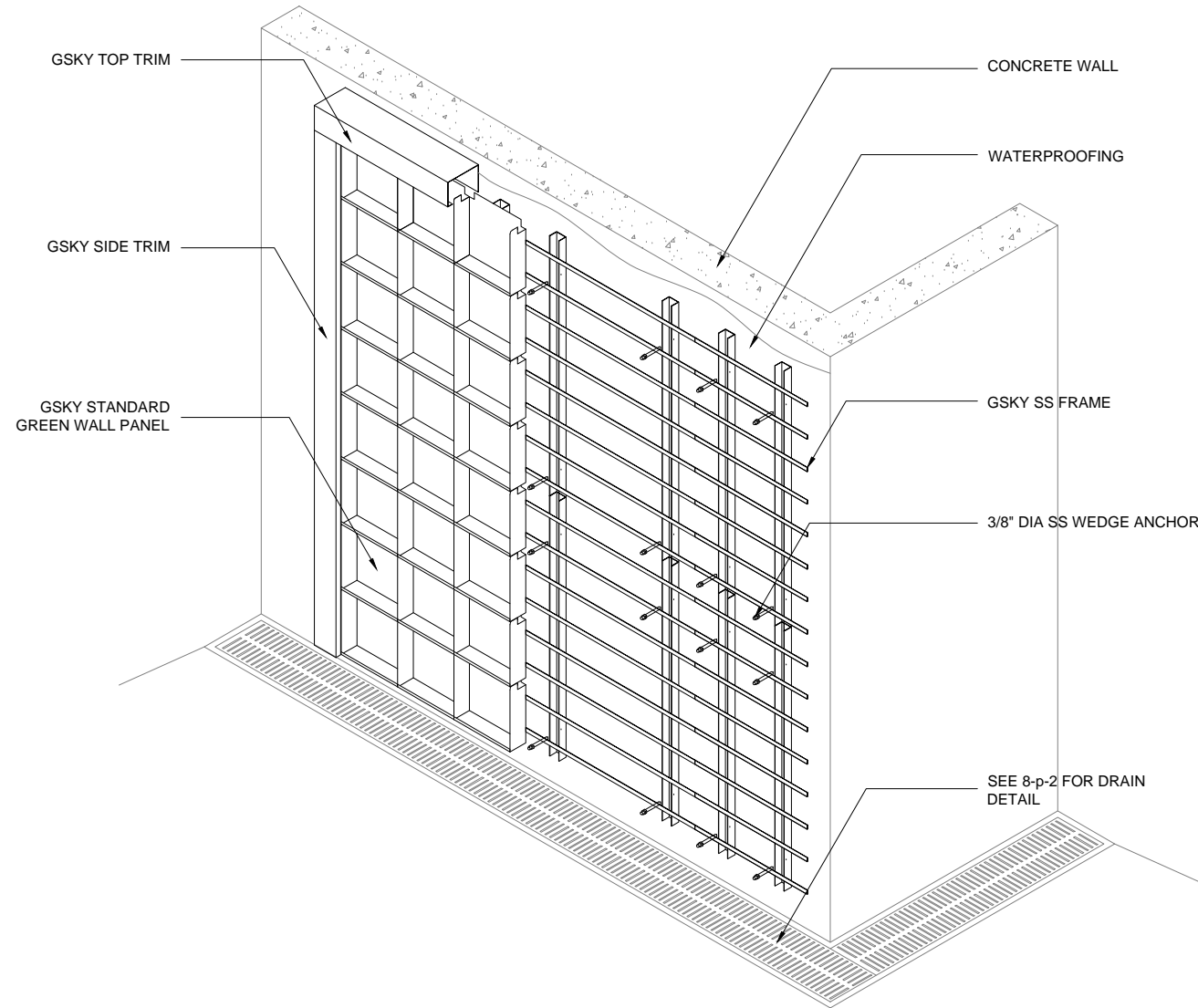
#704 - 318 HOMER ST
VANCOUVER, BC V6B 2V2
604-708-0611 ph 604-357-1315 fax
www.gsky.com

DESIGN NOTE:
*STRUCTURE MUST SUPPORT 30 LB/SQ.FT SATURATED GSKY GREEN WALL SYSTEM
*WALL SURFACE MUST BE SMOOTH
*WATERPROOFING IS REQUIRED TO BE APPLIED (LIQUID OR SELF ADHESIVE TYPE IS RECOMMENDED)
*ADEQUATE LIGHTING MUST BE DESIGNED AND INSTALLED (FOR INTERIOR GREEN WALL)
*WALL MUST BE ACCESSIBLE FOR MAINTENANCE (LIFT ACCESS MAY BE REQUIRED)
*EMBEDDED PIPE OR CONDUIT LOCATIONS MUST BE INDICATED TO GSKY
*TRIM WIDTH MAY INCREASE DEPENDING ON LOCATION OF ZONE VALVES; SEE 9-p, 10-p AND 11-p FOR DETAIL
*GREEN WALL BELOW MUST TO BE CLEAR FOR MAINTENANCE LIFT ACCESS

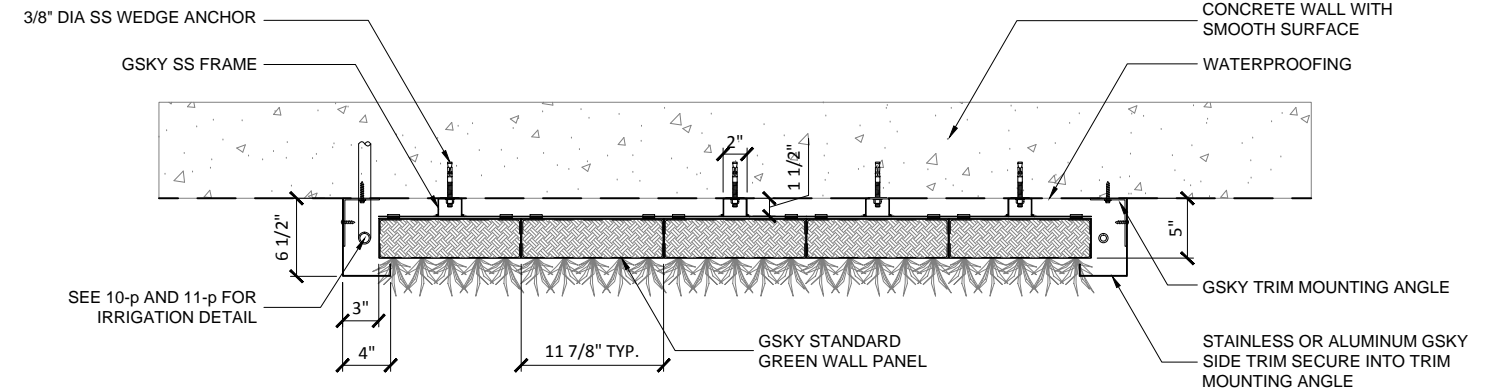
DRAWING #

1-p

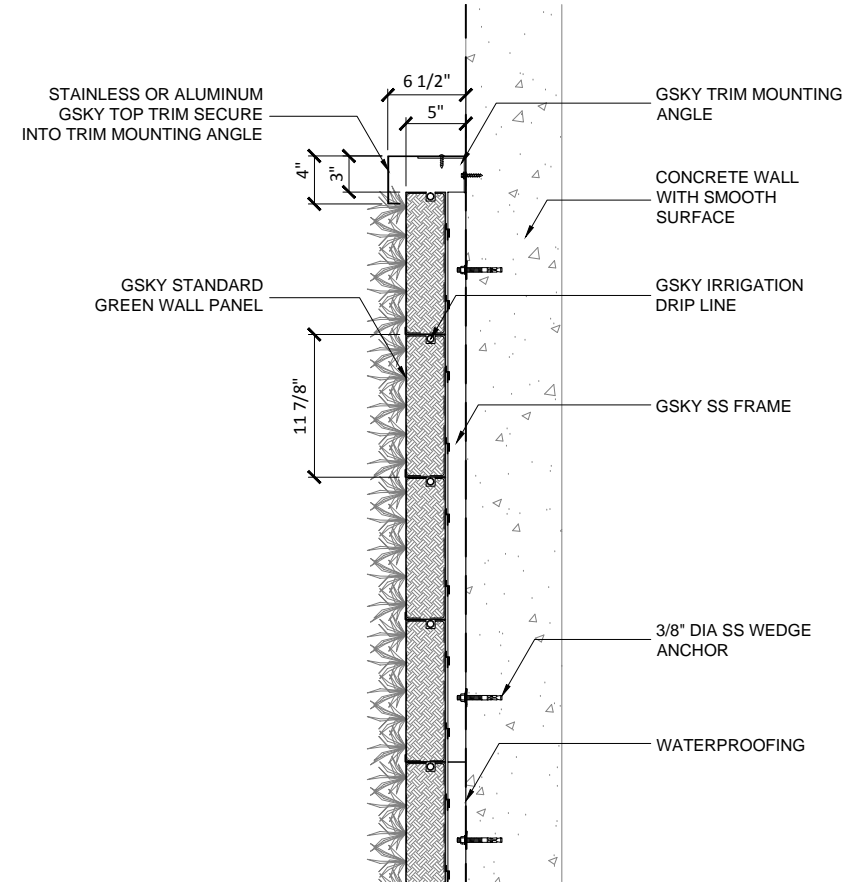
DATE: AUG 18, 2010 SCALE: AS NOTED
REV DATE: N/A PAPER SIZE: 11 x 17



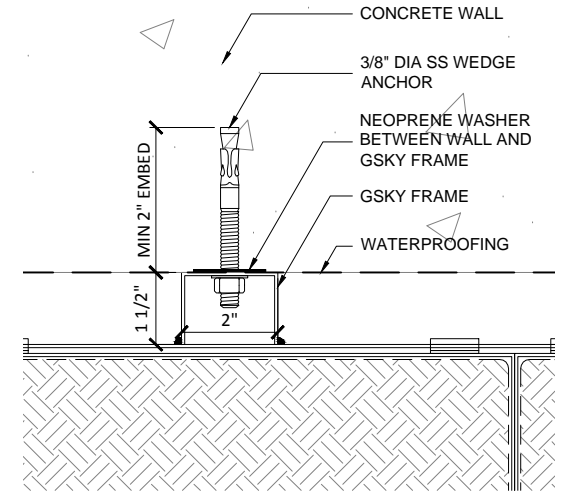
1 3D VIEW / CONCRETE WALL
SCALE 3/8" - 1'-0" (FILE # 1-p-1)



2 PLAN DETAIL / CONCRETE WALL
SCALE 3/4" - 1'-0" (FILE # 1-p-2)



3 SECTION DETAIL / CONCRETE WALL
SCALE 3/4" - 1'-0" (FILE # 1-p-3)



4 FASTENER DETAIL / CONCRETE WALL
SCALE 3" - 1'-0" (FILE # 1-p-4)

DRAWING TITLE:

GSKY GREEN WALL PANELS

CMU WALL STRUCTURE / INTERIOR OR EXTERIOR

3D VIEW
PLAN DETAIL

SECTION DETAIL
FASTENER DETAIL



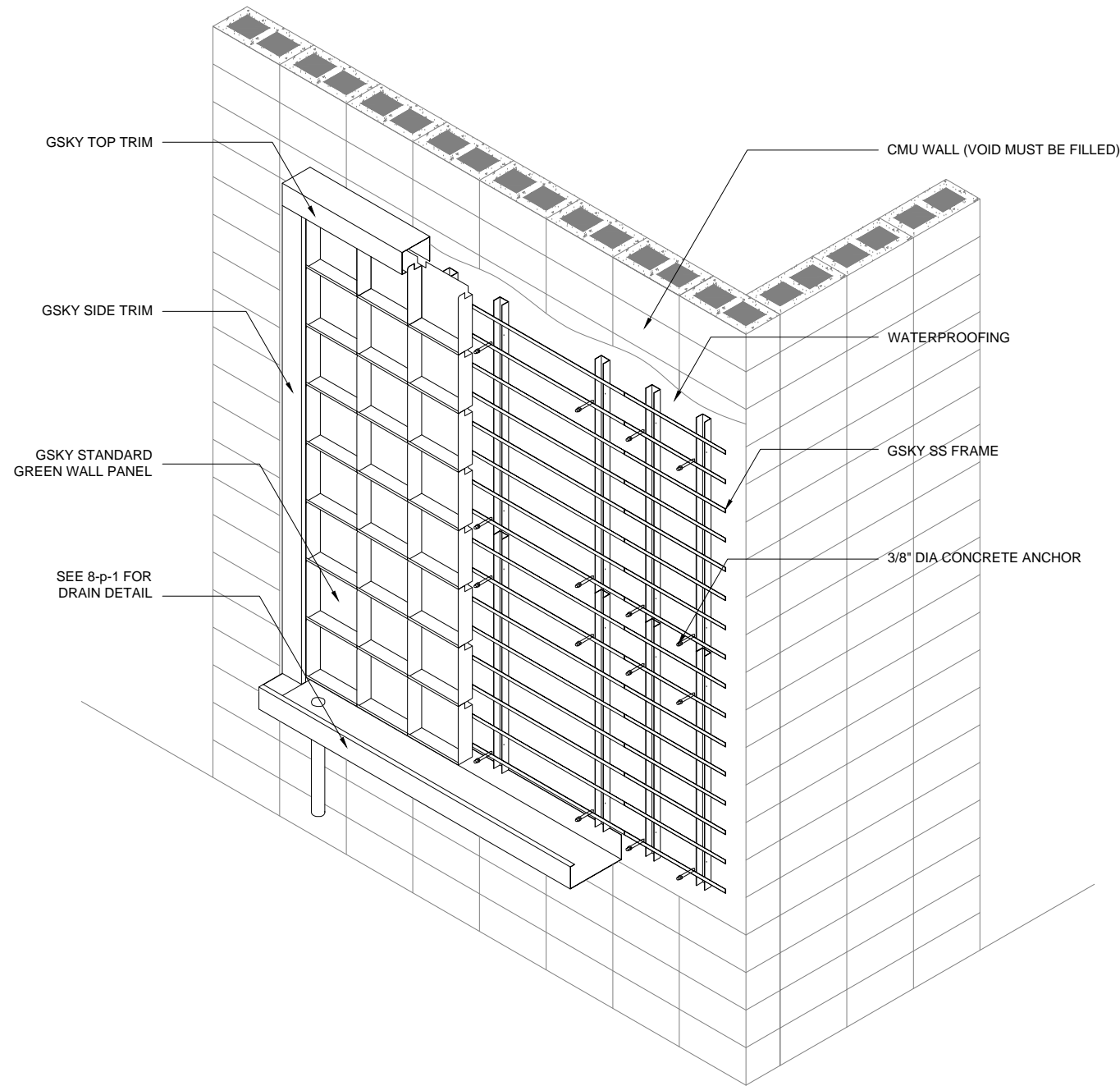
#704 - 318 HOMER ST
VANCOUVER, BC V6B 2V2
604-708-0611 ph 604-357-1315 fax
www.gsky.com

DRAWING #

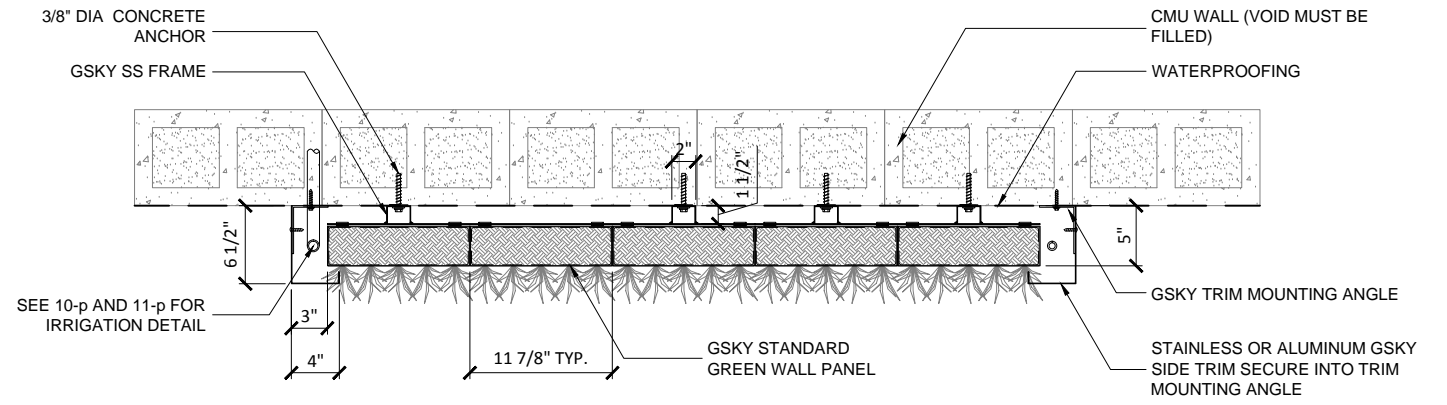
2-p

DATE: AUG 18, 2010 SCALE: AS NOTED
REV DATE: N/A PAPER SIZE: 11 x 17

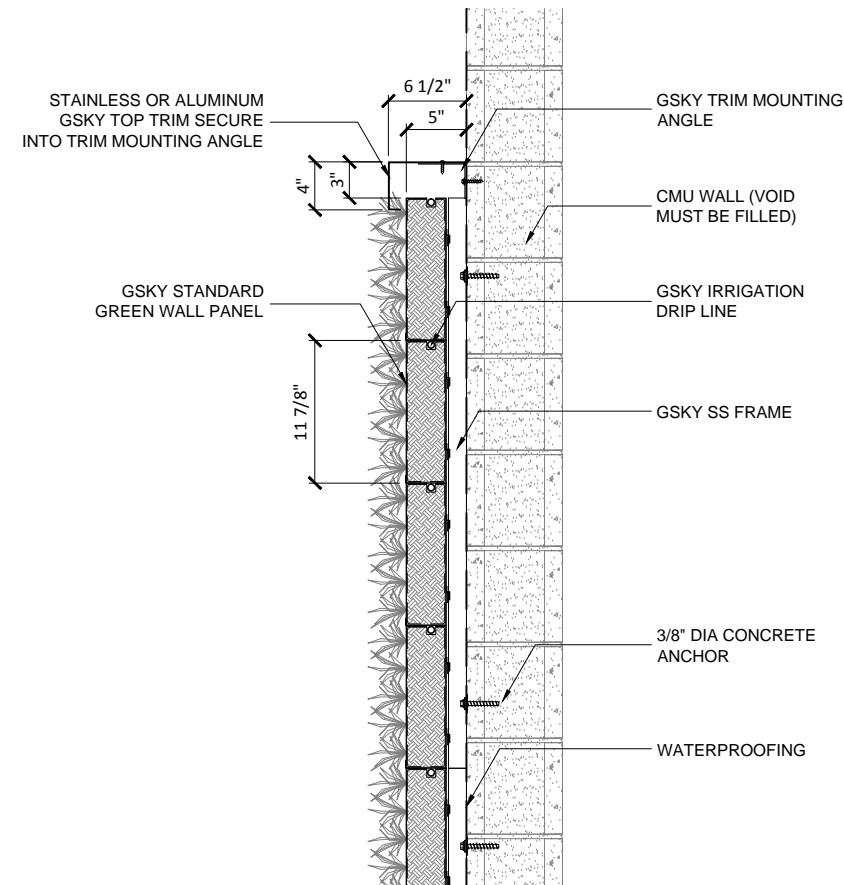
DESIGN NOTE:
*STRUCTURE MUST SUPPORT 30 LB/SQ.FT SATURATED GSKY GREEN WALL SYSTEM
*WALL SURFACE MUST BE SMOOTH
*CMU VOID SPACE MUST BE FILLED WITH MORTAR FOR ANCHORING
*WATERPROOFING IS REQUIRED TO BE APPLIED (LIQUID OR SELF ADHESIVE TYPE IS RECOMMENDED)
*ADEQUATE LIGHTING MUST BE DESIGNED AND INSTALLED (FOR INTERIOR GREEN WALL)
*WALL MUST BE ACCESSIBLE FOR MAINTENANCE (LIFT ACCESS MAY BE REQUIRED)
*EMBEDDED PIPE OR CONDUIT LOCATIONS MUST BE INDICATED TO GSKY
*TRIM WIDTH MAY INCREASE DEPENDING ON LOCATION OF ZONE VALVES; SEE 9-p, 10-p AND 11-p FOR DETAIL
*GREEN WALL BELOW MUST TO BE CLEAR FOR MAINTENANCE LIFT ACCESS



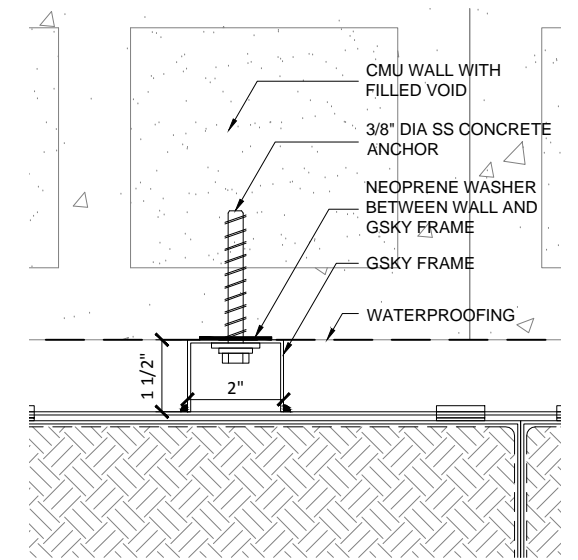
1 3D VIEW / CMU WALL
SCALE 3/8" - 1'-0" (FILE # 2-p-1)



2 PLAN DETAIL / CMU WALL
SCALE 3/4" - 1'-0" (FILE # 2-p-2)



3 SECTION DETAIL / CMU WALL
SCALE 3/4" - 1'-0" (FILE # 2-p-3)



4 FASTENER DETAIL / CMU WALL
SCALE 3" - 1'-0" (FILE # 2-p-4)

DRAWING TITLE:

GSKY GREEN WALL PANELS

STUD WALL STRUCTURE / INTERIOR OR EXTERIOR

3D VIEW
PLAN DETAIL

SECTION DETAIL
FASTENER DETAIL



#704 - 318 HOMER ST
VANCOUVER, BC V6B 2V2
604-708-0611 ph 604-357-1315 fax
www.gsky.com

DRAWING #

3-p

DATE: AUG 18, 2010

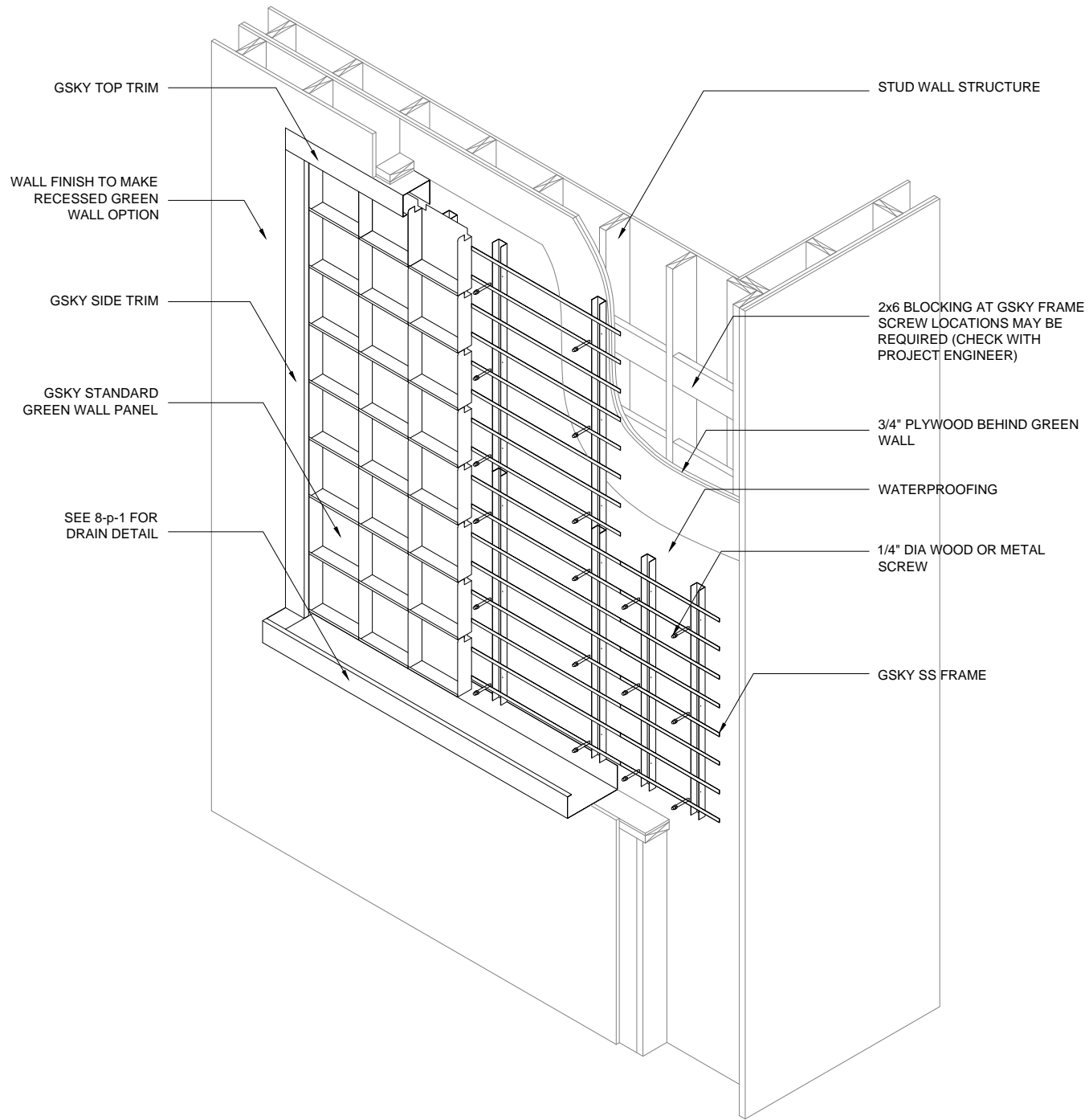
SCALE: AS NOTED

REV DATE: N/A

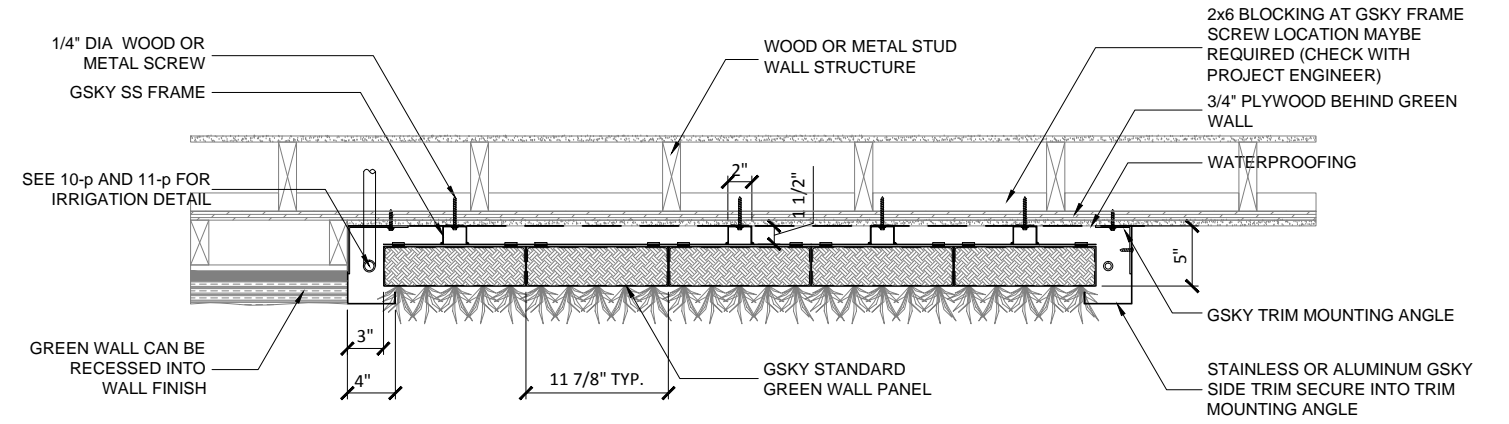
PAPER SIZE: 11 x 17

DESIGN NOTE:

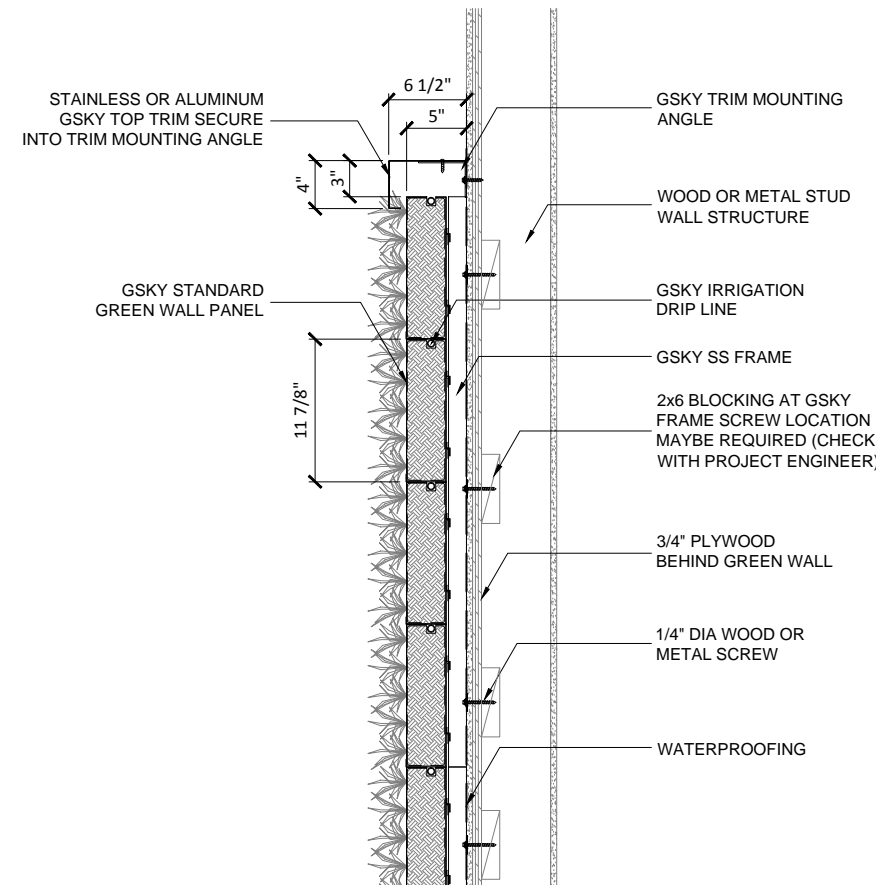
- *STRUCTURE MUST SUPPORT 30 LB/SQ.FT SATURATED GSKY GREEN WALL SYSTEM
- *WALL SURFACE MUST BE SMOOTH
- *3/4" PLYWOOD MUST BE INSTALLED BEHIND GREEN WALL AREA
- *BLOCKING AT GSKY FRAME SCREW LOCATIONS MAY BE REQUIRED CHECK WITH PROJECT ENGINEER
- *STUD LOCATION MUST BE IDENTIFIED ON THE AS-BUILT DRAWING
- *GREEN WALL CAN BE RECESSED AT INDOOR WALL (NOTE THAT GUTTER WILL EXTEND OUT; SEE 8-p-1 FOR DETAIL)
- *WATERPROOFING IS REQUIRED TO BE APPLIED (LIQUID OR SELF ADHESIVE TYPE IS RECOMMENDED)
- *ADEQUATE LIGHTING MUST BE DESIGNED AND INSTALLED (FOR INTERIOR GREEN WALL)
- *WALL MUST BE ACCESSIBLE FOR MAINTENANCE (LIFT ACCESS MAY BE REQUIRED)
- *TRIM WIDTH MAY INCREASE DEPENDING ON LOCATION OF ZONE VALVES; SEE 9-p, 10-p AND 11-p FOR DETAIL
- *GREEN WALL BELOW MUST TO BE CLEAR FOR MAINTENANCE LIFT ACCESS



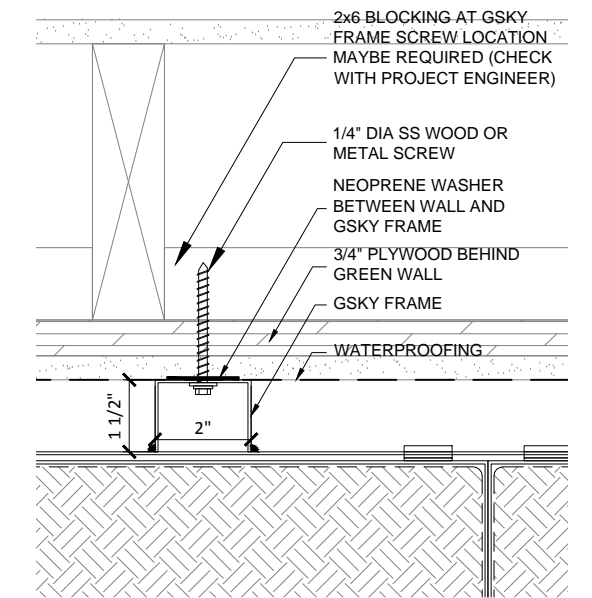
1 3D VIEW / STUD WALL
SCALE 3/8" - 1'-0" (FILE # 3-p-1)



2 PLAN DETAIL / STUD WALL
SCALE 3/4" - 1'-0" (FILE # 3-p-2)



3 SECTION DETAIL / STUD WALL
SCALE 3/4" - 1'-0" (FILE # 3-p-3)



4 FASTENER DETAIL / STUD WALL
SCALE 3" - 1'-0" (FILE # 3-p-4)

DRAWING TITLE:

GSKY GREEN WALL PANELS

STEEL WALL STRUCTURE / INTERIOR OR EXTERIOR

3D VIEW
PLAN DETAIL

SECTION DETAIL FASTENER DETAIL



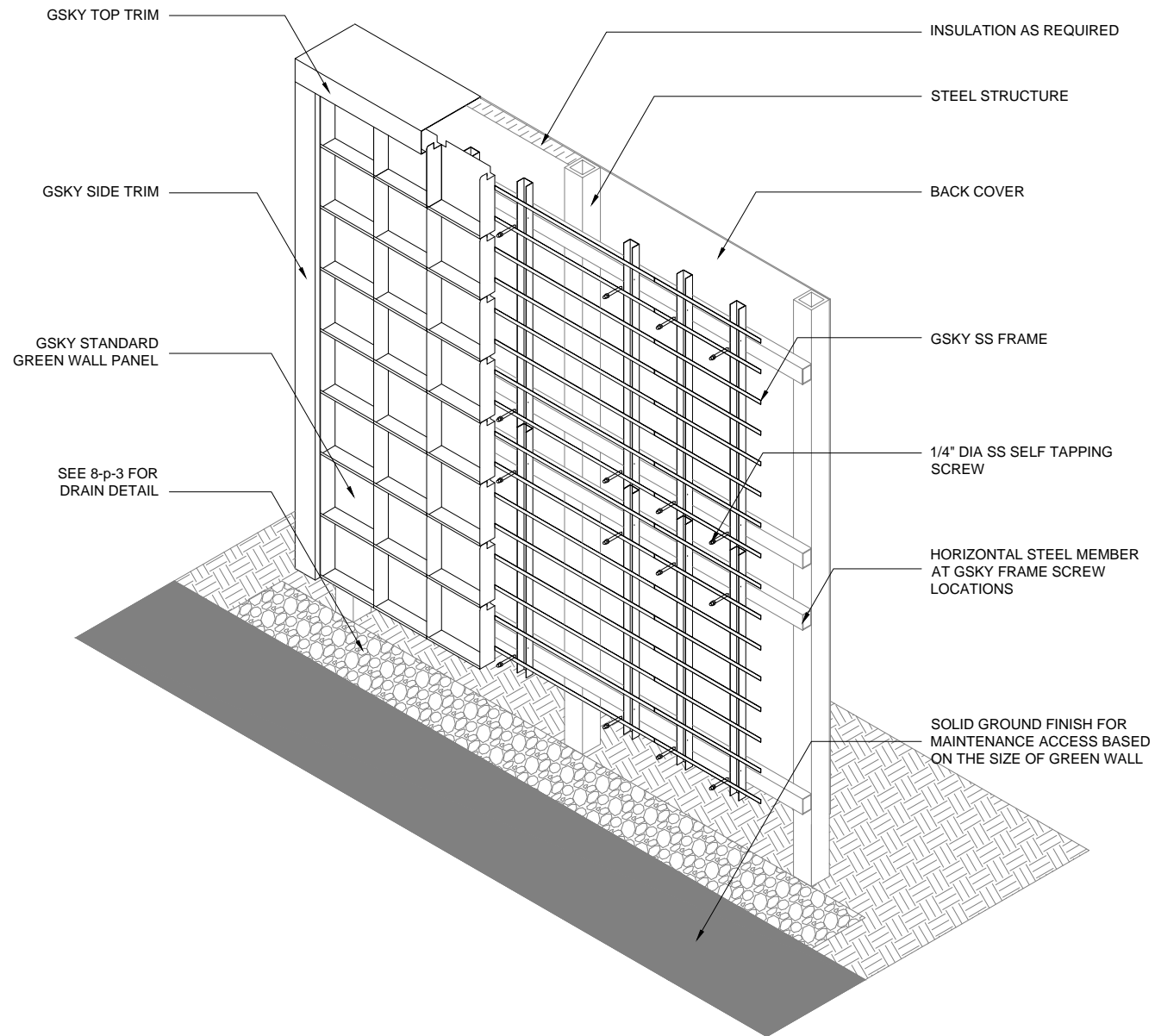
#704 - 318 HOMER ST
VANCOUVER, BC V6B 2V2
604-708-0611 ph 604-357-1315 fax
www.gsky.com

DESIGN NOTE:
*STRUCTURE MUST SUPPORT 30 LB/SQ.FT SATURATED GSKY GREEN WALL SYSTEM
*WALL SURFACE MUST BE SMOOTH
*HORIZONTAL STEEL MEMBER MUST LINE UP WITH GSKY FRAME SCREW LOCATIONS; ASK GSKY FOR CONSULTANT
*WATERPROOFING MAY BE REQUIRED (LIQUID OR SELF ADHESIVE TYPE IS RECOMMENDED)
*ADEQUATE LIGHTING MUST BE DESIGNED AND INSTALLED (FOR INTERIOR GREEN WALL)
*WALL MUST BE ACCESSIBLE FOR MAINTENANCE (LIFT ACCESS MAY BE REQUIRED)
*TRIM WIDTH MAY INCREASE DEPENDING ON LOCATION OF ZONE VALVES; SEE 9-p, 10-p AND 11-p FOR DETAIL
*GREEN WALL BELOW MUST TO BE CLEAR FOR MAINTENANCE LIFT ACCESS

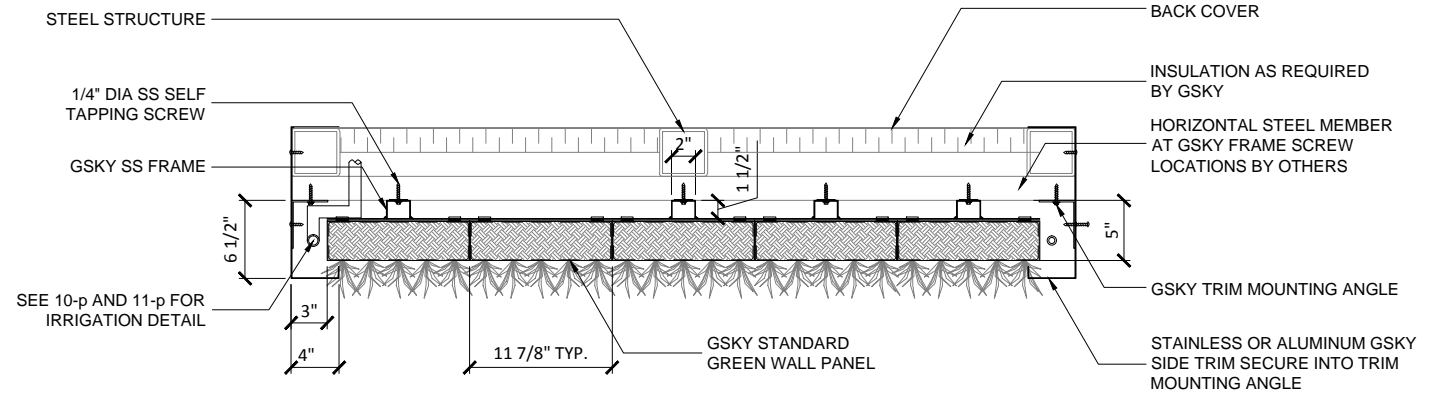
DRAWING #

4-p

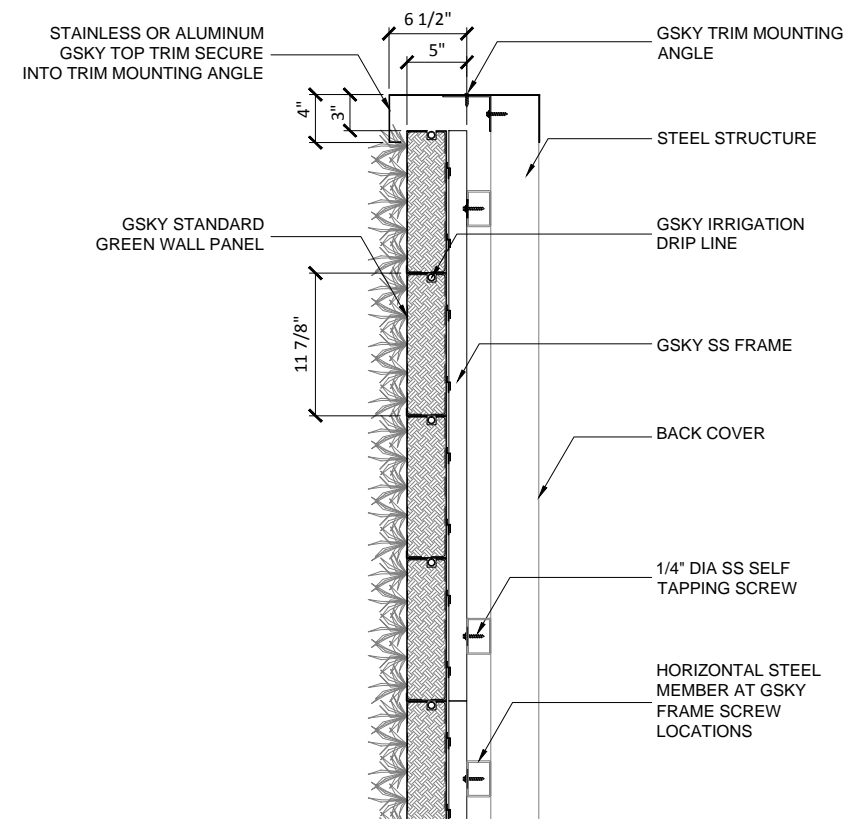
DATE: AUG 18, 2010 SCALE: AS NOTED
REV DATE: N/A PAPER SIZE: 11 x 17



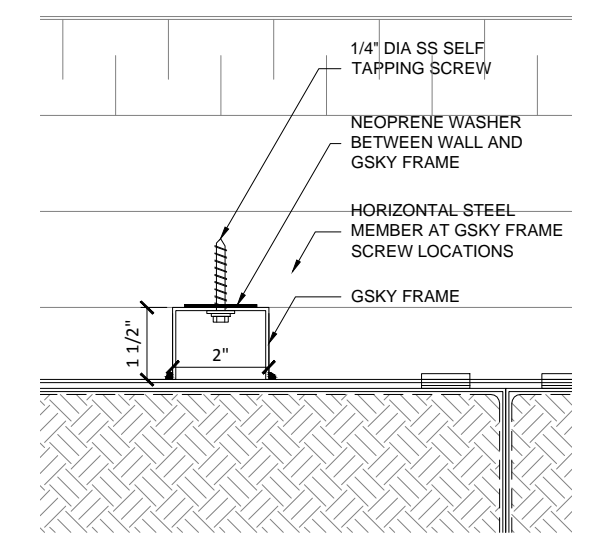
1 3D VIEW / STEEL WALL
SCALE 3/8" - 1'-0" (FILE # 4-p-1)



2 PLAN DETAIL / STEEL WALL
SCALE 3/4" - 1'-0" (FILE # 3-p-2)



3 SECTION DETAIL / STEEL WALL
SCALE 3/4" - 1'-0" (FILE # 3-p-3)



4 FASTENER DETAIL / STEEL WALL
SCALE 3" - 1'-0" (FILE # 4-p-4)

DRAWING TITLE:

GSKY GREEN WALL PANELS

DOUBLE SIDED WALL STRUCTURE / INTERIOR OR EXTERIOR

3D VIEW
PLAN DETAIL



#704 - 318 HOMER ST
VANCOUVER, BC V6B 2V2
604-708-0611 ph 604-357-1315 fax
www.gsky.com

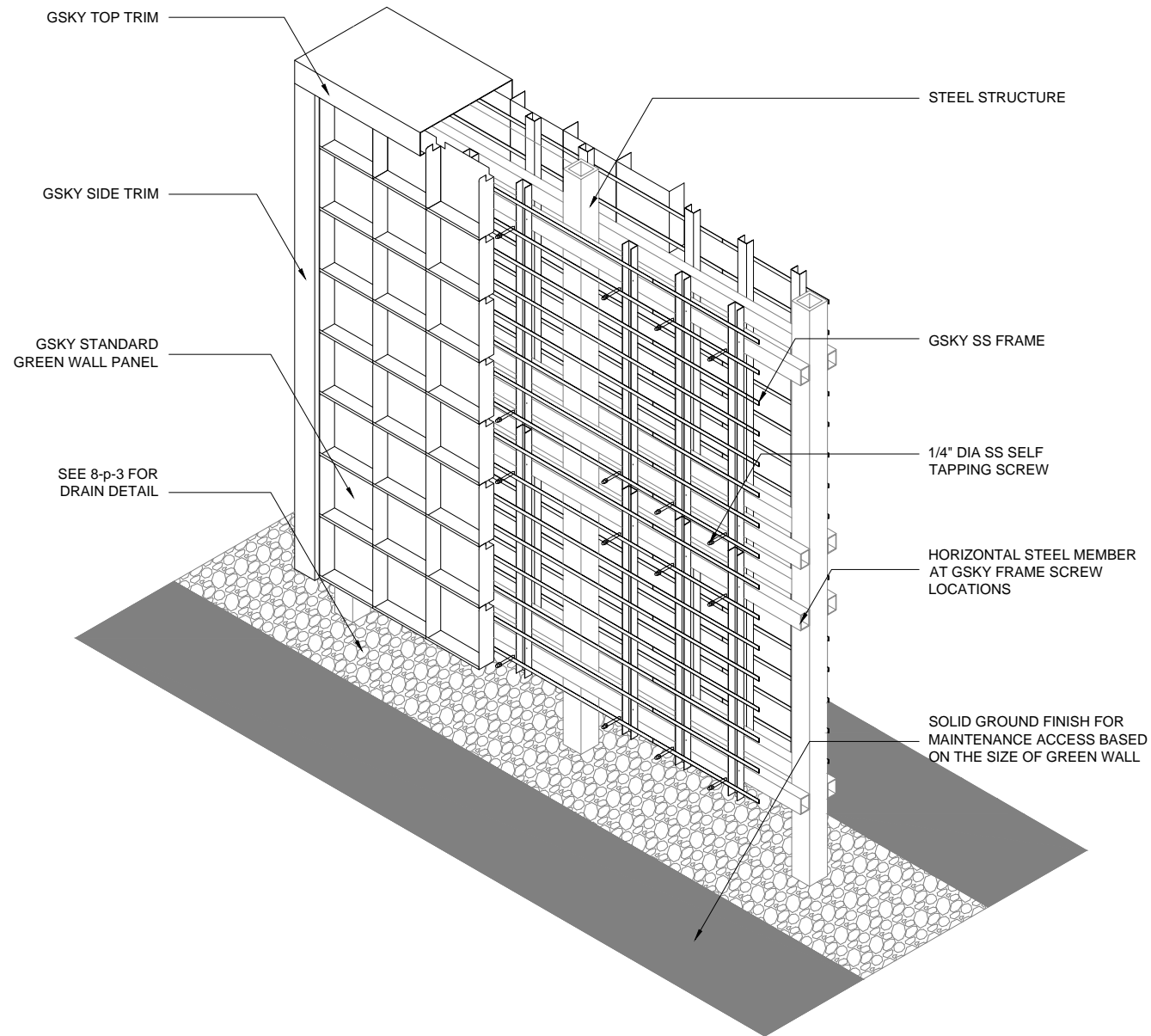
DESIGN NOTE:

- *STRUCTURE TYPE SHOWN ON 1-p, 2-p, 3-p AND 4-p CAN BE USED
- *STRUCTURE MUST SUPPORT 30 LB/SQ.FT SATURATED GSKY GREEN WALL SYSTEM
- *WALL SURFACE MUST BE SMOOTH
- *HORIZONTAL STEEL MEMBER MUST LINE UP WITH GSKY FRAME SCREW LOCATIONS; ASK GSKY FOR CONSULTANT
- *WATERPROOFING MAY BE REQUIRED (LIQUID OR SELF ADHESIVE TYPE IS RECOMMENDED)
- *ADEQUATE LIGHTING MUST BE DESIGNED AND INSTALLED (FOR INTERIOR GREEN WALL)
- *WALL MUST BE ACCESSIBLE FOR MAINTENANCE (LIFT ACCESS MAY BE REQUIRED)
- *TRIM WIDTH MAY INCREASE DEPENDING ON LOCATION OF ZONE VALVES; SEE 9-p, 10-p AND 11-p FOR DETAIL
- *GREEN WALL BELOW MUST TO BE CLEAR FOR MAINTENANCE LIFT ACCESS

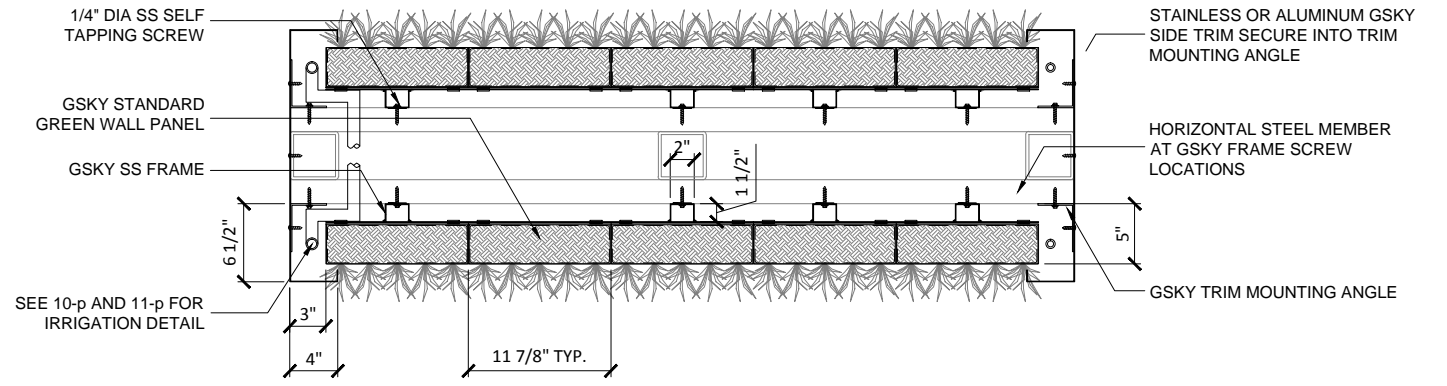
DRAWING #

5-p

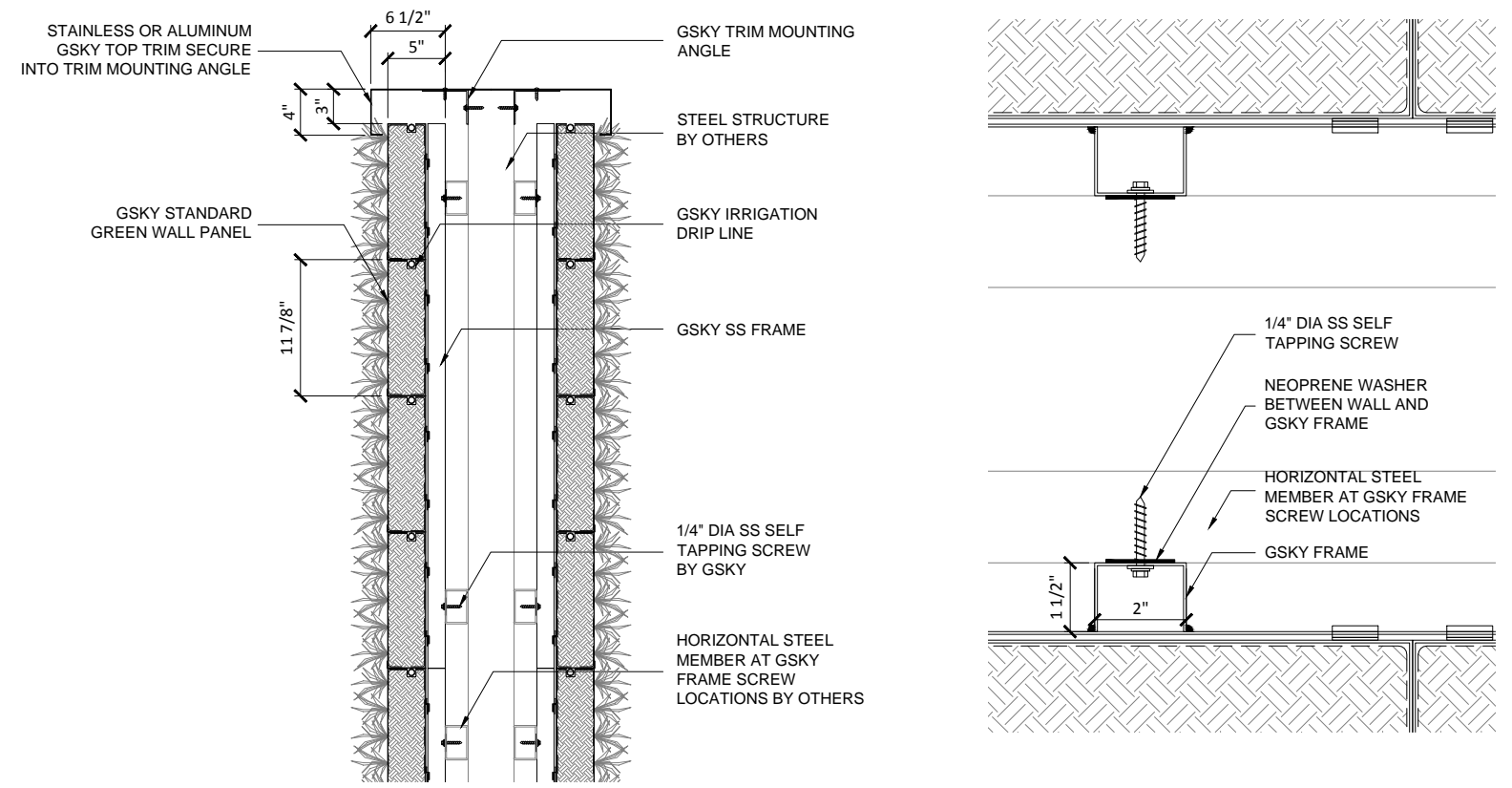
DATE: AUG 18, 2010 SCALE: AS NOTED
REV DATE: N/A PAPER SIZE: 11 x 17



1 3D VIEW / DOUBLE SIDED WALL
SCALE 3/8" - 1'-0" (FILE # 5-p-1)



2 PLAN DETAIL / DOUBLE SIDED WALL
SCALE 3/4" - 1'-0" (FILE # 5-p-2)



3 SECTION DETAIL / DOUBLE SIDED WALL
SCALE 3/4" - 1'-0" (FILE # 5-p-3)

4 FASTENER DETAIL / DOUBLE SIDED WALL
SCALE 3" - 1'-0" (FILE # 5-p-4)

DRAWING TITLE:

GSKY GREEN WALL PANELS

EIFS WALL STRUCTURE / INTERIOR OR EXTERIOR

3D VIEW
PLAN DETAIL

SECTION DETAIL
FASTENER DETAIL



#704 - 318 HOMER ST
VANCOUVER, BC V6B 2V2
604-708-0611 ph 604-357-1315 fax
www.gsky.com

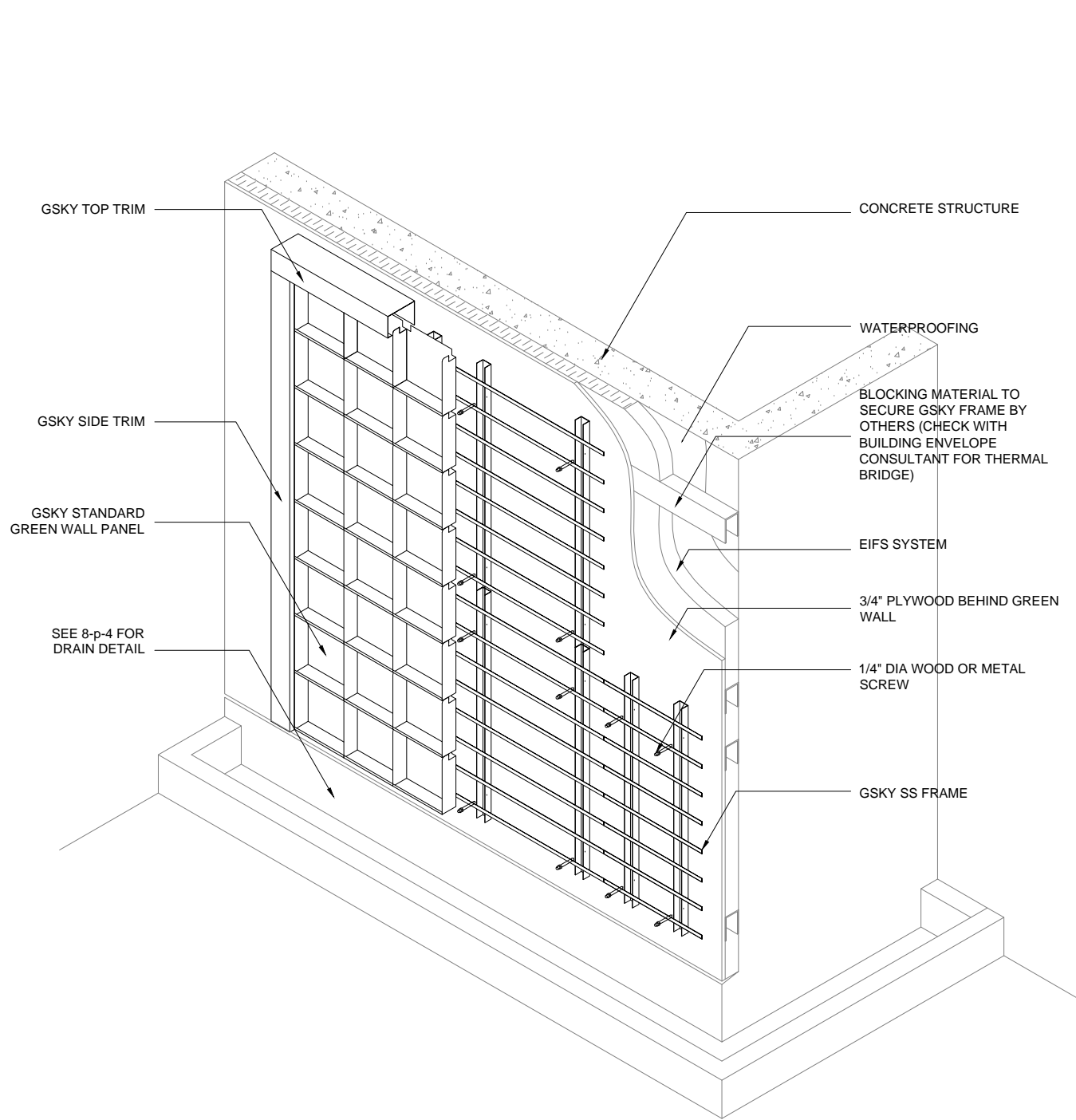
DESIGN NOTE:

- *STRUCTURE TYPE SHOWN ON 1-p, 2-p, 3-p AND 4-p CAN BE USED
- *STRUCTURE MUST SUPPORT 30 LB/SQ.FT SATURATED GSKY GREEN WALL SYSTEM
- *WALL SURFACE MUST BE SMOOTH
- *3/4" PLYWOOD MUST BE INSTALLED BEHIND GREEN WALL AREA
- *BLOCKING AT GSKY FRAME SCREW LOCATIONS MUST BE INSTALLED; CHECK WITH ENVELOPE CONSULTANT FOR THERMAL BRIDGE
- *WATERPROOFING IS REQUIRED (LIQUID OR SELF ADHESIVE TYPE IS RECOMMENDED)
- *ADEQUATE LIGHTING MUST BE DESIGNED AND INSTALLED (FOR INTERIOR GREEN WALL)
- *WALL MUST BE ACCESSIBLE FOR MAINTENANCE (LIFT ACCESS MAY BE REQUIRED)
- *TRIM WIDTH MAY INCREASE DEPENDING ON LOCATION OF ZONE VALVES; SEE 9-p, 10-p AND 11-p FOR DETAIL
- *GREEN WALL BELOW MUST TO BE CLEAR FOR MAINTENANCE LIFT ACCESS

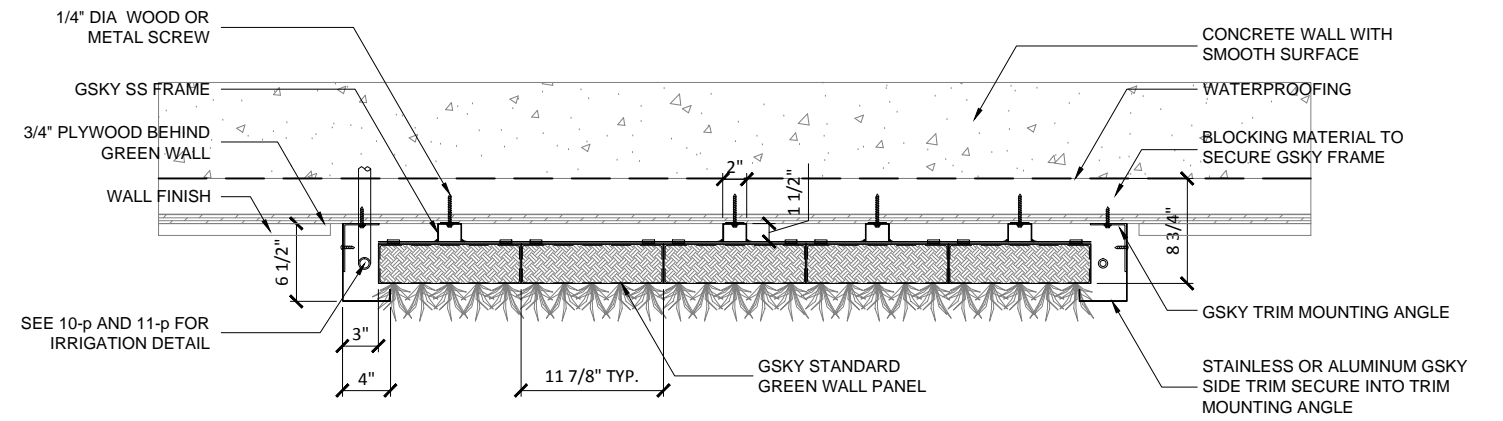
DRAWING #

6-p

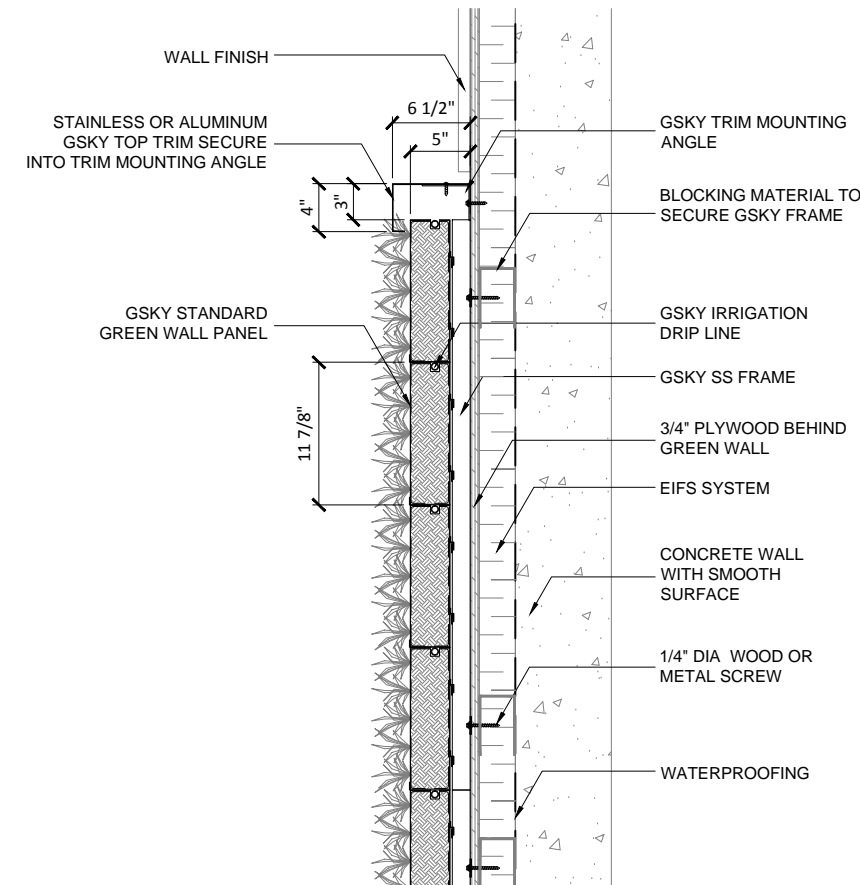
DATE: AUG 18, 2010 SCALE: AS NOTED
REV DATE: N/A PAPER SIZE: 11 x 17



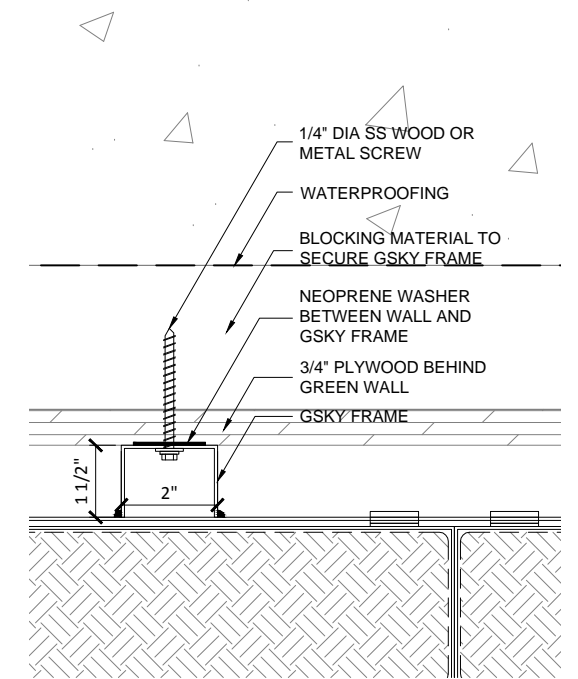
1 3D VIEW / EIFS WALL
SCALE 3/8" - 1'-0" (FILE # 6-p-1)



2 PLAN DETAIL / EIFS WALL
SCALE 3/4" - 1'-0" (FILE # 6-p-2)



3 SECTION DETAIL / EIFS WALL
SCALE 3/4" - 1'-0" (FILE # 6-p-3)



4 FASTENER DETAIL / EIFS WALL
SCALE 3" - 1'-0" (FILE # 6-p-4)

DRAWING TITLE:

GSKY GREEN WALL PANELS

TYPICAL DETAILS / INTERIOR OR EXTERIOR
3D VIEW
CORNER TRIM

CORNER PANEL
GUTTER OVER OPENING

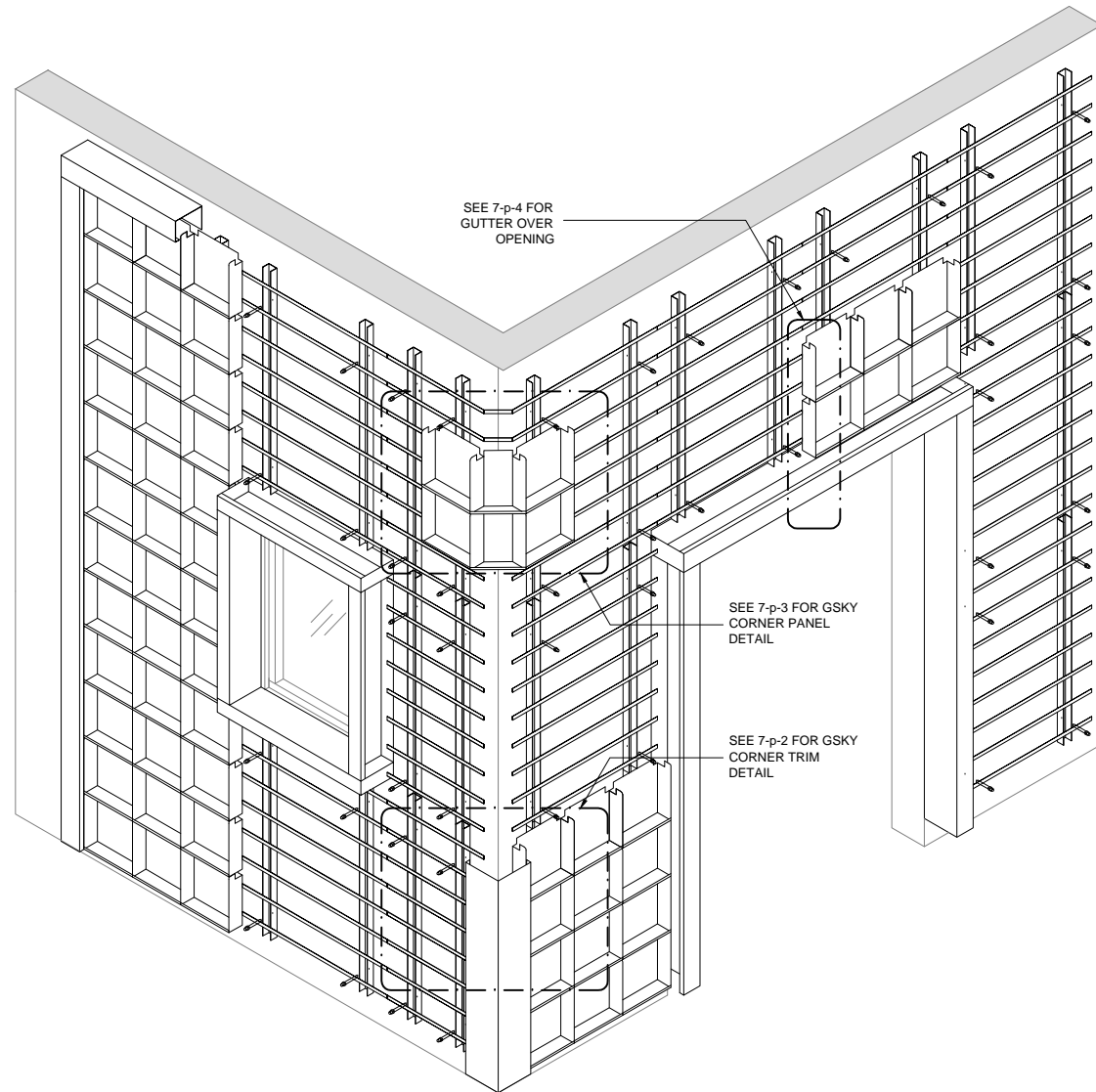


#704 - 318 HOMER ST
VANCOUVER, BC V6B 2V2
604-708-0611 ph 604-357-1315 fax
www.gsky.com

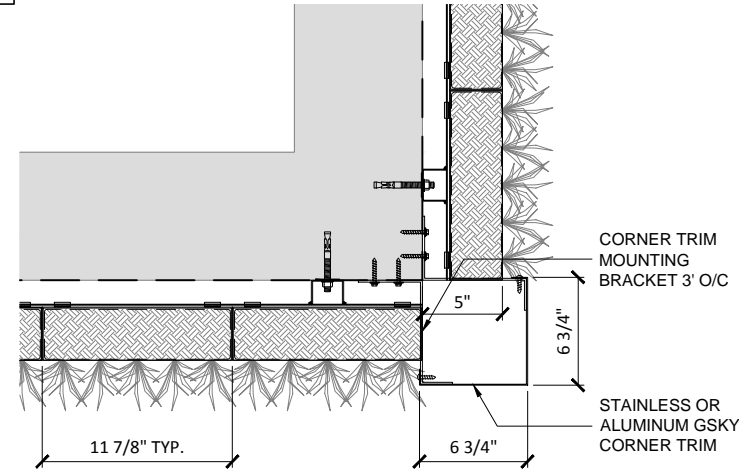
DRAWING #

7-p

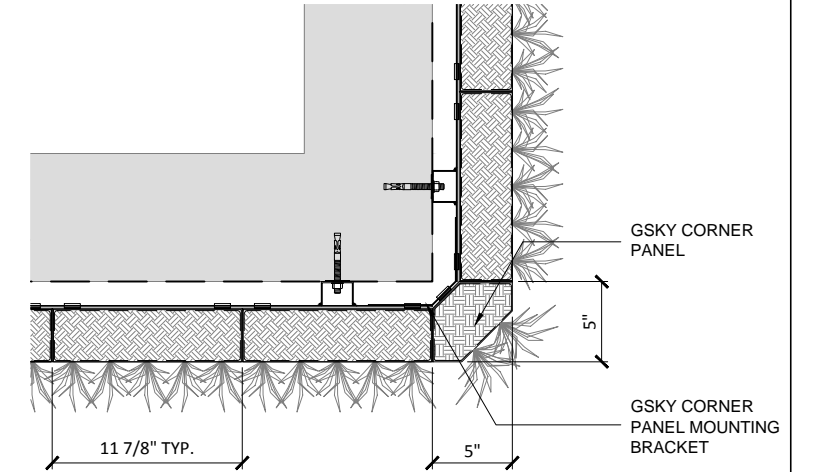
DATE: AUG 18, 2010 SCALE: AS NOTED
REV DATE: N/A PAPER SIZE: 11 x 17



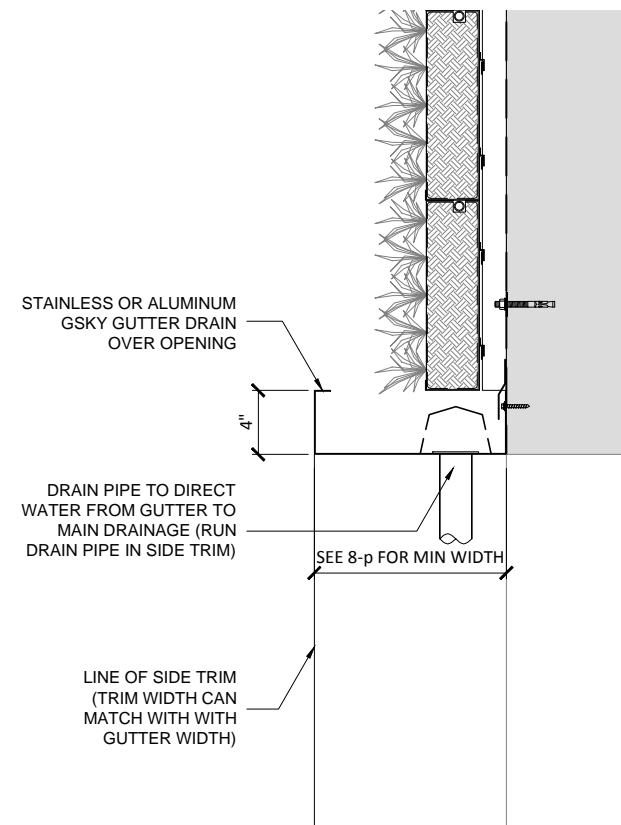
1 3D VIEW FOR TYPICAL DETAILS
SCALE NTS (FILE # 7-p-1)



2 PLAN DETAIL / CORNER TRIM
SCALE 1" - 1'-0" (FILE # 7-p-2)



3 PLAN DETAIL / CORNER PANEL
SCALE 1" - 1'-0" (FILE # 7-p-3)



4 SECTION DETAIL / GUTTER OVER OPENING
SCALE 1" - 1'-0" (FILE # 7-p-4)

DRAWING TITLE:

GSKY GREEN WALL PANELS

DRAIN DETAILS / INTERIOR OR EXTERIOR

GUTTER DRAIN TRENCH DRAIN
 GRAVEL DRAIN CURB DRAIN



#704 - 318 HOMER ST
 VANCOUVER, BC V6B 2V2
 604-708-0611 ph 604-357-1315 fax
 www.gsky.com

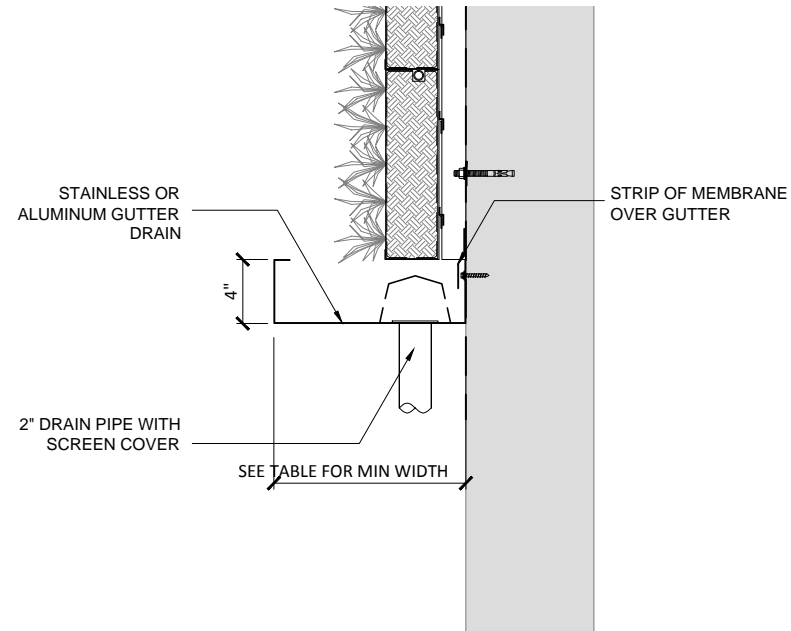
DRAWING #

8-p

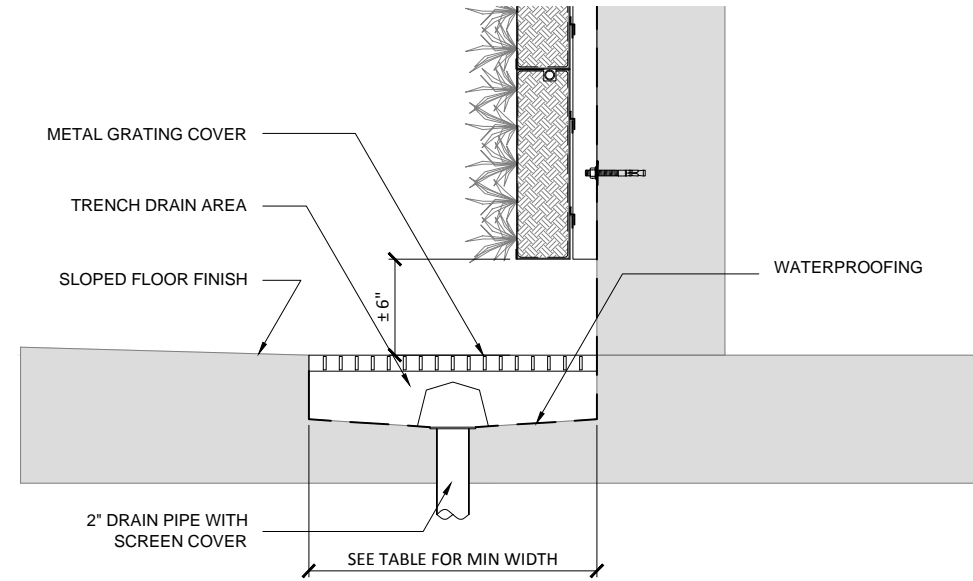
DATE: AUG 18, 2010 SCALE: AS NOTED
 REV DATE: N/A PAPER SIZE: 11 x 17

	HEIGHT: LESS THAN 16 PANELS	HEIGHT: BETWEEN 16 AND 24 PANELS	HEIGHT: MORE THAN 24 PANELS
GUTTER DRAIN	MIN 12"	NOT ADEQUATE	NOT ADEQUATE
TRENCH DRAIN	MIN 12"	MIN 24"	MIN 36" (ASK GSKY)
GROUND DRAIN	MIN 12"	MIN 24"	MIN 36" (ASK GSKY)
CURB DRAIN	MIN 12"	MIN 24"	MIN 36" (ASK GSKY)

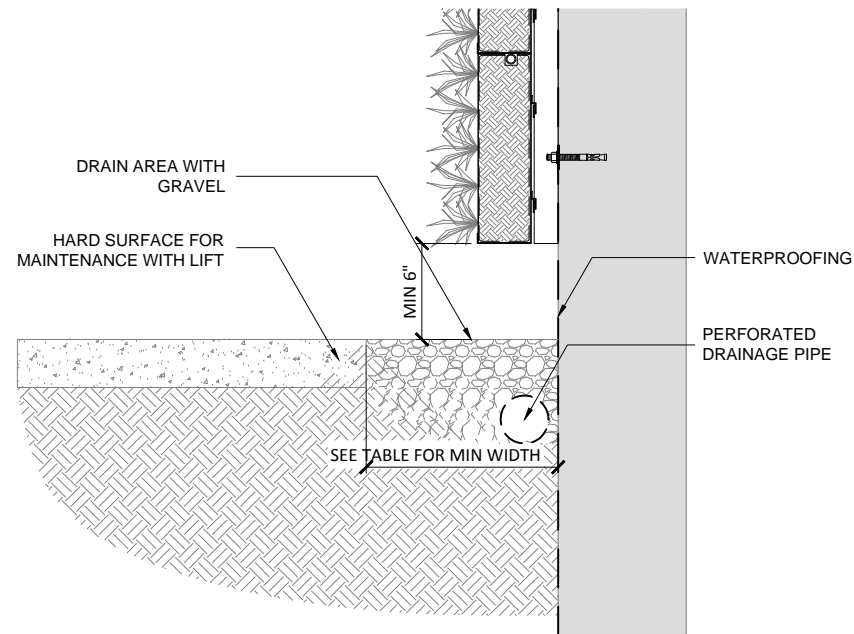
*DRAIN AREA SHOULD EXTEND MIN 1/2 DRAIN WIDTH FROM EACH SIDES OF GREEN WALL
 *MIN WIDTH MAY CHANGE DEPENDING ON PLANT SELECTION
 *WATERPROOFING IN TRENCH AND CURB DRAIN ARE REQUIRED
 *GREEN WALL BELOW MUST TO BE CLEAR FOR MAINTENANCE LIFT ACCESS



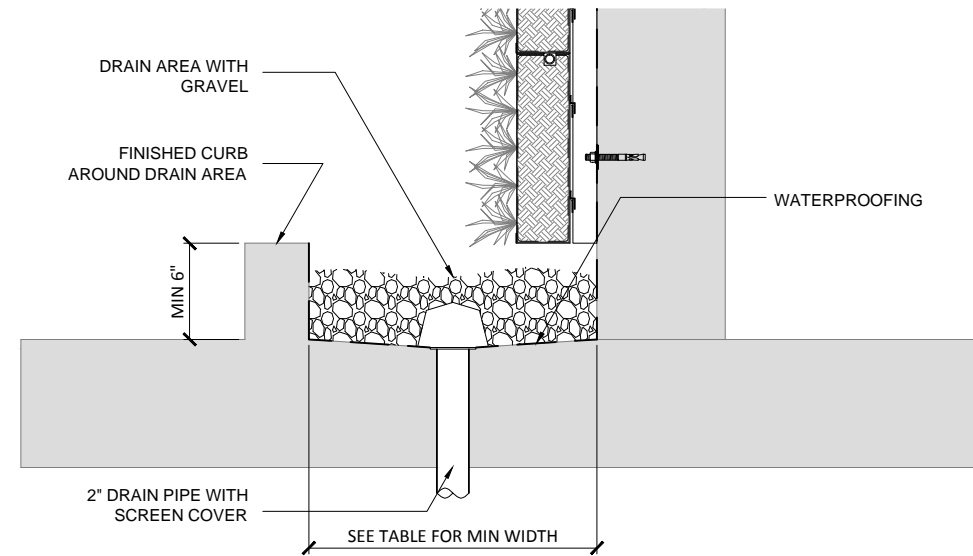
1 SECTION DETAIL / GUTTER DRAIN
 SCALE 1" - 1'-0" (FILE # 8-p-1)



2 SECTION DETAIL / TRENCH DRAIN
 SCALE 1" - 1'-0" (FILE # 8-p-2)



3 SECTION DETAIL / GRAVEL DRAIN
 SCALE 1" - 1'-0" (FILE # 8-p-3)



4 SECTION DETAIL / CURB DRAIN
 SCALE 1" - 1'-0" (FILE # 8-p-4)

DRAWING TITLE:

GSKY GREEN WALL PANELS IRRIGATION CONTROL UNIT (ICU) DESIGNS

ICU-1000
ICU-600

PLUMBING REQUIREMENTS
ELECTRICAL REQUIREMENTS



#704 - 318 HOMER ST
VANCOUVER, BC V6B 2V2
604-708-0611 ph 604-357-1315 fax
www.gsky.com

DRAWING #

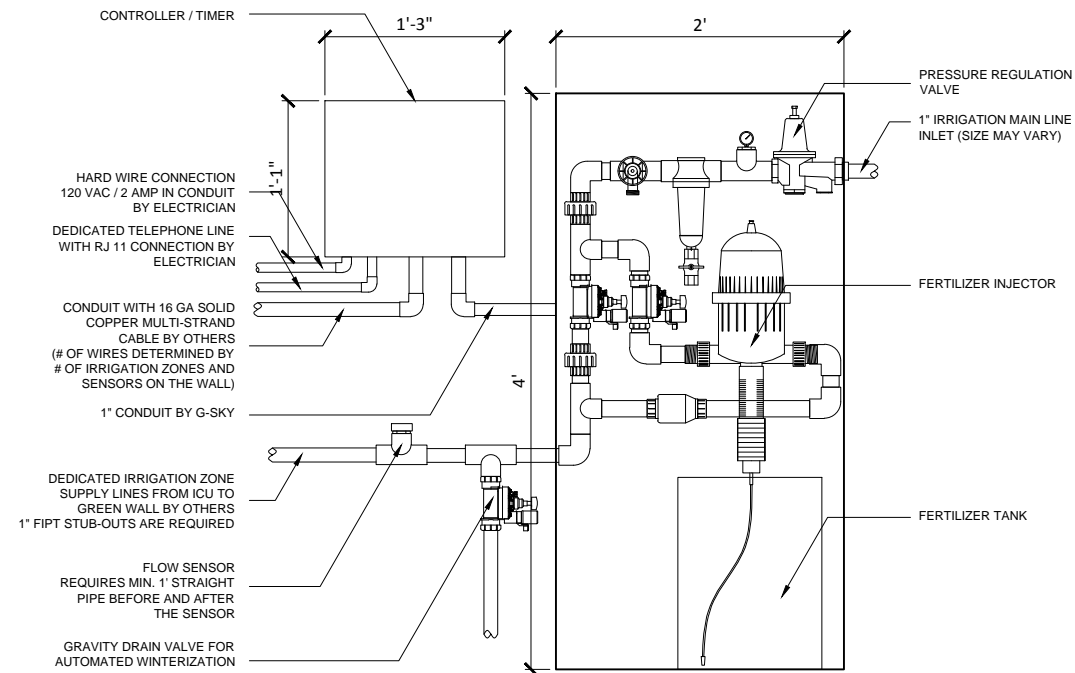
9-p

DATE: AUG 18, 2010 SCALE: AS NOTED
REV DATE: N/A PAPER SIZE: 11 x 17

ICU-1000

IRRIGATION CONTROL UNIT FOR:

- *GREEN WALLS LARGER THAN 1080SQFT (INTERIOR OR EXTERIOR)
- *EXTERIOR GREEN WALLS IN FREEZING CLIMATES USDA PLANT ZONE 8 OR BELOW (USDA PLANT ZONE 8 = MAX 20F OR -6.7C)



*REQUIREMENTS:

- *ICU - 48"h x 24"w x 36"d (INCLUDING DOOR SWING)
- *CONTROLLER - 13"h x 15"w x 20"d (INCLUDING DOOR SWING)
- *EASY ACCESS FOR MAINTENANCE
- *ADEQUATE PRESSURE TO GET MIN PSI AT BOTTOM OF GREEN WALL (TYP 65 PSI, UP TO 50 FT HEIGHT WALL)
- INSTALL BOOSTER PUMP IF REQUIRED (BY PLUMBER)
- *120V / 2 AMP POWER (HARD WIRE) (BY ELECTRICIAN)
- *DEDICATED TELEPHONE LINE RJ 11 (FOR OTHERS)
- *GROUNDING CONNECTION IF REQUIRED (BY ELECTRICIAN)
- *1 1/4" CONDUIT BETWEEN ACC AND EACH TRIM SPACES FOR ZONE VALVE CONTROL WIRES AND FREEZING SENSOR (BY ELECTRICIAN)
- *BACK-FLOW PREVENTOR AS REQUIRED (BY PLUMBER)
- *GREEN WALL MUST BE DESIGNED TO HAVE SPACE FOR ZONE VALVES TO RUN ALONG THE SIDE OF THE GREEN WALL WITHIN THE SIDE TRIM (MIN 7" WIDE TRIM) OR ABOVE THE WALL IN THE TOP TRIM (MIN 8" HIGH TRIM)
- *NON-FREEZING INDOOR SPACE WITH FLOOR DRAIN

1

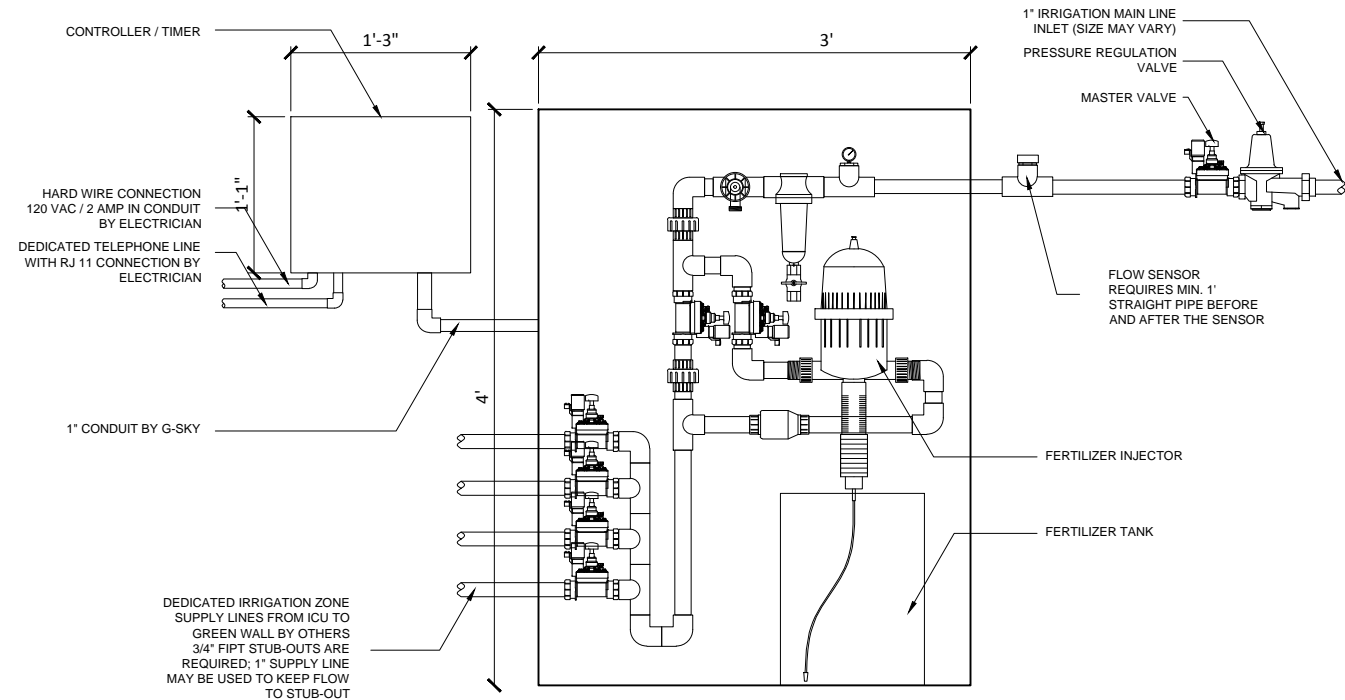
ICU-1000 / ZONE VALVES AT GREEN WAL

SCALE 3/4" - 1'-0" (FILE # 9-p-1)

ICU-600

IRRIGATION CONTROL UNIT FOR:

- *GREEN WALLS SMALLER THAN 1080 SQFT (INTERIOR OR EXTERIOR)
- *EXTERIOR WALLS IN USDA PLANT ZONE 9 OR HIGHER (NON-FREEZING CLIMATES)



*REQUIREMENTS:

- *ICU - 48"h x 36"w x 48"d (INCLUDING DOOR SWING)
- *CONTROLLER - 13"h x 15"w x 20"d (INCLUDING DOOR SWING)
- *EASY ACCESS FOR MAINTENANCE
- *ADEQUATE PRESSURE TO GET MIN PSI AT BOTTOM OF GREEN WALL (TYP 65 PSI, UP TO 50 FT HEIGHT WALL)
- INSTALL BOOSTER PUMP IF REQUIRED (BY PLUMBER)
- *120V / 2 AMP POWER (HARD WIRE) (BY ELECTRICIAN)
- *DEDICATED TELEPHONE LINE RJ 11 (BY OTHERS)
- *GROUNDING CONNECTION IF REQUIRED (BY ELECTRICIAN)
- *BACK-FLOW PREVENTOR AS REQUIRED (BY PLUMBER)
- *CAN BE EXPANDED MAX 6 ZONES TO ACCOMMODATE IF THERE IS NO SPACE FOR VALVES AT THE GREEN WALL(S)
- *NON-FREEZING INDOOR SPACE WITH FLOOR DRAIN
- *CAN BE LOCATED OUTDOORS WITH ADDITIONAL ENCLOSURE
- *CAN BE CUSTOM DESIGNED TO ACCOMMODATE FREEZING CLIMATES

2

ICU-600 / ZONE VALVES AT ICU

SCALE 3/4" - 1'-0" (FILE # 9-p-2)

DRAWING TITLE:

GSKY GREEN WALL PANELS

IRRIGATION LAYOUT 1

IRRIGATION LAYOUT FOR ICU-1000

IRRIGATION LAYOUT FOR ICU-600

STUB-OUT DETAIL

ZONE VALVE DETAIL



#704 - 318 HOMER ST
VANCOUVER, BC V6B 2V2
604-708-0611 ph 604-357-1315 fax
www.gsky.com

MAX. 36 PANELS IN EACH CONTINUOUS ROW
MAX. 5 PANELS HEIGHT IN ONE ZONE
MAIN IRRIGATION SUPPLY LINE CAN BE COPPER, PEX OR PVC TO MEET LOCAL CODE (BY PLUMBER)
STUB-OUT SHOULD BE INSTALLED WITH FEMALE PIPE THREAD FITTINGS

DRAWING #

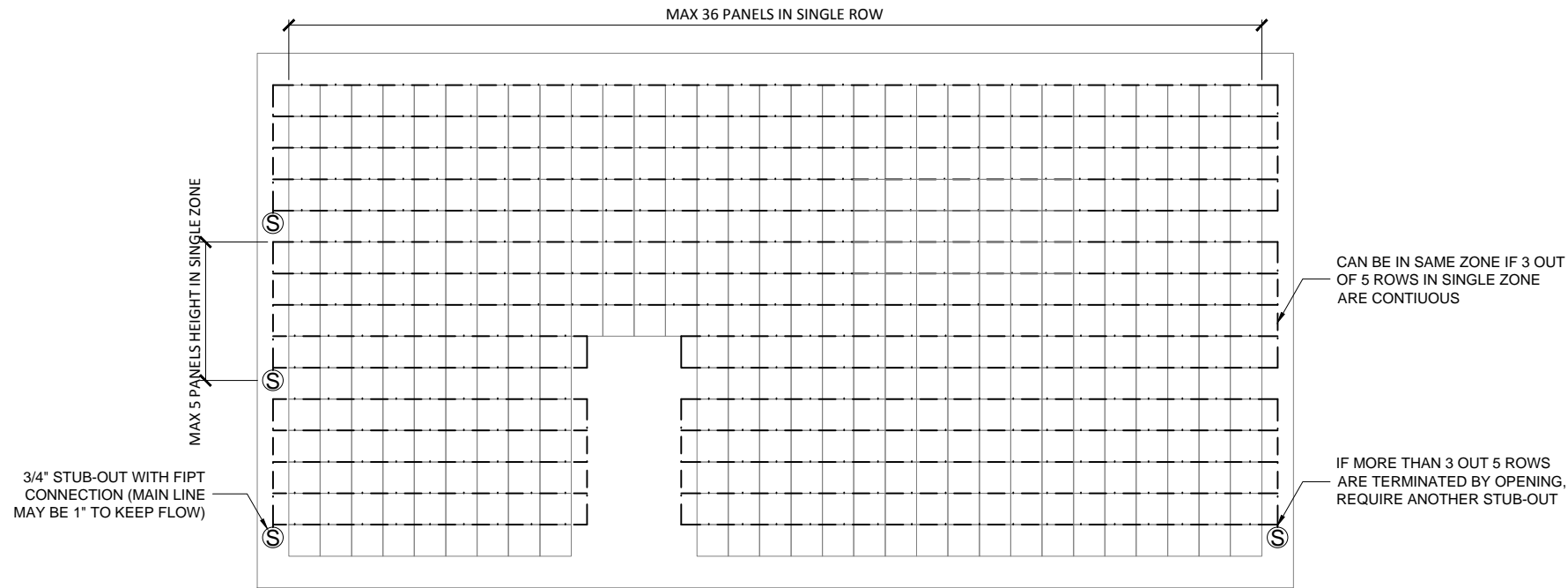
10-p

DATE: AUG 18, 2010

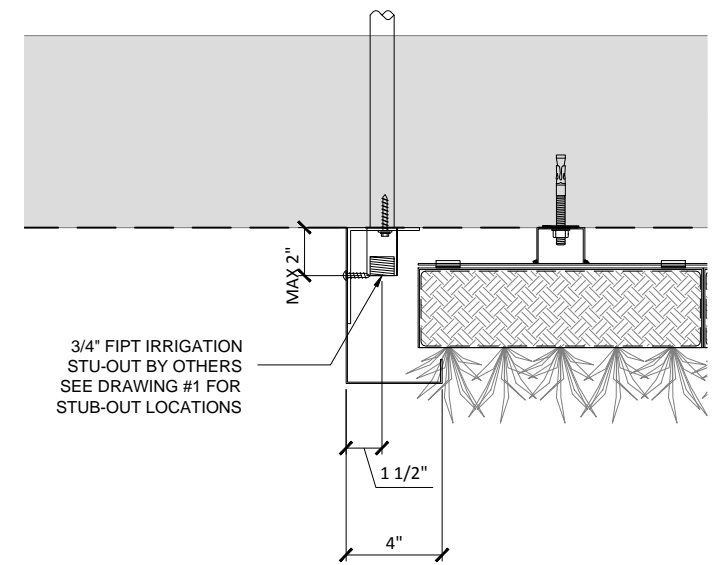
SCALE: AS NOTED

REV DATE: N/A

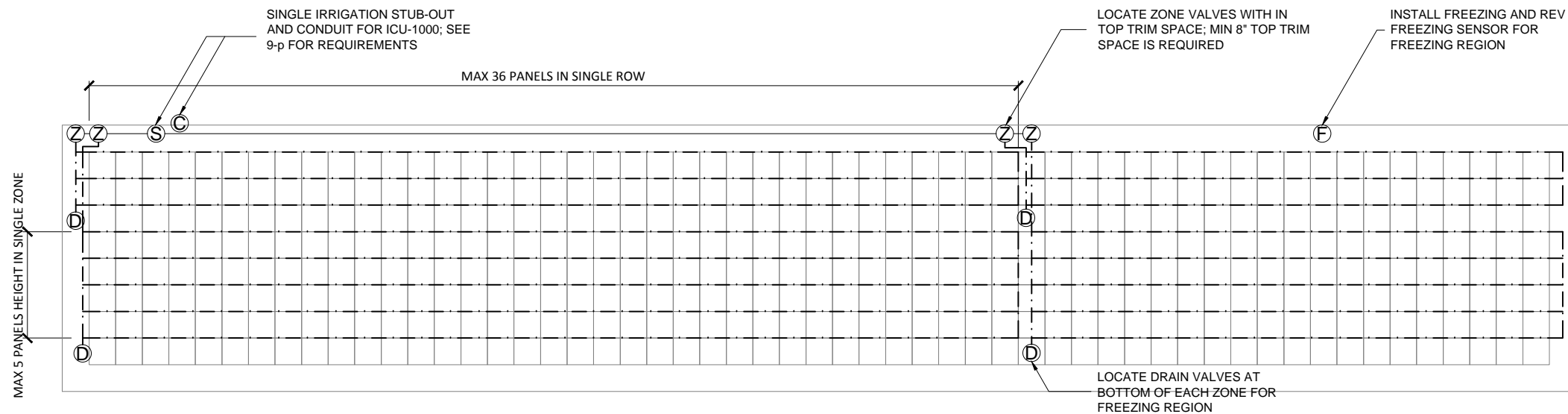
PAPER SIZE: 11 x 17



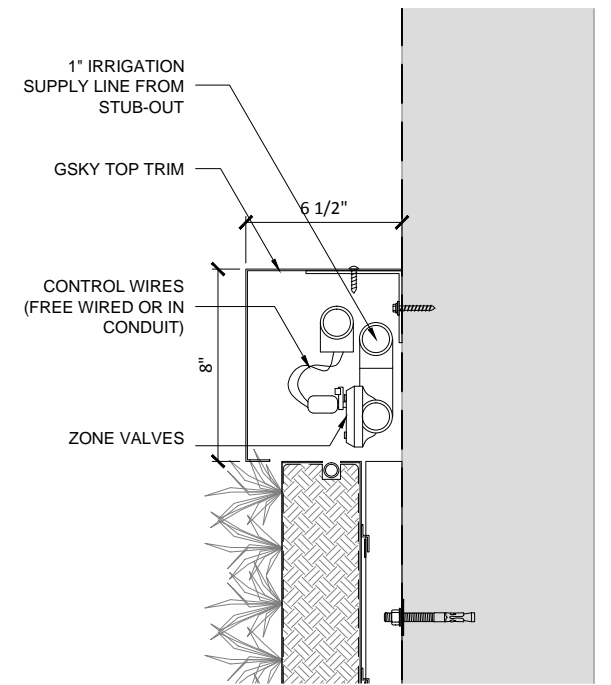
1 IRRIGATION LAYOUT FOR ICU-600 / ZONE VALVES AT ICU
SCALE NTS (FILE # 10-p-1)



2 IRRIGATION STUB-OUT DETAIL FOR ICU-600
SCALE 1-1/2" = 1'-0" (FILE # 10-p-2)



3 IRRIGATION LAYOUT FOR ICU-1000 / ZONE VALVES IN TOP TRIM
SCALE NTS (FILE # 10-p-3)



4 ZONE VALVE DETAIL FOR ICU-1000 IN TOP TRIM
SCALE 1-1/2" = 1'-0" (FILE # 10-p-4)

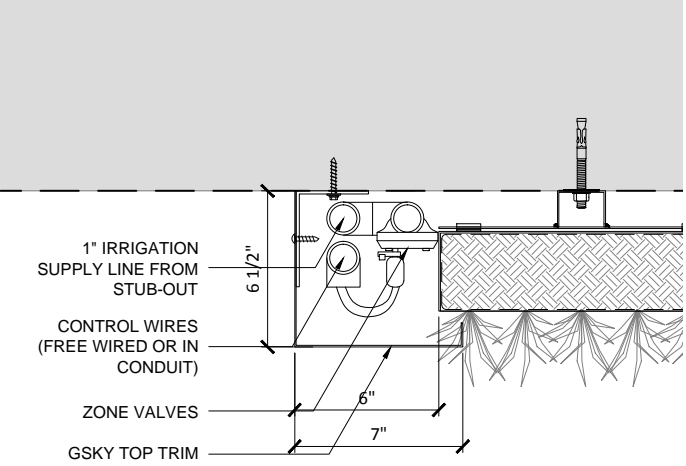
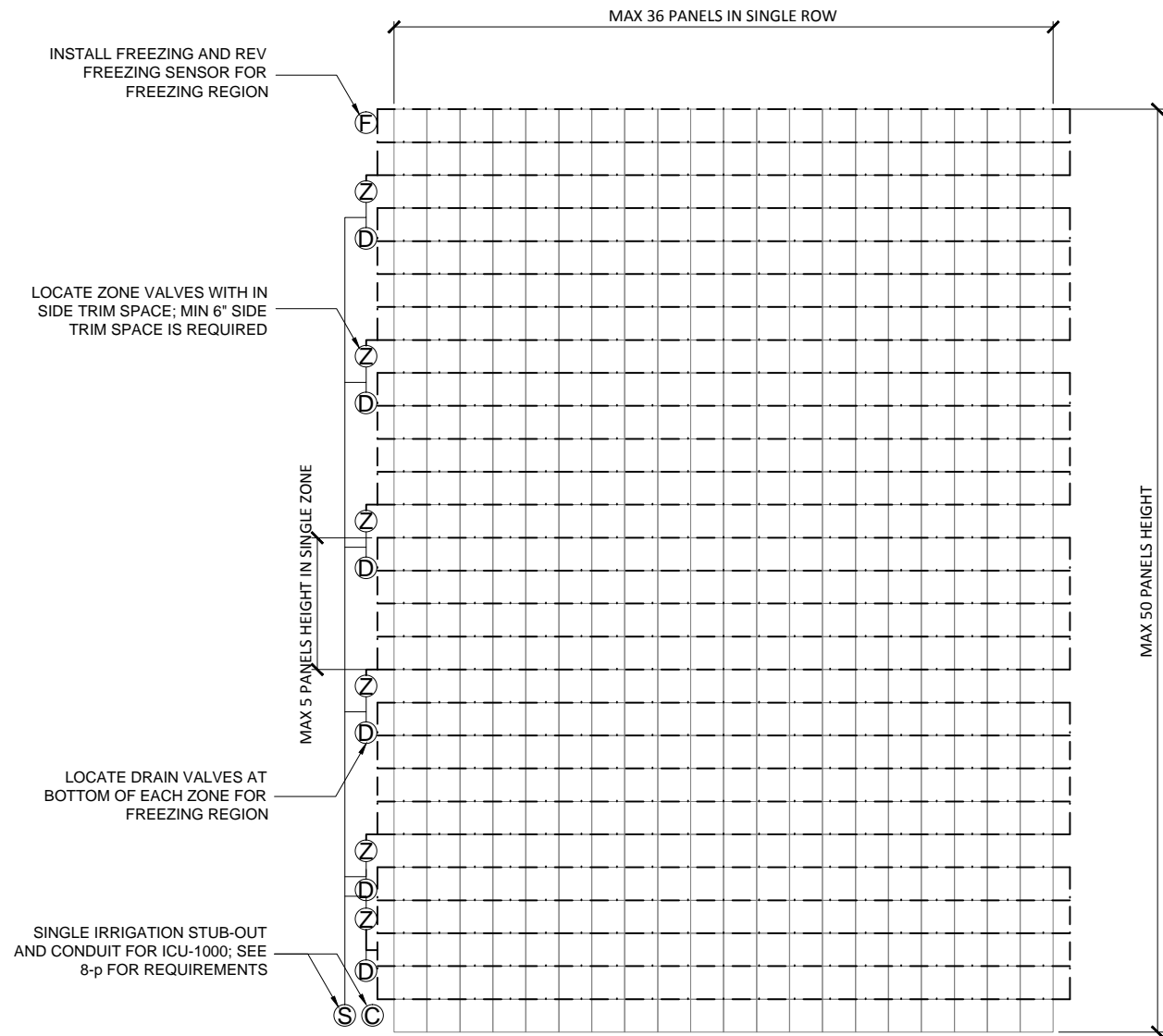
DRAWING TITLE:
GSKY GREEN WALL PANELS
IRRIGATION LAYOUT 2
 IRRIGATION LAYOUT FOR ICU-1000 -
 ZONE VALVE DETAIL -



#704 - 318 HOMER ST
 VANCOUVER, BC V6B 2V2
 604-708-0611 ph 604-357-1315 fax
 www.gsky.com

DRAWING # **11-p** DATE: AUG 18, 2010 SCALE: AS NOTED
 REV DATE: N/A PAPER SIZE: 11 x 17

MAX. 36 PANELS IN EACH CONTINUOUS ROW
 MAX. 5 PANELS HEIGHT IN ONE ZONE
 MAIN IRRIGATION SUPPLY LINE CAN BE COPPER, PEX OR PVC TO MEET
 LOCAL CODE (BY PLUMBER)
 STUB-OUT SHOULD BE INSTALLED WITH FEMALE PIPE THREAD FITTINGS



2 ZONE VALVE DETAIL FOR ICU-1000 IN TOP TRIM
 SCALE 1-1/2" = 1'-0" (FILE # 11-p-2)

1 IRRIGATION LAYOUT FOR ICU-1000 / ZONE VALVES IN SIDE TRIM
 SCALE NTS (FILE # 11-p-1)